

Sirui SVS75+SVH15

# SIRUI SVS Series Carbon Fiber Travel Tripod (SVS75+SVH15) Instruction Manual

Model: SVS75+SVH15 | Brand: SIRUI

## 1. INTRODUCTION

Thank you for choosing the SIRUI SVS Series Carbon Fiber Travel Tripod. This compact and versatile tripod is engineered for rapid height adjustment, modular design, and robust stability, making it ideal for various photography and videography needs. This manual provides essential information for setting up, operating, and maintaining your tripod to ensure optimal performance and longevity.



Image 1.1: The SIRUI SVS75+SVH15 Tripod in both folded and unfolded configurations, showcasing its compact travel size and extended setup.

## 2. WHAT'S IN THE BOX

Please verify that all components are present in your package:

- Tripod Legs (SVS75)
- Video Fluid Head (SVH15)
- Quick-Release Handle
- Carrying Bag
- Strap
- Mid-Level Spreader
- Magnetic Allen Key

# SVS75+SVH15



- |                |                    |                        |
|----------------|--------------------|------------------------|
| 1 Tripod       | 2 Video Fluid Head | 3 Quick-Release Handle |
| 4 Carrying Bag | 5 Strap            | 6 Mid-Level Spreader   |

Image 2.1: Visual representation of the SIRUI SVS75+SVH15 tripod kit components, including tripod legs, fluid head, quick-release handle, carrying bag, strap, and mid-level spreader.

## 3. SETUP

### 3.1. Unfolding the Tripod and Rapid Height Adjustment

1. Place the folded tripod on a flat surface.
2. Release the leg locks by twisting them counter-clockwise.
3. Extend the legs to your desired height. The rapid one-step twist-lock system allows for quick extension or retraction.
4. Twist the leg locks clockwise to secure the legs in place.



Image 3.1: Illustration of the fast twisting lock mechanism for rapid height adjustment of the tripod legs, enabling quick setup and breakdown.

### 3.2. Adjusting Leg Angles

The tripod features three adjustable leg angles (21°, 50°, 78°) for versatile positioning on various terrains. To adjust, press the angle adjustment knob located at the top of each leg and set it to the desired position.



Image 3.2: Diagram showing the tripod's leg angle adjustment system, illustrating the 21°, 50°, and 78° settings for different shooting scenarios.

### 3.3. Attaching the Fluid Head (SVH15)

1. Ensure the tripod legs are securely set.
2. Place the SVH15 fluid head onto the tripod's bowl base.
3. Tighten the locking knob beneath the bowl to secure the head.

### 3.4. Mounting Your Camera (Quick Release Plate)

1. Attach the quick-release plate to the bottom of your camera using the screw.
2. Slide the quick-release plate with your camera into the fluid head's receiver until it clicks securely into place.
3. Ensure the safety lock is engaged to prevent accidental release.



Image 3.3: Visual guide for quick installation and release of the camera using the quick-release plate system on the fluid head.

## 4. OPERATING FEATURES

## 4.1. Fluid Head Controls (Pan, Tilt, Counterbalance, Drag)

The SVH15 fluid head offers precise control for smooth camera movements:

- **Pan & Tilt Locking Knobs:** Use these to lock or unlock horizontal (pan) and vertical (tilt) movement.
- **Stepless Damping Adjustment:** Adjust the resistance for both pan and tilt movements to achieve desired smoothness.
- **7+0 Steps Counterbalance:** Provides adjustable counterbalance to support various camera weights, ensuring stable and balanced tilting.



Image 4.1: Detailed view of the fluid head's controls, including 7+0 steps counterbalance adjustment, stepless damping for tilt and pan, and panning & tilting locking knobs.

## 4.2. Quick Leveling with Bowl Base

The built-in bowl base allows for quick and precise leveling of the fluid head, offering  $\pm 15^\circ$  adjustment. Simply loosen the knob beneath the bowl, adjust the head until level (using the integrated bubble level), and then tighten the knob.

## 4.3. Monopod Conversion

The modular design allows one of the tripod legs to be detached and converted into a monopod. To do this, rotate the handle two turns, press the button, and pull out the handle to release the leg. This leg can then be used as a monopod or combined with an optional SVM-LF base.

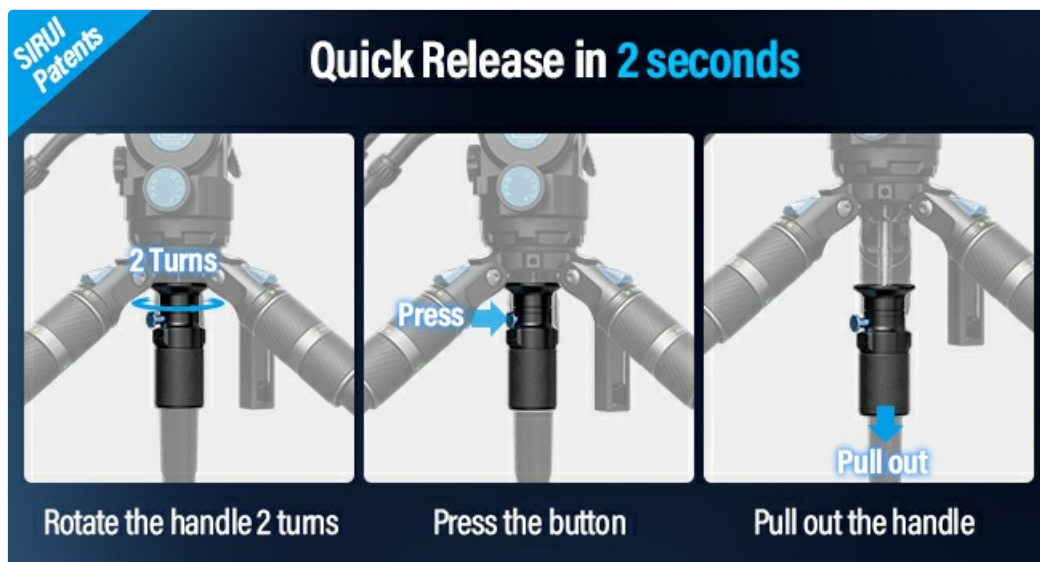


Image 4.2: Step-by-step illustration of how to quickly release a tripod leg for monopod conversion by rotating the handle, pressing a button, and pulling out the leg.

#### 4.4. Interchangeable Feet (Horseshoe/Spikes)

The tripod comes with 360° fully rotatable rubber horseshoe feet and interchangeable metal spikes. The horseshoe feet provide stability on flat surfaces, while the metal spikes offer enhanced grip on soft or uneven terrain. The magnetic Allen key is conveniently stored in the portable side handle for easy access.



Image 4.3: Overview of key tripod features including the portable side handle with magnetic Allen key, removable horseshoe feet and dual spikes, 1.6-inch diameter carbon fiber legs, and adjustable dual handles.

#### 4.5. Mid-Level Spreader

The included mid-level spreader enhances stability and flexibility, especially on uneven ground. It features one-click detachment and telescoping arms for easy adjustment.



Image 4.4: Diagram illustrating the mid-level spreader's one-click detachment and telescoping features, designed to add stability and flexibility to the tripod.

#### 4.6. Official Product Videos

Your browser does not support the video tag.

Video 4.1: This video demonstrates the wide load capacity and convertible center column features of a SIRUI tripod, highlighting its adaptability for various shooting requirements.

Your browser does not support the video tag.

Video 4.2: This video showcases the performance of the SVS60 Carbon Fiber Tripod, demonstrating its stability and ease of use within the SVS series.

## 5. MAINTENANCE

---

- Regularly clean the tripod legs and fluid head with a soft, dry cloth to remove dust and debris.
- Avoid using harsh chemicals or abrasive materials that could damage the carbon fiber or metal finishes.
- Ensure all locking mechanisms are free of obstructions and operate smoothly.
- Store the tripod in its carrying bag in a dry, cool place when not in use.

## 6. TROUBLESHOOTING

---

### 6.1. Tripod Legs Not Extending/Retracting Smoothly

- Check for any dirt or sand caught in the twist-lock mechanisms. Clean thoroughly.
- Ensure the twist-locks are fully loosened before attempting to extend or retract.

### 6.2. Fluid Head Movement is Stiff or Jerky

- Adjust the damping control knobs to a lighter setting.
- Ensure the pan and tilt locking knobs are fully disengaged.
- Verify that the camera is properly balanced on the fluid head using the counterbalance adjustment.

### 6.3. Tripod Stability Issues

- Ensure all leg sections and angle locks are securely tightened.
- For uneven terrain, utilize the mid-level spreader and adjust leg angles appropriately.
- Consider using the metal spikes for better grip on soft ground.

## 7. SPECIFICATIONS

---

Feature	Detail
Model Name	SVS75+SVH15
Material	Carbon Fiber
Item Weight	9.02 pounds (4.1 Kilograms)
Maximum Height	155 Centimeters (61.2 inches)
Minimum Height	21 Centimeters (8.1 inches)
Folded Size	49 centimeters (h) (21 inches)
Tripod Head Type	Fluid Heads, Video Heads
Special Feature	Adjustable, Rotatable, Telescopic
Compatible Devices	Binoculars (and various cameras)
Leg Adjustment Angle (without mid-level spreader)	21°, 50°, 78°
Leg Adjustment Angle (with mid-level spreader)	21° - 36°

# Specifications

Model	SVS75+SVH15	
Weight	17.2lbs/7.8kg	Tripod: 9lbs/4.1kg Ballhead: 8.2lbs/3.7kg
Load Capacity	33lbs/15kg	Tripod: 55.1lbs/25kg Ballhead: 33lbs/15kg
Folded Length	40.3"/102.5cm	
Adjustable Height	19.3"/49cm -- 72.2"/183.5cm	
Material	Carbon Fiber	
Leg Adjustment Angle (without mid-level spreader)	21°, 50°, 78°	
Leg Adjustment Angle (with mid-level spreader)	21°--36°	



Image 7.1: Detailed specifications for the SIRUI SVS75+SVH15 tripod, including weight, load capacity, folded length, adjustable height, material, and leg adjustment angles.

## 8. WARRANTY & SUPPORT

SIRUI products are manufactured to high-quality standards. For warranty information, technical support, or service inquiries, please refer to the official SIRUI website or contact your local distributor. Keep your purchase receipt as proof of purchase for warranty claims.