

Yaheeda YA14485

Yaheeda Stainless Steel Sand Scoop Kit (Model YA14485) Instruction Manual

Brand: Yaheeda | Model: YA14485

1. SAFETY INFORMATION

Before using the Yaheeda Stainless Steel Sand Scoop Kit, please read and understand the following safety guidelines:

- Always wear appropriate eye protection to prevent sand, debris, or other materials from entering your eyes.
- Be cautious of sharp edges on the scoop and shovel during assembly and use. Handle with care.
- Avoid contact with underground utilities, cables, or pipes when digging. Always check your digging area.
- Maintain proper posture while digging to prevent strain or injury. Use the long handle option to reduce bending.

2. PRODUCT OVERVIEW

The Yaheeda Stainless Steel Sand Scoop Kit is designed for efficient metal detecting and treasure hunting in various environments, including beaches, underwater, lawns, and soil. Constructed from heavy-duty 1.2 mm thick stainless steel, it offers durability, rust-proof, anti-corrosion, and wear-resistant properties.

Key features include:

- **2-in-1 Flexible Design:** The scoop can be used as a compact handheld tool or with an extendable long handle for reduced bending.
- **Efficient Sand Sifting:** High-density hexagonal 7 mm holes allow for quick sifting of sand and soil, retaining treasures.
- **Ergonomic Grip:** Features a rubberized non-slip grip for comfortable and secure handling.
- **Durable Construction:** Made from premium stainless steel for long-term use and resistance to harsh

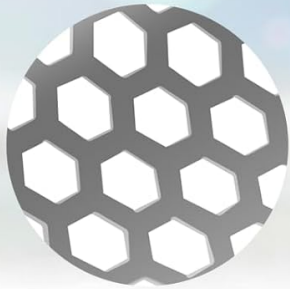
conditions.



Figure 2.1: The Yaheeda Sand Scoop Kit demonstrating its 2-in-1 flexibility for various uses.

Large Hexagonal Mesh Holes

The high-density big mesh can quickly screen out sand and soil, leaving treasures.



Hole: **0.27"/7mm**



Figure 2.2: Detailed view of the large hexagonal mesh holes designed for efficient sand and soil sifting.

3. SETUP INSTRUCTIONS

The Yaheeda Sand Scoop Kit offers flexible assembly for both handheld and long-handle configurations. Follow these steps to assemble your scoop:

1. Attach the Handheld Grip:

- Push the handle base into the designated slot on the scoop.
- Tighten the limit screw to secure the handle base.
- Install the two fixing screws to firmly attach the handheld grip to the scoop.

2. Assemble the Long Handle (Optional):

- If using the long handle, remove the handheld grip by unscrewing the fixing screws and limit screw.
- Assemble 2 or 3 extension rods together by screwing them into each other, based on your preferred height.
- Insert the assembled long handle into the scoop's handle base and secure it with the provided bolts.

NOTE: Ensure that the handle is securely fastened before each use to prevent detachment during operation.

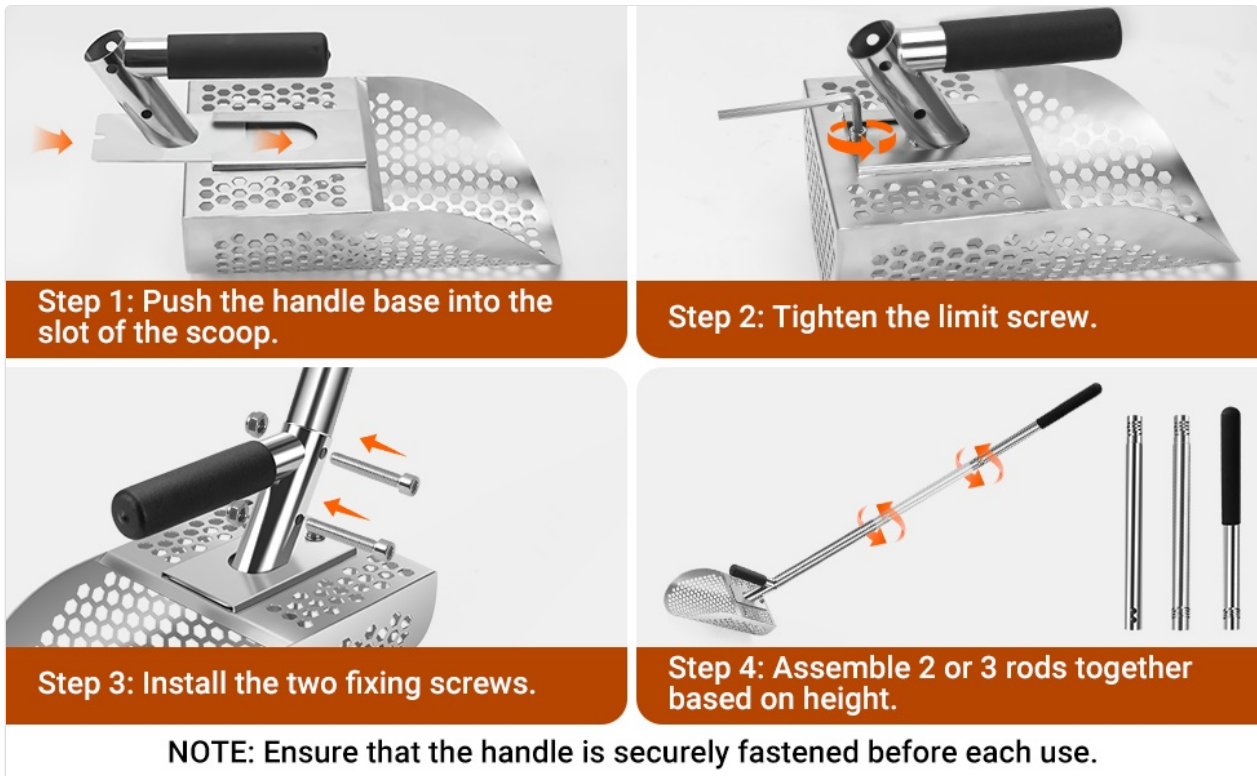


Figure 3.1: Visual guide for assembling the sand scoop in both handheld and long-handle configurations.

Your browser does not support the video tag.

Video 3.1: A seller-provided video demonstrating the assembly process of the Yaheeda Long Handle Sand Scoop with Shovel.

4. OPERATING INSTRUCTIONS

Using the Yaheeda Sand Scoop is straightforward for effective treasure hunting:

1. **Locate Target:** Use a metal detector to pinpoint potential targets in sand or soil.
2. **Scoop Material:** Once a target is located, use the scoop to dig and collect the surrounding material. For deeper targets or to reduce bending, utilize the long handle configuration.
3. **Sift Material:** Gently shake the scoop from side to side. The hexagonal mesh holes will allow sand and smaller debris to fall through, leaving larger items and potential treasures inside the scoop.
4. **Retrieve Finds:** Carefully inspect the remaining contents in the scoop to retrieve any discovered items.

Figure 4.1: The sand scoop in action, assisting in treasure hunting with a metal detector.

Your browser does not support the video tag.

Video 4.1: A seller-provided video demonstrating the use of the Yaheeda Long Handle Sand Scoop for metal detecting and sifting.

5. MAINTENANCE

Proper maintenance ensures the longevity and performance of your Yaheeda Stainless Steel Sand Scoop Kit:

- **Cleaning:** After each use, especially in saltwater environments, rinse the scoop and shovel thoroughly

with fresh water to remove sand, salt, and debris. This helps prevent corrosion and maintains the stainless steel's integrity.

- **Drying:** Allow all components to air dry completely before storage to prevent moisture buildup.
- **Inspection:** Regularly inspect all screws and connections for tightness. Tighten any loose fasteners to ensure the scoop remains stable and safe to use.
- **Storage:** Store the kit in a dry place away from extreme temperatures. The detachable design allows for compact storage.

6. TROUBLESHOOTING

If you encounter any issues with your Yaheeda Stainless Steel Sand Scoop Kit, consider the following:

- **Loose Handle/Scoop:** If the handle or scoop feels wobbly, check all connection points. Ensure the limit screw and fixing bolts are fully tightened. Refer to Section 3: Setup Instructions for proper assembly.
- **Difficulty Sifting:** Ensure the mesh holes are not clogged with mud or debris. Clean the scoop thoroughly as described in Section 5: Maintenance.
- **Corrosion/Rust:** While made of stainless steel, prolonged exposure to saltwater without proper rinsing can lead to surface rust. Clean immediately after saltwater use and dry thoroughly. Minor surface rust can often be removed with a stainless steel cleaner.
- **Structural Integrity:** In rare cases, manufacturing defects such as weak welds may occur. If you notice any cracks or breaks in the metal, discontinue use immediately and contact customer support for assistance.

7. SPECIFICATIONS

Feature	Detail
Material	Stainless Steel
Color	Silver
Item Dimensions (L x W x H)	6.1 x 9.2 x 46 inches
Item Weight	3.27 pounds (1.49 Kilograms)
Style	Compact
Handle Material	Stainless Steel
Blade Material	Stainless Steel
Is Foldable	No (disassembles for compact storage)
Grip Type	Ergonomic
Item Model Number	YA14485

8. WARRANTY AND SUPPORT

Yaheeda products are designed for durability and performance. This product comes with a **Worry-Free Warranty!**

For warranty claims, technical support, or any questions regarding your Yaheeda Stainless Steel Sand Scoop

Kit, please contact our customer service team through the retailer's platform where you purchased the product. Please provide your model number (YA14485) and proof of purchase for faster service.