

Aqonsie SL-288

Aqonsie SL-288 Solar Shed Lights Indoor/Outdoor Instruction Manual

1. INTRODUCTION

This manual provides detailed instructions for the installation, operation, and maintenance of your Aqonsie SL-288 Solar Shed Lights. Please read this manual thoroughly before use to ensure proper function and longevity of the product. This solar lighting system is designed for both indoor and outdoor applications, offering versatile illumination with motion sensing capabilities and remote control.

2. PRODUCT OVERVIEW

2.1 Components Included

- Solar Pendant Light Unit (Quantity: 2 for 2-pack)
- Solar Panel (Quantity: 2 for 2-pack)
- Remote Control (Quantity: 2 for 2-pack)
- Mounting Screws and Anchors
- 16.5 ft Waterproof Connection Cable (Quantity: 2 for 2-pack)

2.2 Key Features

- **High Brightness:** Equipped with 288 white LEDs, providing up to 1200 lumens of illumination.
- **Wide Coverage:** 8-sided LED panel design ensures broader light dispersion.
- **Versatile Lighting Modes:** Features 5 distinct lighting modes, including motion sensor activation for both night and daytime use.
- **Remote Control:** Allows for convenient adjustment of power, modes, brightness, and motion sensing delay.
- **Split Design:** Separate solar panel and light unit connected by a 16.5 ft waterproof cable, enabling flexible indoor and outdoor installation.
- **Durable Construction:** IP65 waterproof rating and ABS material ensure resistance to rain and various

weather conditions.

- **Daytime Functionality:** Specific modes (Mode 4 and AUTO Mode 5) allow for light operation during daylight hours.

3. SETUP AND INSTALLATION

Before installation, ensure the light unit's ON button is pressed. The remote control will not function if the light is not initially activated manually.

3.1 Choosing a Location

- **Solar Panel:** Select a location for the solar panel that receives direct sunlight for at least 6-8 hours daily. Avoid shaded areas from trees, buildings, or other obstructions.
- **Light Unit:** The pendant light can be installed indoors (shed, garage, barn, chicken coop) or outdoors (gazebo, patio, porch) using the provided 16.5 ft cable to connect to the solar panel.

3.2 Installation Steps

1. **Mount the Solar Panel:** Use the provided screws and anchors to securely mount the solar panel in your chosen sunny location. Adjust the angle of the panel to maximize sun exposure.
2. **Mount the Light Unit:** Install the pendant light unit in the desired indoor or outdoor area. It can be wall-mounted or hung from a ceiling using appropriate hardware.
3. **Connect the Cable:** Connect the 16.5 ft waterproof cable from the solar panel to the light unit. Ensure the connection is secure to prevent water ingress.
4. **Initial Activation:** Locate the ON/OFF switch on the light unit and press it to activate the light. The remote control will now be functional.



Image: Overview of the Aqonsie SL-288 Solar Shed Lights, showing two light units, two solar panels, and two remote controls, along with connection cables.

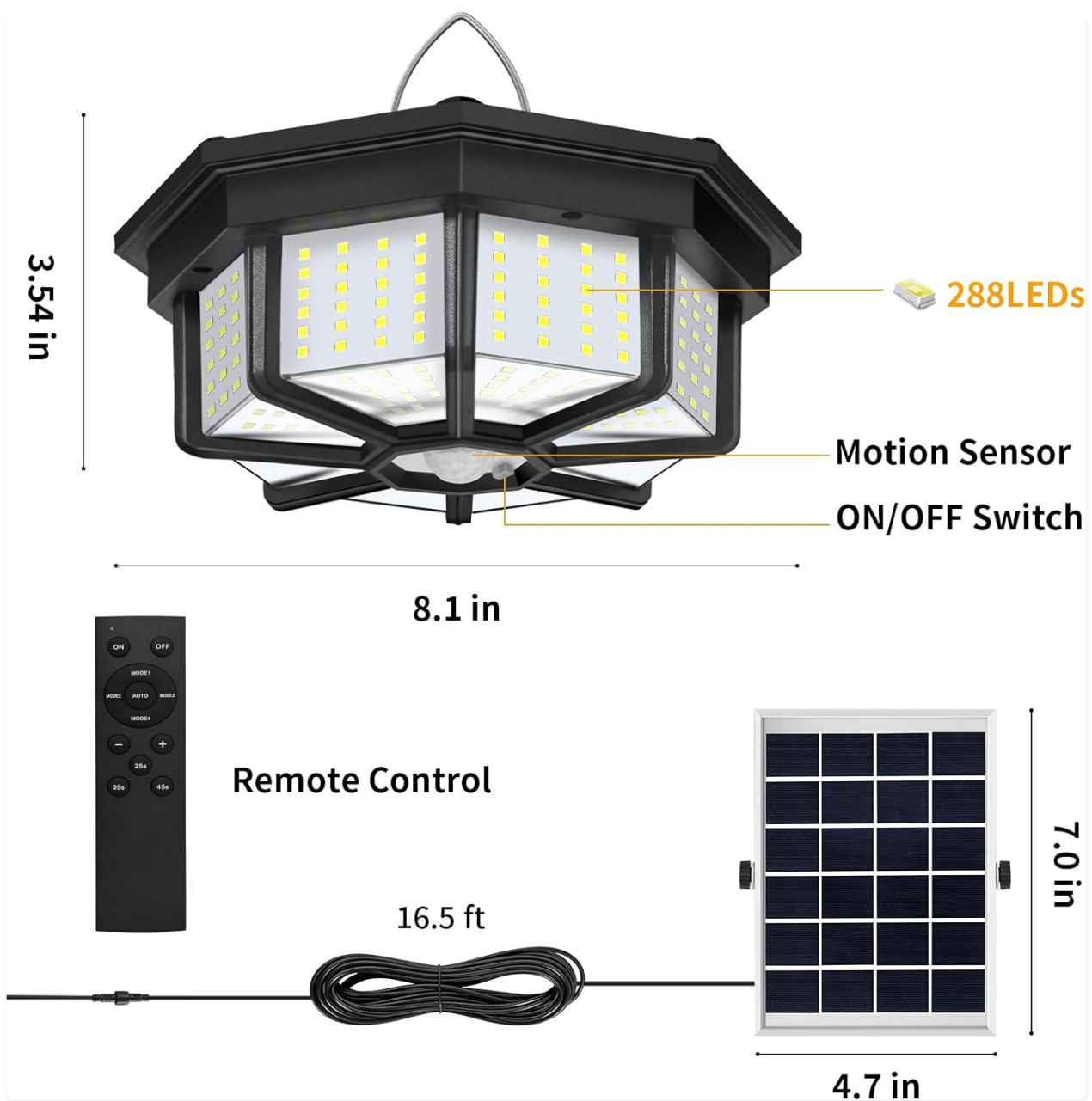
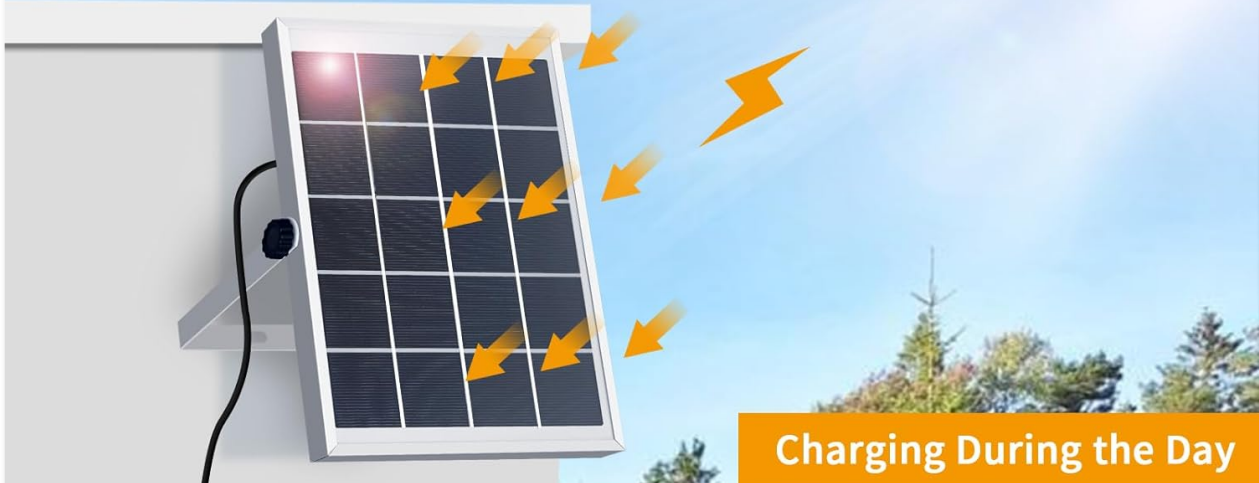
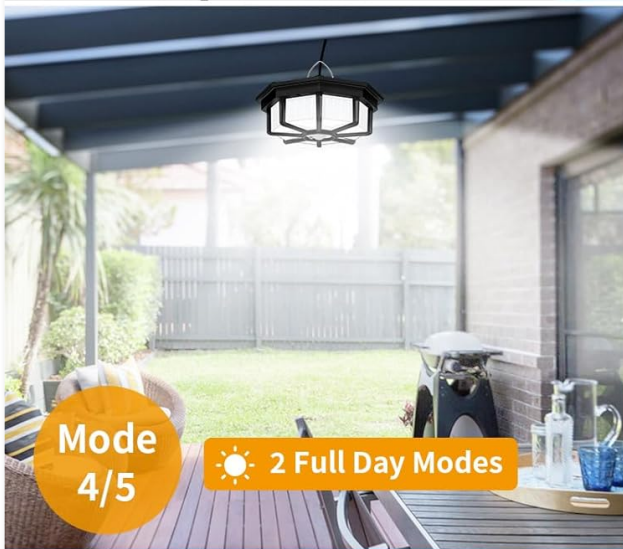


Image: Detailed dimensions of the Aqonsie SL-288 light unit (8.1 inches wide, 3.54 inches high) and solar panel (4.7 x 7.0 inches), highlighting the 288 LEDs, motion sensor, ON/OFF switch, and 16.5 ft cable length.

Daytime Available



Charging During the Day



Charge & Lighting in the Daytime



Auto Lighting at Night

Image: Illustration of the solar panel charging during the day and the light unit operating in various modes, including daytime and nighttime scenarios.

4. OPERATING INSTRUCTIONS

The Aqonsie SL-288 Solar Shed Lights offer multiple operating modes controlled by the included remote.

4.1 Remote Control Functions

- **ON/OFF:** Power the light on or off.
- **MODE 1-5:** Select desired lighting mode.
- **Brightness Adjustment:** Adjust light intensity (e.g., 20%, 40%, 60%, 80%, 100%).
- **Sensing Delay:** Set the duration the light stays on after motion detection (25s, 35s, 45s).

4.2 Lighting Modes

The light features 5 distinct modes, catering to different lighting needs:

- **MODE 1 (Night Motion Dim to Bright):** At night, the light stays dim (25% brightness) and brightens to 100% for 15 seconds when motion is detected.
- **MODE 2 (Night Motion Off to Bright):** At night, the light remains off and turns on to 100% brightness for

15 seconds when motion is detected.

- **MODE 3 (Night Constant ON):** At night, the light stays constantly on at 25% brightness.
- **MODE 4 (Daytime Motion Off to Bright):** During the day, the light remains off and turns on to 100% brightness for 15 seconds when motion is detected.
- **AUTO MODE 5 (Daytime Constant ON with Auto Switch):** The light stays on all day at 25% brightness. It automatically switches to MODE 4 (Daytime Motion Off to Bright) when the battery level drops to 50%.

Important Note for Daytime Use: If the solar panel is connected, Modes 1, 2, and 3 will only activate when the solar panel is covered or in darkness (at night). Modes 4 and AUTO Mode 5 are specifically designed for daytime operation.

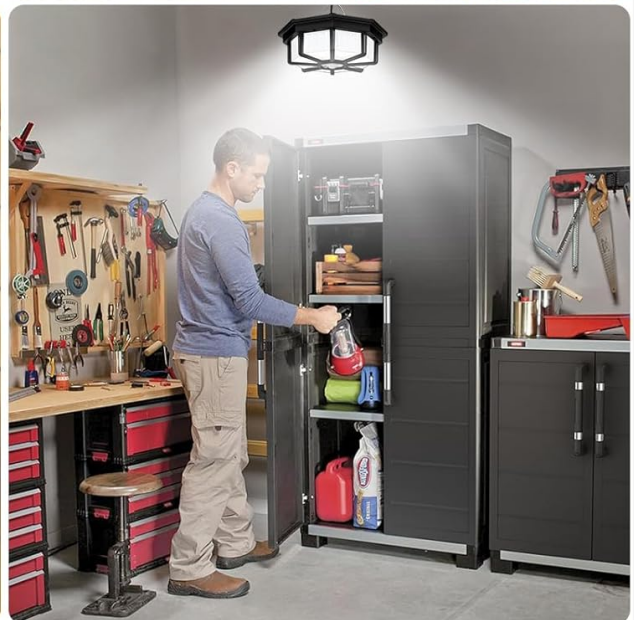


Image: Visual representation of the 5 lighting modes, illustrating how the light behaves with and without motion detection during night and day.



Image: Depicts the remote control being used to adjust the motion sensing delay to 25s, 35s, or 45s, with a family walking towards a garage illuminated by the solar light.

5. MAINTENANCE

Regular maintenance ensures optimal performance and extends the lifespan of your solar shed lights.

- **Clean Solar Panel:** Periodically wipe the solar panel surface with a soft, damp cloth to remove dust, dirt, snow, or debris. A clean panel ensures efficient charging.
- **Check Connections:** Ensure all cable connections between the solar panel and the light unit remain secure and free from damage.
- **Battery Care:** The integrated Lithium Polymer batteries are designed for long-term use. Avoid prolonged storage in extreme temperatures.
- **General Cleaning:** Clean the light unit with a soft, dry cloth as needed. Do not use abrasive cleaners.

6. TROUBLESHOOTING

If you encounter issues with your Aqonsie SL-288 Solar Shed Lights, refer to the following common solutions:

- **Light Not Turning On:**

- Ensure the light unit's ON/OFF switch has been pressed to the 'ON' position.
- Verify the solar panel is receiving adequate direct sunlight for charging.
- Check that the cable connection between the solar panel and light unit is secure.
- Confirm the selected lighting mode is appropriate for the current light conditions (e.g., night modes won't work in daylight if the solar panel is exposed).

- **Light Not Charging Effectively:**

- Clean the solar panel surface to remove any obstructions.
- Relocate the solar panel to an area with more direct, unobstructed sunlight.
- Ensure the solar panel is angled correctly towards the sun.

- **Remote Control Not Responding:**

- Ensure the light unit's ON/OFF switch has been pressed to the 'ON' position first.
- Check the battery in the remote control and replace if necessary.
- Ensure there are no obstructions between the remote and the light unit's sensor.

- **Motion Sensor Not Working:**

- Verify the light is in a motion-sensing mode (Mode 1, 2, 4, or AUTO Mode 5).
- Ensure the sensor is not obstructed or dirty.
- Test the sensor's range and sensitivity.

7. SPECIFICATIONS

Feature	Specification
Model Number	SL-288
Brand	Aqonsie
Light Source Type	LED
Number of LEDs	288
Brightness	1200 lumens
Power Source	Solar Powered
Battery Type	2 Lithium Polymer batteries (included)
Voltage	12 Volts (DC)
Material	Acrylonitrile Butadiene Styrene (ABS)
Waterproof Rating	IP65
Connection Cable Length	16.5 feet
Product Dimensions (Light)	7.5"L x 7.5"W x 4.5"H

Feature	Specification
Item Weight	4.71 pounds
Special Features	Motion Sensor, Daytime Availability Modes, Remote Control

8. WARRANTY AND SUPPORT

For warranty information or technical support, please refer to the product packaging or contact Aqonsie customer service directly. Contact details are typically available on the manufacturer's official website or through your purchase platform.