

## SOOMFON XF-CN001-UK

# SOOMFON Studio Control Deck User Manual

Model: XF-CN001-UK

## 1. INTRODUCTION

The SOOMFON Studio Control Deck is a powerful and versatile tool designed to streamline your digital workflow. Featuring 15 customizable LCD keys and an integrated information dashboard, it allows for one-touch control of applications, tools, and platforms, making it ideal for live streaming, video editing, music production, and more. This manual provides detailed instructions on setting up, operating, maintaining, and troubleshooting your device.



Image: The SOOMFON Studio Control Deck, showcasing its 15 customizable LCD keys and ergonomic stand. The keys display various application icons, indicating its primary function as a control interface.

## 2. SETUP

### 2.1 Package Contents

- 1 x SOOMFON Studio Control Deck
- 1 x USB-A to USB-C Cable
- 1 x Removable Stand

### 2.2 Hardware Connection

1. Place the SOOMFON Studio Control Deck on a stable surface. You may use the included removable stand to adjust its angle for optimal viewing and access.
2. Connect one end of the provided USB-A to USB-C cable to the USB-C port on the back of the Control Deck.
3. Connect the other end of the USB-A cable to an available USB port on your computer (PC or Mac). The

device will power on automatically.

## 2.3 Software Installation

To fully utilize the SOOMFON Studio Control Deck, you must install the accompanying software. This software allows you to customize keys, integrate with applications, and manage settings.

1. Open your web browser and navigate to the official download page:
  - For Windows: [sm.key123.vip/win](https://sm.key123.vip/win)
  - For macOS: [sm.key123.vip/mac](https://sm.key123.vip/mac)
2. Download the appropriate software version for your operating system.
3. Run the installer and follow the on-screen prompts to complete the installation.
4. Once installed, launch the Control Deck application. The software interface will appear, allowing you to begin customization.

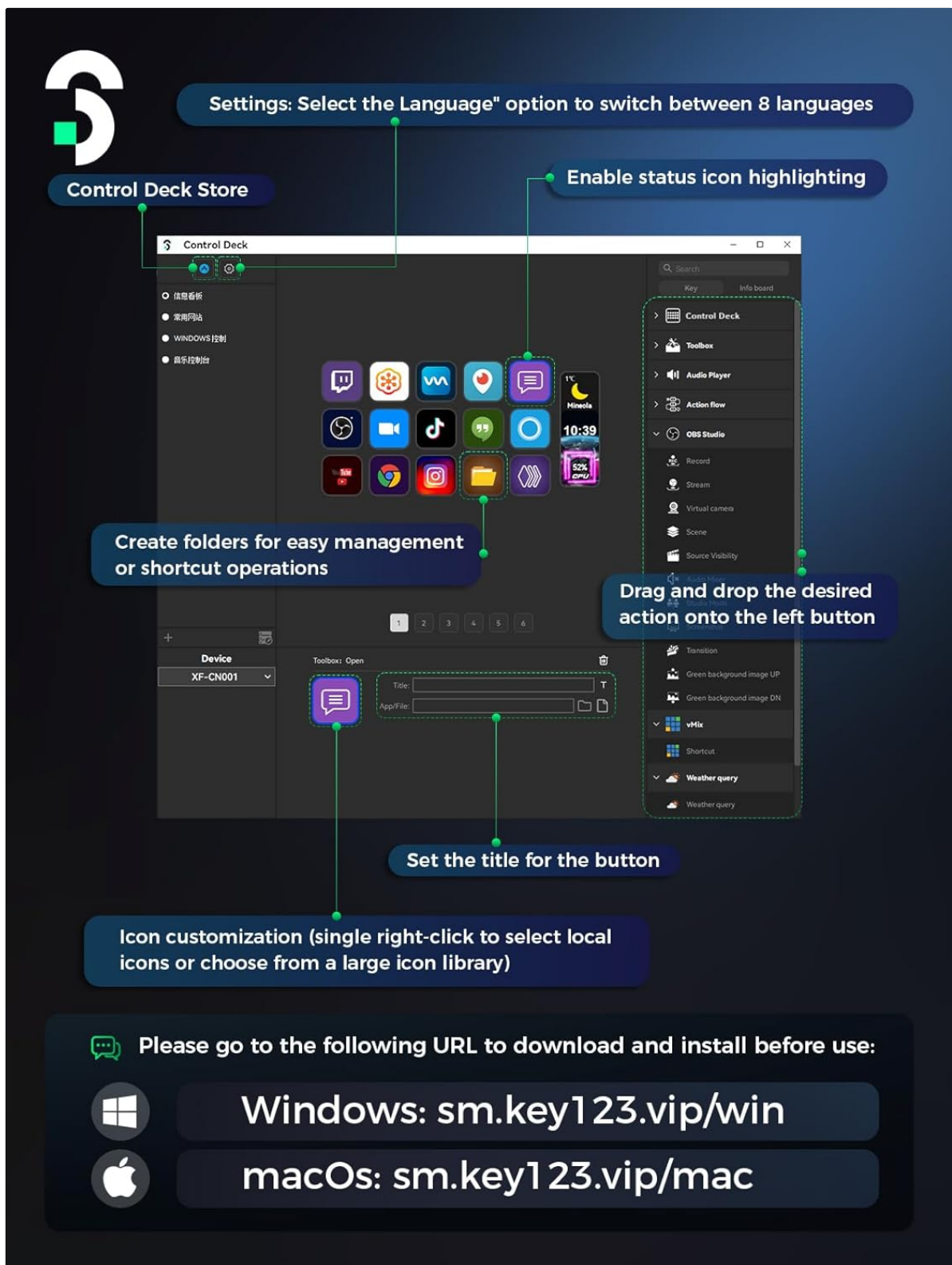


Image: A screenshot of the SOOMFON Control Deck software interface, showing options for language selection, status icon highlighting, folder creation, drag-and-drop actions, button title setting, and icon customization. Download links for Windows and macOS are also visible.

### 3. OPERATING THE CONTROL DECK

#### 3.1 Customizable LCD Keys

The SOOMFON Studio Control Deck features 15 LCD keys that can be fully customized to trigger actions, launch applications, or control various functions. Each key's icon can be personalized with your preferred images.

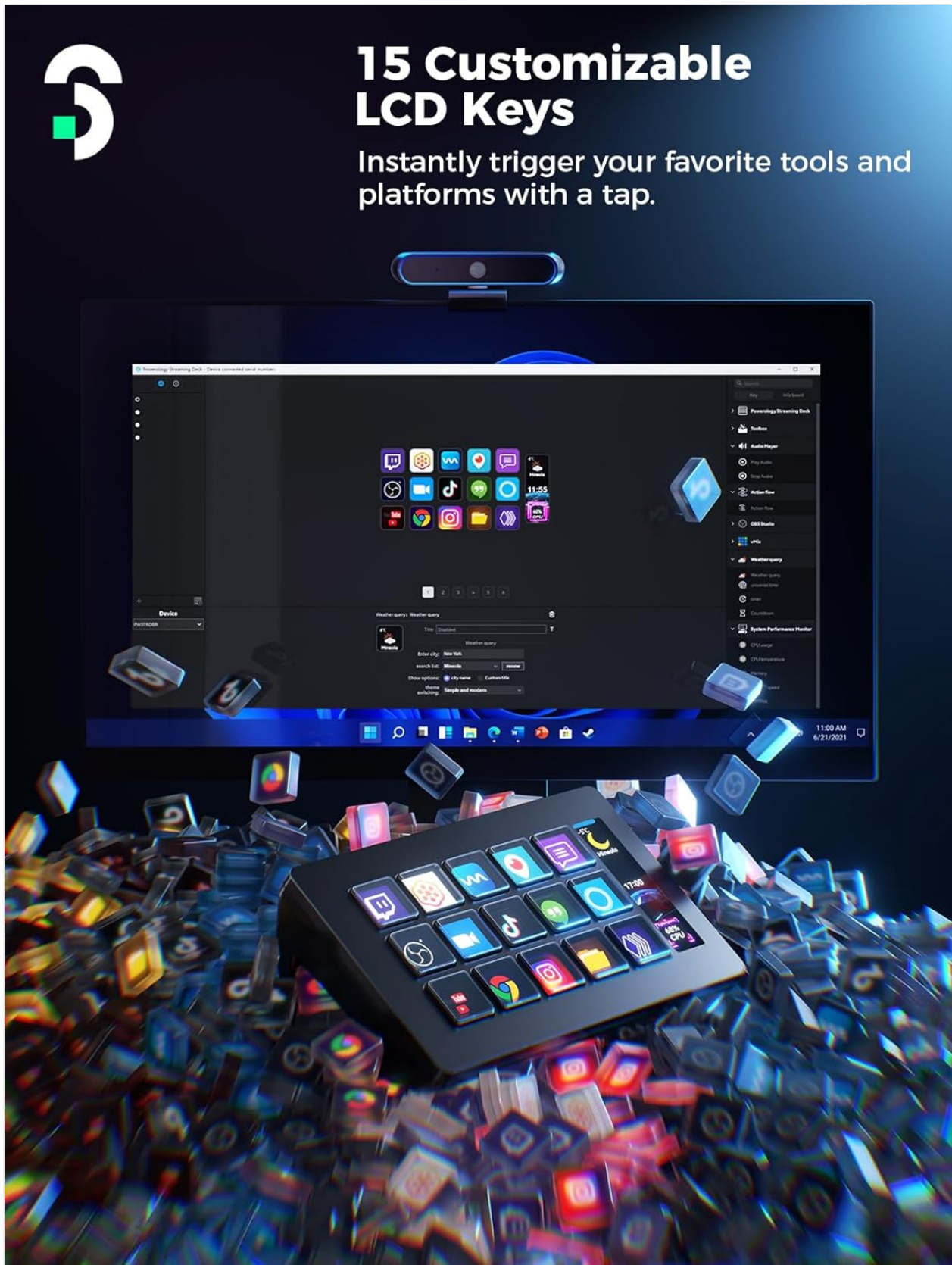


Image: A close-up view of the SOOMFON Studio Control Deck, highlighting its 15 customizable LCD keys. The keys display various icons representing different applications and functions, emphasizing their instant trigger capability.

### 3.2 One-Touch Operation

The device simplifies complex tasks into single-touch actions. You can program keys to:



- Launch social media posts.
- Adjust audio levels.
- Mute microphones.
- Control smart lighting.
- Execute multi-step macros.

This functionality is beneficial for streamers, content creators, and anyone requiring quick access to a wide range of shortcut keys.

### **3.3 Integrated Information Dashboard**

The side dashboard on the Control Deck provides instant information display. You can customize it to show up to three pieces of information, such as CPU temperature, memory usage, or weather updates.



# Customized Information Dashboard -Display Only

You can freely customize 3 pieces of information, such as: CPU temperature, memory, weather, etc.



Image: A detailed view of the SOOMFON Studio Control Deck's customized information dashboard, displaying real-time data such as temperature, time, and CPU usage. This highlights its capability to provide instant system feedback.

## 3.4 Software Compatibility and Integration

The SOOMFON Studio Control Deck offers built-in support for a wide range of popular software and platforms, enhancing your control over various applications.



# Powerful Integrated Control

Built-in OBS, YouTube, vMix and other massive software and hardware, more new operations can be downloaded from Control Deck store.



Image: A visual representation of the SOOMFON Studio Control Deck's powerful integrated control capabilities, showing a multitude of software and hardware icons that can be managed, emphasizing its extensibility through the Control Deck store. Supported applications include:

- OBS Studio (Windows: v27.0, 28.0+, macOS: v28.0+)
- Twitch
- YouTube
- Twitter
- Discord



- Spotify
- And many more, with additional operations downloadable from the Control Deck store.



Image: A collage illustrating the wide range of applications for the SOOMFON Studio Control Deck, including Live Streaming, Music Production, Game Programming, and Photo Editing, demonstrating its versatility across creative and professional fields.

### 3.5 4-Layer Virtual Keyboard

The Control Deck supports a 4-layer virtual keyboard, allowing you to trigger multiple actions simultaneously and automatically switch between different scenes. This feature is invaluable for complex workflows in video creation, podcasting, and graphic design.



# 4-Layer Virtual Keyboard

Trigger multiple actions at once, automatically switch multiple scenes in an instant - video creation, podcasting, graphic design and beyond.



Image: A diagram illustrating the 4-Layer Virtual Keyboard feature of the SOOMFON Studio Control Deck, showing how it can trigger multiple actions and automatically switch scenes, beneficial for video creation, podcasting, and graphic design.

## 3.6 Customizing Key Icons and Layouts

The software allows for extensive customization of key icons and keyboard layouts. You can create as many layouts as needed to suit different tasks or applications.





# Customizable Key icons

Customize as many keyboard layouts as you like.

**Work Efficiently:**  
Open applications and websites quickly

**Smooth Live Streaming:**  
Easily control audio, video and voice

**Easy Editing:**  
Improve creative efficiency

Image: A visual demonstrating the customizable key icons feature of the SOOMFON Studio Control Deck, showing various keyboard layouts for efficient work, smooth live streaming, and easy editing, highlighting its adaptability to user preferences.

## 4. MAINTENANCE

To ensure the longevity and optimal performance of your SOOMFON Studio Control Deck, follow these

maintenance guidelines:

- **Cleaning:** Use a soft, dry, lint-free cloth to wipe the surface of the device. For stubborn smudges, slightly dampen the cloth with water. Avoid using harsh chemicals, abrasive cleaners, or solvents, as these can damage the LCD screens and ABS material.
- **Storage:** When not in use for extended periods, store the device in a cool, dry place away from direct sunlight and extreme temperatures.
- **Handling:** Handle the device with care. Avoid dropping it or subjecting it to strong impacts, which can damage internal components or the LCD keys.
- **Cable Care:** Do not bend or crimp the USB cable excessively. Always grasp the plug, not the cable, when disconnecting.

## 5. TROUBLESHOOTING

---

If you encounter issues with your SOOMFON Studio Control Deck, refer to the following common problems and solutions:

- **Device Not Recognized:**
  - Ensure the USB cable is securely connected to both the Control Deck and your computer.
  - Try connecting to a different USB port on your computer.
  - Restart your computer.
  - Verify that the Control Deck software is installed and running.
- **Keys Not Responding:**
  - Check if the Control Deck software is active and properly configured.
  - Ensure that actions are assigned to the keys in the software.
  - Restart the Control Deck software.
- **Software Crashes or Freezes:**
  - Ensure your operating system and Control Deck software are up to date.
  - Close any unnecessary background applications that might be consuming system resources.
  - Reinstall the Control Deck software if the issue persists.
- **LCD Screens Are Blank or Flickering:**
  - Check the USB connection. Insufficient power can cause display issues.
  - Restart the Control Deck software and/or your computer.
  - If the issue persists, contact customer support.

If these steps do not resolve your issue, please refer to the support section or the manufacturer's website for further assistance.

## 6. SPECIFICATIONS



Feature	Detail
Model Number	XF-CN001-UK
Brand	SOOMFON
Color	Black
Material	Acrylonitrile Butadiene Styrene (ABS)
Number of Keys	15
Special Feature	Backlit Keys
Interface	USB
Human Interface Input	Buttons
Platform Compatibility	Windows, macOS
Included Components	1 USB-A to USB-C cable, 1 Stream Control Deck




## 7. WARRANTY AND SUPPORT




Specific warranty details and comprehensive support information for the SOOMFON Studio Control Deck (Model: XF-CN001-UK) are not provided in the available product data. For the most accurate and up-to-date information regarding product warranty, technical support, and service, please visit the official SOOMFON website or contact their customer service directly.

It is recommended to retain your proof of purchase for any warranty claims.

© 2024 SOOMFON. All rights reserved.

### Related Documents - XF-CN001-UK

	<a href="#">Stream Controller Quick Start Guide</a> A concise guide to setting up and using the Stream Controller.
	<a href="#">SOOMFON Stream Controller SE CN002 Quick Start Guide - Setup and Usage</a> Get started quickly with the SOOMFON Stream Controller SE (Model CN002). This guide provides essential information on setup, software installation, and basic operation for streamers, including specifications and warranty details.
	<a href="#">Soomfon SF-BT013 Wireless Audio Streaming Box: User Manual &amp; Guide</a> Comprehensive user manual for the Soomfon SF-BT013 Audio Streaming Box, a versatile Bluetooth transmitter and receiver for home appliances. Learn how to connect, use TX/RX/Bypass modes, troubleshoot issues, and understand FCC compliance.

	<p><a href="#">SOOMFON SF-BT013 Audio Streaming Box User Manual - Wireless Transmitter &amp; Receiver</a></p> <p>Comprehensive user manual for the SOOMFON SF-BT013 Audio Streaming Box, a 2-in-1 Bluetooth transmitter and receiver. Learn how to set up and use its RX, TX, and Bypass modes for seamless wireless audio.</p>
	<p><a href="#">SOOMFON BT17 Audio Streaming Box User Manual</a></p> <p>User manual for the SOOMFON BT17 Audio Streaming Box, a 3-in-1 Bluetooth 5.0 audio adapter with LCD display, supporting Optical, AUX, and RCA connections, and bypass mode.</p>
	<p><a href="#">SOOMFON ALDX Bluetooth Receiver B9011 User Manual and Specifications</a></p> <p>Detailed specifications and user information for the SOOMFON ALDX Bluetooth Receiver, model B9011. Includes product dimensions, printing details, material, and general tolerances.</p>