

autoabc AR-X123

autoabc 12.3 Inch Wireless CarPlay/Android Auto Multimedia Linux Touchscreen User Manual

Model: AR-X123

1. INTRODUCTION

This manual provides detailed instructions for the installation, operation, and maintenance of your autoabc 12.3 Inch Wireless CarPlay/Android Auto Multimedia Linux Touchscreen. This device is designed to enhance your in-car experience by integrating modern connectivity features while retaining your vehicle's original functionalities.

2. COMPATIBILITY

This product is compatible with specific Mercedes Benz models equipped with NTG5.0, NTG5.1, and NTG5.2 systems. Please verify your vehicle's system before installation.

- Mercedes Benz GLC Class X253 (2015-2018)
- Mercedes Benz GLA Class X156 (2016-2018)
- Mercedes Benz CLA Class C117 (2016-2018)
- Mercedes Benz A Class (2016-2018)
- Mercedes Benz C Class W205 (C180, C200, C220, C250, C320, C43 AMG, C63 AMG, C63 GLS, C650)

Important Note:

This device is **not compatible** with NTG4.0, NTG4.5, or NTG4.7 systems. Please ensure your original car system matches the compatible versions. If unsure, consult a professional or contact customer support.

Only fit for Mercedes Benz c Class W205 GLC2015-2018
Year with NTG5.0/5.1/5.2

Note : Please check your original car system, this device is not compatible with NTG4.0/4.5/5 system

Please do not impulse purchase :

Please check the website picture to make sure your car dashboard picture is the same as the listings , other wise you need to buy another listing product, If you cannot make sure or you are confused , please get help from us.



Fit for NTG 5.0/5.1 /5.2



NTG4.5/4.7- Don't Fit



NTG4.0-Don't Fit

Models compatible with more systems are in progress

Image: Compatibility chart for Mercedes Benz NTG systems. The image displays examples of NTG5.0/5.1/5.2 as compatible and NTG4.5/4.7 and NTG4.0 as incompatible, with corresponding screen visuals.

3. PRODUCT OVERVIEW AND FEATURES

The autoabc 12.3 Inch Multimedia Linux Touchscreen upgrades your vehicle's display with a high-definition screen and integrated smart features.

- **Wireless CarPlay/Android Auto:** Seamlessly integrate your smartphone for navigation, calls, messages, and music via voice assistant.
- **HD 12.3 Inch Screen:** Features a 1920x720 resolution LED display for an enhanced visual experience. Supports screen projection for photos and videos.
- **Original Car Function Retention:** Maintains all original vehicle functions, including radio, booster, joystick controls, rear view camera, and display of speed, fuel level, oil pressure, and safety warnings.
- **Camera Functionality:** Supports factory original reverse camera parking radar, aftermarket reverse cameras, and 360-degree cameras. Includes support for front view camera DVR (CVBS input).

Adds More Functions to Your Existing While Keeping OEM System

Please click "Original car interface" icon to enter



Carplay



Android Auto



Airplay



Autolink



Linux



1920*720



12.3 inch



USB

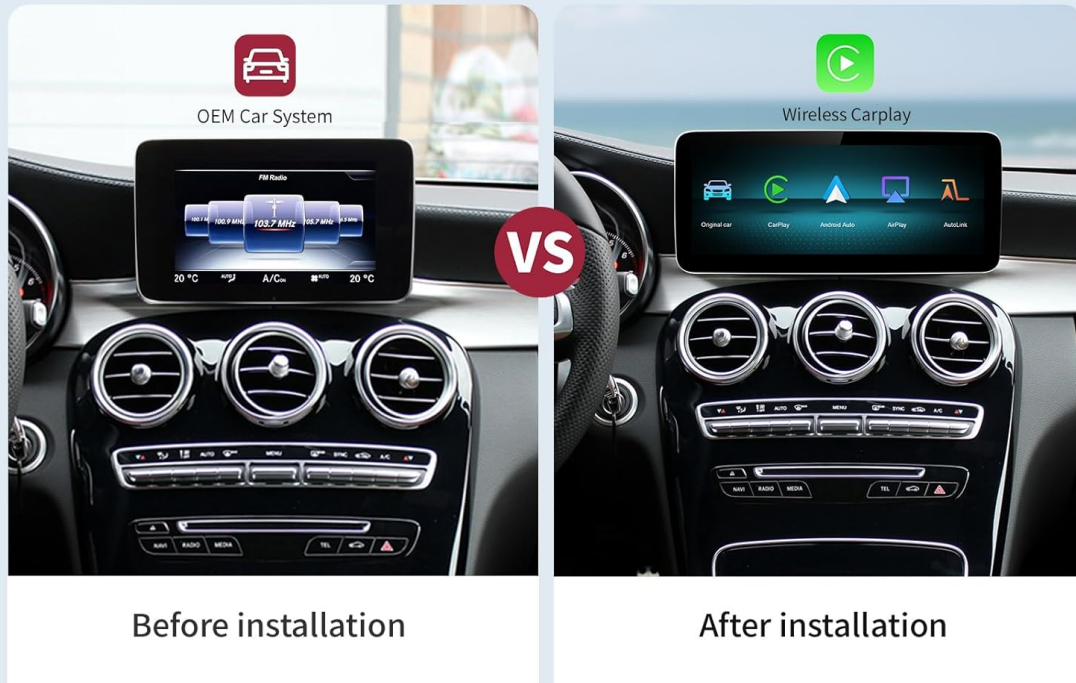
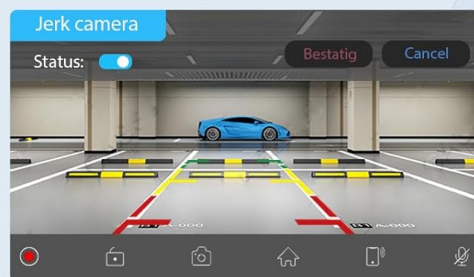
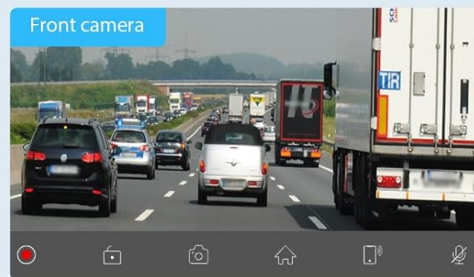


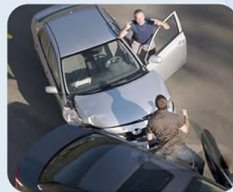
Image: Comparison of the car's dashboard before and after installing the autoabc 12.3-inch touchscreen, highlighting the larger display and new interface.

Camera Function

Support factory original reverse camera parking radar
Support aftermarket reverse camera and 360 camera
Support front view camera DVR (CVBS input)



Avoid Hidden Dangers



Avoid reversing accidents



Image: Four-panel display showing the screen's capabilities with CarPlay, Android Auto, Airplay, and Autolink, demonstrating smartphone integration.

Compatible Original CANBUS Protocol

The OEM Vehicle Function Can Be Retained For Use



Keep Original
Car System



Retain OEM Factory
CD/DVD Player



Retain OEM Factory
Steering Wheel Control



Retain OEM Horn
Speaker Sound Output



Compatible OEM
Reversing Camera



Compatible OEM
iDrive Rotation Button

Image: Illustration of the camera functions, including front camera view, parking assist lines, and a 360-degree overhead view of a car, indicating support for various camera systems.

Easily Switch from Factory System to Linux

Quick switch to original system

- Keep original car function
- Keep original car button controls
- Keep amplifier function
- Control way is the same as before



Image: Six panels demonstrating the retention of original car functions: car system, CD/DVD player, steering wheel control, horn speaker sound output, reversing camera, and iDrive rotation button.

4. SETUP AND INSTALLATION

Installation of this unit typically involves replacing the original screen and connecting the provided cables. While designed for ease of installation, professional assistance is recommended if you are unfamiliar with car electronics.

4.1. Pre-Installation Check

- Confirm your vehicle's NTG system version (NTG5.0, NTG5.1, or NTG5.2).
- Ensure all components listed in the "What's in the Box" section are present.
- Disconnect the vehicle's battery before starting installation.

4.2. General Installation Steps (Consult a professional or installation video for detailed steps)

1. Carefully remove the original car screen and trim panels.
2. Connect the provided power cable and LVDS/USB cable to the new unit and the vehicle's wiring harness.
3. If applicable, install the bracket for the new screen.
4. Route all cables neatly to avoid interference.
5. Mount the new 12.3-inch touchscreen in place.
6. Reconnect the vehicle's battery and test all functions before reassembling the trim.

Warning:

If you are unsure about the installation process, it is highly recommended to seek assistance from a qualified car workshop or refer to official installation videos provided by the manufacturer.

5. OPERATING INSTRUCTIONS

5.1. Switching Between Systems

The unit allows seamless switching between the new Linux system and the original car system.

- To access the Linux system (CarPlay, Android Auto, AirPlay, Autolink), select the corresponding icon on the main interface.
- To return to the original car system, select the "Original car" icon or use the designated button/control as per your vehicle's original setup.

How to customize the startup screen

The default startup logo is AUTOABC

- ① **Create a PNG image with a resolution of 1920 * 720**



- ② **Change the name of the image to 'updatelogo.png' and place it in the root directory of the USB drive**



- ③ **Insert the USB drive into the reserved USB port and it will prompt that the logo change is successful**



- ④ **Restart the car**

Image: Flowchart illustrating the process of switching between the new Linux system interface (showing CarPlay, Android Auto, AirPlay, Autolink icons) and the original car system interface (showing radio frequencies).

5.2. Wireless CarPlay / Android Auto

To use Wireless CarPlay or Android Auto:

1. Ensure Bluetooth is enabled on your smartphone.
2. On the car screen, navigate to the CarPlay or Android Auto section.

3. Search for and connect to the device's Bluetooth name from your phone's Bluetooth settings.
4. Follow any on-screen prompts on both your phone and the car display to establish the connection.

Once connected, you can access navigation, phone contacts, email, notifications, and music directly on the touchscreen.

5.3. Camera Functions

The system automatically displays the rear view when the vehicle is in reverse gear. You can also access front camera or 360-degree camera views if installed and configured.

5.4. Control Methods

The system supports multiple control methods:

- **Touchscreen:** Directly interact with the 12.3-inch display.
- **Original Joystick Controls:** Utilize your vehicle's existing joystick or rotary controller.
- **Steering Wheel Controls:** Use your steering wheel buttons for audio control and other functions.

6. CUSTOMIZATION

6.1. Customizing the Startup Screen Logo

You can personalize the startup screen with a custom logo.

1. Create a PNG image with a resolution of 1920 x 720 pixels.
2. Rename the image file to '**updatelogo.png**'.
3. Place this file in the root directory of a USB drive.
4. Insert the USB drive into the reserved USB port on the unit. The system will prompt you when the logo change is successful.
5. Restart the car to apply the new startup logo.

Product Information



Front



Back



Carplay



Android Auto



Airplay



Autolink



Linux



1920*720



12.3 inch



USB

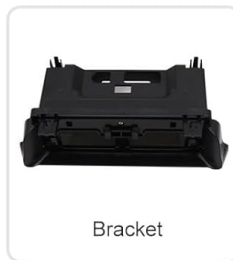
Any issue please get help from us, We are more
Vakume professional than auto repair shop.
Tuan ett Please do not finalize install until you have
tested every function on your car.



Power cable



LVDS/USB cable



Bracket

Image: Step-by-step visual guide on how to customize the startup screen logo using a USB drive with a 1920x720 PNG image named 'updatelogo.png'.

7. PRODUCT INFORMATION AND SPECIFICATIONS

7.1. What's in the Box

- autoabc 12.3 Inch Multimedia Linux Touchscreen
- Power Cable
- LVDS/USB Cable
- Bracket (for specific models, if required)
- User Manual (this document)



Image: Display of the product components: the main screen unit (front and back views), power cable, LVDS/USB cable, and mounting bracket.

7.2. Technical Specifications

- **Model Number:** AR-X123
- **Screen Size:** 12.3 inches
- **Resolution:** 1920 x 720 HD LED
- **Operating System:** Linux
- **Connectivity:** Wireless CarPlay, Android Auto, AirPlay, Autolink, Bluetooth, USB
- **Audio Output Mode:** Stereo
- **Surround Sound Channel Configuration:** 4.0
- **Video Encoding Support:** H.264, H.265/HEVC, VP9, AV1, MPEG-4
- **Item Weight:** 2.2 pounds
- **Manufacturer:** autoabc

8. MAINTENANCE

To ensure the longevity and optimal performance of your autoabc touchscreen, follow these maintenance guidelines:

- **Cleaning:** Use a soft, lint-free cloth to clean the screen. For stubborn smudges, lightly dampen the cloth with water or a screen-safe cleaner. Avoid harsh chemicals or abrasive materials.
- **Temperature:** Avoid exposing the unit to extreme temperatures for extended periods.
- **Software Updates:** Periodically check the manufacturer's website or contact support for any available software updates to ensure optimal performance and compatibility.
- **Cable Connections:** Ensure all cables remain securely connected. Avoid pulling on cables forcefully.

9. TROUBLESHOOTING

If you encounter issues with your autoabc touchscreen, refer to the following common troubleshooting steps:

- **No Power:**
 - Check all power cable connections to ensure they are secure.
 - Verify the vehicle's battery is properly connected and charged.
 - Check relevant fuses in your vehicle's fuse box.
- **No Sound:**
 - Ensure the volume on both the unit and your vehicle's original audio system is turned up.
 - Confirm the audio input source is correctly selected (e.g., AUX, Bluetooth).
 - If using Bluetooth, ensure your phone is properly paired and connected.
- **CarPlay/Android Auto Not Connecting:**
 - Ensure Bluetooth and Wi-Fi are enabled on your smartphone.
 - Forget the device from your phone's Bluetooth settings and re-pair.
 - Restart both your phone and the car's multimedia system.
 - Check for any software updates for your phone's operating system or the car unit.
- **Screen Not Responding to Touch:**
 - Restart the unit.
 - Ensure the screen is clean and free of debris.
- **Original Car Functions Not Working:**
 - Verify all original wiring harness connections are correctly made.
 - Ensure the unit is properly switched to the "Original car" system mode.

If these steps do not resolve the issue, please contact autoabc customer support for further assistance.

10. WARRANTY AND SUPPORT

autoabc provides a one-year global warranty for this product, covering manufacturing defects and malfunctions under normal use. Additionally, lifetime technical service support is available.

- **Warranty Period:** 1 year from the date of purchase.
- **Technical Support:** Lifetime online technical support via Amazon email.

For any questions, problems, or technical assistance, please contact autoabc customer support through Amazon's messaging system. Please have your product model number (AR-X123) and purchase details ready when contacting support.



Image: Graphic detailing customer support availability, including 24-hour response, 60-day return policy, 12-month replacement, and lifetime technical support.

© 2025 autoabc. All rights reserved.

Related Documents - AR-X123

	<p>AUTOABC BMW Multimedia Smart Touchscreen User Manual for Linux Screen</p> <p>Comprehensive user manual for the AUTOABC BMW Multimedia Smart Touchscreen, detailing installation, setup, features like CarPlay, Android Auto, AirPlay, Autolink, and troubleshooting for BMW vehicles with Linux screens.</p>
<p>User Manual</p> <p>For BMW Linux screen</p> <p><small>Thank you for choosing AUTOABC's BMW Multimedia Smart Touchscreen. For the best experience when using this product, please read this manual carefully before installation and use.</small></p>	<p>AUTOABC BMW Linux Screen User Manual: Installation and Features</p> <p>This user manual provides comprehensive guidance for the AUTOABC BMW Multimedia Smart Touchscreen. It covers product introduction, installation instructions, basic settings, CarPlay/Android Auto, AirPlay/Autolink/USB features, FAQs, and detailed product specifications for BMW vehicles.</p>
<p>User Manual</p> <p>For Peugeot Citroen SMEG System</p> <p><small>PEUGEOT CITROEN SMEG SYSTEM</small></p>	<p>Peugeot Citroen SMEG System User Manual: Features & Installation Guide</p> <p>Comprehensive user manual for the Peugeot Citroen SMEG System, detailing features like CarPlay, Android Auto, AirPlay, mirroring, installation instructions, and troubleshooting for your vehicle's infotainment.</p>

	<p>AUTOABC Smart Box: Wireless CarPlay & Android Auto User Manual</p> <p>Comprehensive user guide for the AUTOABC Smart Box, detailing setup and operation for Wireless CarPlay, Android Auto, Bluetooth audio, and screen mirroring for Mercedes-Benz vehicles.</p>
<p>User Manual</p> <p>For MIB/MIB2</p> <p>English</p>	<p>AUTOABC MIB/MIB2 User Manual for Car Infotainment Systems</p> <p>Comprehensive user manual for the AUTOABC MIB/MIB2 Wireless CarPlay Module, designed for Audi A3 S3 8V B9 (2012-2021). This guide details installation, setup, and features including CarPlay, Android Auto, AirPlay, Autolink, Bluetooth, USB, and reverse camera integration.</p>
<p>User Manual</p> <p>For MMI3G</p> <p>English</p>	<p>MMI3G User Manual for Audi Vehicles</p> <p>Comprehensive user manual for the MMI3G multimedia interface, detailing installation, setup, and features like CarPlay, Android Auto, and AirPlay for Audi vehicles.</p>