

MOVE SPEED WD10

MOVE SPEED WD10 512GB USB 3.2 Gen2 Dual-Port Flash Drive User Manual

Model: WD10 | Capacity: 512GB

1. PRODUCT OVERVIEW

The MOVE SPEED WD10 is a high-performance 512GB solid-state USB flash drive featuring both USB 3.2 Gen2 (Type-A) and USB-C dual ports. It is designed for rapid data transfer with read and write speeds up to 1000MB/s, making it suitable for various devices including smartphones, tablets, computers, and gaming consoles.



Image 1.1: The MOVE SPEED WD10 512GB Dual-Port Flash Drive, showcasing its gold finish and lanyard attachment.

Key Features:

- **Dual-Port Design:** Equipped with USB 3.2 Gen2 (Type-A) and USB-C interfaces for broad compatibility.
- **High-Speed Performance:** Achieves read and write speeds of up to 1000MB/s.
- **3-Stage Push-Pull Mechanism:** Ensures secure and protected port access.
- **Durable Construction:** Features an SSD-grade chip and a zinc alloy metal shell for enhanced durability and heat dissipation.
- **Wide Compatibility:** Supports iPhone 15/16 series, Android phones, Mac, Windows PCs, smart TVs, and gaming consoles.

2. SETUP AND INITIAL USE

2.1 Connecting the Device

The MOVE SPEED WD10 flash drive is designed for plug-and-play operation. Simply insert the appropriate connector (USB-A or USB-C) into your device's port.

- **USB-A Connection:** For standard USB ports found on most computers, smart TVs, and gaming consoles.
- **USB-C Connection:** For devices with USB-C ports, such as iPhone 15/16 series, newer Android phones, MacBooks, and iPads.

USB3.2 Gen2 & Type-C

3-section push-pull port design, smooth feel
Interface is firm and not loose



Image 2.1: The dual-interface design of the MOVE SPEED WD10, showing both USB-A and USB-C connectors.

2.2 3-Stage Push-Pull Design

The device features a 3-stage push-pull mechanism to protect the connectors. To expose a port, push the slider forward until you hear a distinct 'click' sound, indicating the port is securely locked in place. To retract the port, push the slider to the center until you hear another 'click'.

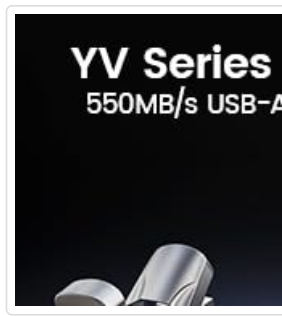


Image 2.2: Visual representation of the 3-stage push-pull port design for secure connector management.

2.3 Formatting the Drive

For optimal compatibility and performance, especially with Apple devices or for transferring files larger than 4GB, it is recommended to format the drive to the EXFAT file system. If the drive is not recognized on iPhone 15/16 series, formatting to EXFAT is required.

1. Insert the flash drive into your computer.
2. Open 'This PC' (Windows) or 'Finder' (Mac).
3. Locate the 'MOVESPEED' drive, right-click, and select 'Format'.
4. Choose 'EXFAT' as the file system.
5. Click 'Start' and confirm the formatting process.

Warning: Formatting will erase all data on the drive. Back up any important files before proceeding.

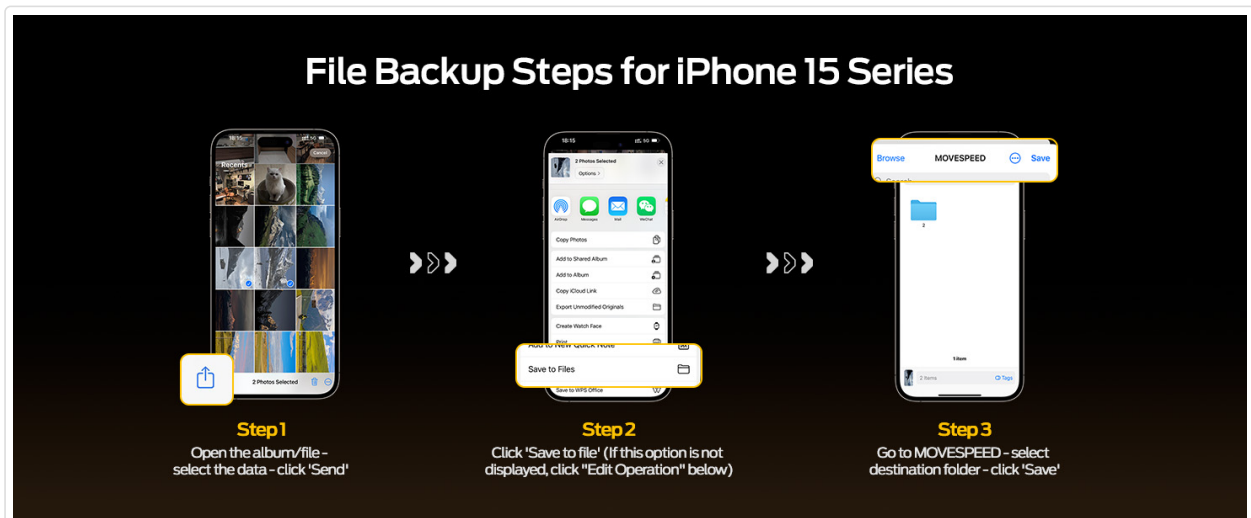


Image 2.3: Illustrated steps for formatting the MOVE SPEED WD10 flash drive on a Windows computer.

3. OPERATING INSTRUCTIONS

3.1 Data Transfer

Once connected, the flash drive will appear as an external storage device on your computer or mobile device. You can drag and drop files to and from the drive, or use your device's file management system to copy and paste.

Transfer 1GB in 1 Second

Speed up to 1000MB/s

Flash Drive Type	Speed (MB/s)
MOVESPEED WD10 Flash Drive	1000 MB/s
USB 3.2 Flash Drive	400-500 MB/s
USB 3.0 Flash Drive	100-150 MB/s
USB 2.0 Flash Drive	40 MB/s

MacBook Air

MOVESPEED

Image 3.1: The MOVE SPEED WD10 connected to a laptop, demonstrating its high-speed data transfer capability of up to 1000MB/s.

3.2 File Backup for iPhone 15 Series

The MOVE SPEED WD10 supports direct file backup from iPhone 15 series devices.

1. Open the album or file you wish to back up. Select the data and tap the 'Send' or 'Share' icon.
2. Tap 'Save to File'. If this option is not immediately visible, tap 'Edit Operation' to find it.
3. Navigate to 'MOVESPEED' in your files, select the desired destination folder, and tap 'Save'.

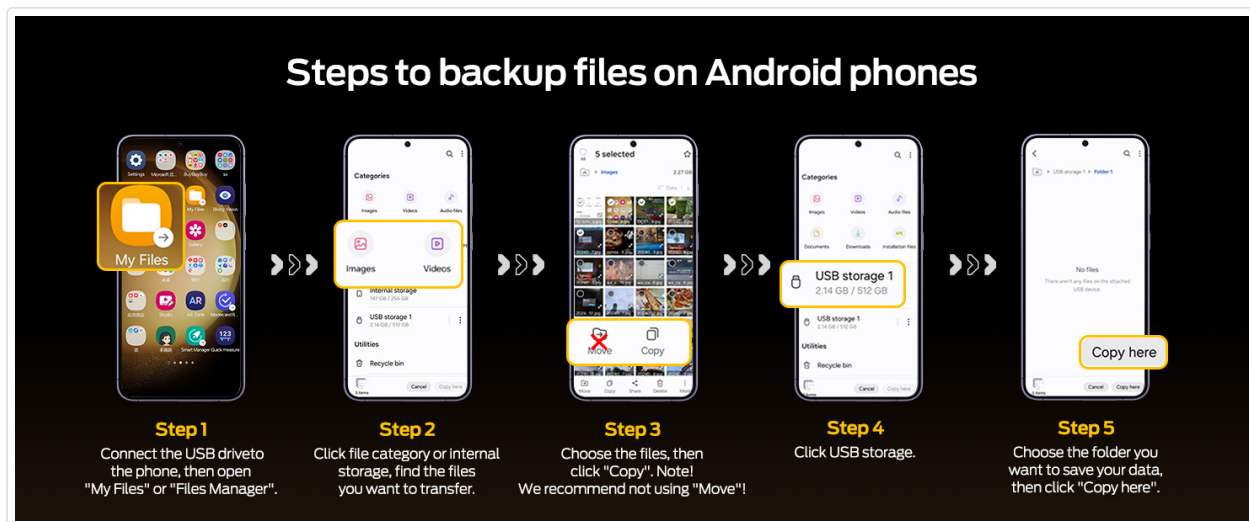


Image 3.2: Step-by-step visual guide for backing up files from an iPhone 15 series device to the MOVE SPEED WD10.

3.3 File Backup for Android Phones

To back up files from an Android phone:

1. Connect the USB drive to your phone. Open 'My Files' or 'Files Manager'.
2. Select the file category (e.g., Images, Videos) or internal storage to find the files you want to transfer.
3. Choose the files, then tap 'Copy'. (Note: 'Move' is not recommended for large transfers).
4. Tap 'USB storage'.
5. Choose the folder where you want to save your data, then tap 'Copy here'.



Image 3.3: Visual instructions for backing up files from an Android smartphone to the MOVE SPEED WD10.

3.4 4K ProRes HDR Video Recording (iPhone 15/16 Pro/Pro Max)

The MOVE SPEED WD10 supports direct 4K ProRes HDR video recording from compatible iPhone models, saving files directly to the drive without secondary transfer.

1. Go to your iPhone's System Settings > Camera. Turn on 'Apple ProRes'.
2. Open the Camera app, switch to Video mode, and tap on 'ProRes HDR' to enable it.

**This feature is only supported on iPhone 15 Pro/Pro Max and iPhone 16 Pro/Pro Max.*

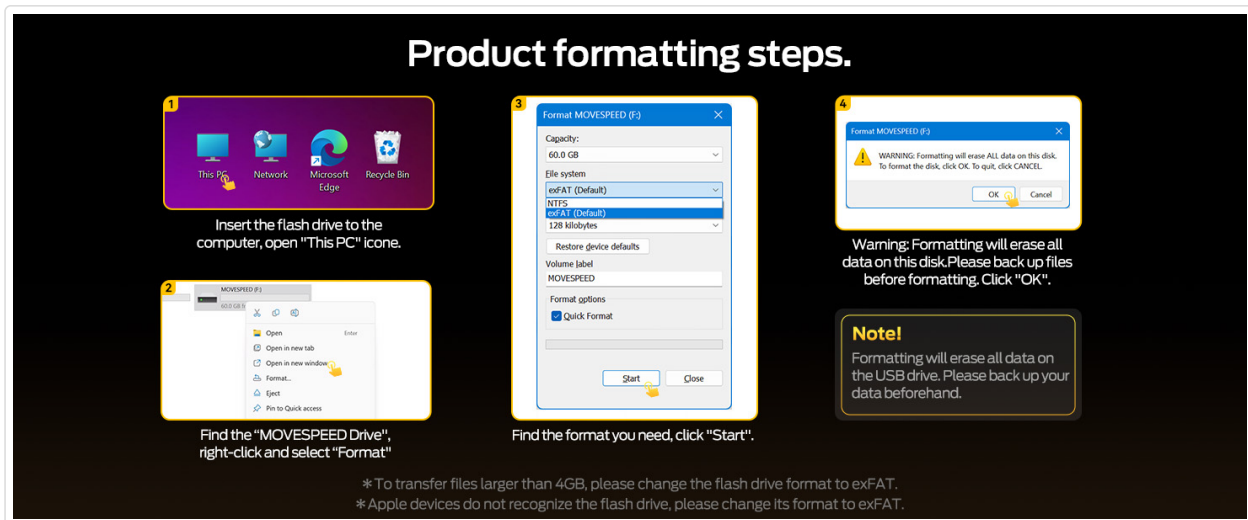


Image 3.4: Visual guide detailing the two steps to enable 4K ProRes HDR recording on compatible iPhone models.

4. MAINTENANCE AND CARE

The MOVE SPEED WD10 is constructed with an SSD-grade chip and a zinc alloy shell, providing enhanced durability. To ensure longevity and optimal performance:

- **Physical Protection:** The zinc alloy shell offers dust-proof, drop-proof, and anti-magnetic properties. While robust, avoid excessive force or dropping the device from significant heights.
- **Temperature Management:** The design helps reduce heat generation, with a maximum operating temperature of 122°F. Avoid exposing the device to extreme temperatures.
- **Cleaning:** Use a soft, dry cloth to clean the exterior. Avoid liquid cleaners or abrasive materials.
- **Safe Removal:** Always safely eject the drive from your computer or device before physically disconnecting it to prevent data corruption.

Easy to Carried

Mech Armor Style paired with Baided Lanyard
Stylish and Practical



Zinc
alloy shell



Image 4.1: The MOVE SPEED WD10 showcasing its durable zinc alloy shell and convenient braided lanyard.



Image 4.2: An internal view highlighting the SSD-grade chip, which undergoes extensive quality detection.

5. TROUBLESHOOTING

5.1 Device Not Recognized

- **Check Connection:** Ensure the flash drive is fully inserted into the USB-A or USB-C port.

- **Try Another Port/Device:** Test the drive on a different USB port or another compatible device to rule out port or device issues.
- **Format to EXFAT:** If using with iPhone 15/16 series or if experiencing recognition issues, format the drive to EXFAT as described in Section 2.3.
- **Driver Issues:** For computers, ensure your operating system's USB drivers are up to date.

5.2 Slow Transfer Speeds

- **USB Port Type:** Ensure you are using a USB 3.0 or USB 3.2 Gen2 port on your device. Connecting to a USB 2.0 port will result in significantly lower speeds.
- **File System:** Ensure the drive is formatted to EXFAT for optimal performance, especially with large files.
- **Background Processes:** Close any unnecessary applications or background processes on your computer or phone that might be consuming system resources.
- **Device Compatibility:** Verify that your device supports USB 3.2 Gen2 speeds.

5.3 Data Corruption

- **Safe Ejection:** Always safely eject the drive before removal.
- **Avoid Interruption:** Do not disconnect the drive during data transfer or formatting.
- **Scan for Errors:** Use your operating system's disk utility to scan and repair any errors on the drive.

6. SPECIFICATIONS

Brand	MOVE SPEED
Model Name	WD10
Memory Storage Capacity	512 GB
Hardware Interface	USB 3.2 Gen 2
Connectivity Technology	USB (Type-A and Type-C)
Read Speed	Up to 1000 MB/s
Write Speed	Up to 1000 MB/s
Product Dimensions	2.84"D x 0.92"W x 0.51"H (7.21 x 2.34 x 1.3 cm)
Item Weight	1.8 ounces (51 grams)
Material	Zinc Alloy Shell

7. WARRANTY AND SUPPORT

7.1 Package Contents

- MOVE SPEED WD10 Series Solid State USB-C Drive x1
- Braided Lanyard x1
- User Manual x1

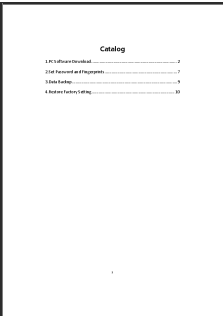
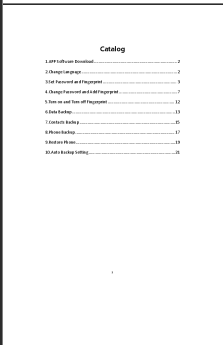

7.2 Service and Support

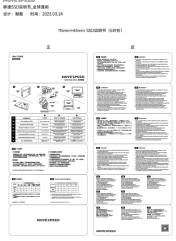


MOVE SPEED offers a 5-year service period for the WD10 flash drive. This includes:

- **30-Day Refund Policy:** If you are not satisfied with the product, a 100% refund is available within 30 days of purchase.
- **Lifetime Technical Support:** Comprehensive technical assistance is provided for the lifespan of the product.
- **Customer Service:** Access to 7x24 friendly customer service. The after-sale team aims to address issues within 24 hours.

For support inquiries, please refer to the contact information provided on the product packaging or the official MOVE SPEED website.

Related Documents - WD10

	<p>MOVE SPEED MoveSpeedDrivePro USB Flash Drive User Manual</p> <p>User manual for the MOVE SPEED MoveSpeedDrivePro USB flash drive. This guide covers PC software download and installation, setting up AES256 and fingerprint encryption, data backup procedures, and restoring factory settings. Features USB3.2, Type C, and 520MB/s speeds.</p>
	<p>Move Speed Drive User Guide: Backup, Encryption, and Fingerprint Features</p> <p>A comprehensive guide to the Move Speed Drive, detailing how to use its software for data backup, phone backup, restore operations, and security features like password and fingerprint encryption.</p>
	<p>MOVESPEED USB Solid State Drive User Guide and Warranty Information</p> <p>Comprehensive user guide for MOVESPEED USB 3.2 Solid State Drives. Learn about plug-and-play setup, high-speed connectivity, safe data handling, warranty policies, and environmental compliance.</p>

	<p>Movespeed SSD User Manual - Global Edition</p> <p>Comprehensive user manual for Movespeed SSDs, covering installation, specifications, and usage for various devices including PS5, desktops, and laptops. This global edition provides detailed instructions and troubleshooting tips.</p>
	<p>MOVE SPEED S80 80,000mAh 130W Portable Power Station User Guide</p> <p>Comprehensive user guide for the MOVE SPEED S80 portable power station. Learn how to use its 80,000mAh capacity, 130W output, digital display, USB-C ports, and solar charging capabilities for camping, laptops, and emergency backup.</p>
	<p>MOVESPEED GD10 Portable SSD User Manual for Apple Find My</p> <p>User manual for the MOVESPEED GD10 Portable Solid State Drive, detailing how to use it with Apple's Find My network for tracking, alerts, and lost mode.</p>

Documents - MOVE SPEED – WD10

no relevant documents