

Manuals+

[Q & A](#) | [Deep Search](#) | [Upload](#)

manuals.plus /

- › [Sony](#) /
- › [Sony BRAVIA KD-32W835 32-inch HD Ready Smart LED Google TV User Manual](#)

Sony KD-32W835

Sony BRAVIA KD-32W835 32-inch HD Ready Smart LED Google TV User Manual

INTRODUCTION

This user manual provides essential information for the safe and efficient operation of your Sony BRAVIA KD-32W835 32-inch HD Ready Smart LED Google TV. Please read this manual thoroughly before using the television and retain it for future reference. It covers setup, operation, maintenance, and troubleshooting to ensure you get the most out of your new television.



SAFETY INFORMATION

Always observe the following safety precautions to prevent fire, electric shock, or injury.

- **Power Source:** Connect the TV only to the specified power supply.
- **Ventilation:** Ensure adequate ventilation around the TV. Do not block ventilation openings.
- **Water and Moisture:** Do not expose the TV to rain or moisture. Do not place objects filled with liquids on the TV.
- **Cleaning:** Unplug the TV before cleaning. Use a soft, dry cloth. Avoid liquid cleaners.
- **Placement:** Place the TV on a stable surface or mount it securely according to instructions.
- **Servicing:** Do not attempt to service the TV yourself. Refer all servicing to qualified personnel.

WHAT'S IN THE BOX

Upon unpacking, verify that all the following items are included:

- 1 LED TV (Sony BRAVIA KD-32W835)
- 1 AC Power Adapter
- 1 AC Power Cord
- 1 Standard Remote Control
- 2 AAA Batteries (for remote control)

SETUP GUIDE

1. Unpacking and Placement

Carefully remove the TV and all accessories from the packaging. Choose a suitable location for your TV, considering viewing angles and ventilation. The TV supports both wall mount and table mount configurations.

Upscaling every pixel for exceptional clarity

X-Reality **PRO**



Image: Sony BRAVIA TV mounted on a wall, illustrating a common placement option.

2. Connecting Devices

Your Sony BRAVIA TV offers multiple connectivity options for various devices.

- **HDMI Ports:** Connect set-top boxes, Blu-ray players, or gaming consoles using the 3 available HDMI ports.
- **USB Ports:** Connect hard drives or other USB devices to the 2 USB ports for media playback.
- **Ethernet:** For a stable wired internet connection.
- **Wi-Fi:** For wireless internet connectivity.

BRAVIA



Image: Rear view of the TV, highlighting the location of various input ports.

Entertainment you love. With a little help from Google.

Get 700,000+ movies and TV episodes,
live TV, and more, available across 10,000+ apps.



Image: Close-up of the side panel, detailing HDMI and USB port access.

3. Initial Power On and Setup

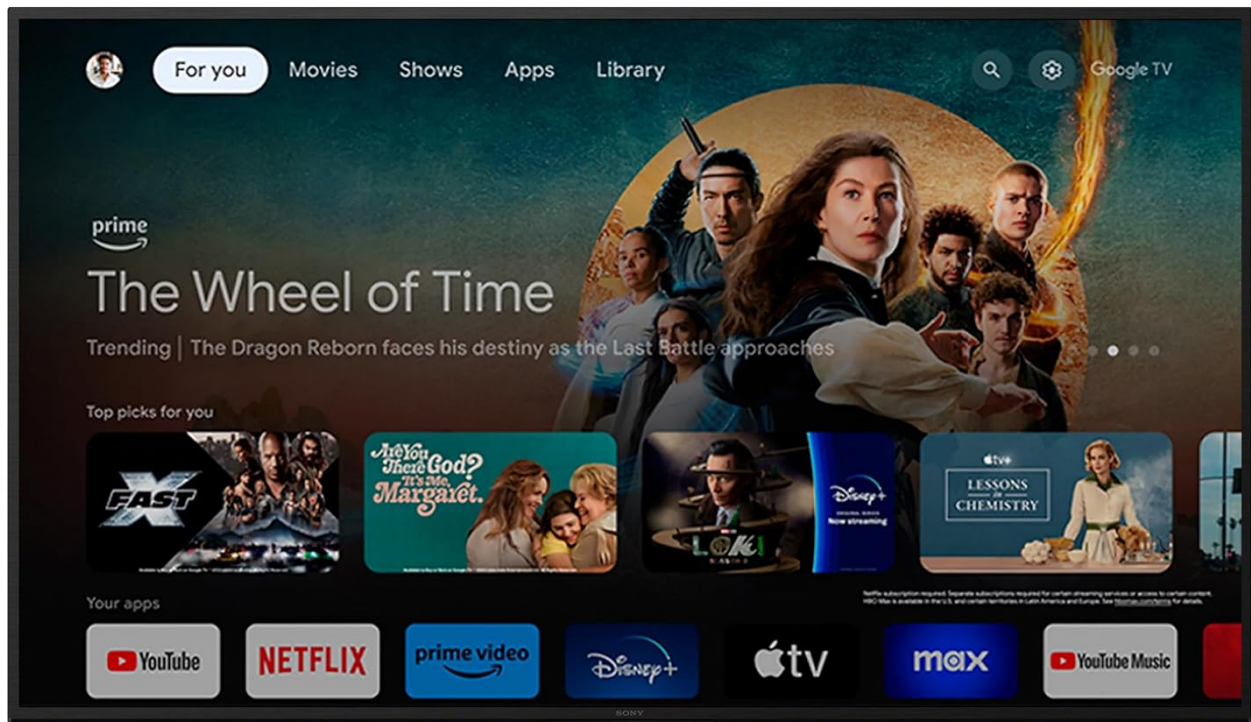
After connecting the power cord, press the power button on the TV or remote control. Follow the on-screen instructions to complete the initial setup, including language selection, network connection, and Google TV account setup.

OPERATING INSTRUCTIONS

1. Remote Control Functions

The included remote control provides access to all TV functions. Insert the two AAA batteries as indicated. Key features include:

- **Power Button:** Turns the TV on or off.
- **Google Assistant Button:** Activates voice commands.
- **Dedicated App Buttons:** Quick access to YouTube, Netflix, YouTube Music, and Prime Video.
- **Navigation Pad:** For menu navigation.



Google TV

10,000+ Apps

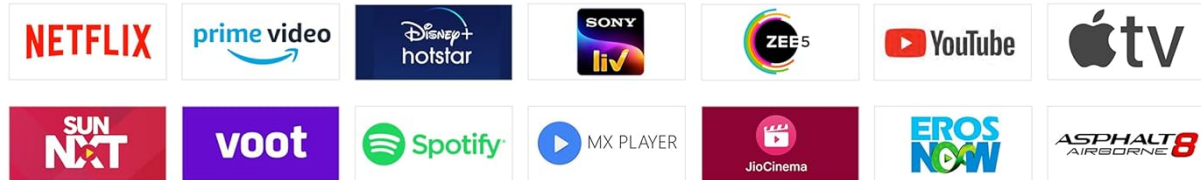


Image: Detailed view of the standard remote control, highlighting key function buttons.

2. Smart TV Features (Google TV)

Your TV runs on Google TV, offering a personalized entertainment experience.

- **Google TV Interface:** Access over 10,000 apps and 700,000+ movies and TV episodes.
- **Google Assistant:** Use voice commands to search for content, control smart home devices, and more.
- **Chromecast Built-in:** Stream content directly from your smartphone or tablet.
- **Apple Airplay & Homekit:** Seamlessly integrate with Apple devices for streaming and control.
- **Watchlist:** Keep track of movies and shows you want to watch.

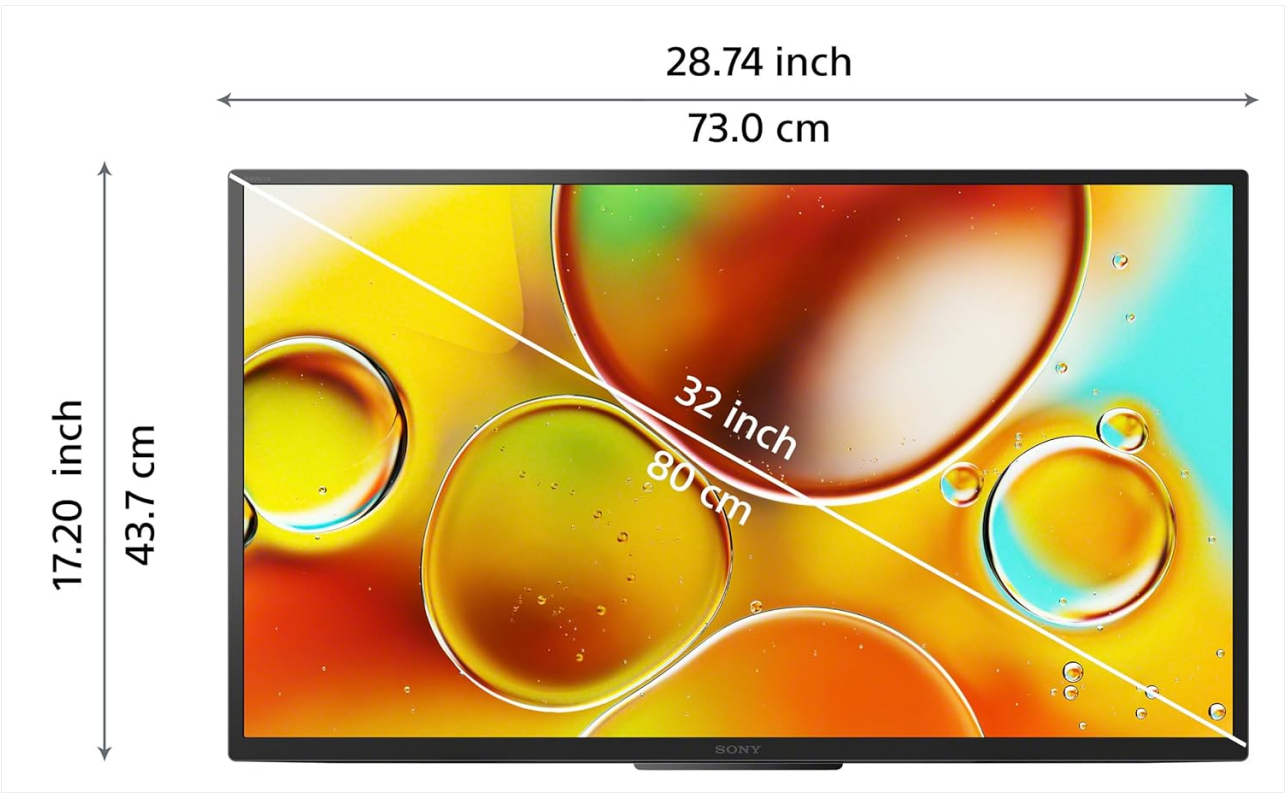


Image: The Google TV home screen, showing recommended content and streaming apps.



Image: A visual representation of the extensive app library available on Google TV.

Powerful Sound Experience

Dolby Audio



Image: Demonstrating the voice search functionality using the Google Assistant.

Smooth and clear motion, allowing sports and movies to be seen with lifelike clarity



Conventional TVs

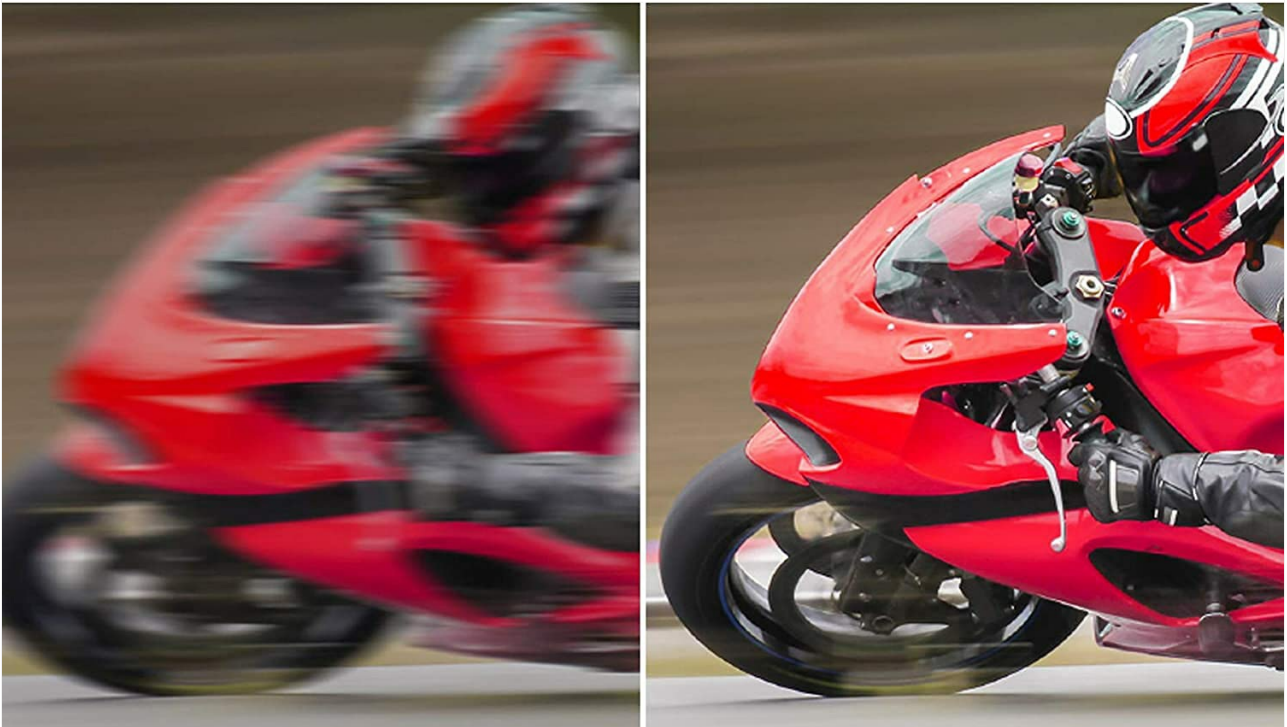


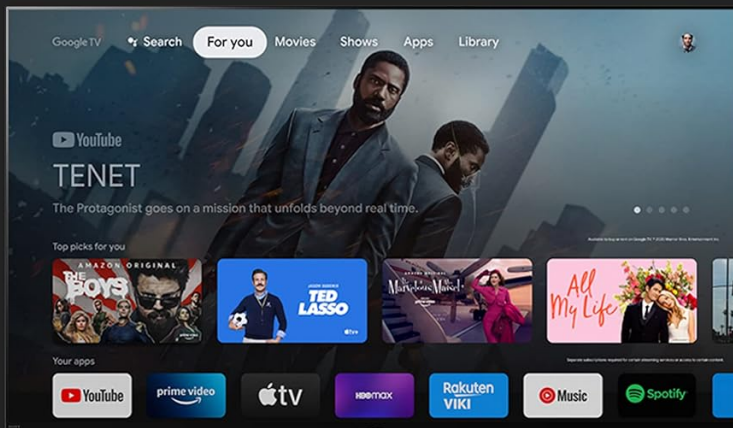
Image: Illustrating content sharing from mobile devices to the TV using Apple Airplay and Chromecast built-in.

3. Picture and Sound Enhancements

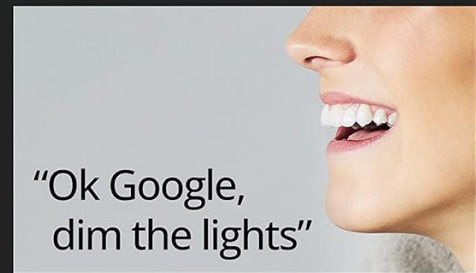
The BRAVIA KD-32W835 incorporates several technologies to optimize your viewing and listening experience.

- **HDR10/HLG:** Experience enhanced contrast and a wider range of colors with High Dynamic Range content.
- **X-Reality PRO:** Upscales every pixel for exceptional clarity, analyzing and refining images for improved detail.
- **Live Color:** Delivers vivid and natural color reproduction.
- **MotionFlow XR 200:** Ensures smooth and clear motion, reducing blur in fast-paced scenes.
- **Dolby Audio:** Provides immersive, high-quality sound.
- **Open Baffle Speaker:** Designed to deliver clear, punchy bass and a powerful sound experience with 20 Watts output.

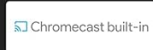
A faster way to the entertainment you love



*Home screen design and features vary by country.



"Ok Google, dim the lights"



Google TV is the name of this device's software experience and a trademark of Google LLC. Google is a trademark of Google LLC.

Image: Visual representation of HDR technology enhancing movie and game details.

Supersize your smartphone

Easily stream your favorite videos, photos and more from your iOS or Android devices on your TV.

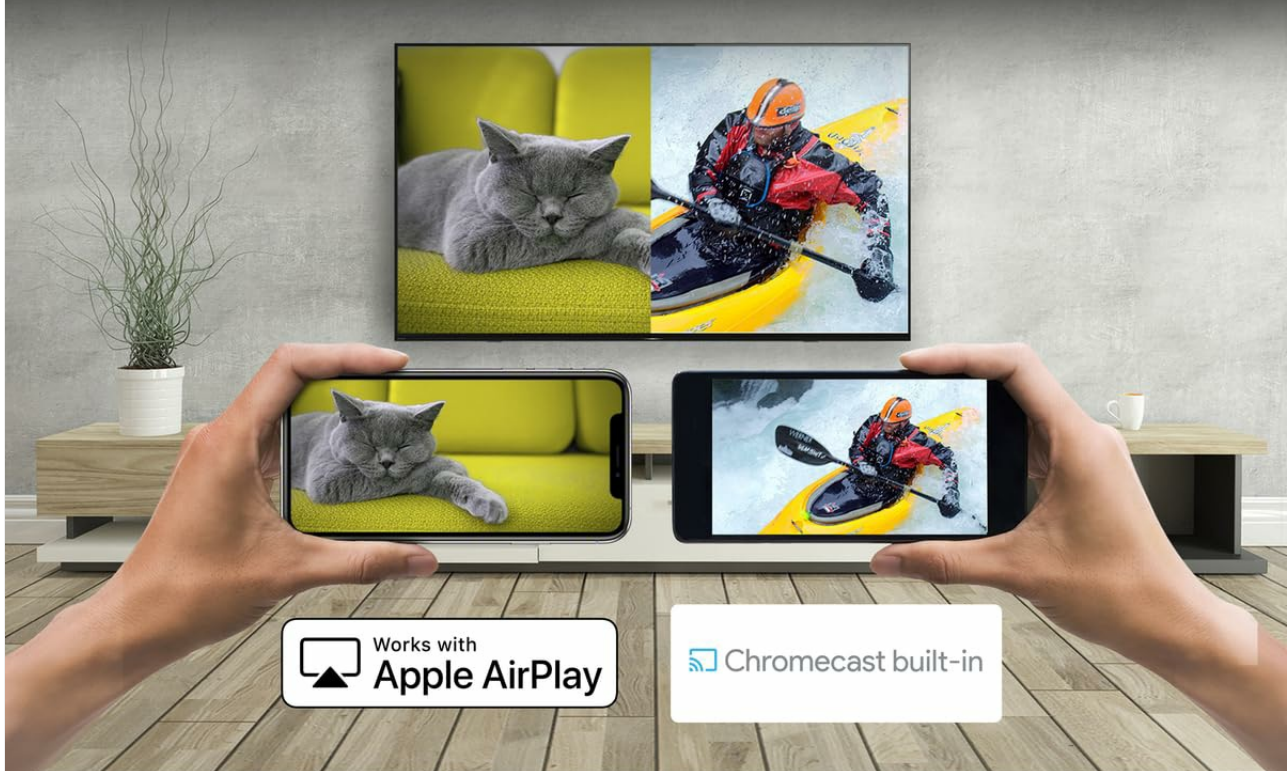


Image: Example of X-Reality PRO enhancing image clarity and detail.

Control your TV and find content quickly and simply by voice remote.

Voice Search



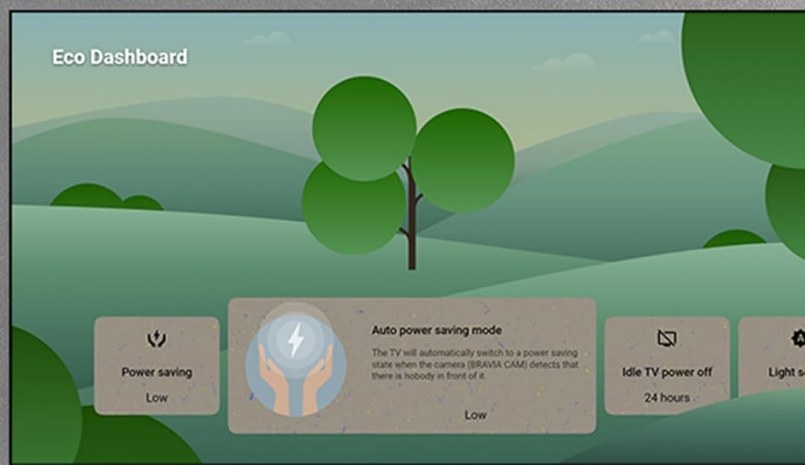
Image: Comparison showing reduced motion blur with MotionFlow XR technology.



Image: Illustration of the Open Baffle Speaker design for enhanced bass.

All your eco in one place

With Eco Dashboard, easy to change your energy-efficiency settings individually or all in one go.



Eco Dashboard

Image: Visual representation of the powerful sound experience delivered by Dolby Audio.

4. Eco Dashboard

The Eco Dashboard allows you to manage and optimize the TV's energy consumption settings. You can adjust power saving modes and other eco-friendly features to reduce energy usage.



Image: The Eco Dashboard interface, showing options for energy efficiency settings.

MAINTENANCE

Proper maintenance ensures the longevity and optimal performance of your TV.

- **Cleaning the Screen:** Gently wipe the screen with a soft, lint-free cloth. For stubborn marks, slightly dampen the cloth with water. Avoid harsh chemicals.
- **Cleaning the TV Body:** Use a soft, dry cloth to wipe the TV's exterior.
- **Software Updates:** Ensure your TV's software is up-to-date for the best performance and latest features. The TV will typically notify you of available updates.

TROUBLESHOOTING

If you encounter issues with your TV, refer to the following common troubleshooting steps:

| Problem | Possible Solution |
|---|--|
| No Power | Check if the power cord is securely connected to both the TV and the power outlet. Ensure the outlet is functional. |
| No Picture, but Sound is Present | Verify the correct input source is selected. Check cable connections (HDMI, AV). Try restarting the TV. |
| No Sound, but Picture is Present | Check the volume level and mute settings. Ensure external audio devices are correctly connected and powered on. |
| Network Connection Issues | Restart your router and modem. Reconnect to the Wi-Fi network or check the Ethernet cable connection. Verify network settings on the TV. |

| Problem | Possible Solution |
|-------------------------------|--|
| Remote Control Not Responding | Replace the AAA batteries. Ensure there are no obstructions between the remote and the TV's IR sensor. |

For more detailed troubleshooting or persistent issues, please refer to the Sony support website or contact customer service.

SPECIFICATIONS

| Feature | Detail |
|-----------------------------|---|
| Brand | Sony |
| Model | KD-32W835 |
| Screen Size | 32 Inches (80 cm) |
| Display Technology | LED |
| Resolution | HD Ready (1366 x 768) |
| Refresh Rate | 60 Hz |
| Operating System | Google TV |
| Connectivity | 3 HDMI, 2 USB, Ethernet, Wi-Fi, Bluetooth |
| Sound Output | 20 Watts (Open Baffle Speaker, Dolby Audio) |
| Special Features | Google Assistant, Chromecast Built-in, Apple Airplay, Apple Homekit, Alexa, X-Reality PRO, MotionFlow XR 200, HDR10/HLG, Live Color |
| Product Dimensions (LxWxH) | 73 x 7.5 x 43.7 cm |
| Item Weight | 4.8 kg |
| Power Consumption (On-mode) | 59 Watts |
| Batteries Required (Remote) | 2 AAA (Included) |

Delivering the excitement of movies and games in vividly detailed HDR

HDR

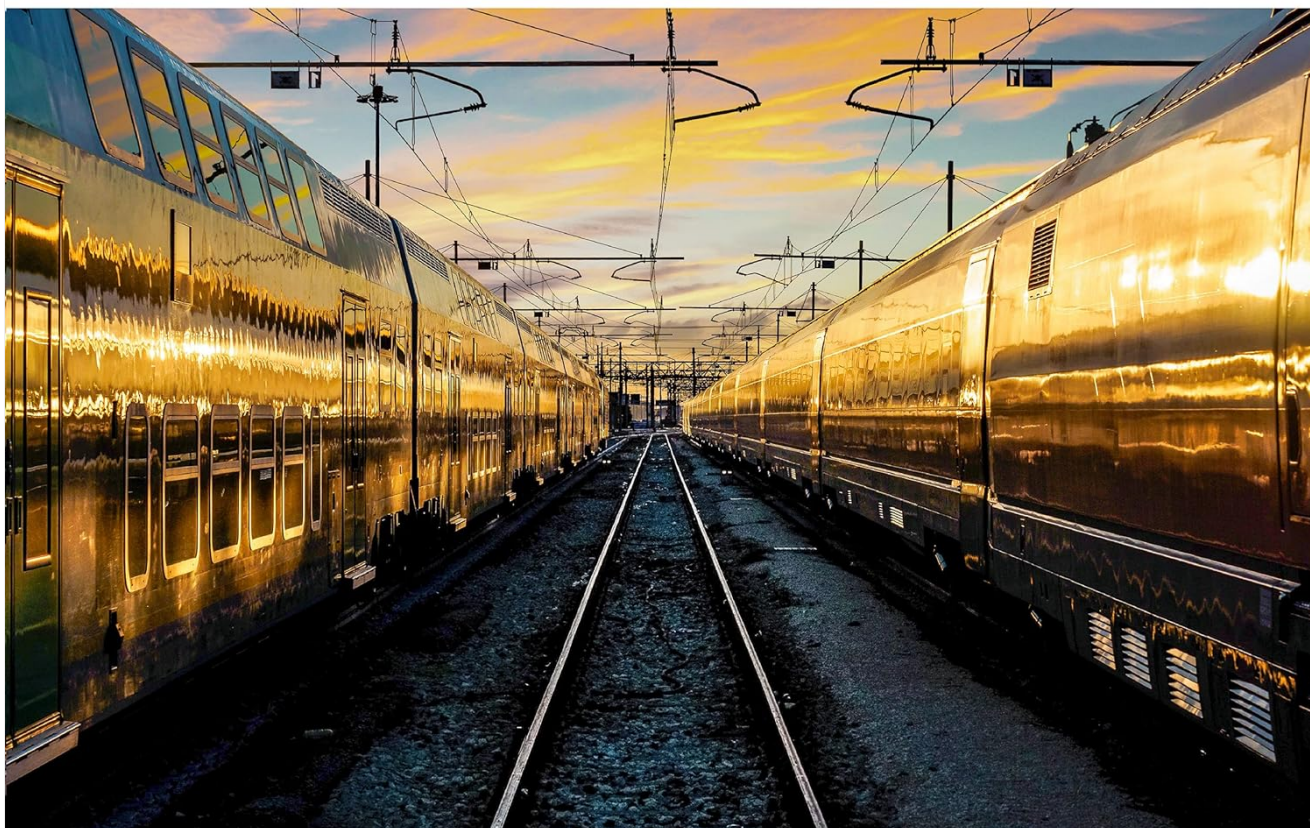


Image: Dimensional diagram of the Sony BRAVIA KD-32W835 TV.

WARRANTY AND SUPPORT

Your Sony BRAVIA KD-32W835 TV comes with a comprehensive warranty and dedicated customer support.

- **Warranty Information:** A **2-year comprehensive warranty** is provided by the brand from the date of purchase, covering the product and remote for technical issues.
- **Availing Warranty:** The brand warranty can be availed using your purchase invoice.
- **Customer Care:** For assistance, you can contact Sony India Private Limited Customer Care at **080 6500 6500** or email Sonyindia.care@ap.sony.com.
- **Online Resources:** Visit sony.co.in for additional product information and support.

**Boost sound with clear,
punchy bass**

**Open Baffle
Speaker**



Image: Illustration of professional installation and feature demonstration service provided by Sony.