

[Manuals.plus](#) /

› [SEAFRONT](#) /

› SEAFRONT CY306 GSM 3G 4G Remote Gate Opener Access Controller User Manual

SEAFRONT CY306

SEAFRONT CY306 GSM 3G 4G Remote Gate Opener Access Controller User Manual

Model: CY306

1. INTRODUCTION

The SEAFRONT CY306 is a versatile GSM 3G 4G remote access controller designed for managing gates, garage doors, and other access points. It allows for remote operation via mobile phone calls, SMS, or a dedicated application, offering secure and convenient control from any location. This manual provides detailed instructions for installation, operation, and maintenance of your CY306 controller.

2. PACKAGE CONTENTS

Please verify that all items listed below are included in your package:

- 1 x CY306 Remote Gate Opener Controller
- 3 x Mounting Bases
- 1 x Antenna



Image 2.1: Contents of the SEAFRONT CY306 package, showing the main controller board, the external antenna, and three small white mounting bases.

3. SPECIFICATIONS

Feature	Specification
Model	CY306
Material	ABS
Rated Voltage	AC/DC 9V-36V
Operating Temperature	-10°C to 60°C
Storage Temperature	-20°C to 60°C
Relative Humidity	10-90% (non-condensing)
Operating Frequency	Global GSM, 3G, 4G Frequencies
Output Relay Voltage	5A 250VAC, 7A 125VAC, 20A 14V, 20A 5V

Feature	Specification
Relay Port	1-way output
Dimensions (L x W x H)	10 x 7 x 4 cm
Weight	55 grams

4. PRODUCT OVERVIEW

The CY306 controller features a compact design with an ABS casing, making it suitable for industrial control applications. It includes a SIM card slot for network connectivity and terminal blocks for power and relay connections.

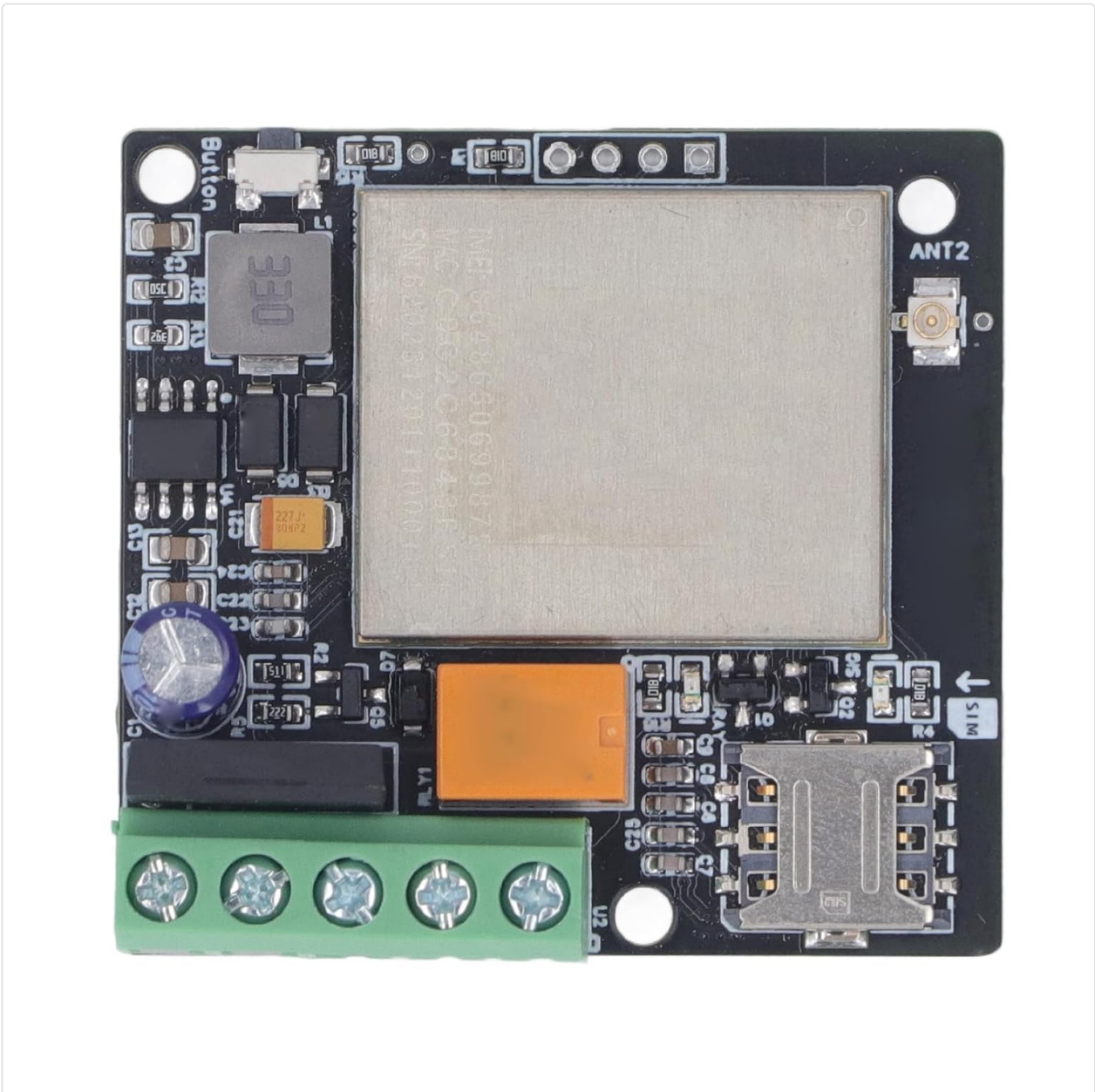


Image 4.1: Detailed view of the CY306 controller board, highlighting the SIM card slot (labeled 'SIM'), antenna connector (labeled 'ANT2'), and the green terminal block for wiring connections.

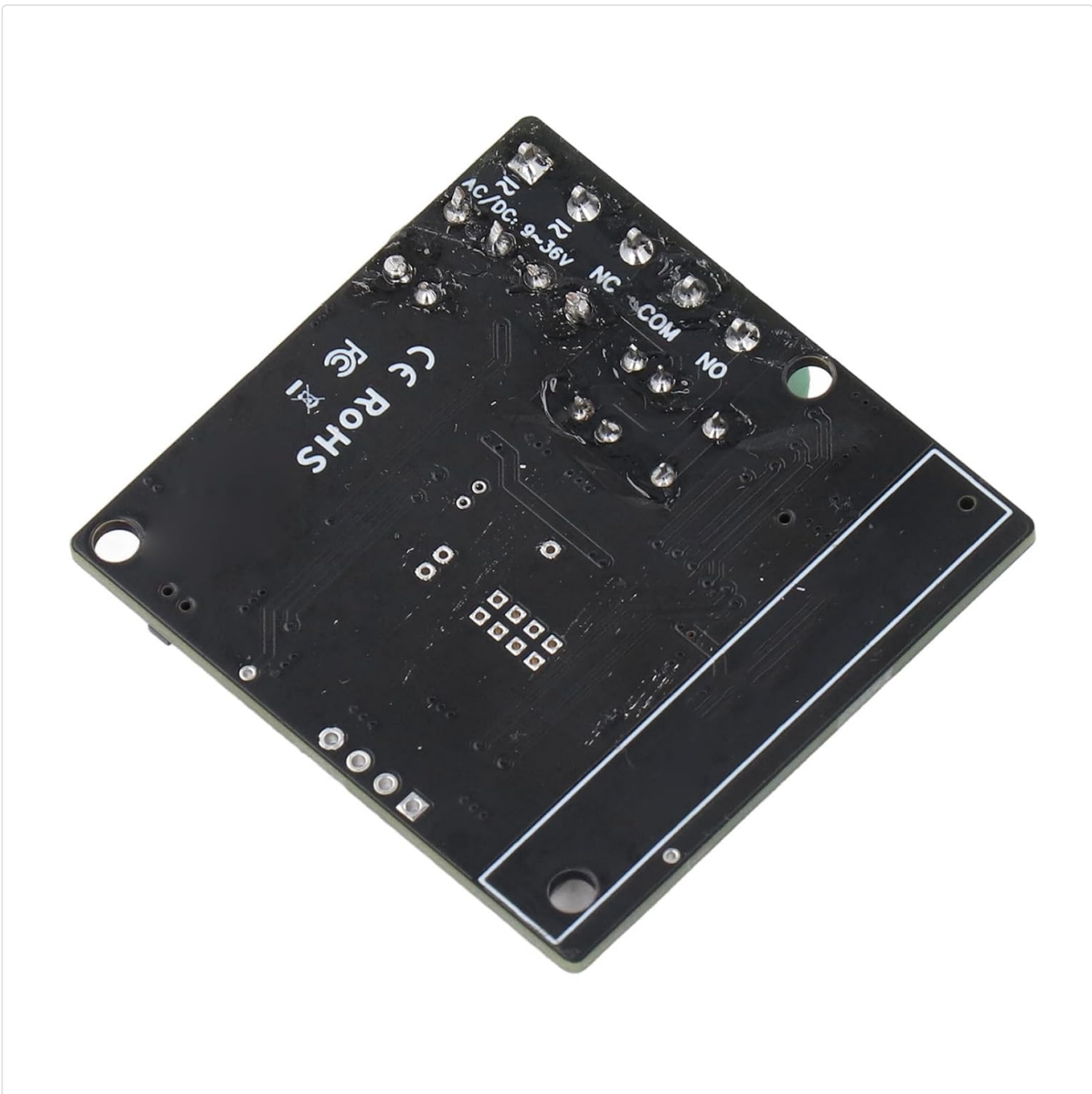


Image 4.2: The underside of the CY306 controller board, displaying various electronic components and regulatory compliance markings such as CE and RoHS.

5. INSTALLATION AND SETUP

Follow these steps to properly install and set up your CY306 controller:

1. **Prepare the Device:** Unpack the CY306 controller, antenna, and mounting bases.
2. **Insert SIM Card:** Locate the SIM card slot on the controller board (refer to Image 4.1). Insert a valid GSM, 3G, or 4G SIM card into the slot. Ensure the SIM card is activated and has sufficient credit for calls and SMS.
3. **Connect Antenna:** Connect the provided antenna to the 'ANT2' connector on the controller board. Ensure a secure connection for optimal signal reception.

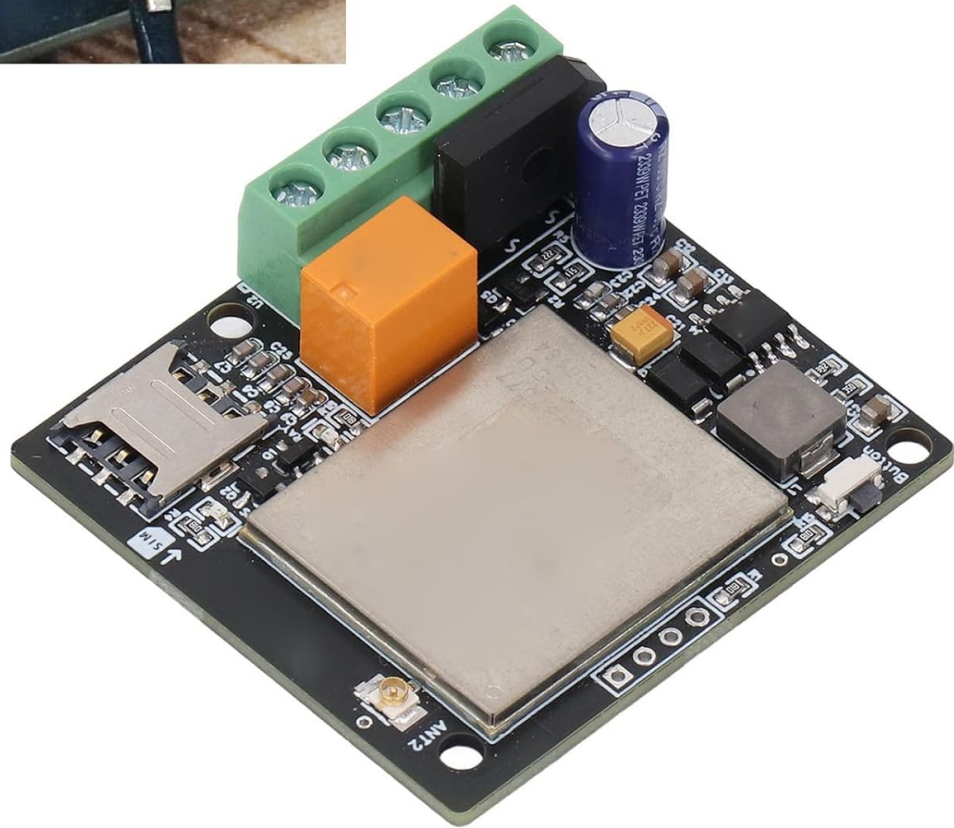


Image 5.1: A close-up view demonstrating the proper connection of the external antenna to the 'ANT2' port on the CY306 controller board.

4. **Wiring Connections:** Connect the power supply (AC/DC 9V-36V) and the device to be controlled (e.g., gate motor, garage door opener) to the corresponding terminals on the green terminal block. Refer to the wiring diagram specific to your application. The relay output provides a 1-way switch for control.
5. **Mounting:** Use the provided mounting bases to secure the controller in a suitable location. The device supports wall-mounted installation. Ensure the location provides good cellular signal and is protected from environmental elements.
6. **Power On:** Once all connections are secure, apply power to the controller. The device will initialize and connect to the cellular network.

6. OPERATING INSTRUCTIONS

The CY306 controller offers multiple methods for remote operation:

6.1. Call Control

To operate the device via a phone call:

- Call the phone number of the SIM card inserted in the CY306 controller from an authorized mobile number.
- The controller will recognize the authorized number and activate its relay output, which will open or close the connected device (e.g., gate, garage door).
- The call will be automatically rejected after activation, incurring no call charges.

6.2. SMS Control

Specific SMS commands can be sent to the controller's phone number to perform actions or configure settings. Refer to the detailed command list in the full product documentation for specific SMS commands (e.g., adding/removing users, checking status).

6.3. Mobile Application Control

The CY306 supports control via the Callny Control application. This application allows for:

- Adding up to 1001 authorized users.
- Querying user lists.
- Remote control of the connected device with a simple interface.
- Setting relay closing times from 0 to 9999 seconds.
- Remote restart and reset functions.

Download the Callny Control app from your mobile device's app store and follow the in-app instructions to pair it with your CY306 controller.



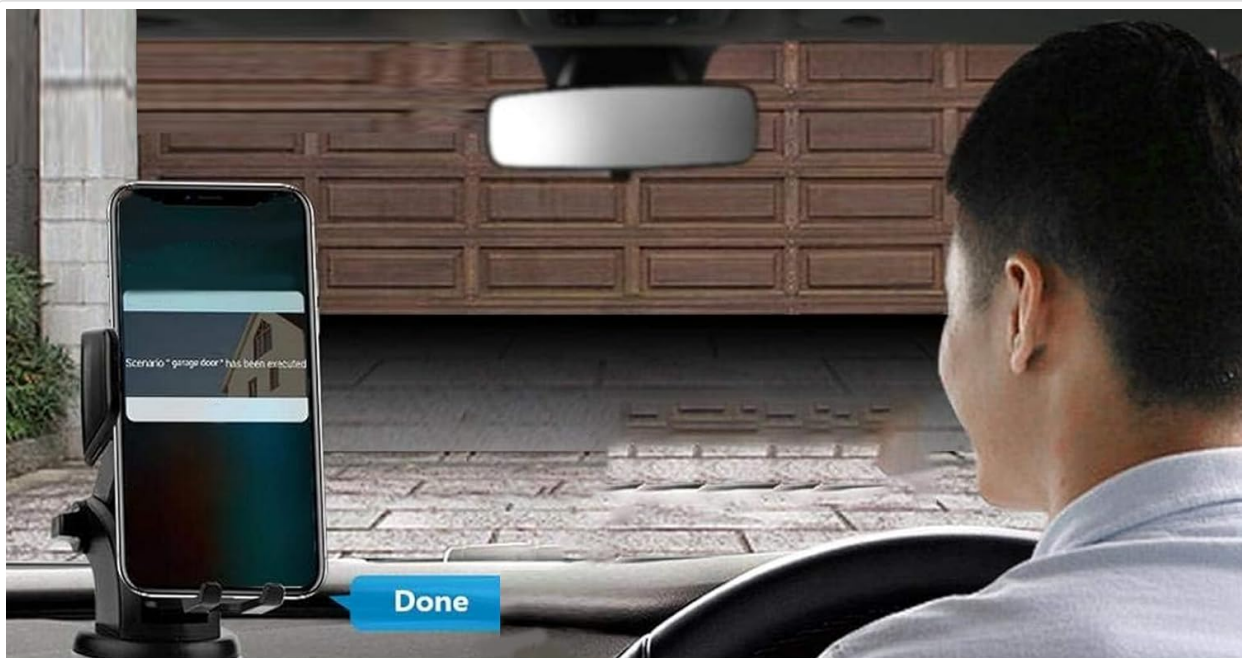
1 Way Output 0-9999s Relay Delay Closing Time

Image 6.1: Illustration of the mobile application interface used to remotely open a garage door, with the CY306 controller visible in the foreground.

7. APPLICATIONS

The SEAFRONT CY306 controller is suitable for a wide range of access control applications, including but not limited to:

- Residential and commercial gates
- Garage doors
- Parking barriers and systems
- Elevators
- Rolling shutters and blinds
- Industrial control for machines and equipment
- Remote control for electrical system distribution and traffic controllers



Suitable for gate, garage, parking lot, warehouse, electrical system, etc

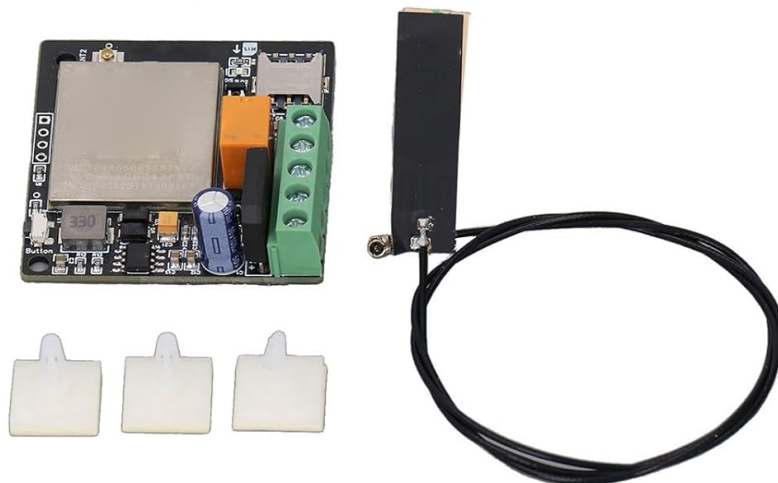


Image 7.1: A common application scenario showing a user operating an access point from inside a vehicle using the mobile application, demonstrating the convenience of the CY306 controller.

8. MAINTENANCE

To ensure optimal performance and longevity of your CY306 controller:

- Keep the device clean and free from dust and moisture.
- Ensure the antenna is securely connected and not obstructed.
- Regularly check power connections for any signs of wear or damage.
- Periodically verify the SIM card's status and credit balance to ensure continuous operation.

9. TROUBLESHOOTING

If you encounter issues with your CY306 controller, consider the following:

- **No Response to Calls/SMS:**
 - Check if the SIM card is properly inserted and activated.
 - Ensure the SIM card has sufficient credit and is not expired.

- Verify cellular network coverage at the device's location.
- Confirm that your mobile number is authorized in the controller's user list.
- **Device Not Powering On:**
 - Check the power supply connection and ensure it meets the 9V-36V AC/DC requirement.
 - Inspect the power cable for any damage.
- **Intermittent Operation:**
 - Poor cellular signal can cause intermittent operation. Try relocating the antenna or the controller to an area with better reception.
 - Ensure the antenna connection is secure.
- **Relay Not Activating:**
 - Verify the wiring to the connected device.
 - Check the relay settings via the app or SMS commands to ensure the closing time is correctly configured.

If problems persist, consult the full product documentation or contact customer support.

10. SAFETY INFORMATION

- Always disconnect power before performing any wiring or maintenance.
- Ensure all wiring is done by a qualified professional if you are unsure.
- Do not expose the device to extreme temperatures, direct sunlight, or water.
- Keep the device out of reach of children.
- Use only the specified power supply voltage (AC/DC 9V-36V).

11. WARRANTY AND SUPPORT

For warranty information and technical support, please refer to the documentation provided at the time of purchase or contact your retailer. The manufacturer is SEAFRONT.