

[Manuals.plus](#) /

> [KISS](#) /

> KISS Ultra-Cut Stainless Steel Blade Cordless Clipper Instruction Manual

KISS PC01

KISS Ultra-Cut Stainless Steel Blade Cordless Clipper Instruction Manual

Brand: KISS | Model: PC01

INTRODUCTION

Thank you for choosing the KISS Ultra-Cut Stainless Steel Blade Cordless Clipper. This manual provides essential information for the safe and effective use, maintenance, and care of your new grooming device. Please read all instructions carefully before first use and retain for future reference.

Key Features

- **Effortless Precision:** High-quality stainless steel gapless blade for precise cuts.
- **Powerful Performance:** Rechargeable high-torque, high-speed motor suitable for all hair types.
- **Tailored Styling:** Adjustable taper lever for versatile grooming.
- **Intuitive Control:** Easy-to-read LCD display for battery life, USB charging, and up to 3 hours runtime.
- **Worldwide Dual Voltage:** Compatible with 110V-240V for global use.

PACKAGE CONTENTS

Your KISS Ultra-Cut Cordless Clipper kit includes the following items:

- KISS Ultra-Cut Stainless Steel Blade Cordless Clipper
- 12 Blade Guards (various sizes)
- Blade Cover
- Cleaning Brush
- Lubricating Oil
- Scissors
- Cutting Comb
- USB Charging Cable
- Storage Pouch



Image: The complete KISS Ultra-Cut Cordless Clipper grooming kit, including the clipper, various blade guards, cleaning tools, and accessories.

PRODUCT OVERVIEW

Familiarize yourself with the main components of your clipper:



Image: The KISS Ultra-Cut Cordless Clipper highlighting its key features such as the high-quality stainless steel blade, precision gapless blade, LCD display panel, quick charging port, and worldwide dual voltage compatibility.

12PCS OF BLADE GUIDE



1.5 MM



3 MM



4.5 MM



6 MM



10 MM



13 MM



16 MM



19 MM



22 MM



25 MM



RIGHT EAR
TAPER



LEFT EAR
TAPER



Image: A detailed view of the 12 included blade guides, ranging from 1.5mm to 25mm, along with right and left ear taper guides, demonstrating the versatility for different hair lengths and styles.

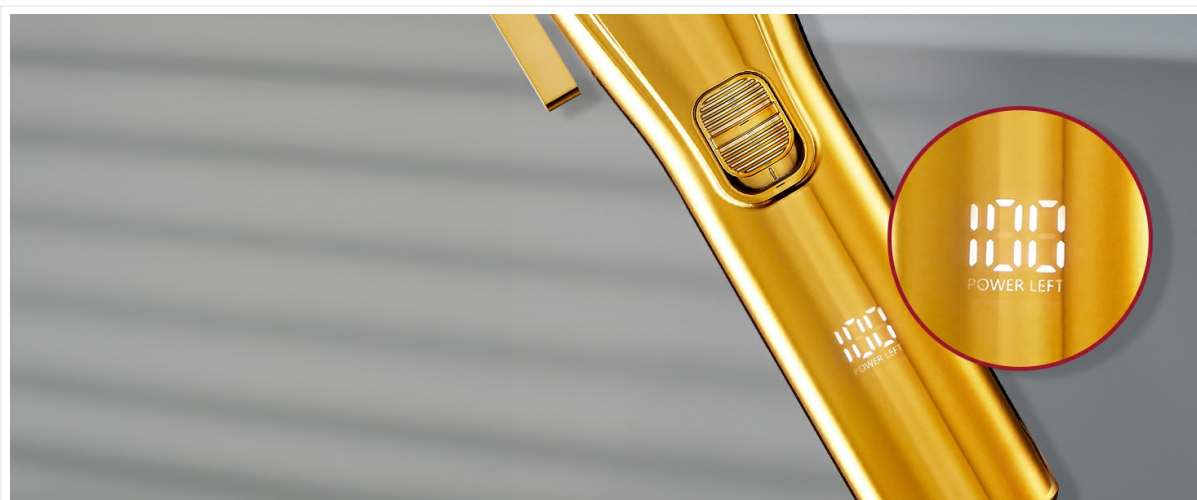


Image: A close-up of the USB charging port located at the base of the clipper, indicating its rechargeable cordless design.

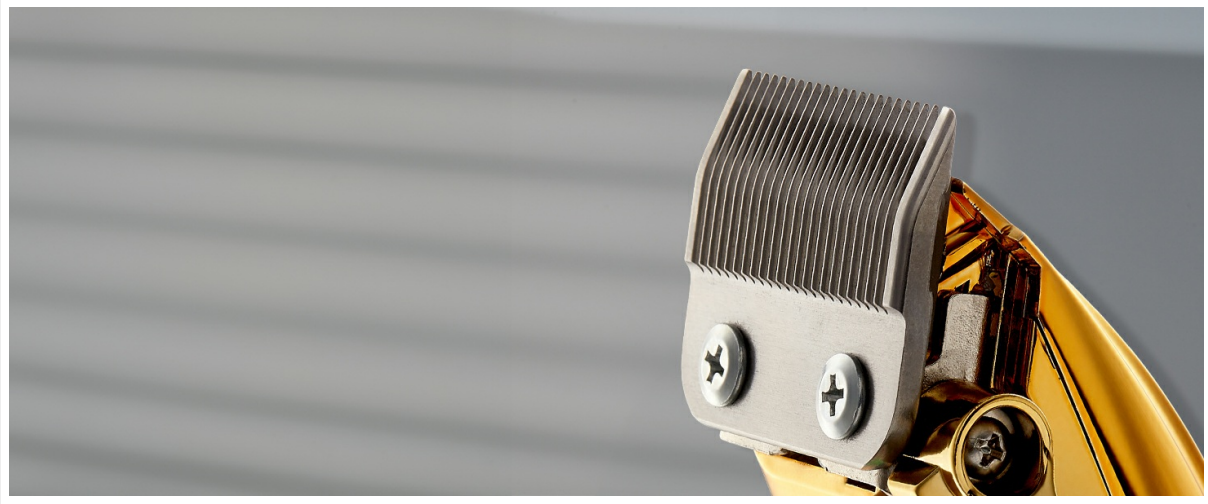


Image: The LCD display panel on the clipper, clearly showing the remaining battery percentage, ensuring you are aware of the power level during use.

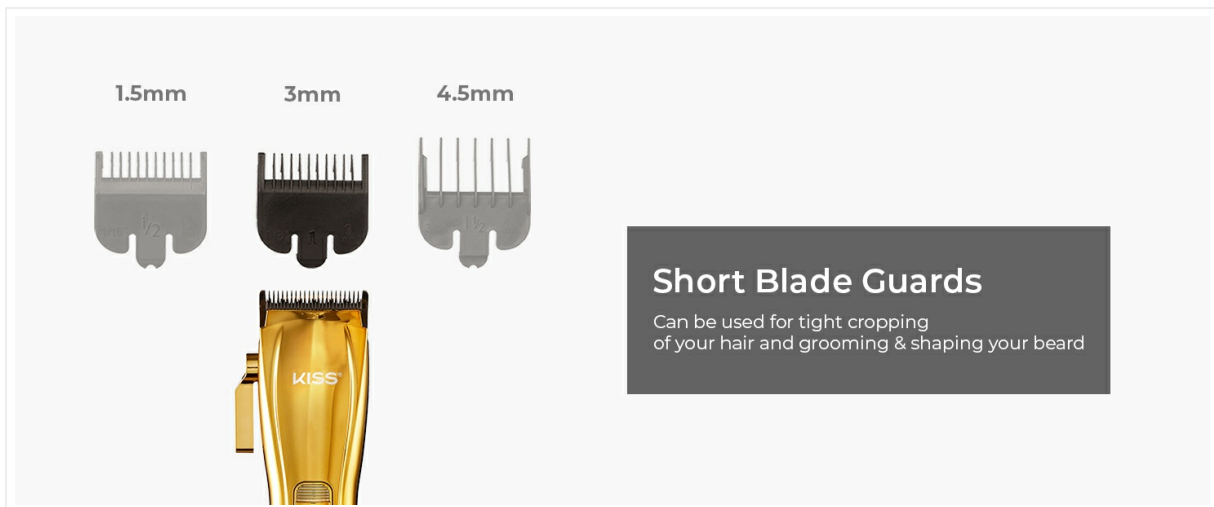


Image: A close-up of the high-quality stainless steel blade, designed for precise and efficient hair cutting.

INITIAL SETUP

Charging the Clipper

1. Ensure the clipper is turned off before charging.
2. Connect the USB charging cable to the charging port at the bottom of the clipper.
3. Plug the other end of the USB cable into a compatible USB power adapter (not included) or a USB port.
4. The LCD display will show the charging progress. A full charge provides up to 3 hours of runtime.

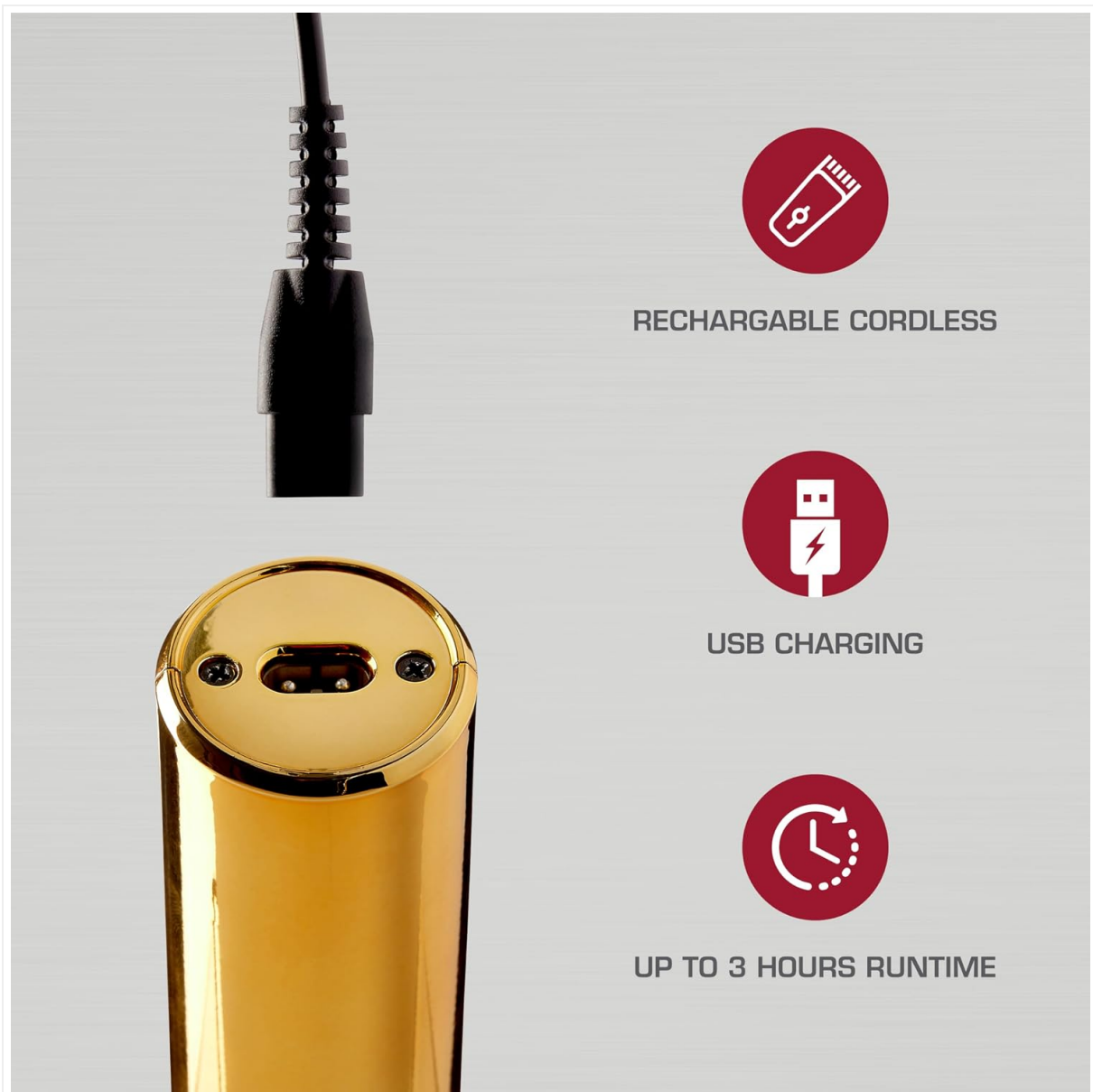


Image: The cordless clipper connected to a USB charging cable, illustrating the charging process.

Attaching and Detaching Blade Guards

1. Select the desired blade guard size for your haircut.
2. Align the blade guard with the clipper blade and push it firmly until it clicks into place.
3. To remove, gently pull the guard away from the blade.

OPERATING INSTRUCTIONS

General Usage

1. Ensure the clipper is fully charged and the desired blade guard is attached.
2. Press the power button to turn on the clipper.
3. Use the adjustable taper lever on the side of the clipper to fine-tune the cutting length between guard sizes.
4. Always start with a longer guard if you are unsure of the desired length.
5. Move the clipper against the direction of hair growth for an even cut.
6. For detailing and edging, remove the blade guard and use the precision blade directly.

Your browser does not support the video tag.

Video: An official product video demonstrating the KISS Cordless Clipper and Trimmer in use, showcasing its versatility for various

hair cutting and trimming tasks.

Your browser does not support the video tag.

Video: An official product video highlighting the precision and ease of use of the KISS Ultra-Cut Precision Stainless Steel Blade Cordless Clipper for detailed grooming.

CARE AND MAINTENANCE

Cleaning the Blades

1. After each use, turn off the clipper and remove the blade guard.
2. Use the provided cleaning brush to remove any loose hair from the blades and the clipper body.
3. The blades are washable. For a deeper clean, you may rinse the blade head under running water. Ensure the clipper body remains dry.
4. Allow the blade to air dry completely before reattaching or storing.

Oiling the Blades

1. Regularly apply a few drops of the provided lubricating oil to the blades.
2. Turn on the clipper for a few seconds to allow the oil to distribute evenly across the blades.
3. Wipe off any excess oil with a soft cloth.
4. Oiling helps maintain blade sharpness and prolongs the life of your clipper.

Storage

- Store the clipper in a cool, dry place, away from direct sunlight and moisture.
- Use the provided storage pouch to protect the clipper and its accessories.

Your browser does not support the video tag.

Video: An official product video demonstrating the features of the Red by Kiss Precision Blade Cordless Trimmer, including its washable blade for easy cleaning.

TROUBLESHOOTING

Problem	Possible Cause	Solution
Clipper does not turn on.	Low battery or not charged.	Charge the clipper fully using the provided USB cable. Check the LCD display for battery percentage.
Poor cutting performance or pulling hair.	Blades are dull, dirty, or not oiled.	Clean the blades thoroughly with the brush and rinse if necessary. Apply lubricating oil to the blades. If blades are dull, consider professional sharpening or replacement.
Clipper gets hot during use.	Extended continuous use or dirty/unoiled blades.	Allow the clipper to cool down. Clean and oil the blades. Avoid prolonged continuous operation.

TECHNICAL SPECIFICATIONS

Feature	Detail
---------	--------

Feature	Detail
Product Dimensions	2.75 x 5.56 x 9.45 inches
Item Model Number	PC01
UPC	731509922561
Manufacturer	Kiss Products, Inc.
Recommended Uses	Professional, Salon, Trimming
Color	Gold
Item Weight	1.2 Pounds
Brand	KISS
Power Source	Battery Powered
GTIN	731509922561

WARRANTY & SUPPORT

This product is covered by the manufacturer's standard warranty. For specific warranty details, claims, or technical support, please refer to the documentation included in your product packaging or contact Kiss Products, Inc. directly. Keep your purchase receipt as proof of purchase.