

Manuals+

[Q & A](#) | [Deep Search](#) | [Upload](#)

manuals.plus /

- › [Runidur](#) /
- › [Runidur Smoke and Carbon Monoxide Detector User Manual](#)

Runidur CS12

Runidur Smoke and Carbon Monoxide Detector User Manual

Model: CS12 | Brand: Runidur

INTRODUCTION

Thank you for choosing the Runidur Smoke and Carbon Monoxide Detector. This device is designed to provide reliable and continuous monitoring for both smoke and carbon monoxide (CO) hazards in your home. Featuring a 10-year sealed battery and a compact design, it offers long-term protection and peace of mind. This manual provides essential information for proper installation, operation, and maintenance to ensure optimal performance and safety.



Image: Six Runidur Smoke and Carbon Monoxide Detectors, illustrating the product packaging and included 10-year battery.

SETUP AND INSTALLATION

Package Contents

Before beginning installation, please verify that all components are present:

- Runidur Smoke and Carbon Monoxide Detector Unit
- Mounting Bracket
- Mounting Screws and Wall Plugs
- Integrated 3V CR123A Lithium Battery (sealed for 10 years)
- User Manual (this document)

Choosing a Location

For optimal protection, install detectors in all sleeping areas and on every level of your home, including the basement. For smoke detection, place detectors on the ceiling or high on a wall, at least 4 inches (10 cm) from any wall. For carbon monoxide detection, place detectors at knee level or higher, but not directly above fuel-burning

appliances. Avoid placing detectors in kitchens, bathrooms, garages, or near windows, doors, or air vents, as these locations can lead to false alarms or reduced effectiveness.

Installation Steps

The Runidur detector is designed for easy installation, typically completed within 5 minutes.

1. Select an appropriate mounting location on a wall or ceiling.
2. Use the mounting bracket as a template to mark the positions for drilling two holes.
3. Drill the marked holes and insert the wall plugs.
4. Attach the mounting bracket to the wall or ceiling using the provided screws.
5. Align the detector unit with the mounting bracket and twist clockwise to secure it in place. Ensure the unit clicks firmly into position.



Image: Detailed diagram illustrating the simple installation process of the detector, showing the mounting plate, screws, and how the unit attaches to the ceiling.



Image: Visual guide demonstrating the drilling and mounting of the detector's base plate.

OPERATING INSTRUCTIONS

Initial Power-Up

The Runidur detector comes with a sealed 10-year lithium battery. Once the unit is properly mounted, it will automatically activate. There is no user-replaceable battery.



Image: An internal view of the detector highlighting the sealed CR123A lithium battery, which provides 10 years of power.

Testing the Detector

It is crucial to test your detector weekly to ensure it is functioning correctly.

- Press and hold the large central button (Test/Mute button) on the detector.
- The alarm will sound a loud, pulsating signal (over 85 dB at 3 meters), and the LED indicator will flash.
- Release the button. The alarm should stop.

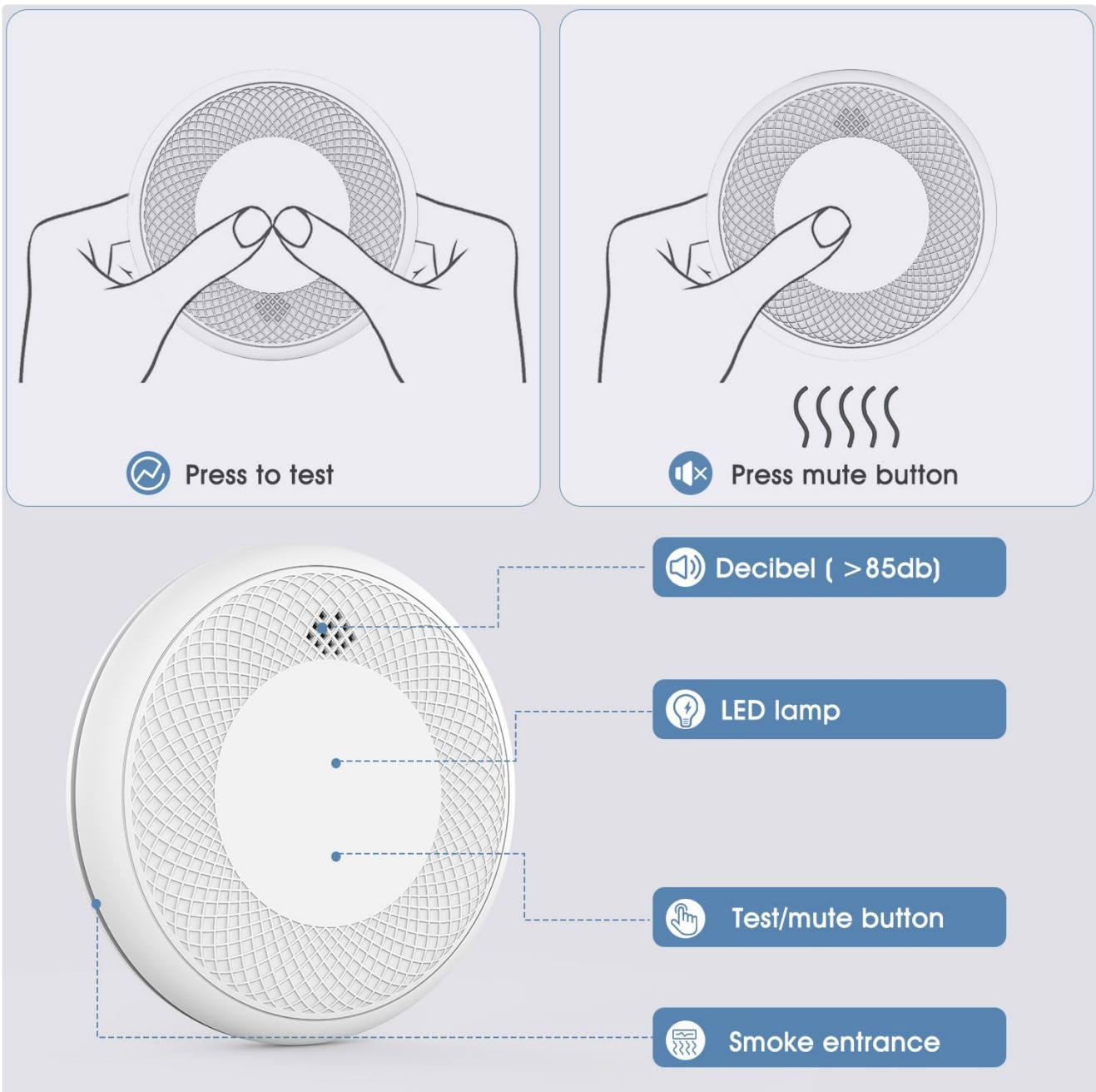


Image: Visual guide detailing the test and mute functions, along with key components like the LED lamp and smoke entrance.



Image: A close-up of a finger activating the test button on the detector.

Alarm Signals

The detector provides distinct alarm patterns for smoke and carbon monoxide.

- **Smoke Alarm:** A series of three loud beeps, pause, three loud beeps. This indicates the presence of smoke.

- **Carbon Monoxide (CO) Alarm:** A series of four loud beeps, pause, four loud beeps. This indicates a dangerous level of carbon monoxide.
- **Low Battery Warning:** A single chirp approximately every 30-60 seconds. This indicates the end of the detector's 10-year lifespan and requires replacement.

Lightweight smoke detector Product size



Image: An illustration of a multi-story home demonstrating the effective placement and dual detection capabilities of the 2-in-1 smoke and CO alarm.

2 IN1 CO & SMOKE Alarm Accurate detection and alarm



Image: A visual representation of the detector sounding an alarm in the presence of smoke, emphasizing its loud 85 dB alert at 3 meters.



Image: A graphic illustrating the detector's 360-degree carbon monoxide detection capability, showing CO particles being detected from all directions.

Mute Function

In case of a nuisance alarm (e.g., from cooking fumes), you can temporarily silence the alarm by pressing the

Test/Mute button. The alarm will silence for approximately 10 minutes before resetting. If the hazardous condition persists, the alarm will reactivate.

MAINTENANCE

Cleaning Your Detector

Dust and debris can accumulate on the detector and affect its performance. Clean your detector at least once a month.

- Gently vacuum the exterior of the detector using a soft brush attachment.
- Do not use cleaning solvents or detergents on the detector.
- Do not paint the detector.

Battery Information

The Runidur detector is equipped with a sealed 3V CR123A lithium battery designed to provide continuous power for 10 years. This battery is not user-replaceable. When the battery reaches the end of its life, the detector will emit a low battery chirp (a single chirp every 30-60 seconds). At this point, the entire unit must be replaced.

Lightweight smoke detector Back display



Image: The back of the detector displaying important product information, including the model number, battery type, and the recommended 10-year replacement period.

TROUBLESHOOTING

If your detector is not functioning as expected, refer to the following common issues and solutions:

Problem	Possible Cause	Solution
Detector chirps every 30-60 seconds.	End of unit's lifespan (10-year battery depleted).	Replace the entire detector unit. The battery is sealed and not replaceable.
Alarm sounds frequently without apparent smoke/CO.	Dust accumulation, steam from shower, cooking fumes, high humidity.	Clean the detector as per maintenance instructions. Relocate the detector if it's too close to kitchens or bathrooms. Use the mute function for temporary nuisance alarms.

Problem	Possible Cause	Solution
Detector does not sound during test.	Unit not properly activated or end of life.	Ensure the unit is twisted fully onto the mounting bracket. If it still doesn't respond, the unit may have reached its end of life and needs replacement.
Cannot open the unit.	The unit is designed with a sealed battery and is not intended for user opening or battery replacement.	Do not attempt to force open the unit. If the low battery chirp sounds, replace the entire detector.

SPECIFICATIONS

Feature	Detail
Brand	Runidur
Model Number	CS12
Power Source	Battery Powered (Sealed 3V CR123A Lithium Battery)
Product Dimensions	3.15"D x 1.25"W x 3.2"H
Item Weight	4.8 ounces
Alarm Volume	>85 dB at 3 meters
Sensor Type	Photoelectric (Smoke) & Electrochemical (CO)
Material	ABS
Battery Life	10 Years (Non-replaceable)

WARRANTY AND SUPPORT

Warranty Information

Specific warranty details for the Runidur Smoke and Carbon Monoxide Detector are typically provided with your purchase documentation or on the product packaging. Please refer to these resources for comprehensive warranty terms and conditions.

Customer Support

For any questions, technical assistance, or support regarding your Runidur detector, please contact Runidur customer service. Contact information can usually be found on the product packaging or the official Runidur website.

