

## Manuals+

[Q & A](#) | [Deep Search](#) | [Upload](#)

### Manuals.plus /

- › [Martha Stewart](#) /
- › Martha Stewart Whitney Accent Chair Instruction Manual

## Martha Stewart MT100-0176

# Martha Stewart Whitney Accent Chair Instruction Manual

Model: MT100-0176

## INTRODUCTION

This manual provides detailed instructions for the assembly, use, and maintenance of your Martha Stewart Whitney Accent Chair from the Bedford Collection. Please read this manual thoroughly before assembly and use to ensure proper function and longevity of your furniture.

## IMPORTANT SAFETY INFORMATION

**WARNING:** This chair requires assembly. Always follow the assembly instructions carefully to ensure safe and proper installation. Do not exceed the maximum weight recommendation of 300 lbs to prevent accidents and damage to the chair.

Keep all small parts and packaging materials away from children and pets to prevent choking hazards.

## PACKAGE CONTENTS

Verify that all components are present before beginning assembly:

- 1 x Whitney Accent Chair Frame
- 1 x Seat Cushion (Plush 6.75" Thick)
- 1 x Removable Backrest Cushion
- 4 x KD Legs (Knock-Down Legs)
- Assembly Hardware (bolts, washers, Allen wrench)

## SETUP AND ASSEMBLY

The Martha Stewart Whitney Accent Chair is designed for customer-friendly assembly. Only the legs require attachment.

1. Carefully remove all components from the packaging.
2. Place the chair frame upside down on a soft, clean surface to prevent scratching.
3. Attach each of the four KD legs to the designated corners of the chair frame using the provided hardware. Ensure all bolts are securely tightened.
4. Carefully turn the chair upright.
5. Place the seat cushion onto the chair frame.
6. Position the removable backrest cushion against the chair back.

**Assembly required:** Yes.

# CHAIR DIMENSIONS



Image: Chair Dimensions. This diagram illustrates the overall dimensions of the chair: 27"W x 29"D x 31"H, with seat dimensions of 23"W x 18.5"D x 18.5"H. The backrest is 20.5"W x 12.5"H, and the legs are 9.25"H. Maximum weight capacity is 300 lbs.

## OPERATING AND USAGE

The Whitney Accent Chair is designed for comfortable seating in various indoor settings.

- **Recommended Uses:** Ideal for indoor use in living rooms, bedrooms, or study rooms for reading, relaxing, or as an accent piece.
- **Weight Capacity:** Do not exceed the maximum weight recommendation of 300 pounds.
- **Placement:** Position the chair on a flat, stable surface. Avoid placing it in direct sunlight to prevent fabric fading.



**MARTHA STEWART**  
**Bedford Lifestyle Collection**

**Sophisticated Design  
with Farmhouse Aesthetic**

*Image: Sophisticated Design with Farmhouse Aesthetic. The chair features a natural hemp upholstered seat and back, complemented by an antique reclaimed natural finish solid wood frame, embodying a blend of traditional and farmhouse styles.*

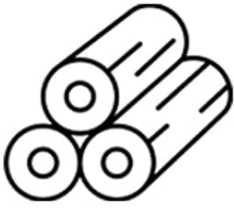


*Image: Martha Stewart Whitney Accent Chair. This image provides a clear view of the chair's design, including its curved wooden arms and back, and the plush seat and back cushions.*

## **MAINTENANCE AND CARE**

Proper care will help maintain the appearance and extend the life of your accent chair.

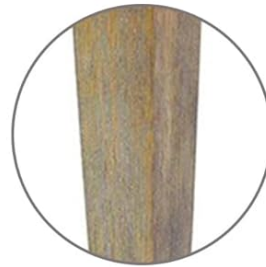
- **Cleaning:** Spot clean or steam clean the upholstered fabric as needed. Blot spills immediately with a clean, dry cloth.
- **Sunlight Exposure:** Keep fabric out of direct sunlight to prevent fading.
- **Frame Care:** The solid wood frame with a reclaimed natural finish can be wiped clean with a soft, damp cloth. Avoid harsh chemicals.



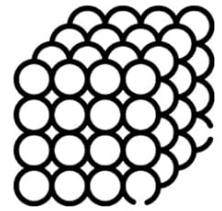
**Solid wood frame**



**Durable natural  
hemp upholstery**



**Antique wood finish**



**High Density Foam**

*Image: Quality Materials. This image highlights the chair's construction from solid wood, durable natural hemp fabric, antique wood finish, and high-density foam for comfort and longevity.*

**Distinct silhouette with curved wooden frame**



**A stylish turned legs for a sophisticated touch.**



**Upholstered with high-grade and durable natural hemp fabric**



*Image: Design Details. This image focuses on the chair's aesthetic features, including its curved wooden frame, elegantly turned legs, and the texture of the natural hemp fabric.*

## TROUBLESHOOTING

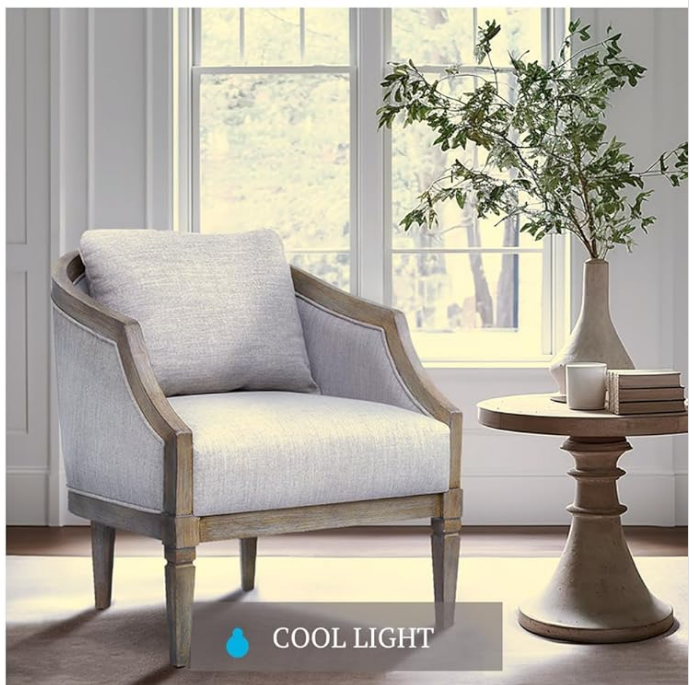
If you encounter any issues with your Whitney Accent Chair, please refer to the following common solutions:

- **Wobbly Chair:** Ensure all leg attachment bolts are securely tightened. Re-tighten if necessary.
- **Fabric Stains:** For minor spills, spot clean immediately as per the "Maintenance and Care" section. For persistent stains, consult a professional upholstery cleaner.
- **Discomfort:** Ensure the backrest cushion is properly positioned. The cushion is removable, allowing for adjustment to personal preference.

## PRODUCT SPECIFICATIONS

Feature	Detail
---------	--------

Feature	Detail
Brand	Martha Stewart
Model Name	Whitney Accent Chair
Item Model Number	MT100-0176
Color	Natural
Product Dimensions	27"W x 29"D x 31"H
Seat Height	18.5 Inches
Seat Depth	18.5 inches
Seat Length	23 Inches
Back Style	Cushion, Removable Back Cushion
Arm Style	Scoop arms
Frame Material	Solid Wood
Upholstery Material	Natural Hemp Fabric
Fill Material	Foam
Finish Type	Reclaimed Natural
Maximum Weight Recommendation	300 Pounds
Item Weight	37.6 pounds
Assembly Required	Yes
UPC	022164314618



*Image: Chair in Various Lighting. This composite image demonstrates how the chair's natural color upholstery and reclaimed natural wood finish appear under different lighting conditions, from bright to dim, and warm to cool.*

## WARRANTY AND SUPPORT

For specific warranty information or customer support regarding your Martha Stewart Whitney Accent Chair, please refer to the documentation included with your purchase or contact Martha Stewart customer service directly. Contact details are typically available on the manufacturer's website or product packaging.