

Zippo 65850

Zippo Single Torch Butane Lighter Insert User Manual

Model: 65850

1. INTRODUCTION

This manual provides essential instructions for the safe and effective use of your Zippo Single Torch Butane Lighter Insert. This insert is designed to fit all classic Zippo lighter cases, offering a modern, odorless blue torch flame with push-button piezo ignition.

The Zippo Single Torch Butane Lighter Insert provides a reliable, windproof flame, ideal for various applications. For optimal performance, always use genuine Zippo butane fuel.

2. SAFETY INFORMATION

- **Keep Out of Reach of Children:** Lighters are not toys. Store in a safe place away from children.
- **Ignite Away from Face and Clothing:** Always ensure the flame is directed away from your body and any flammable materials.
- **Contains Flammable Gas Under Pressure:** Handle with care. Do not puncture or incinerate.
- **Do Not Keep Lit for More Than 10 Seconds:** Prolonged use can cause the insert to overheat.
- **Use Only Zippo Butane Fuel:** Using other fuels may damage the insert or cause unsafe operation.
- **Do Not Expose to Heat Above 120°F (49°C):** High temperatures can cause the butane to expand and potentially rupture the insert.

3. PACKAGE CONTENTS

- 1 x Zippo Single Torch Butane Lighter Insert (Model 65850)
- 1 x Instruction Manual

Note: The lighter case and butane fuel are sold separately and are not included with the insert.



SINGLE
TORCH BUTANE



**DOES NOT CONTAIN BUTANE
GAS.** Lighter insert is empty,
read enclosed filling instructions.

GENUINE
**Single Torch Butane
Lighter Insert**



Image: Zippo Single Torch Butane Lighter Insert in its retail packaging. The packaging highlights features like 'Reliable

Spark', 'Built to Last', 'Easy Ignition', 'Reusable', 'Wind Resistant', and 'Pocket Sized'. It also states 'DOES NOT CONTAIN BUTANE GAS. Lighter insert is empty, read enclosed filling instructions.' and 'GENUINE Single Torch Butane Lighter Insert'.

4. COMPATIBILITY

The Zippo Single Torch Butane Lighter Insert is designed to fit all classic Zippo lighter cases. It is **not compatible** with Slim, Armor, or 1935 Replica cases.



Image: A Zippo Single Torch Butane Lighter Insert, chrome-plated, with the lid open, showing the single torch nozzle and the Zippo branding on the side.

5. SETUP

5.1. Installing the Insert

1. Open your Zippo lighter case.
2. Remove the existing insert from the case.
3. Slide the Zippo Single Torch Butane Lighter Insert into the case until it fits snugly.

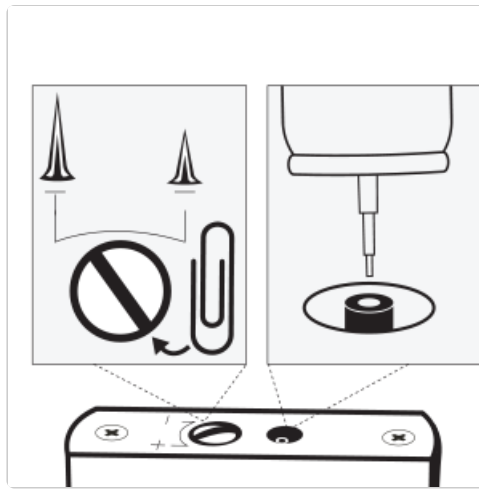


Image: A diagram illustrating the process of inserting the butane lighter mechanism into a Zippo case. A hand is shown pushing the insert into the open lighter case.

5.2. Filling with Butane Fuel

The insert is shipped unfilled. Before first use, it must be filled with Zippo butane fuel.

1. Hold the insert upside down.
2. Firmly insert the nozzle of the Zippo butane fuel can into the refill valve located at the bottom of the insert.
3. Press down for approximately 5-6 seconds. Repeat 2-3 times for a full fill.
4. Wait a few seconds for the fuel to stabilize before attempting to ignite.



Image: A close-up view of the bottom of the Zippo Single Torch Butane Lighter Insert. It clearly shows the butane refill port and a screw for flame adjustment, labeled with '+' and '-' symbols.

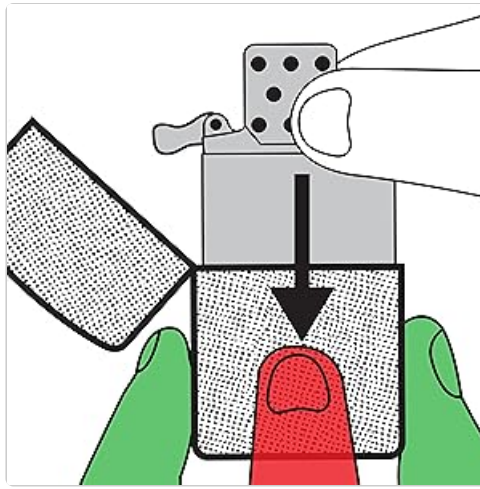


Image: A diagram illustrating the refill process and flame adjustment. It shows the butane canister nozzle being inserted into the refill port and highlights the flame adjustment screw with '+' and '-' indicators. It also warns against using metal objects to short the terminals.

6. OPERATING INSTRUCTIONS

1. Open the Zippo lighter case.
2. Press the ignition button to activate the blue torch flame.
3. Release the button to extinguish the flame.
4. Close the Zippo lighter case to protect the insert and prevent accidental ignition.

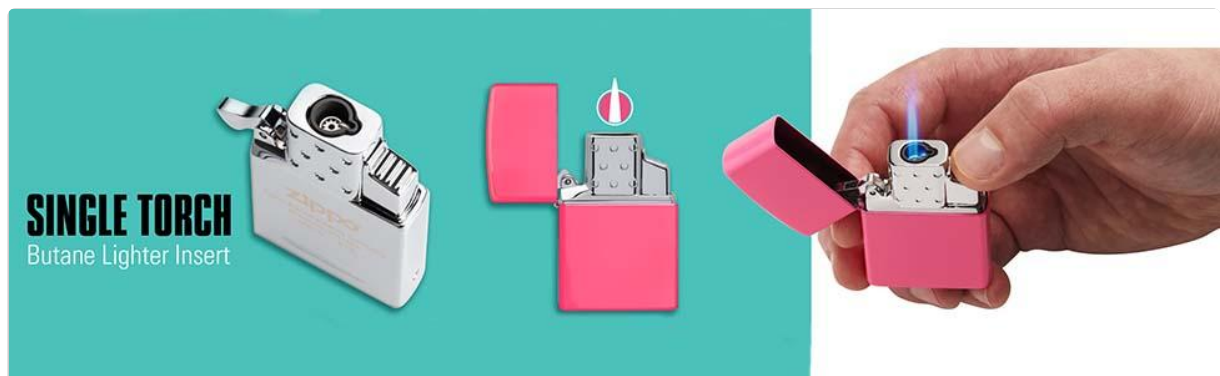


Image: A hand holding a Zippo lighter with the Single Torch Butane Lighter Insert. The blue torch flame is visible, demonstrating the product in use.

7. FLAME ADJUSTMENT

The flame height can be adjusted using a small flathead screwdriver. The adjustment screw is located at the bottom of the insert, next to the refill valve.

- Turn towards the '+' symbol for a larger flame.
- Turn towards the '-' symbol for a smaller flame.

Adjust the flame to your desired height, ensuring it is stable and safe for use.

8. MAINTENANCE

8.1. Refilling

Refill the insert as described in Section 5.2. The .9g capacity provides up to 100 5-second ignitions per fill, depending on flame height and usage.

8.2. Cleaning

Periodically clean the torch nozzle with a soft, dry cloth to remove any debris that may obstruct the flame.

9. TROUBLESHOOTING

Problem	Possible Cause	Solution
Lighter does not ignite or flame is weak.	Low or no butane fuel.	Refill with Zippo butane fuel (see Section 5.2).
	Flame adjustment too low.	Adjust flame height (see Section 7).
	Air trapped in the fuel tank.	Purge the air from the tank by pressing the refill valve with a small tool until no gas escapes, then refill.
Flame is inconsistent or sputters.	Debris in the nozzle.	Clean the torch nozzle (see Section 8.2).
	Low fuel level.	Refill with Zippo butane fuel.

10. SPECIFICATIONS

- **Brand:** Zippo
- **Model Number:** 65850
- **Color:** Chrome Single Torch
- **Material:** Aluminum
- **Style:** Butane Single Torch
- **Fuel Type:** Liquefied Petroleum Gas (Butane)
- **Flame Type:** Odorless blue torch flame
- **Ignition:** Push-button piezo ignition
- **Max Flame Temperature:** Up to 2,300°F / 1,260°C
- **Fuel Capacity:** 0.9g (provides up to 100 5-second ignitions)
- **Item Weight:** 1.76 ounces
- **Product Dimensions:** 1.4 x 0.5 x 2.1 inches
- **Manufacturer:** Zippo
- **UPC:** 191693658507

11. OFFICIAL PRODUCT VIDEO

Your browser does not support the video tag.



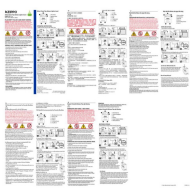
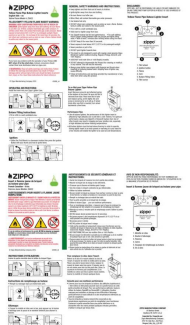


Video: An official Zippo video showcasing various Zippo lighter inserts, including the single torch butane insert. It demonstrates the ease of swapping inserts and highlights different flame types available.

12. WARRANTY AND SUPPORT

The Zippo Single Torch Butane Lighter Insert is backed by a two-year Zippo warranty. For warranty claims, product support, or additional information, please visit the official Zippo website or contact Zippo customer service.

Zippo Official Website: www.zippo.com

Related Documents - 65850

	<p>Zippo Butane Torch Lighter Inserts: Safety Warnings and Instructions</p> <p>Essential safety warnings, usage instructions, and disposal guidelines for Zippo Butane Torch Lighter Inserts, including models Z8A19 and 28819. Learn how to safely refill and maintain your Zippo torch lighter insert.</p>
	<p>Zippo Butane Torch Lighter Inserts: Instructions, Warnings, and Warranty</p> <p>Comprehensive guide to Zippo Butane Torch Lighter Inserts (#Z8A19, #Z8B19), including safety warnings, operating instructions, butane filling, flame adjustment, and a two-year limited warranty.</p>
	<p>Zippo Yellow Flame Pipe Butane Lighter Insert: Instructions and Safety Guide</p> <p>Comprehensive guide for the Zippo Yellow Flame Pipe Butane Lighter Insert (Model ZB8A22). Includes installation, butane filling, ignition instructions, and essential safety warnings for safe operation.</p>
	<p>Zippo Yellow Flame Pipe Butane Lighter Insert Z8A22 - Instructions & Safety Guide</p> <p>Comprehensive guide for the Zippo Yellow Flame Pipe Butane Lighter Insert (Model Z8A22). Includes operating instructions, butane filling, ignition, flint replacement, safety warnings, and performance tips.</p>
	<p>Zippo Pipe Lighter Insert Instructions and Safety Guide</p> <p>Comprehensive instructions for installing, using, and maintaining the Zippo Pipe Lighter Insert, including essential safety warnings and tips for optimal performance.</p>
	<p>Zippo Butane Torch Instruction Manual</p> <p>Comprehensive guide to operating, filling, and maintaining the Zippo Butane Torch. Includes safety instructions, troubleshooting tips, and warranty information.</p>

