

[Manuals.plus](#) /

> [NEEWER](#) /

> NEEWER Snap On ND&CPL Filter Set for DJI Mini 4 Pro Instruction Manual

NEEWER 10104292

NEEWER Snap On ND&CPL Filter Set for DJI Mini 4 Pro Instruction Manual

Model: 10104292

INTRODUCTION

This manual provides detailed instructions for the NEEWER Snap On ND&CPL Filter Set, designed specifically for the DJI Mini 4 Pro drone. This set includes a CPL filter and various Neutral Density (ND) filters (ND8, ND16, ND32, ND64, ND128) to enhance your aerial photography and videography by controlling exposure and managing reflections.

The filters feature premium HD optical glass with multi-protective coatings, ensuring high clarity and durability in diverse shooting conditions. Their ultra-slim frame design ensures a secure fit without affecting drone calibration or flight performance.



Image: NEEWER Snap On ND&CPL Filter Set with DJI Mini 4 Pro drone.

PACKAGE CONTENTS

Verify that all items listed below are included in your package:

- 1 x CPL Filter
- 1 x ND8 Filter
- 1 x ND16 Filter
- 1 x ND32 Filter
- 1 x ND64 Filter
- 1 x ND128 Filter
- 1 x Filter Case
- 1 x Cleaning Cloth

Easy to Install



Image: All components included in the NEEWER filter set.

SETUP: FILTER INSTALLATION

Follow these steps to correctly install the filters on your DJI Mini 4 Pro drone camera:

1. **Remove the Original Protective Filter:** Gently twist and pull off the drone's existing protective lens cover.
2. **Align the Filter:** Match the indents on the NEEWER filter frame with the corresponding bumps on the drone's camera lens housing.
3. **Attach and Rotate:** Carefully push the filter onto the lens. Once seated, rotate it gently until it clicks into place, ensuring a secure fit.
4. **Verify Fit:** Ensure the filter is firmly attached and does not obstruct the gimbal's movement.

Note on Initial Fit: Some users may find the filters initially stiff to attach. It is recommended to gently flex the flexible parts of the filter frame before attempting to slide it onto the gimbal. Avoid forcing the filter, as this could damage the drone's delicate gimbal mechanism. With careful handling, the fit will become smoother over time.

Package Contents

1 x CPL Filter
1 x ND8 Filter

1 x ND16 Filter
1 x ND32 Filter

1 x ND64 Filter
1 x ND128 Filter

1 x Filter Case
1 x Cleaning Cloth



Image: Step-by-step guide for filter installation.

OPERATING THE FILTERS

Neutral Density (ND) Filters (ND8, ND16, ND32, ND64, ND128)

ND filters reduce the amount of light entering the camera sensor, allowing for slower shutter speeds or wider apertures in bright conditions. This helps prevent overexposure and enables cinematic motion blur effects in videos.

- **ND8:** Reduces light by 3 stops, suitable for slightly bright sunlight.
- **ND16:** Reduces light by 4 stops, ideal for moderately bright sunlight.
- **ND32:** Reduces light by 5 stops, for brighter sunlight conditions.
- **ND64:** Reduces light by 6 stops, recommended for very bright sunlight.
- **ND128:** Reduces light by 7 stops, for extremely bright or sunny days.

Select the appropriate ND filter based on the ambient light conditions to achieve desired exposure and motion blur.

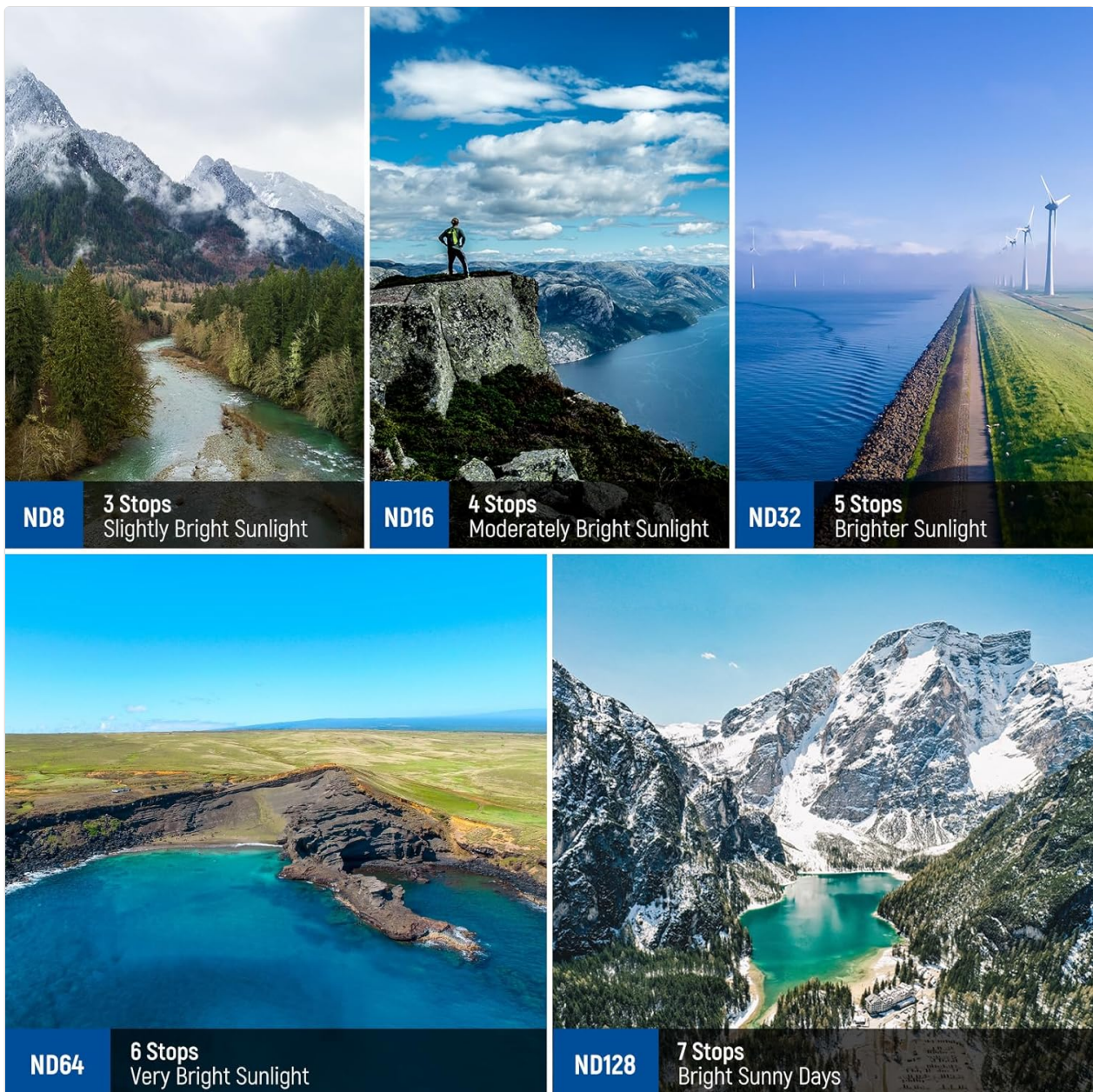


Image: Visual examples of ND filter effects in various lighting.

Circular Polarizer (CPL) Filter

The CPL filter is used to reduce glare and reflections from non-metallic surfaces such as water, glass, and foliage. It also enhances color saturation and contrast, particularly in skies and landscapes.

To use the CPL filter, install it on the drone camera. Once installed, gently rotate the outer ring of the filter while observing the live feed from your drone. Rotate until the desired level of glare reduction and color enhancement is achieved.



CPL Filter

Enhance color and contrast or remove glare from water and glass by rotating the CPL filter.

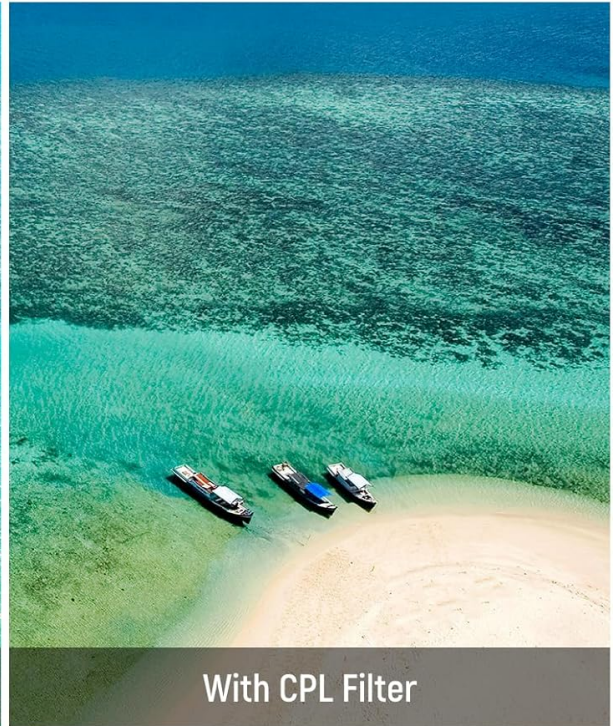
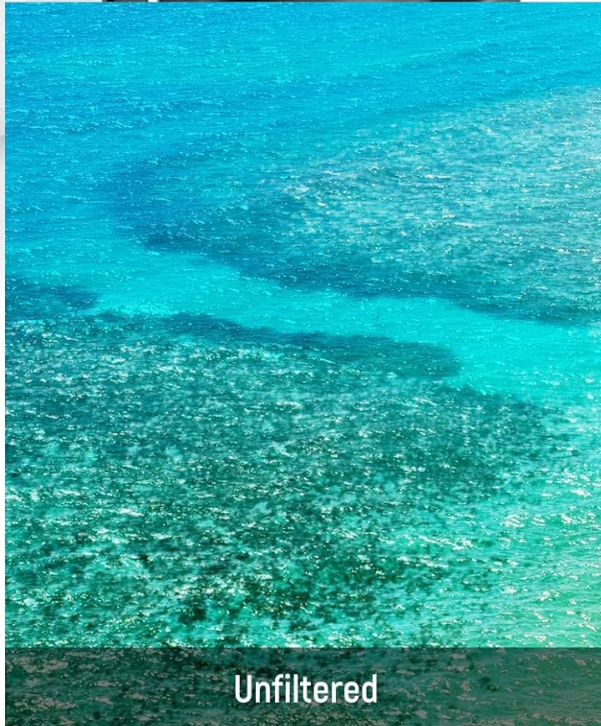


Image: Before and after comparison demonstrating CPL filter effects on water reflections.

MAINTENANCE

Proper care and maintenance will prolong the life and performance of your NEEWER filters.

- **Cleaning:** Use the provided cleaning cloth to gently wipe the filter surfaces. The multi-coated optical glass is water repellent, scratch resistant, and oil proof, making it easy to clean fingerprints, dust, and water spots. Avoid using harsh chemicals or abrasive materials.
- **Storage:** Always store the filters in the included protective case when not in use. This prevents dust accumulation and protects them from scratches and impacts.
- **Handling:** Handle filters by their frames to avoid touching the glass surface, which can leave fingerprints and smudges.

Protective Multi Resistant Coatings



Water &
Oil Repellent



Scratch
Resistant



Dust
Proof

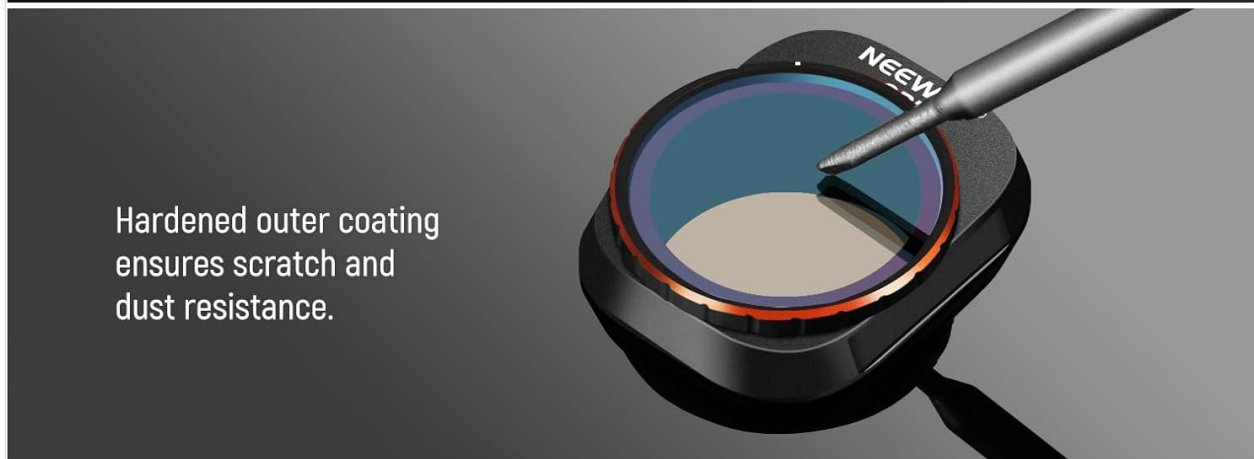


Image: Illustration of the protective multi-resistant coatings on the filters.

TROUBLESHOOTING

- **Filter Does Not Fit:** If a filter feels too tight or does not snap on easily, ensure it is correctly aligned with the drone's camera housing. As noted in the Setup section, new filters may be stiff. Gently flex the flexible parts of the filter frame before installation. Do not force the filter, as this can damage the drone's gimbal.
- **Image Quality Issues:** If you experience blurry images or unexpected artifacts, ensure the filter is clean and free of smudges or dust. Also, verify that the correct filter type (ND or CPL) is being used for the current lighting conditions.
- **Vignetting (Dark Corners):** The ultra-slim frame design of these filters is intended to prevent vignetting. If you observe dark corners in your footage, ensure the filter is fully seated and correctly aligned.

SPECIFICATIONS

Brand	NEEWER
-------	--------

Model Number	10104292
Material	HD Optical Glass, Aluminum Alloy Frame
Coating Description	Multi Coating (water repellent, scratch resistant, oil proof, and anti-reflective)
Photo Filter Effect Type	Neutral Density, Circular Polarizer
Water Resistance Level	Water Repellent
Item Weight (per filter)	Approximately 0.03oz / 1.3g
Max. Thickness	0.16" / 4.3mm
Compatibility	DJI Mini 4 Pro
UPC	191073095175

WARRANTY AND SUPPORT

NEEWER products are manufactured to high-quality standards. For warranty information, technical support, or any inquiries regarding your product, please refer to the official NEEWER website or contact their customer service directly. Keep your purchase receipt for warranty claims.

For further assistance, visit the [NEEWER Store on Amazon](#).