

## KFD TDW-1789-DE

# KFD 24V 1.5A Power Adapter User Manual

For Yoocaa 12 Pods Hydroponics Growing System (Model TDW-1789-DE)

## 1. INTRODUCTION

This manual provides essential instructions for the safe and effective use of your KFD 24V 1.5A Power Adapter, model TDW-1789-DE. This adapter is specifically designed to power the Yoocaa 12 Pods Hydroponics Growing System (model YO-SPD12-001), providing the necessary 24 Volts DC at 1.5 Amperes for its LED grow light and other components.

Please read this manual thoroughly before operating the device and retain it for future reference.

## 2. SAFETY INSTRUCTIONS

To ensure safe operation and prevent damage, observe the following safety precautions:

- **Input Voltage:** Ensure the wall outlet voltage is within the adapter's specified input range of 100-240V AC.
- **Dry Environment:** Use the adapter only in dry indoor environments. Avoid exposure to water, moisture, or high humidity.
- **Ventilation:** Do not cover the adapter during use, as this may lead to overheating.
- **Cable Integrity:** Regularly inspect the power cable for any signs of damage. Do not use if the cable or plug is damaged.
- **Proper Connection:** Ensure the adapter's output plug is securely and correctly connected to the hydroponics system.
- **Built-in Protections:** The adapter features multiple safety protections, including Over Voltage Protection (OVP), Over Current Protection (OCP), Short Circuit Protection (SCP), Over Load Protection, Over Temperature Protection, and Over Charger Protection. These features are designed to protect both the adapter and the connected device.

# Built in with safety electronics



Over-Temp  
Protection



Over Current  
Protection



Over Current  
Protection



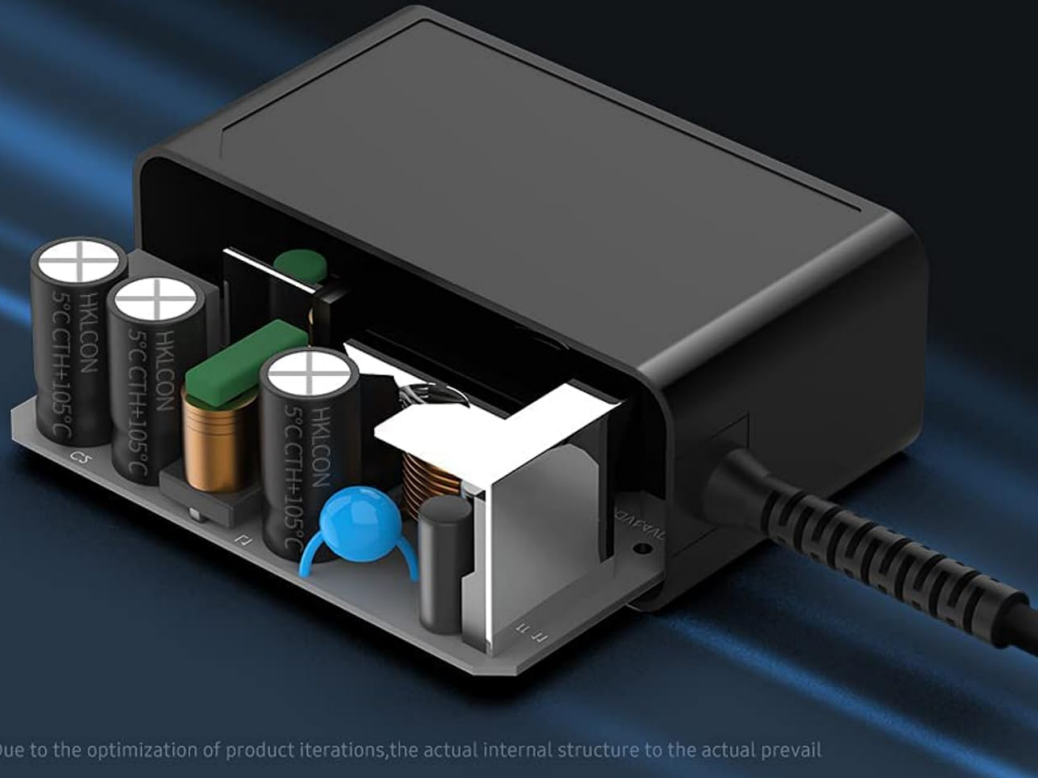
Over Load  
Protection



Short Circuit  
Protection



Over Charger  
Protection



\* Due to the optimization of product iterations, the actual internal structure to the actual prevail

**Figure 1:** Internal safety electronics of the KFD power adapter, illustrating built-in protections against over-temperature, over-current, over-load, and short circuits.

### 3. PACKAGE CONTENTS

Verify that all items are present in the package:

- KFD 24V 1.5A Power Adapter (Model TDW-1789-DE)
- European Power Cable

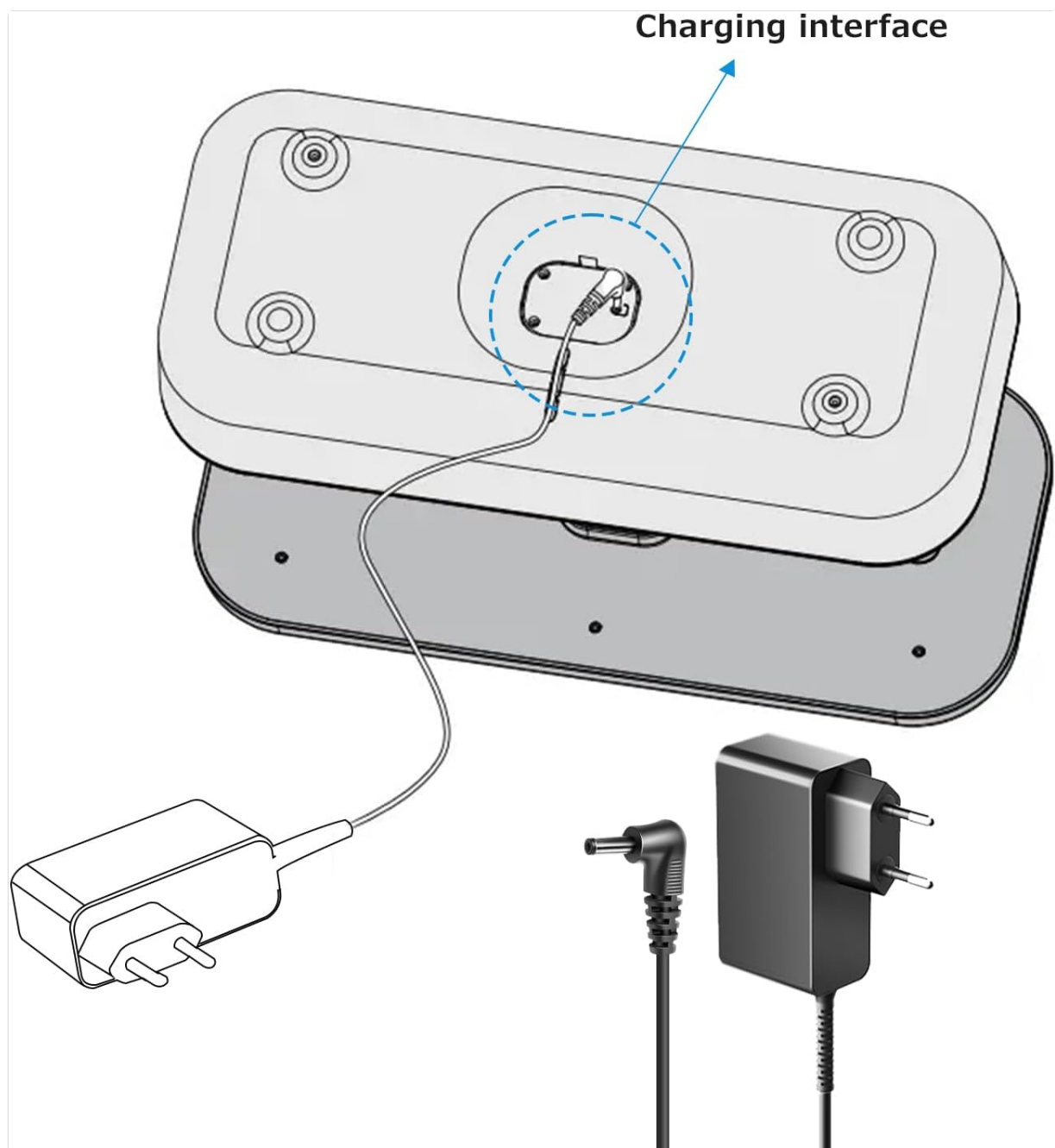


**Figure 2:** The KFD 24V 1.5A Power Adapter, including the main adapter unit and its integrated European power cable.

## 4. SETUP

Follow these steps to connect your power adapter to the Yoocaa Hydroponics Growing System:

1. **Identify the Charging Interface:** Locate the power input port on your Yoocaa 12 Pods Hydroponics Growing System. This is typically on the underside or back of the unit.
2. **Connect the Adapter:** Insert the output plug of the KFD power adapter into the charging interface of the hydroponics system. Ensure a firm and secure connection.
3. **Plug into Wall Outlet:** Insert the European power plug of the adapter into a standard 100-240V AC wall outlet.
4. **Verify Power:** Once connected, the hydroponics system should receive power, and its indicators (e.g., LED grow lights) should activate according to the system's design.



**Figure 3:** Illustration of the hydroponic system's charging interface and the adapter's plug, demonstrating the correct connection point.



**Figure 4:** The KFD power adapter actively supplying power to a YooCAA hydroponic growing system, with the adapter plugged into a wall outlet.

## 5. OPERATING

The KFD 24V 1.5A Power Adapter functions as a continuous power supply for your YooCAA Hydroponics Growing System. Once properly connected and plugged into a live electrical outlet, it will provide the necessary power to operate the system's components, such as the LED grow lights and water pump.

- Ensure the hydroponics system's power switch (if applicable) is in the 'ON' position.
- The adapter does not have user-adjustable settings; its operation is automatic upon connection to power.

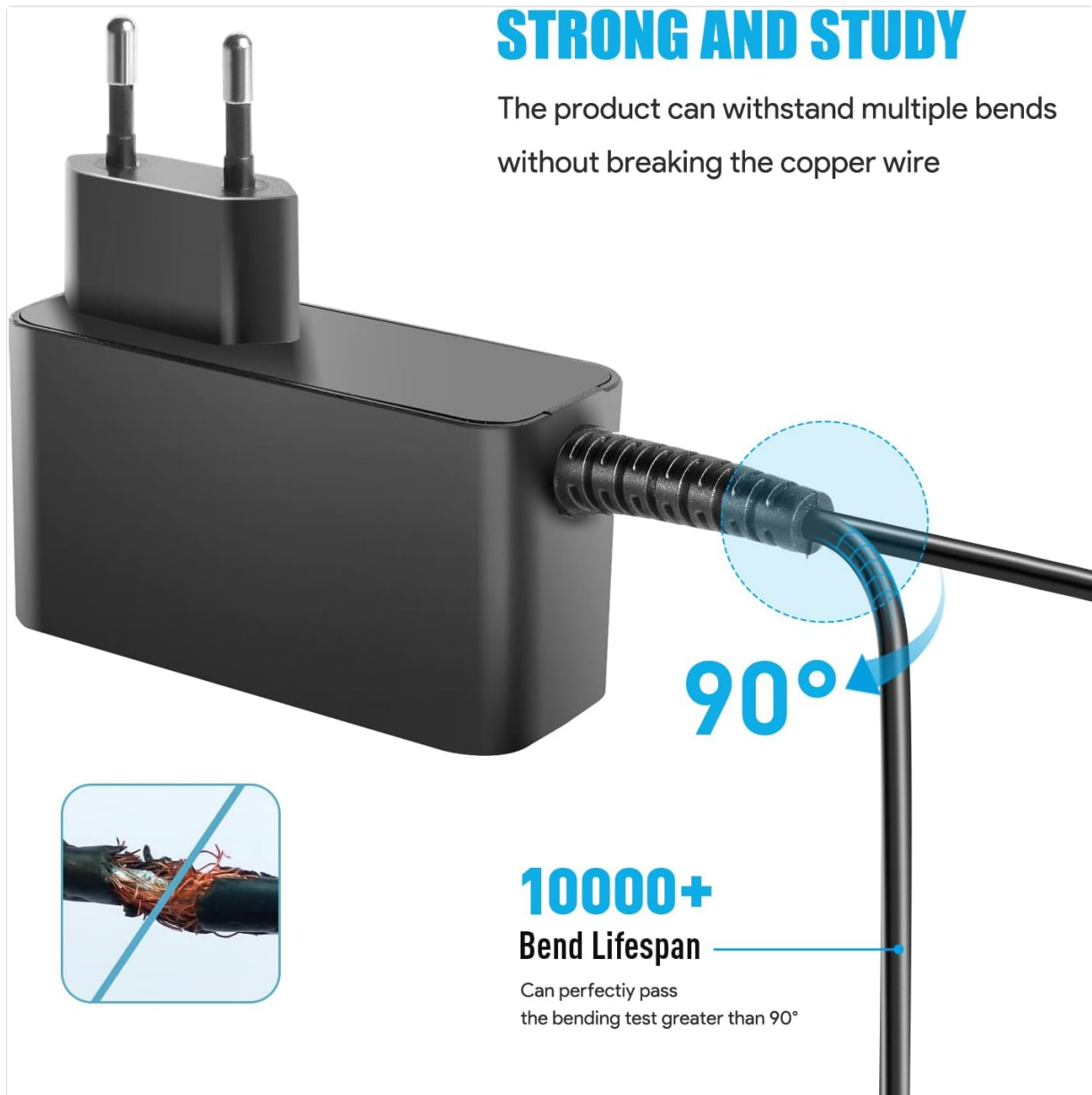
## 6. MAINTENANCE

Proper maintenance ensures the longevity and safe operation of your power adapter:

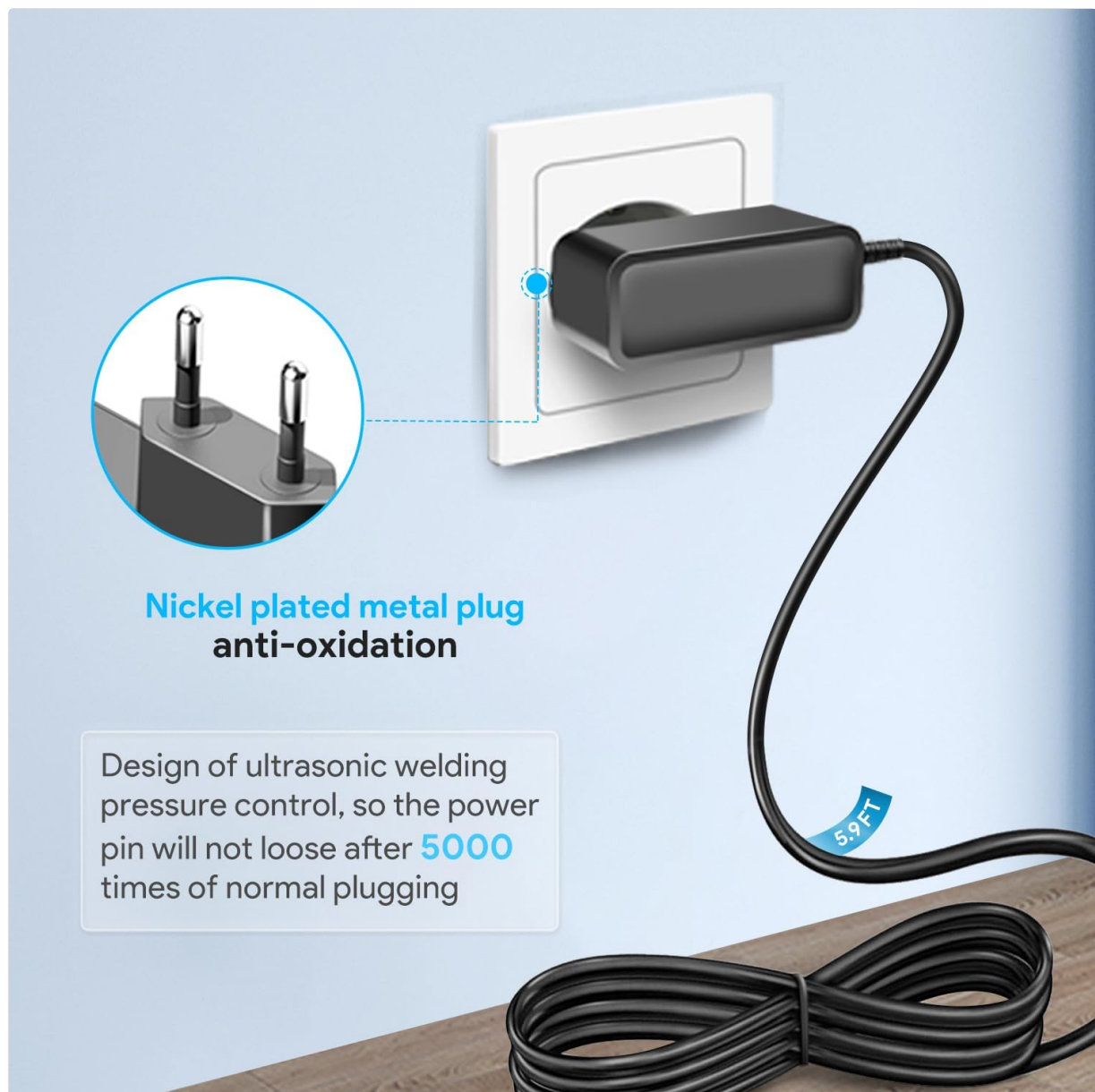
- **Cleaning:** Disconnect the adapter from the power outlet and the hydroponics system before cleaning. Use a soft, dry cloth to wipe the exterior. Do not use liquid cleaners or solvents.
- **Storage:** When not in use, store the adapter in a cool, dry place, away from direct sunlight and extreme temperatures.



- **Cable Care:** Avoid sharp bends, kinks, or excessive pulling on the power cable. While the cable is designed for durability with a 10,000+ bend lifespan, improper handling can still cause damage.
- **Plug Durability:** The nickel-plated metal plug is designed for anti-oxidation and to maintain a secure connection even after 5000 normal plugging cycles.



**Figure 5:** The power adapter's cable is engineered for durability, capable of withstanding over 10,000 bends without compromising the copper wire.



**Figure 6:** Detail of the adapter's nickel-plated metal plug, designed for anti-oxidation, and the cable's robust construction to prevent loosening after numerous plugging cycles.

## 7. TROUBLESHOOTING

If you encounter issues with your power adapter, refer to the following common problems and solutions:

Problem	Possible Cause	Solution
---------	----------------	----------

Problem	Possible Cause	Solution
No power to hydroponics system	<ul style="list-style-type: none"><li>• Adapter not plugged in correctly.</li><li>• Wall outlet is not live.</li><li>• Hydroponics system power switch is off.</li><li>• Damaged adapter or cable.</li></ul>	<ul style="list-style-type: none"><li>• Ensure adapter is fully inserted into both the wall outlet and the hydroponics system.</li><li>• Test the wall outlet with another device.</li><li>• Turn on the hydroponics system's power switch.</li><li>• Inspect adapter and cable for visible damage. If damaged, discontinue use and replace.</li></ul>
Hydroponics system not functioning correctly (e.g., dim lights)	<ul style="list-style-type: none"><li>• Incorrect power adapter used.</li><li>• Adapter is faulty.</li></ul>	<ul style="list-style-type: none"><li>• Verify that the adapter is indeed the KFD 24V 1.5A model TDW-1789-DE, specifically designed for your Yoocaa system.</li><li>• If the issue persists after checking connections and power source, the adapter may be faulty. Contact customer support.</li></ul>
Adapter feels excessively hot	<ul style="list-style-type: none"><li>• Poor ventilation.</li><li>• Overload or internal fault.</li></ul>	<ul style="list-style-type: none"><li>• Ensure the adapter is in an open area with adequate airflow.</li><li>• Disconnect immediately. The adapter has over-temperature protection, but persistent overheating indicates a problem.</li></ul>

## 8. SPECIFICATIONS

Brand	KFD
Model Number	TDW-1789-DE
Input Voltage	AC 100-240V, 50/60Hz
Output Voltage	DC 24V
Output Current	1.5A
Power Output	36W



<b>Special Features</b>	Short Circuit Protection, Over Voltage Protection (OVP), Over Current Protection (OCP), Over Load Protection, Over Temperature Protection, Over Charger Protection
<b>Certifications</b>	TUV, GS, CB, CE, UL, ROHS, FCC, REACH
<b>Power Source</b>	Corded Electric
<b>Cable Length</b>	Approx. 5.9 ft (1.8 meters)

## 9. WARRANTY AND SUPPORT

KFD is committed to providing high-quality power solutions. This product has been thoroughly tested to ensure superior performance and reliability.

- **Warranty:** This product comes with a **3-year warranty**. Please retain your proof of purchase for warranty claims.
- **Customer Support:** For any questions, technical assistance, or warranty inquiries, please contact KFD customer support through your retailer or the official KFD website.



**Wir versprechen**







Wir engagieren uns für Sekundärenergie-lösungen Maßgeschneidert  
Die Ideen und technischen Bedürfnisse unserer Kunden.

Seien Sie versichert, dieses Produkt wurde getestet.  
Bringen Sie sich auch bei intensiver Nutzung von Ihrer besten Seite



**Figure 7:** KFD offers a 3-year warranty and dedicated customer support for its products, ensuring customer satisfaction and product reliability.

## Related Documents - TDW-1789-DE

	<p><a href="#">CANNA Hydroponics: A Professional Guide to Rockwool Growing</a></p> <p>An introduction to CANNA Hydroponics, detailing rockwool growing techniques, nutrient feeding schedules, and best practices for optimal plant growth and fruit development.</p>
	<p><a href="#">SoftLogix5800 Controller Version 15 Release Notes   Rockwell Automation</a></p> <p>Comprehensive release notes for Rockwell Automation's SoftLogix5800 Controller, Version 15. Details software compatibility, system requirements, corrected anomalies, enhancements, restrictions, and installation guidance for industrial automation.</p>
	<p><a href="#">Danner Air Pumps AP-Series Care &amp; Operating Instructions   Aquarium &amp; Pond Use</a></p> <p>Comprehensive care and operating instructions for Danner AP-Series air pumps, including models AP-20, AP-40, AP-60, and AP-100. Covers features, indoor and pond installation guidelines, and important safety precautions.</p>
	<p><a href="#">Franke FMY 907 FM Cooker Hood Installation Manual</a></p> <p>Comprehensive installation guide for the Franke FMY 907 FM cooker hood, providing step-by-step instructions, parts list, dimensions, and safety information.</p>
	<p><a href="#">Manual del Operador Sun Joe 24V-XFP5-CT: Bomba de Transferencia de Agua Inalámbrica</a></p> <p>Guía completa de seguridad, operación y mantenimiento para la bomba de transferencia de agua inalámbrica Sun Joe modelo 24V-XFP5-CT. Incluye instrucciones detalladas y consejos para un uso seguro y eficiente.</p>
	<p><a href="#">ILUMINAR Commercial LED Lighting Solutions Catalog</a></p> <p>Explore ILUMINAR Lighting's comprehensive range of commercial LED grow lights, including iLogic PLUS series, HYPERMOL PRO, UNDER CANOPY, iLW, and DE HPS/MH fixtures. Discover advanced features, specifications, and accessories for optimal plant growth.</p>

