



[Manuals.plus](#) /

> [HoMedics](#) /

> HoMedics 11" Drift Sandscape, Compact Size, Zen Garden, Meditation Accessories, Decorative Sandscape, Smart LED Lighting, Wi-Fi Enabled (Nude) - Instruction Manual

HoMedics ST-200-NU

HoMedics 11" Drift Sandscape Instruction Manual

Model: ST-200-NU

Brand: HoMedics

PRODUCT OVERVIEW

The HoMedics 11" Drift Sandscape is a compact, Wi-Fi enabled device designed to bring tranquility and mindfulness into your space. It features a metal sphere that silently carves mesmerizing patterns in sand, accompanied by smart LED lighting. Control is managed entirely through a dedicated mobile application, allowing for pattern selection, light customization, and guided meditations.

Key features include:

- **Compact Design:** 11-inch diameter, ideal for desks, consoles, or side tables.
- **Mindfulness Aid:** Creates calming sand patterns to promote relaxation, creativity, mood enhancement, and focus.
- **App Controlled:** Access hundreds of patterns, customize ambient light colors, and utilize guided meditations via the mobile app.
- **Next-Generation Features:** Wi-Fi enabled for fast content downloads, individually controlled smart LED lights, and WhisperLite microbeads for quiet operation.



The HoMedics 11" Drift Sandscape, featuring a metal sphere creating intricate patterns in sand.



The Drift Sandscape is designed to increase relaxation, boost mood, inspire creativity, and enhance focus through its mesmerizing patterns.

SETUP GUIDE

What's in the Box:

- 1 HoMedics 11" Drift Sandscape Unit
- 1 Quick-Start Guide
- 1 100g Sand Pack
- 1 Metal Ball
- 1 Sand Rake Tool
- 1 Power Adapter with Switching Adapter

Initial Setup:

1. **Unpack:** Carefully remove all components from the packaging.
2. **Place Sand:** Gently pour the entire 100g sand pack into the circular basin of the Sandscape unit, distributing it evenly.
3. **Position Metal Ball:** Place the metal ball into the center of the sand.
4. **Connect Power:** Plug the power adapter into the Sandscape unit and then into a standard electrical outlet. The unit will power on.
5. **Download App:** Search for the official HoMedics Drift app on your mobile device's app store. **Important:** For the 11" model, ensure you download the specific app with a **white icon**, not the purple one, as there are different apps for different sizes.
6. **Pair Device:** Open the HoMedics Drift app and follow the on-screen instructions to pair your Sandscape unit. Ensure your mobile device is connected to a 2.4 GHz Wi-Fi network during the pairing process, as the Sandscape operates on this frequency.



**app
controlled**

**wi-fi enabled
for lightning-fast
downloads**

**customizable
ambient
lighting**

**simple setup,
no patience
necessary**

The HoMedics Drift Sandscape is app-controlled and Wi-Fi enabled for easy setup and customization.

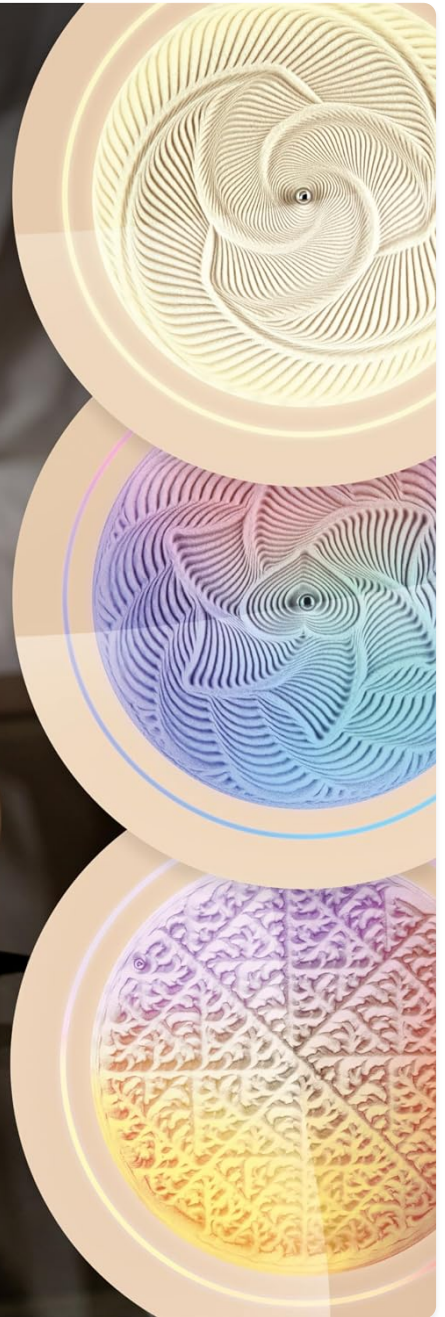
OPERATING INSTRUCTIONS

The HoMedics Drift Sandscape is primarily operated through its dedicated mobile application. Once paired, you can explore a variety of features to customize your experience.

Using the App:

- **Pattern Selection:** Browse through hundreds of pre-programmed mesmerizing sand patterns. Simply tap on a pattern to initiate its creation. The metal ball will begin to move, carving the selected design into the sand.
- **Light Customization:** Adjust the ambient LED lighting to complement your mood or the chosen pattern. The app allows you to select from a wide spectrum of colors and various light programs, including dynamic effects like sunsets or rainstorms.
- **Guided Meditations:** Access a library of immersive guided meditations directly through the app to enhance your relaxation experience.
- **Speed Control:** Adjust the speed at which patterns are drawn to suit your preference.
- **Custom Playlists:** Create custom playlists of your favorite patterns to play sequentially.
- **Timer Function:** Set a timer for the Sandscape to operate, controlling both the ball movement and the lighting.

hundreds of mesmerizing patterns



Explore hundreds of mesmerizing patterns to create a unique visual experience.



smart LEDs

individually controlled lights for amazing
awe-inducing light programs like sunsets,
rainstorms, and more.

Smart LEDs allow for individually controlled lighting, creating awe-inducing light programs.

MAINTENANCE

The HoMedics Drift Sandscape requires minimal maintenance to ensure optimal performance and appearance.

- **Cleaning:** Periodically wipe the exterior of the unit with a soft, dry cloth to remove dust.
- **Sand Care:** If the sand appears uneven or compacted, use the provided sand rake tool to gently smooth it out. Avoid introducing foreign objects into the sand.
- **Metal Ball:** Ensure the metal ball is clean and free of debris to allow for smooth movement.
- **Placement:** Place the unit on a stable, level surface away from direct sunlight, excessive heat, or moisture.

TROUBLESHOOTING

If you encounter issues with your HoMedics Drift Sandscape, please refer to the following common problems and solutions:

Problem	Possible Cause / Solution
Unit does not power on or respond.	Ensure the power adapter is securely plugged into both the unit and a working electrical outlet. Try a different outlet.
Cannot connect to Wi-Fi or app.	Verify your mobile device is connected to a 2.4 GHz Wi-Fi network. The Sandscape does not support 5 GHz networks. Ensure you have downloaded the correct HoMedics Drift app for the 11" model (white app icon). Try resetting the unit by unplugging it for 10 seconds and plugging it back in. If issues persist after an app update, a factory reset of the unit might be necessary (refer to the app for specific instructions, or contact support).
App freezes or crashes.	Ensure your app is updated to the latest version. Close and restart the app. Restart your mobile device.
Patterns are not drawing correctly or ball stops.	Ensure the unit is on a perfectly level surface. Check if the sand is evenly distributed and free of debris. Verify the metal ball is clean. Restart the pattern or the unit.
Timer function or clock is inaccurate.	While the timer function has been improved to include lights, minor discrepancies in the internal clock may occur over time. Ensure the app is updated, and if issues persist, a unit reset might help.
Only the first 20 patterns play in a playlist.	Currently, playlists may be limited to playing only the first 20 patterns. This is a known limitation; consider creating shorter playlists or manually selecting patterns.

SPECIFICATIONS

Feature	Detail
Product Dimensions	3.42"D x 11"W x 11"H
Item Weight	6.4 Pounds
Power Source	Corded Electric
Voltage	120 Volts (AC)

Feature	Detail
Connectivity Technology	Wi-Fi (2.4 GHz)
Control Method	Application (App)
Light Source Type	LED
Number of Light Sources	3
Material	Metal (Shade)
Finish Type	Lacquered
Indoor/Outdoor Usage	Indoor
Country of Origin	China
UPC	031262112774

WARRANTY AND SUPPORT

Product Warranty:

The HoMedics 11" Drift Sandscape comes with a **2-year limited warranty** from the date of purchase. This warranty covers defects in materials and workmanship under normal use. Please retain your proof of purchase for warranty claims.

Extended Protection Plans:

Additional protection plans may be available for purchase, including 3-Year and 4-Year protection plans, as well as a monthly 'Complete Protect' plan. Please refer to your retailer or HoMedics official channels for details on these extended options.

Customer Support:

For further assistance, technical support, or warranty inquiries, please visit the official HoMedics Store or contact their customer service directly. You can find more information and contact details by visiting the [HoMedics Store on Amazon](#).