

[Manuals.plus](#) /

› [Amazon Renewed](#) /

› Generic C9800-L-F-K9 Catalyst 9800 Wireless Uplink Controller User Manual

Amazon Renewed C9800-L-F-K9

Generic C9800-L-F-K9 Catalyst 9800 Wireless Uplink Controller User Manual

Model: C9800-L-F-K9

INTRODUCTION

This user manual provides comprehensive instructions for the setup, operation, maintenance, and troubleshooting of the Generic C9800-L-F-K9 Catalyst 9800 Wireless Uplink Controller. Please read this manual thoroughly before operating the device to ensure proper functionality and safety.

The C9800-L-F-K9 is a high-performance wireless uplink controller designed for robust network environments, offering advanced connectivity and management capabilities.

PACKAGE CONTENTS

Upon opening the package, verify that all items listed below are present and in good condition:

- C9800-L-F-K9 Controller
- Essential Accessories (e.g., power cable, mounting kit if applicable)
- Menu Instruction (Quick Start Guide or basic setup instructions)

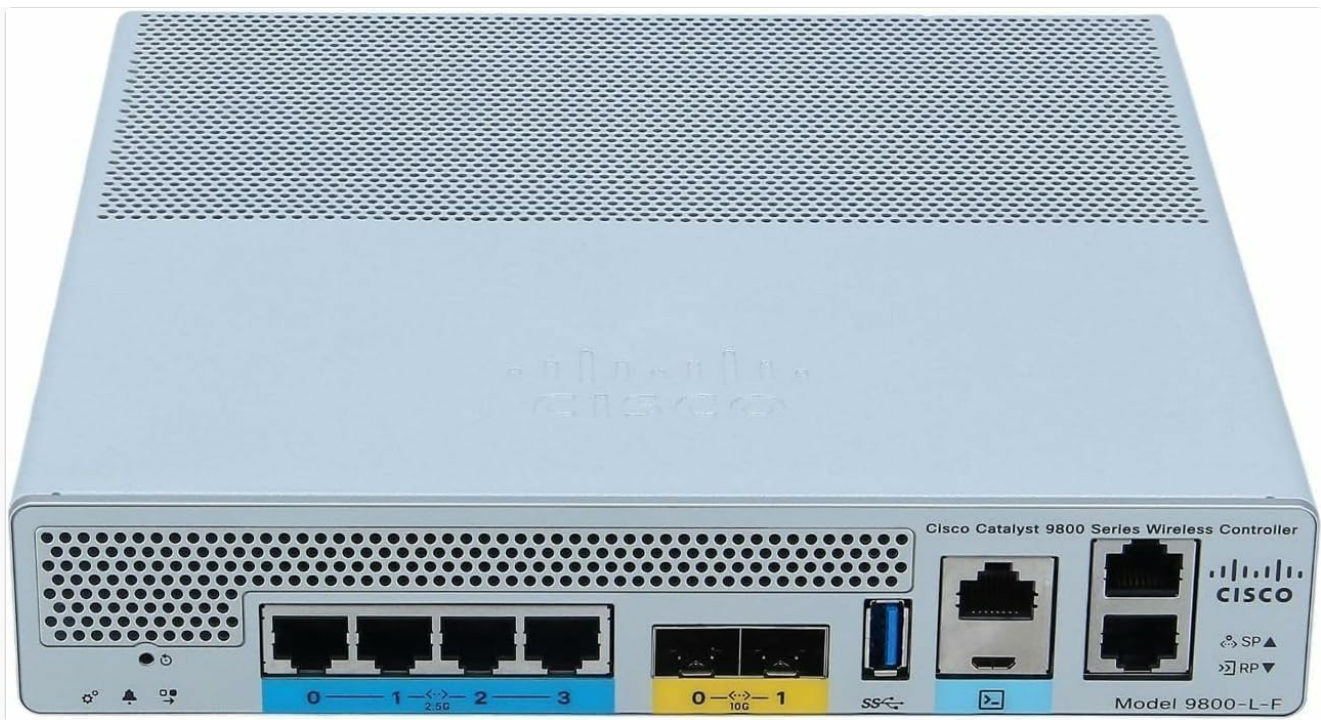


Figure 1: Front view of the C9800-L-F-K9 Wireless Uplink Controller. The image displays the front panel with multiple Ethernet ports, SFP ports, a USB port, and status indicators. The model number "Model 9800-L-F" is visible on the right side.

SETUP GUIDE

1. Physical Installation

1. **Choose a Suitable Location:** Place the controller in a well-ventilated area, away from direct sunlight, heat sources, and excessive moisture. Ensure adequate space for cable management and airflow.
2. **Mounting (if applicable):** If rack-mounting, secure the controller using the provided mounting brackets and screws. Ensure it is firmly seated in the rack.
3. **Connect Power:** Connect the power cable to the controller's power input and then to a grounded electrical outlet. Do not power on the device yet.

2. Network Connections

1. **Uplink Ports:** Connect your network's uplink cables to the appropriate SFP or Ethernet uplink ports (e.g., ports labeled "0" and "1" for 10G SFP, or ports "0" through "3" for 2.5G Ethernet). Refer to the port labels on the device for specific speeds and types.
2. **Management Port:** Connect a network cable from your management workstation or network switch to the dedicated management Ethernet port (often labeled with a gear icon or specific management designation).
3. **Console Port (Optional):** For initial configuration or troubleshooting, connect a console cable (e.g., RJ-45 to USB) from your computer to the controller's console port.

3. Initial Power On

1. Once all physical connections are made, power on the controller. Observe the status indicator lights for proper boot-up sequence.
2. Allow several minutes for the device to initialize.

OPERATING INSTRUCTIONS

The C9800-L-F-K9 controller is primarily managed via a Command Line Interface (CLI) or a Web-based Graphical User Interface (GUI). Refer to the manufacturer's official documentation for detailed configuration guides.

1. Accessing the Controller

- **CLI Access:** Use a terminal emulator (e.g., PuTTY, SecureCRT) connected via the console port or SSH to the management IP address.
- **GUI Access:** Open a web browser and navigate to the controller's management IP address.

2. Basic Configuration

Upon first access, you will typically be prompted to complete an initial setup wizard or configure basic network parameters. This includes:

- Setting a strong administrator password.
- Configuring IP address, subnet mask, and default gateway.
- Setting system time and date.
- Enabling necessary services (e.g., SSH, HTTPS).

3. Wireless Network Management

The primary function of this controller is to manage wireless access points (APs) and client connectivity. Key operational tasks include:

- Discovering and joining access points.
- Creating and managing WLANs (Wireless Local Area Networks).
- Configuring security policies (e.g., WPA2/WPA3, 802.1X).
- Monitoring network performance and client statistics.
- Performing firmware upgrades for the controller and managed APs.

MAINTENANCE

Regular maintenance ensures the longevity and optimal performance of your wireless controller.

- **Firmware Updates:** Periodically check the manufacturer's website for the latest firmware versions. Apply updates to benefit from new features, security patches, and bug fixes.
- **Configuration Backups:** Regularly back up your controller's configuration. This is crucial for quick recovery in case of system failure or misconfiguration.
- **Environmental Checks:** Ensure the operating environment remains within specified temperature and humidity ranges. Keep ventilation openings clear of dust and obstructions.
- **Physical Inspection:** Periodically inspect cables and connections for wear or damage.

TROUBLESHOOTING

This section provides basic troubleshooting steps for common issues.

Problem	Possible Cause	Solution
Controller not powering on	Power cable loose; power outlet faulty; internal power supply issue.	Check power cable connection; try a different power outlet; contact support if issue persists.

Problem	Possible Cause	Solution
Cannot access controller via network	Incorrect IP address; network cable issue; firewall blocking access.	Verify IP configuration; check network cable and switch port; temporarily disable firewall for testing.
Access points not joining controller	AP discovery issues; incorrect AP configuration; firmware incompatibility.	Ensure APs are on the same network segment or have proper routing; verify AP configuration; check firmware compatibility matrix.

For more complex issues, consult the manufacturer's official documentation or contact technical support.

SPECIFICATIONS

Feature	Detail
Model Number	C9800-L-F-K9
Product Dimensions (L x W x H)	9.06 x 8.5 x 1.58 inches
Manufacturer	CSCO SYSTEMS - ENTERPRISE
Operation Mode	Automatic
Connector Type	SFP, Ethernet (RJ45)
Circuit Type	Multi-way
Contact Material	Copper
Control Method	Touch (likely refers to initial setup or specific features, typically CLI/GUI for full control)
Connectivity Protocol	Wi-Fi
Color	White
Unit Count	1

WARRANTY AND SUPPORT

As this product is listed as "Renewed" by Amazon Renewed, specific warranty terms may vary. Please refer to the Amazon Renewed [program details](#) for information regarding their 90-day guarantee or any extended protection plans purchased.

For technical support, it is recommended to consult the original manufacturer's (CSCO SYSTEMS - ENTERPRISE, likely Cisco) official support resources and documentation for the Catalyst 9800 series controllers. You may also contact the seller, NetEquityRenewed, for assistance related to your renewed product purchase.

- **Amazon Renewed Program:** <https://www.amazon.com/Amazon-Renewed/b?node=12653393011>
- **Original Manufacturer Support:** Search for "Cisco Catalyst 9800 Series documentation" online.
- **Seller (NetEquityRenewed) Contact:** Refer to your Amazon order details for seller contact information.

© 2024 User Manual. All rights reserved.

This manual is for informational purposes only. Specifications are subject to change without notice.