

manuals.plus /

› [Fuxtec](#) /

› [Fuxtec 40V Cordless Lawn Mower E2RM37 User Manual](#)

Fuxtec FX-E2RM37SET

Fuxtec 40V Cordless Lawn Mower E2RM37 User Manual

Model: FX-E2RM37SET

1. INTRODUCTION

Thank you for choosing the Fuxtec 40V Cordless Lawn Mower E2RM37. This manual provides essential information for the safe and efficient operation, maintenance, and troubleshooting of your new lawn mower. Please read this manual thoroughly before first use and keep it for future reference.



Figure 1: Fuxtec 40V Cordless Lawn Mower E2RM37 with included batteries and charger.

2. SAFETY INFORMATION

Always observe basic safety precautions when using electrical appliances to reduce the risk of fire, electric shock, and personal injury. This includes, but is not limited to:

- Read all instructions carefully before operation.
- Wear appropriate personal protective equipment (PPE), including eye protection and sturdy footwear.
- Ensure the work area is clear of debris and other persons, especially children and pets.
- Do not operate the mower in wet conditions or rain.
- Always remove the safety key and batteries before cleaning, adjusting, or performing maintenance.
- Keep hands and feet away from the cutting blade.

3. PACKAGE CONTENTS

Upon unpacking, please verify that all components are present and undamaged:

- Fuxtec 40V Cordless Lawn Mower E2RM37 unit
- 2 x 20V Lithium-Ion Batteries
- Dual Charger
- Grass Catcher (40 Liters)
- Handle Assembly
- Safety Key
- User Manual (this document)



Figure 2: The Fuxtec FX-E2RM37 lawn mower with its 2x 20V 4Ah batteries and dual charger.

4. SETUP AND ASSEMBLY

The Fuxtec E2RM37 lawn mower requires minimal assembly. Follow these steps:

1. **Handle Assembly:** Attach the lower handle to the mower body using the provided bolts and knobs. Secure the upper handle to the lower handle, ensuring all cables are properly routed and not pinched.
2. **Grass Catcher Assembly:** Assemble the grass catcher according to the instructions provided with the catcher. Once assembled, hook it onto the rear of the mower.
3. **Battery Charging:** Insert the 20V Lithium-Ion batteries into the dual charger. Connect the charger to a suitable power outlet. The indicator lights on the charger will show the charging status. Charge batteries fully before first use.
4. **Battery Installation:** Open the battery compartment cover on the mower. Insert both fully charged 20V batteries into their respective slots. Ensure they click into place.
5. **Safety Key:** Insert the safety key into its designated slot in the battery compartment. The mower will not operate without the safety key inserted.



Fuxtec FX-E2RM37Set



Figure 3: Proper insertion of the two 20V batteries into the mower's battery compartment.

5. OPERATING INSTRUCTIONS

5.1. Adjusting Cutting Height

The Fuxtec E2RM37 offers a variable cutting height from 25mm to 75mm. To adjust, locate the height adjustment lever on the side of the mower. Pull the lever outwards and move it to the desired position. Ensure all four wheels are at the same height setting for an even cut.



Figure 4: The mower features a cutting height range of 25-75mm for versatile lawn care.

5.2. Starting and Stopping the Mower

To start the mower:

1. Ensure the safety key is fully inserted.
2. Press and hold the safety button (usually on the handle).
3. While holding the safety button, pull the bail lever (gas lever) towards the handle. The motor will start.
4. Release the safety button, but continue to hold the bail lever to keep the mower running.

To stop the mower, simply release the bail lever. The blade will stop rotating within a few seconds.

5.3. Mowing Tips

- For best results, mow dry grass.
- Do not attempt to cut more than one-third of the grass blade length at a time.
- Overlap cutting paths slightly to ensure complete coverage.
- The mower has a 37cm cutting width, suitable for efficient coverage of medium-sized lawns.
- The 40L grass catcher allows for extended mowing sessions before needing to be emptied.

FUXTEC 

DER MÄHER MIT AKKU-POWER

INDIVIDUALISIERBAR

dank höhenverstellbarem
Holm

ABNEHMBARER 40 LITER GRASFANGKORB

für ein sauberes
Arbeitsergebnis

SCHNITTHÖHEN- VERSTELLUNG

25-75 mm



Figure 5: Key features include an adjustable handle, a 40-liter grass catcher, and cutting height adjustment.



37CM

Figure 6: The mower's 37cm cutting width ensures efficient lawn care.



Figure 7: The 40-liter grass catcher minimizes interruptions for emptying.

6. MAINTENANCE

Regular maintenance ensures the longevity and optimal performance of your Fuxtec lawn mower.

6.1. Cleaning

- Always remove the safety key and batteries before cleaning.
- Clean the underside of the mower and the blade area after each use to prevent grass buildup. Use a brush or scraper.
- Wipe down the exterior with a damp cloth. Do not use high-pressure water or immerse the mower in water.
- Empty and clean the grass catcher regularly.



Figure 8: The underside of the mower, showing the cutting blade, which should be cleaned after each use.

6.2. Blade Care

- Inspect the blade regularly for sharpness and damage. A dull blade can tear grass, leading to an unhealthy lawn.
- If the blade is dull, it can be sharpened or replaced. Consult a qualified service technician for blade sharpening or replacement.
- Ensure the blade is balanced after sharpening to prevent excessive vibration.

6.3. Battery Care

- Store batteries in a cool, dry place away from direct sunlight and extreme temperatures.
- Do not store fully discharged batteries for extended periods. Charge them periodically if not in use.
- Use only the original Fuxtec charger for charging.
- The Fuxtec 20V battery system is designed for compatibility across multiple Fuxtec tools.

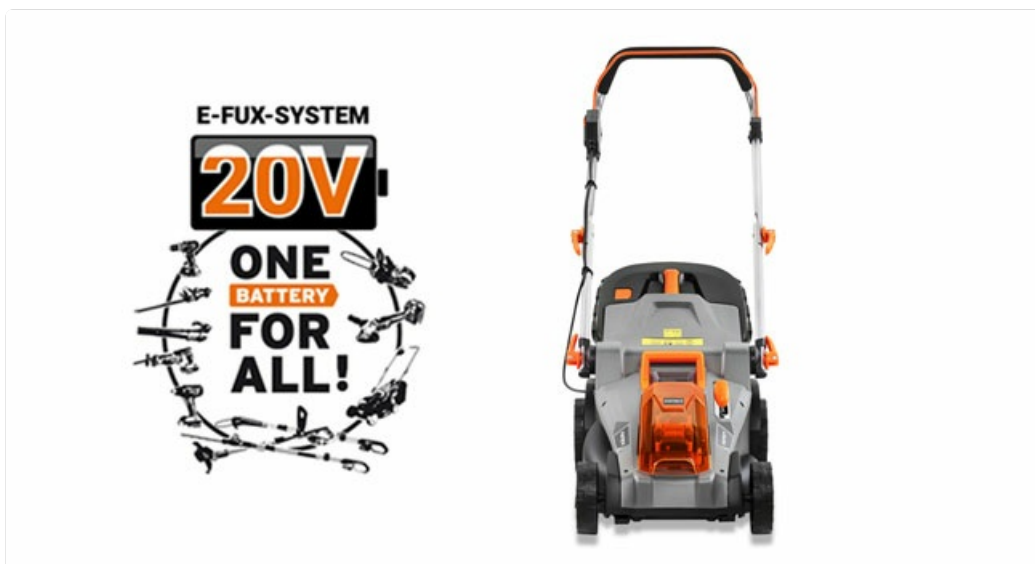


Figure 9: The Fuxtec 20V battery system offers compatibility with a range of Fuxtec power and garden tools.

7. TROUBLESHOOTING

This section addresses common issues you might encounter with your Fuxtec lawn mower.

Problem	Possible Cause	Solution
Mower does not start.	Batteries not inserted correctly. Batteries discharged. Safety key not inserted. Safety button or bail lever not engaged.	Ensure batteries are fully seated. Charge batteries fully. Insert safety key. Engage safety button and bail lever simultaneously.
Mower stops during operation.	Batteries low or depleted. Overload protection activated (e.g., cutting very thick/wet grass). Grass catcher full.	Recharge or replace batteries. Reduce cutting load; raise cutting height. Empty grass catcher.
Uneven cut.	Cutting height not set evenly on all wheels. Dull or damaged blade.	Ensure all wheels are at the same height setting. Sharpen or replace blade.
Excessive vibration.	Damaged or unbalanced blade. Debris caught in blade area.	Inspect blade for damage; replace if necessary. Ensure blade is balanced. Clear any debris from the blade area (with batteries removed and safety key out).

8. SPECIFICATIONS

Technical specifications for the Fuxtec 40V Cordless Lawn Mower E2RM37:

Feature	Detail
Model	FX-E2RM37SET
Power Source	40V (2x 20V Lithium-Ion Batteries)

Feature	Detail
Cutting Width	37 cm
Cutting Height Adjustment	25 - 75 mm (Variable)
Grass Catcher Capacity	40 Liters
Weight	Approx. 15 kg (without batteries) / 19 kg (packaged)
Motor Type	Electric Motor
Noise Level	91 dB
Battery Runtime	Up to 55 minutes (depending on conditions)



FUXTEC

TECHNISCHE
DATEN

Schnittbreite 37cm



15kg



2 x 20V



Akku-Laufzeit
bis zu 55 Min.



40 Liter
Fangkorb



Elektromotor



Schnitthöhe
25-75mm



91db



2 Akkus
inklusive

Figure 10: Overview of the Fuxtec E2RM37's technical specifications.

9. WARRANTY AND SUPPORT

Fuxtec products are designed for durability and performance. For warranty information and customer support, please refer to the official Fuxtec website or contact their customer service directly. As a company based in Germany, Fuxtec offers dedicated technical support and long-term availability of spare parts.

For further assistance, you can visit the Fuxtec store on Amazon: [Fuxtec Amazon Store](#).

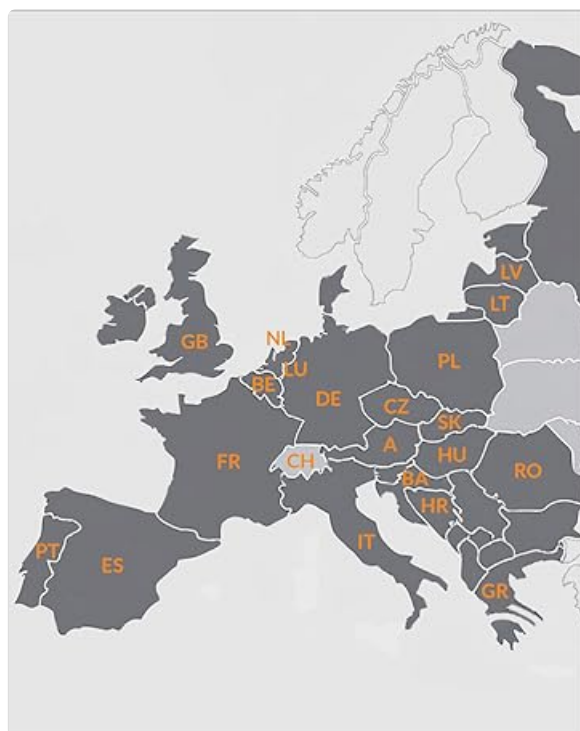


Figure 11: Fuxtec is a European company committed to quality and customer satisfaction.