

## Imagebon 9"(4+64G)

# Imagebon 9-Inch Portable Carplay Screen User Manual

Model: 9"(4+64G) | Brand: Imagebon

## 1. INTRODUCTION

Thank you for choosing the Imagebon 9-inch Portable Carplay Screen. This device is designed to enhance your driving experience by bringing advanced Android capabilities, seamless smartphone integration, and versatile multimedia options directly to your vehicle. With its powerful hardware and user-friendly interface, you can enjoy navigation, entertainment, and connectivity on the go.

## 2. PRODUCT FEATURES

- **Powerful Android System:** Equipped with an 8-Core CPU, 4GB RAM, and 64GB ROM, running on Android 13 for smooth and efficient performance.
- **Seamless Smartphone Integration:** Supports wireless Apple CarPlay and Android Auto for hands-free calls, navigation, and app control via Bluetooth or Wi-Fi.
- **Enhanced Multimedia Experience:** Access popular streaming apps like YouTube, Netflix, and TikTok directly from the Google Play Store.
- **Versatile Audio Outputs:** Connect to your car's audio system via Bluetooth, USB, AUX, or FM transmission.
- **Screen Mirroring:** Utilize AirPlay and Miracast to mirror your device's screen for easy access to maps, videos, and music.
- **GPS Navigation:** Built-in GPS with support for offline maps (Google Maps, Waze, Apple Map, Sygic) when connected to Wi-Fi or a phone hotspot.
- **OTA Upgrade Support:** Receive over-the-air updates to keep your device's software current.
- **Dash Cam Compatibility:** Record footage directly to the device's internal storage or an SD card (dash cam not included).



Figure 2.1: Overview of the Imagebon Portable Carplay Screen interface.

# Advanced Configuration for High Performance



8 Core Chip



Android 13



4+64GB Memory



**8 Core Chip**  
**Android 13**  
**4+64GB Memory**

Figure 2.2: Highlighting the advanced hardware configuration.

# 3 in 1 Android 13.0 CarPlay & Android Auto

———— Switch at will ————



Android 13



Wireless CarPlay



Wireless Android Auto



Figure 2.3: Demonstrating 3-in-1 connectivity options.

## 3. WHAT'S IN THE BOX

---

- Imagebon Portable Carplay Screen
- AUX Cable
- Car Charger
- GPS Antenna
- 3M Sticky Mount



# package Include

8.86 inch

5.59 inch



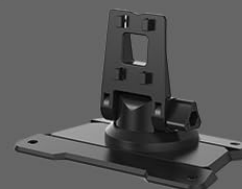
AUX Cable



Car Charger



GPS



3M Sticky Mount

Figure 3.1: All included components in the package.

## 4. SETUP GUIDE

### 4.1 Initial Charging

Before first use, ensure the device is charged for at least 10 minutes using the original car charger or a 5V/3A charging head.

### 4.2 Mounting the Device

1. Attach the 3M Sticky Mount securely to a flat, clean surface on your car's dashboard.
2. Connect the portable carplay screen to the mounted stand.

## 4.3 Connecting Peripherals

1. Plug the car charger into your car's cigarette lighter socket and connect the USB-C end to the carplay screen.
2. Connect the GPS antenna to the designated GPS port on the device and place it on your dashboard for optimal signal reception.
3. For audio output through your car's speakers, connect the provided AUX cable from the carplay screen's AUX output to your car's AUX input. Alternatively, use FM transmission (refer to Operating Instructions).

Your browser does not support the video tag.

Video 4.1: Imagebon 4+64GB Android 13 Car Stereo - Demonstrates product features and setup.

## 5. OPERATING INSTRUCTIONS

---

### 5.1 Wireless CarPlay & Android Auto

1. Ensure Bluetooth and Wi-Fi are enabled on your smartphone.
2. On the carplay screen, select either 'CarPlay' or 'Android Auto' from the main menu.
3. Follow the on-screen prompts to pair your phone via Bluetooth. Once paired, the system will automatically connect for wireless CarPlay or Android Auto.
4. Enjoy hands-free navigation, music, calls, and messages.

### 5.2 GPS Navigation

The device comes with pre-installed navigation apps like Google Maps. Connect to Wi-Fi (via your phone's hotspot or an external Wi-Fi source) to download offline maps or use real-time navigation. The external GPS antenna ensures accurate positioning.

# GPS Navigation



Figure 5.1: GPS Navigation options available.

## 5.3 Multimedia Playback

Connect to Wi-Fi to access the Google Play Store and download your favorite streaming apps (Netflix, YouTube, TikTok, Spotify, etc.). You can also play music, videos, and view images from a connected USB flash drive or SD card.

## 5.4 System Settings

Access the 'Settings' icon from the main menu to customize various aspects of the device, including Wi-Fi, Bluetooth, display brightness, audio output, and system updates (OTA).

## 6. SPECIFICATIONS

Feature	Detail
Product Dimensions	2 x 9 x 5.59 inches
Item Weight	2.81 pounds
Screen Size	9 Inches
Operating System	Android 13
CPU	8 Core
Memory (RAM)	4GB
Storage (ROM)	64GB
Connectivity Technology	Bluetooth, Wi-Fi
Special Features	Android Auto, Apple CarPlay, Digital Display Screen, GPS Navigation, Multimedia Playback, OTA Upgrade
Audio Output Mode	Stereo (via Bluetooth, USB, AUX, FM)
Compatible Devices	Smartphone
Control Method	Touch

## 7. TROUBLESHOOTING

### 7.1 Device Not Powering On

- Ensure the car charger is securely plugged into both the device and the car's cigarette lighter.
- Verify that the car's power outlet is functioning correctly.
- Check if the device has sufficient charge (initial charge of 10+ minutes recommended).

### 7.2 No Audio Output

- If using AUX: Ensure the AUX cable is fully inserted into both the device and your car's AUX input. Select AUX as the input source on your car stereo.
- If using FM: Tune your car stereo to the same FM frequency displayed on the carplay screen. Adjust the volume on both the device and your car stereo.
- If using Bluetooth: Ensure your phone is successfully paired and connected to the carplay screen via Bluetooth. Check volume levels on both devices.

### 7.3 Wireless CarPlay/Android Auto Connectivity Issues

- Ensure your phone's Bluetooth and Wi-Fi are active.
- Forget the device from your phone's Bluetooth settings and re-pair.
- Restart both the carplay screen and your smartphone.



- Ensure the carplay screen's firmware is up to date via OTA update.

## 8. MAINTENANCE

---

To ensure the longevity and optimal performance of your Imagebon Portable Carplay Screen, follow these maintenance guidelines:

- **Cleaning:** Use a soft, lint-free cloth to clean the screen and exterior. Avoid abrasive cleaners or solvents that may damage the surface.
- **Temperature:** Avoid exposing the device to extreme temperatures (hot or cold) for prolonged periods, as this can affect battery life and internal components.
- **Storage:** If storing the device for an extended period, ensure it is fully charged and kept in a cool, dry place.
- **Cables:** Handle all cables and connectors with care to prevent damage.

## 9. WARRANTY AND SUPPORT

---

Imagebon products are manufactured to high-quality standards and are backed by a manufacturer's warranty. Please refer to the warranty card included in your package for specific terms and conditions.

For technical support, troubleshooting assistance, or any inquiries regarding your product, please contact our customer support team:

**Email:** [Imagebons@outlook.com](mailto:Imagebons@outlook.com)

Our support team is available 24/7 online to answer your questions and resolve any arising issues.