

## Manuals+

[Q & A](#) | [Deep Search](#) | [Upload](#)

[manuals.plus](#) /

› [ARZOPA](#) /

› [ARZOPA 27-inch 2K QHD 180Hz Gaming Monitor M1RC User Manual](#)

## ARZOPA M1RC

# ARZOPA 27-inch 2K QHD 180Hz Gaming Monitor

MODEL: M1RC USER MANUAL

## 1. Important Safety Information

---

Please read all instructions carefully before using this monitor. Keep this manual for future reference.

- Do not expose the monitor to rain, moisture, or extreme temperatures.
- Ensure proper ventilation around the monitor. Do not block ventilation openings.
- Use only the power adapter and cables provided by the manufacturer.
- Disconnect the power cable from the outlet if the monitor will not be used for an extended period.
- Do not attempt to service the monitor yourself. Refer all servicing to qualified personnel.

## 2. Package Contents

---

Verify that all items are present in your package:

- 1x ARZOPA 27" 2K Monitor
- 1x Power Adapter
- 1x Monitor Base
- 1x DP Cable
- 1x User Manual

## 3. Product Overview

---



**Figure 3.1: Front View of the ARZOPA M1RC Monitor.**

This image displays the monitor from the front, highlighting its slim bezels and the ARZOPA branding at the bottom center. The screen shows a vibrant butterfly image, illustrating the display's color capabilities.



**Figure 3.2: Rear View and Port Connections.** This image shows the back of the monitor with all available input and output ports clearly labeled. From left to right, the ports are: A (DC Power Input), B (HDMI 2.0 Port), C (DisplayPort 1.4), D (USB-C Port), and E (Audio Out Port).

### 3.1. Port Descriptions

- **DC Power Input:** Connects to the provided power adapter.
- **HDMI 2.0 Port:** Connects to devices supporting HDMI output.
- **DisplayPort 1.4:** Connects to devices supporting DisplayPort output.
- **USB-C Port:** Connects to compatible devices for video input.
- **Audio Out Port:** Connects to external headphones or speakers.

### 3.2. Control Buttons

The monitor features intuitive control buttons, typically located on the rear or bottom right side, for navigating the On-Screen Display (OSD) menu. These buttons allow you to power the monitor on/off and adjust various settings.

## 4. Setup

---

### 4.1. Stand Assembly

1. Carefully remove the monitor and base from the packaging.
2. Attach the monitor base to the stand column, ensuring it clicks securely into place or is fastened with screws if

applicable.

3. Attach the assembled stand to the back of the monitor, aligning the mounting points and securing it firmly.

## 4.2. Connecting to a Computer

Choose one of the following connection methods based on your computer's available ports:

- **DisplayPort Connection:** Connect one end of the provided DisplayPort cable to the DisplayPort output on your computer and the other end to the DisplayPort 1.4 input on the monitor.
- **HDMI Connection:** Connect one end of an HDMI cable (not included) to the HDMI output on your computer and the other end to the HDMI 2.0 input on the monitor.
- **USB-C Connection:** Connect one end of a USB-C cable (not included) to a compatible USB-C port on your computer (which supports video output) and the other end to the USB-C input on the monitor.

## 4.3. Power Connection

1. Connect the power adapter to the DC Power Input port on the monitor.
2. Plug the power adapter into a wall outlet.

# 5. Operating Instructions

---

## 5.1. Power On/Off

Press the power button, usually located on the rear or bottom of the monitor, to turn the monitor on or off. The power indicator light will illuminate when the monitor is on.

## 5.2. On-Screen Display (OSD) Menu

The OSD menu allows you to adjust various monitor settings. Use the control buttons to navigate and select options.

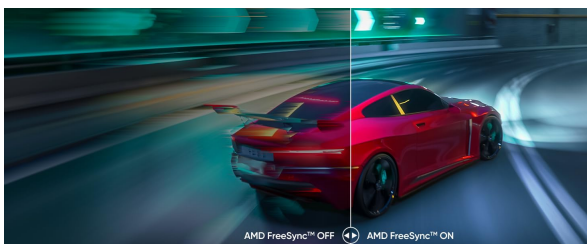
1. Press one of the OSD buttons to activate the menu.
2. Use the navigation buttons (up/down/left/right) to browse through menu options.
3. Press the select button to enter a sub-menu or confirm a setting.
4. Press the exit button to close the OSD menu.

## 5.3. Picture Settings

Adjust display characteristics for optimal viewing:

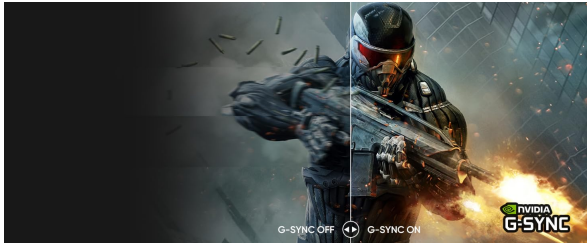
- **Brightness:** Controls the overall luminance of the screen.
- **Contrast:** Adjusts the difference between light and dark areas.
- **Color Temperature:** Selects preset color modes (e.g., Warm, Cool, User).
- **Aspect Ratio:** Sets the display ratio (e.g., 16:9, 4:3).

## 5.4. Gaming Features

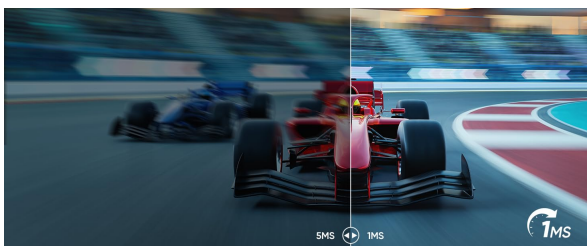


**Figure 5.1: 180Hz High Refresh Rate.** This image illustrates the difference between a 120Hz and 180Hz

refresh rate in a fast-paced racing game. The 180Hz side shows significantly smoother motion and reduced blur compared to the 120Hz side, enhancing gameplay fluidity.



**Figure 5.2: 1ms Response Time.** This image demonstrates the impact of response time on visual clarity during gaming. The 1ms response time side shows a sharp, clear image of a racing car, while the 5ms side exhibits noticeable motion blur, indicating faster pixel transitions for a clearer gaming experience.



**Figure 5.3: Adaptive Sync Technology.** This image compares the visual output with AMD FreeSync turned off versus on. With FreeSync OFF, screen tearing is visible, disrupting the image of the racing car. With FreeSync ON, the image is smooth and tear-free, ensuring a more fluid visual experience.

- **Refresh Rate:** The monitor supports up to 180Hz refresh rate for smoother motion. Ensure your graphics card and connection cable support this rate.
- **Response Time:** Features a 1ms response time to minimize ghosting and motion blur in fast-paced games.
- **Adaptive Sync:** Synchronizes the monitor's refresh rate with your graphics card's frame rate to eliminate screen tearing and stuttering. Enable this feature in your graphics card settings and the monitor's OSD.

## 6. Maintenance

---

### 6.1. Cleaning the Monitor

- Always unplug the monitor before cleaning.
- Use a soft, lint-free cloth lightly dampened with water or a non-abrasive screen cleaner.
- Do not spray cleaner directly onto the screen.
- Avoid using harsh chemicals or abrasive materials.

### 6.2. Storage

When storing the monitor, ensure it is kept in a cool, dry place, away from direct sunlight and extreme temperatures. Use the original packaging for protection if available.

## 7. Troubleshooting

---

Refer to this section for common issues and their solutions.

Problem	Possible Cause	Solution
No image on screen	Power cable disconnected; Video cable disconnected; Incorrect input source selected.	Check power and video cable connections; Select the correct input source via OSD.
Image is blurry or distorted	Incorrect resolution; Video cable issue.	Set the display resolution to 2560x1440; Try a different video cable.
Screen flickering	Refresh rate mismatch; Cable issue; Adaptive Sync setting.	Ensure refresh rate is set correctly (180Hz); Check/replace video cable; Verify Adaptive Sync settings.
No sound from audio out	Audio cable disconnected; Volume too low; Audio output not selected on PC.	Check audio cable connection; Adjust volume on monitor and PC; Select monitor as audio output device on PC.
HDR sometimes turns off	Software glitch; Power cycle needed.	Unplug the monitor's power cable for a few minutes, then reconnect. Ensure graphics drivers are updated.
Dead pixel on screen	Manufacturing defect.	Contact ARZOPA customer support for assistance.







## 8. Specifications

Feature	Specification
Screen Size	27 Inches
Resolution	2K QHD (2560 x 1440)
Refresh Rate	180Hz
Response Time	1ms
Panel Type	Fast IPS
Color Gamut	115% sRGB
Brightness	350 cd/m2
Aspect Ratio	16:9
Screen Surface	Matte
Connectivity	1x DisplayPort 1.4, 1x HDMI 2.0, 1x USB-C, 1x Audio Out
Mounting Compatibility	100x100mm VESA
Product Dimensions	24 x 17.5 x 6.7 inches
Item Weight	12.67 pounds

## 9. Warranty and Support

ARZOPA products are designed for reliability and performance. For warranty information or technical support, please refer to the warranty card included with your product or visit the official ARZOPA website. Keep your purchase receipt as proof of purchase for warranty claims.

Related Documents - M1RC

	<p><a href="#">ARZOPA A1 GAMUT SLIM 14" Portable Monitor User Guide</a></p> <p>User guide for the ARZOPA A1 GAMUT SLIM 14-inch portable monitor, detailing connection methods for laptops, PCs, and mobile phones, OSD menu functions, and product specifications. Includes information on recycling and environmental responsibility.</p>
	<p><a href="#">ARZOPA A1 15.6" Portable Monitor User Guide</a></p> <p>Comprehensive user guide for the ARZOPA A1 15.6-inch portable monitor, covering setup, connectivity options (USB-C, HDMI), and technical support.</p>
	<p><a href="#">ARZOPA A1S Portable Monitor User Guide</a></p> <p>Comprehensive guide to connecting and using the ARZOPA A1S 14.0 Full HD Portable Monitor with various devices including laptops, PCs, and phones via USB-C and HDMI.</p>
	<p><a href="#">ARZOPA A1S 14.0" Portable Monitor User Guide</a></p> <p>User guide for the ARZOPA A1S 14.0 inch Full HD portable monitor, detailing setup, connectivity options for various devices, and technical support information.</p>
	<p><a href="#">ARZOPA A1M 17.3" Portable Monitor User Guide   Setup &amp; Connection</a></p> <p>Comprehensive user guide for the ARZOPA A1M 17.3 inch portable monitor. Learn how to connect, setup, and troubleshoot your display. Includes setup diagrams and essential information.</p>
	<p><a href="#">ARZOPA A1 15.6 Inch Portable Monitor User Guide</a></p> <p>User guide for the ARZOPA A1 15.6-inch portable monitor, detailing setup, connections, features, troubleshooting, and recycling information.</p>