

## Oharsea SQN-018

# Oharsea SQN-018 Remote Control Robot Toy User Manual

Model: SQN-018

[Safety](#) [Contents](#) [Overview](#) [Setup](#) [Operation](#) [Charging](#) [Maintenance](#) [Troubleshooting](#) [Specification](#)

## 1. SAFETY INFORMATION

Please read all safety instructions before operating the Oharsea SQN-018 Robot Toy. Failure to follow these instructions may result in injury or damage to the product.

- **Choking Hazard - Small Parts:** This product contains small parts and is not suitable for children under 3 years of age. Adult supervision is recommended for children aged 6-12.
- Do not operate the robot near water or in wet conditions.
- Do not disassemble or modify the robot or remote control.
- Ensure batteries are inserted with correct polarity.
- Remove batteries from the remote control if the toy will not be used for an extended period.

## 2. PACKAGE CONTENTS

Verify that all items are present in the package:

- Oharsea SQN-018 Robot Toy
- Remote Control (requires 2 AAA batteries, not included)
- USB Charging Cable
- Instruction Manual



Image: The Oharsea SQN-018 robot toy, its remote control, and accessories.

### 3. PRODUCT OVERVIEW

The Oharsea SQN-018 is a remote-controlled robot toy designed for interactive play. It features a unique design with LED eyes, tank-like tracks, and various interactive functions.

#### 3.1 Key Features

- **Interactive Functions:** Music, dance, programming, gesture sensing, walkie-talkie.
- **Expressive Eyes:** Large LED eyes with 16 changeable patterns to display emotions.
- **Flexible Movement:** Tank tracks for smooth movement, flexible head and arms.
- **Rechargeable:** Built-in rechargeable battery for the robot.

## Interesting Interactive Features



Image: Overview of the robot's interactive features including music, dance, programming, eye changes, walkie-talkie, and gesture sensing.

### 3.2 Robot Dimensions

The robot measures approximately 4.5 inches in length, 3.5 inches in width, and 4.7 inches in height.



Image: A diagram illustrating the robot's dimensions and the layout of the remote control buttons.

## 4. SETUP

### 4.1 Remote Control Battery Installation

1. Locate the battery compartment on the back of the remote control.
2. Use a small screwdriver to open the battery compartment cover.
3. Insert 2 AAA batteries (not included), ensuring correct polarity (+/-).
4. Replace the battery compartment cover and secure it with the screw.

### 4.2 Initial Robot Charging

Before first use, fully charge the robot's internal battery.

1. Locate the Type-C charging port on the back of the robot, next to the On/Off switch.
2. Connect the provided USB charging cable to the robot's charging port.
3. Connect the other end of the USB cable to a power source (e.g., power adapter, power bank, laptop, car charger).
4. The charging indicator light will illuminate. Charging typically takes about 30 minutes.
5. Once fully charged, disconnect the charging cable.

## High-Speed Recharge



Power Adapter



Power Bank



Laptop



Car Charger



Image: The robot's Type-C charging port and On/Off switch, with illustrations of compatible power sources like power adapters, power banks, laptops, and car chargers.

## 5. OPERATING INSTRUCTIONS

### 5.1 Power On/Off

- To power on the robot, slide the On/Off switch on its back to the 'On' position.
- To power on the remote control, press the ON/OFF button.
- To power off, reverse the steps.

### 5.2 Basic Movement

Use the joysticks on the remote control for basic navigation:

- **Forward:** Push the left joystick forward.
- **Backward:** Pull the left joystick backward.
- **Left Turn:** Short press the left turn button on the remote.
- **Right Turn:** Short press the right turn button on the remote.
- **360° Rotation:** Long press the left turn button for left rotation, or long press the right turn button for right rotation.

## Easy to Control

Forward/Backward/Left Turn/Right Turn/360°Rotation



Image: Two robots demonstrating forward/backward movement and 360-degree rotation capabilities.

### 5.3 Music and Dance Functions

- **Music Switch:** Short press the music switch button on the remote control to play different melodies.
- **Mute Button:** Long press the music switch button to mute the robot's sound.

### 5.4 Changeable Eyes Function

- **Eye Pattern Change:** Short press the eye pattern change button on the remote control to cycle through 16 different eye patterns.
- **Auto Switching:** Long press the eye pattern change button to enable automatic cycling through eye patterns.

# Interactive Remote Control Robot

16 Eye Variations Patterns

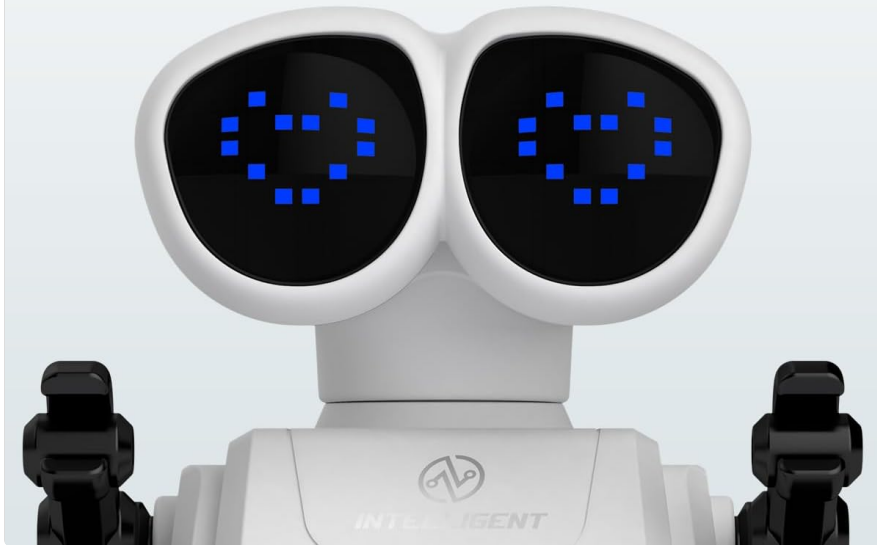
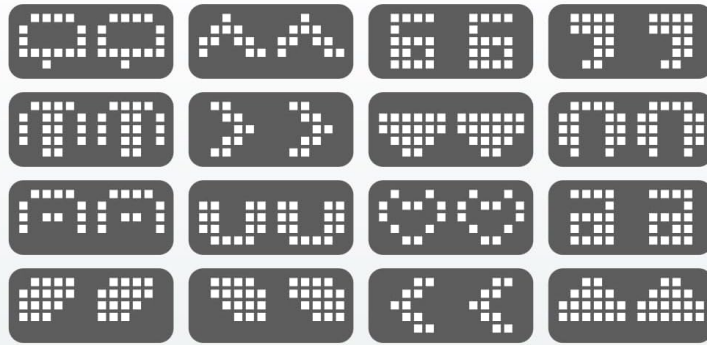
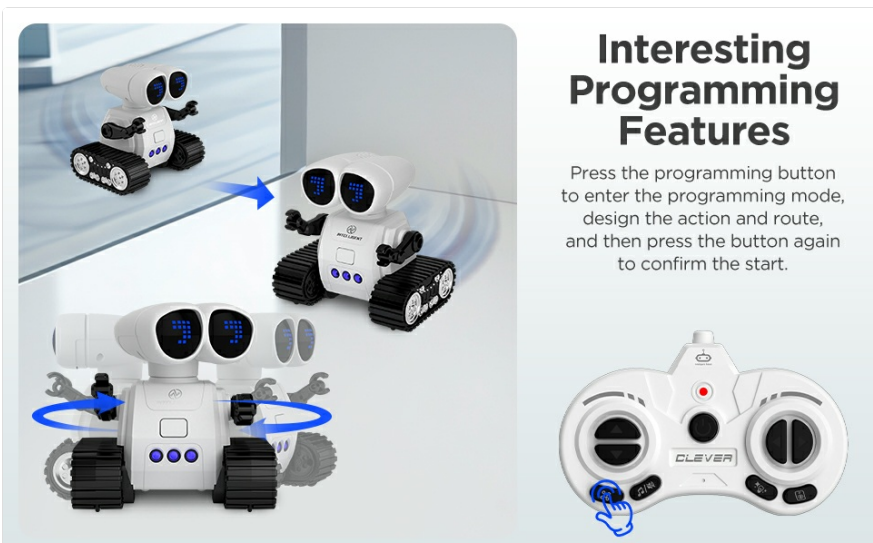


Image: A visual representation of the 16 distinct eye pattern variations the robot can display.

## 5.5 Programming Motion

The robot can be programmed to perform a sequence of actions.

1. Press the programming motion button on the remote control to enter programming mode.
2. Use the remote control to input the desired sequence of movements (e.g., forward, turn left, backward).
3. Press the programming motion button again to confirm the sequence and start execution.



## Interesting Programming Features

Press the programming button to enter the programming mode, design the action and route, and then press the button again to confirm the start.

Image: The robot executing a series of programmed movements, demonstrating its programming capabilities.

## 5.6 Gesture Sensing

Control the robot with hand gestures.

1. Short press the robot's chest button to activate gesture sensing mode.
2. Use hand gestures in front of the robot's sensor to command it to move forward, backward, left, or right.

## Ideal Gifts for Kids



Image: A child demonstrating how to control the robot using hand gestures in front of its chest sensor.

### 5.7 Walkie-Talkie Function

Engage in two-way communication using the robot and remote control.

1. Long press the intercom button on the remote control or the robot's body buttons to initiate conversation. Note: Both buttons cannot be long-pressed simultaneously.
2. If the robot is in gesture sensing mode, exit that mode before using the intercom function.
3. Release the button to use the remote control directly for other functions.

## Great Bonding Time with Your Kids



- ① Long press the remote control intercom button or the robot body buttons can carry on the conversation (both can not be long pressed at the same time)  
Note: If the robot is in sensing mode, you need to exit and then long press the intercom.
- ② Release the button to use the remote control directly

Image: An adult and child engaging with the robot, illustrating the use of the walkie-talkie function for interactive communication.

## 6. CHARGING

The robot is equipped with a rechargeable Lithium Polymer battery. A full charge provides approximately 90 minutes of play time.

- Use only the provided USB charging cable.
- Connect the cable to the robot's Type-C port and a compatible USB power source.
- Charging time is approximately 30 minutes.
- Do not overcharge the battery. Disconnect once charging is complete.

## 7. MAINTENANCE

- **Cleaning:** Wipe the robot and remote control with a soft, dry cloth. Do not use harsh chemicals or abrasive cleaners.
- **Storage:** Store the robot and remote control in a cool, dry place away from direct sunlight when not in use.
- **Battery Care:** Remove AAA batteries from the remote control if storing for extended periods to prevent leakage.

## 8. TROUBLESHOOTING

Problem	Possible Cause	Solution
Robot does not turn on.	Robot battery is low or depleted.	Charge the robot's battery using the USB cable.
Remote control does not work.	Remote control batteries are low or incorrectly installed.	Replace AAA batteries in the remote control, ensuring correct polarity.
Robot does not respond to commands.	Robot and remote control are not paired or out of range.	Ensure both devices are powered on and within operating range. Power cycle both devices.
Gesture sensing not working.	Gesture sensing mode not activated or sensor is obstructed.	Short press the robot's chest button to activate gesture sensing. Ensure no obstructions are blocking the sensor.
Walkie-talkie function not clear or not working.	Interference or distance. Robot might be in another mode.	Ensure robot is not in gesture sensing mode. Reduce distance between robot and remote. Check for environmental interference.

## 9. SPECIFICATIONS

- **Model Number:** SQN-018
- **Product Dimensions:** 4.5 x 3.5 x 4.7 inches
- **Item Weight:** 14 ounces
- **Manufacturer Recommended Age:** 6 - 12 years
- **Robot Battery:** 1 Lithium Polymer battery (included)
- **Remote Control Battery:** 2 AAA batteries (not included)
- **Charging Time:** Approximately 30 minutes
- **Play Time:** Approximately 90 minutes

## 10. WARRANTY AND SUPPORT

For any questions, concerns, or support needs regarding your Oharsea SQN-018 Robot Toy, please contact the seller or Oharsea customer service. Specific warranty details may vary; please refer to your purchase documentation or contact the seller for more information.

Manufacturer: Oharsea