

[Manuals.plus](#) /

> [MHW-3BOMBER](#) /

> MHW-3BOMBER 58mm WDT Tool Espresso User Manual

MHW-3BOMBER T5849-OS

MHW-3BOMBER 58mm WDT Tool User Manual

Model: T5849-OS | Brand: MHW-3BOMBER

INTRODUCTION

This user manual provides comprehensive instructions for the MHW-3BOMBER 58mm WDT Tool, designed to enhance espresso preparation by ensuring accurate and fast coffee ground distribution. This tool is compatible with various 58mm espresso machine portafilters, including Breville (BES980XL, BES920XL, BES900XL), Gaggia (Classic, Pro, Evo), Bezzera machines, and all E61 machines (ECM, Rancilio, Rocket, VBM, etc.).

INCLUDED COMPONENTS

- 1 x MHW-3BOMBER 58mm Espresso WDT Tool
- 6 x Replacement Needles
- 1 x User Manual

SETUP AND INITIAL ADJUSTMENT

The MHW-3BOMBER WDT Tool is designed for ease of use and quick setup. Before first use, it is recommended to adjust the needle depth to suit your specific portafilter basket.

Adjusting Needle Depth

1. **Loosen the Adjustment Disc:** Rotate the adjustment disc counter-clockwise to loosen it. This disc is located just below the main handle and above the needle assembly.
2. **Set Stirring Depth:** Based on the capacity and depth of your portafilter basket, rotate the threaded rod to adjust how deep the needles will stir the coffee grounds. Ensure the needles do not scrape the bottom of the basket excessively.
3. **Tighten the Adjustment Disc:** Once the desired depth is set, rotate the adjustment disc clockwise to secure it firmly in place.

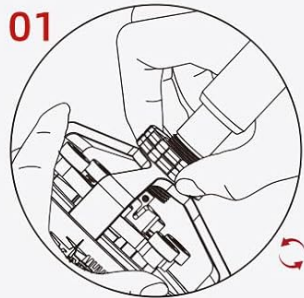
Note: The centrifugal force generated during the tool's rotation is designed to effectively disperse coffee grounds even if the needles do not reach the absolute bottom of the basket. This will not negatively affect the taste of your coffee.

Adjustable Depth

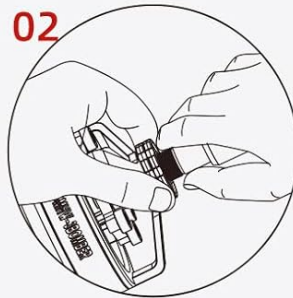
Adjustable according to the capacity of the Basket

 **Adjust clockwise**
to increase stirring depth

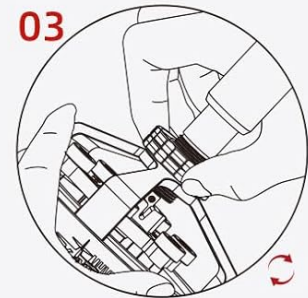
 **Adjust counterclockwise**
to reduce stirring depth



Counterclockwise loosen
the adjustment disc



According to the depth of the
basket, rotate the Threaded
Rod Adjust the Stirring Depth



Adjustment ends
Tighten the adjustment
disc clockwise

Image: Step-by-step guide for adjusting the needle depth of the WDT tool.

OPERATION

The MHW-3BOMBER WDT Tool utilizes a unique design for efficient and even distribution of coffee grounds, which is crucial for optimal espresso extraction.

Using the WDT Tool

- 1. Prepare your Portafilter:** Ensure your 58mm portafilter basket is filled with freshly ground coffee.
- 2. Position the Tool:** Place the MHW-3BOMBER WDT Tool directly onto the portafilter basket. The built-in 10 magnets at the base will ensure precise adsorption and prevent shifting during distribution.
- 3. Activate Distribution:** Gently press down on the handle. This action activates the screw rod, which drives a one-way bearing to rotate the 14 x 0.25mm churning needles. The needles are spaced at 1.58mm to efficiently disperse coffee grounds and break up clumps.
- 4. Observe Distribution:** The tool will quickly and evenly distribute the coffee grounds, improving extraction speed and taste.

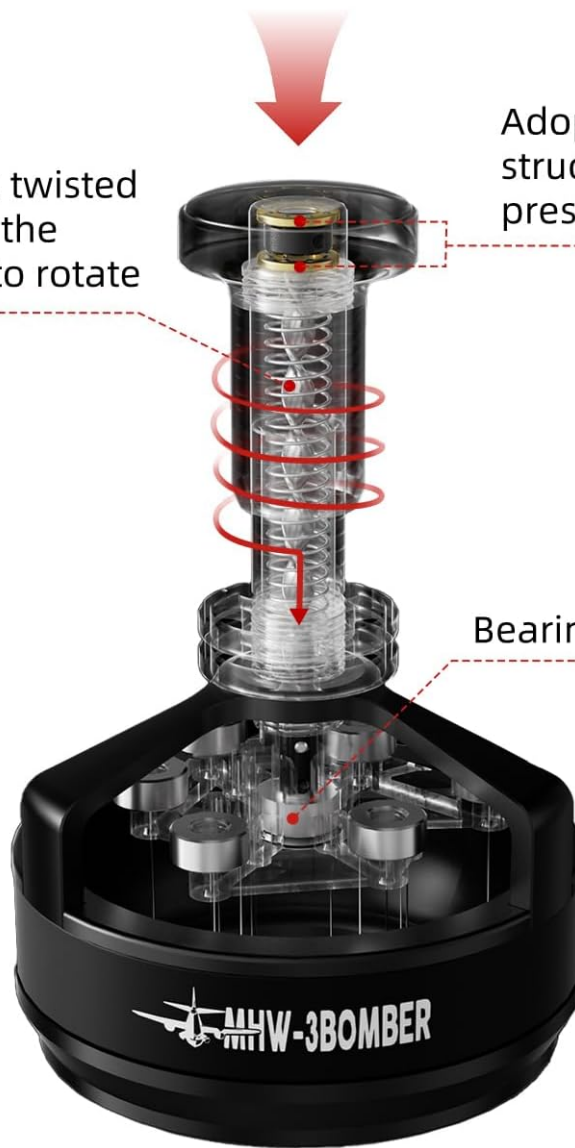
5. **Remove and Tamp:** Once distribution is complete, lift the tool from the portafilter. Your coffee bed is now ready for tamping.

Efficient Powder Dispersion Saving Time & Effort

Press down on the twisted screw rod to drive the one-way bearing to rotate

Adopts dual-bearing structure, ensures smooth pressing

Bearing rotates clockwise



Won the 2024
MUSE Silver Award



Won the 2024
London Design Gold Award

Image: Internal mechanism and efficient powder dispersion.

Built-in 10 Magnets

Accurate positioning, precise adsorption



Image: Demonstrating the magnetic base and anti-slip silicone ring.

58MM WDT Tool Compatible Various Types of 58mm/58.5mm Portafilter



BREVILLE(BES980XL, BES920XL, BES900XL)
GAGGAI(CLASSIC, PRO, EVO)
BEZZERA AND E61 ALL MACHINES
ECM, RANCILIO, ROCKET, VBM, AND MORE.



Image: Compatibility with various 58mm portafilters.

MAINTENANCE

Proper maintenance ensures the longevity and optimal performance of your MHW-3BOMBER WDT Tool.

- **Cleaning:** After each use, gently brush off any residual coffee grounds from the needles and the base. A soft, dry cloth can be used to wipe down the aluminum alloy body. Avoid using abrasive cleaners or submerging the tool in water.
- **Needle Replacement:** The tool comes with 6 replacement needles. If any needles become bent or damaged, they can be replaced. Refer to the "Included Components" section for the quantity of spare needles.
- **Storage:** The stirring needles can be stored within the one-piece base of the tool, eliminating the need for separate storage. This integrated design makes it easy to access and keeps the needles protected. When storing on a countertop, ensure no pressure is applied to the top of the tool to prevent accidental bending or deformation of the needles.

Integrate Design for Convenient Storage

The stirring needles can be stored in this one-piece base, eliminating the need for separate storage, easy to access

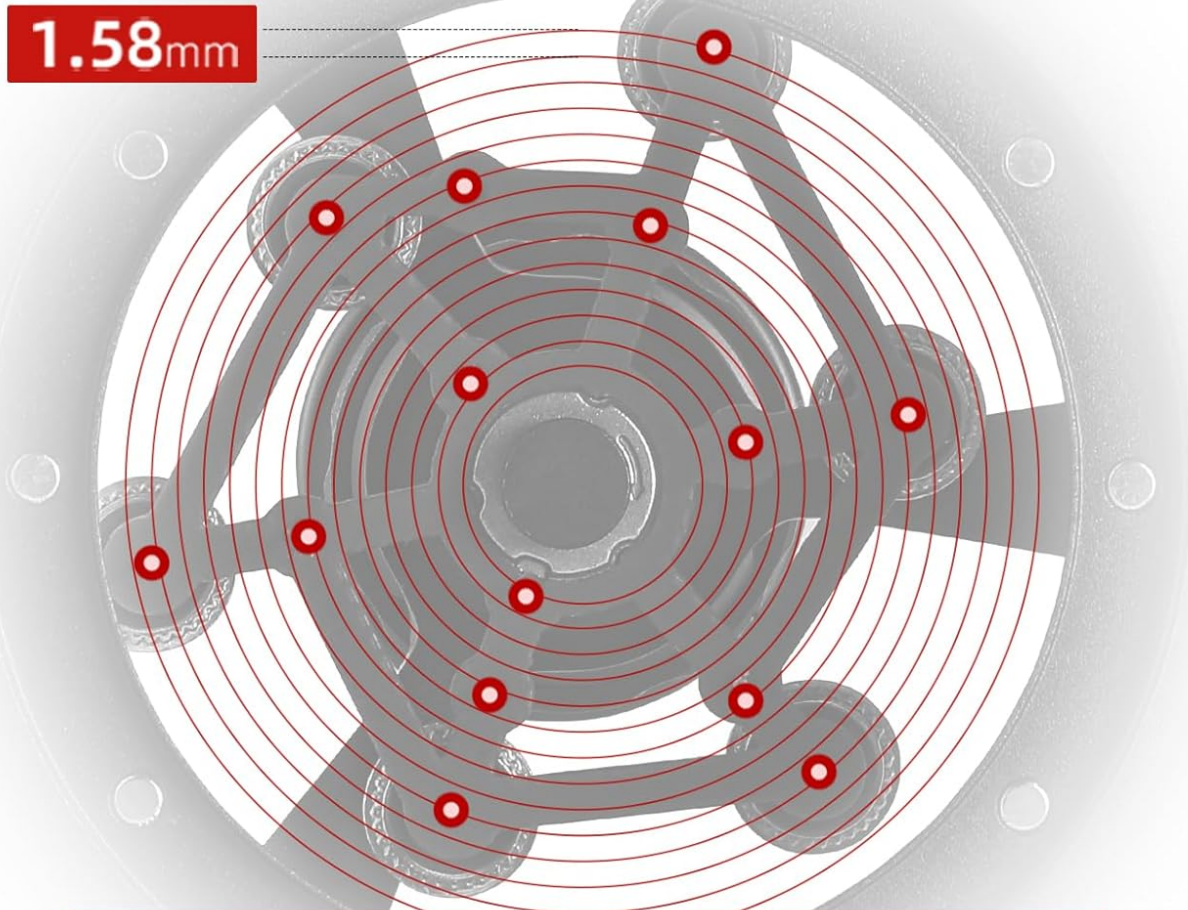


Warm tips: When placed on the countertop, please do not press down, so as to avoid bending and deformation of the needle and damage.

Image: Integrated design for convenient storage of needles.

Efficient Clump Dispersal

14 stirring needles of 0.25 mm and the stirring needles disperse the powder evenly along 14 tracks with a spacing of 1.58 mm between the tracks.



Comes with 6 spare needles



Image: Detail of the 14 stirring needles and included spare needles.

TROUBLESHOOTING

Problem	Possible Cause	Solution
Needles not reaching deep enough into the coffee bed.	Incorrect needle depth adjustment for the basket size.	Adjust the needle depth by loosening the adjustment disc and rotating the threaded rod clockwise to increase depth. Tighten the disc once set. Refer to the "Setup and Initial Adjustment" section.
Needles appear bent or deformed.	Excessive force during operation or improper storage.	Replace damaged needles with the provided spare needles. Ensure gentle operation and store the tool properly to prevent damage.

Problem	Possible Cause	Solution
Tool does not rotate smoothly.	Accumulation of coffee grounds or debris in the mechanism.	Clean the tool thoroughly, especially around the needle assembly and the central shaft, to remove any obstructions.

SPECIFICATIONS

Feature	Detail
Brand	MHW-3BOMBER
Model Name	58mm Cyclone WDT Tool
Item Model Number	T5849-OS
Color	Black
Material	Durable Aluminum Alloy, Corrosion-resistant SUS304 Steel
Needle Quantity	14 (0.25mm thickness)
Needle Spacing	1.58mm
Operation Mode	Manual (Press-Type Rotary)
Magnetic Base	Yes (10 built-in magnets)
Product Dimensions	3.35 x 3.35 x 5.12 inches
Item Weight	10.6 ounces

WARRANTY AND SUPPORT

MHW-3BOMBER is committed to providing high-quality, professional coffee equipment. For any concerns or dissatisfaction regarding your WDT Tool, please feel free to contact our customer service. We strive to ensure your complete satisfaction. Please refer to your purchase documentation or the official MHW-3BOMBER website for specific warranty terms and contact information.

© 2024 MHW-3BOMBER. All rights reserved.
For further assistance, please visit the [MHW-3BOMBER Store on Amazon](#).