



Manuals.plus /

› YEXEXINM /

› YEXEXINM 5 Tier Wall Shelf Unit Instruction Manual (White)

YEXEXINM 5 Tier Wall Shelf Unit

YEXEXINM 5 Tier Wall Shelf Unit Instruction Manual

Model: 5 Tier Wall Shelf Unit (White)

INTRODUCTION

Thank you for purchasing the YEXEXINM 5 Tier Wall Shelf Unit. This manual provides detailed instructions for assembly, installation, and maintenance to ensure safe and proper use of your new wall shelf. Please read this manual thoroughly before beginning assembly and retain it for future reference.

IMPORTANT SAFETY INFORMATION

- Always follow the assembly instructions carefully.
- Do not overload shelves. Refer to specifications for weight limits.
- Ensure the shelf is securely mounted to the wall before use. Improper installation can lead to injury or damage.
- Keep the shelf away from direct heat sources and excessive moisture.
- Do not place heavy or sharp objects on the shelves in a manner that could cause instability or damage.

PACKAGE CONTENTS

Before assembly, please verify that all components listed below are present and undamaged. If any parts are missing or damaged, please contact customer support.

- 1x 5 Tier Wall Shelf Unit (main wooden structure)
- Hardware kit (screws, wall anchors, screwdriver)

Product Accessories



Figure 1: Included Hardware Components. This image displays the various screws, wall anchors, and a screwdriver provided for assembly and installation.

SPECIFICATIONS

Feature	Detail
Brand	YEXEXINM
Model Name	5 Tier Wall Shelf Unit
Model Number	sfdgdfgdf
Color	White
Material	Wood (Composite wood)
Dimensions (Overall)	31 inches (Height) x 7.2 inches (Width) x 5.5 inches (Depth)
Number of Shelves	5
Installation Type	Wall Mount
Assembly Required	Yes
Item Weight	1 pound (approximately 16 ounces)

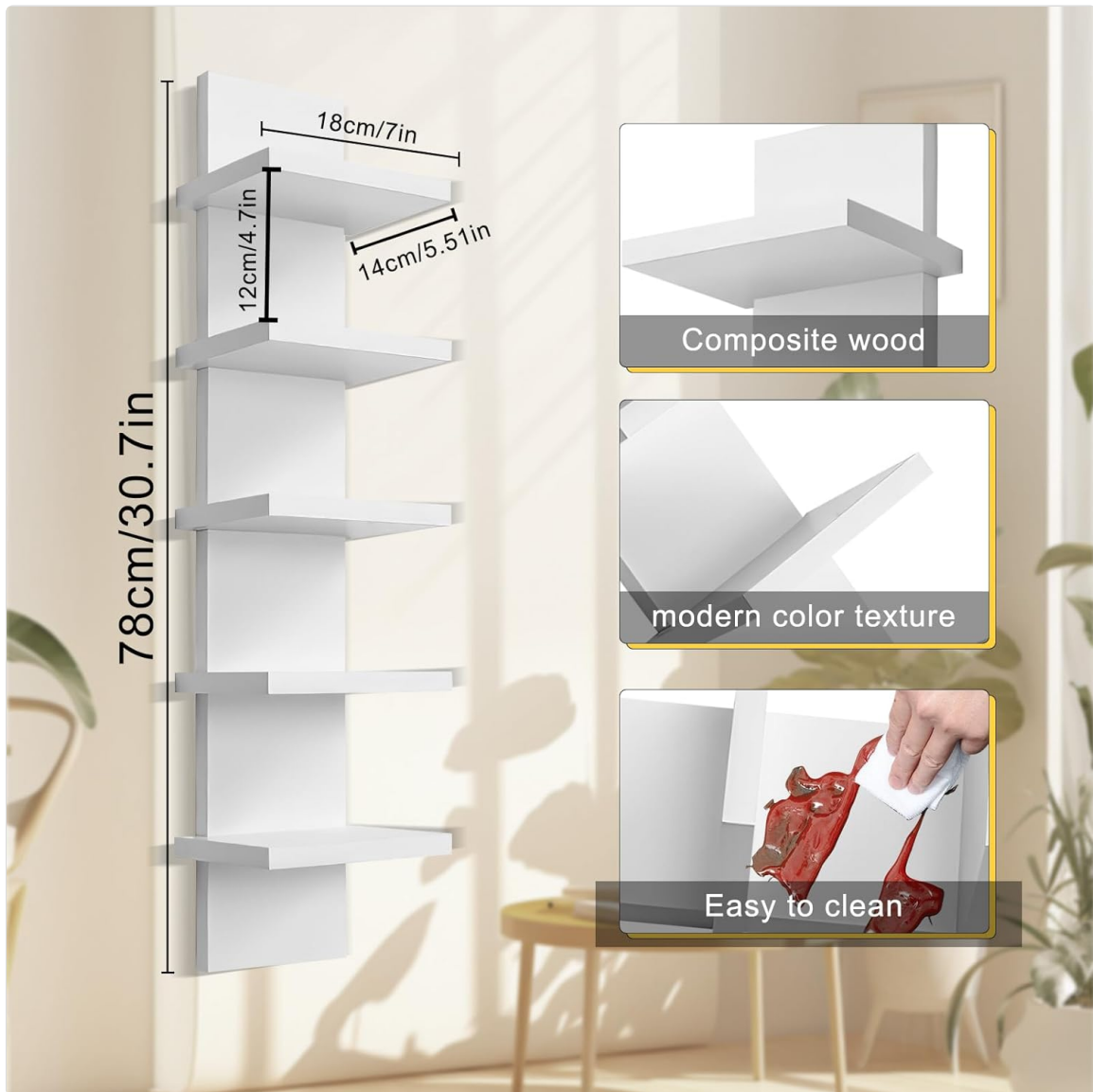


Figure 2: Product Dimensions and Material. This image illustrates the overall dimensions of the shelf unit and highlights its composite wood material and easy-to-clean finish.

SETUP AND ASSEMBLY INSTRUCTIONS

Follow these steps carefully to assemble and mount your 5 Tier Wall Shelf Unit.

Step 1: Prepare the Shelf Unit

1. Unpack all components and verify against the "Package Contents" section.
2. Identify the main back panel and the five individual shelf pieces.
3. Align the shelves with the pre-drilled holes on the main back panel.
4. Using the provided screws and screwdriver, securely attach each shelf to the back panel.
Ensure all screws are tightened to prevent wobbling.

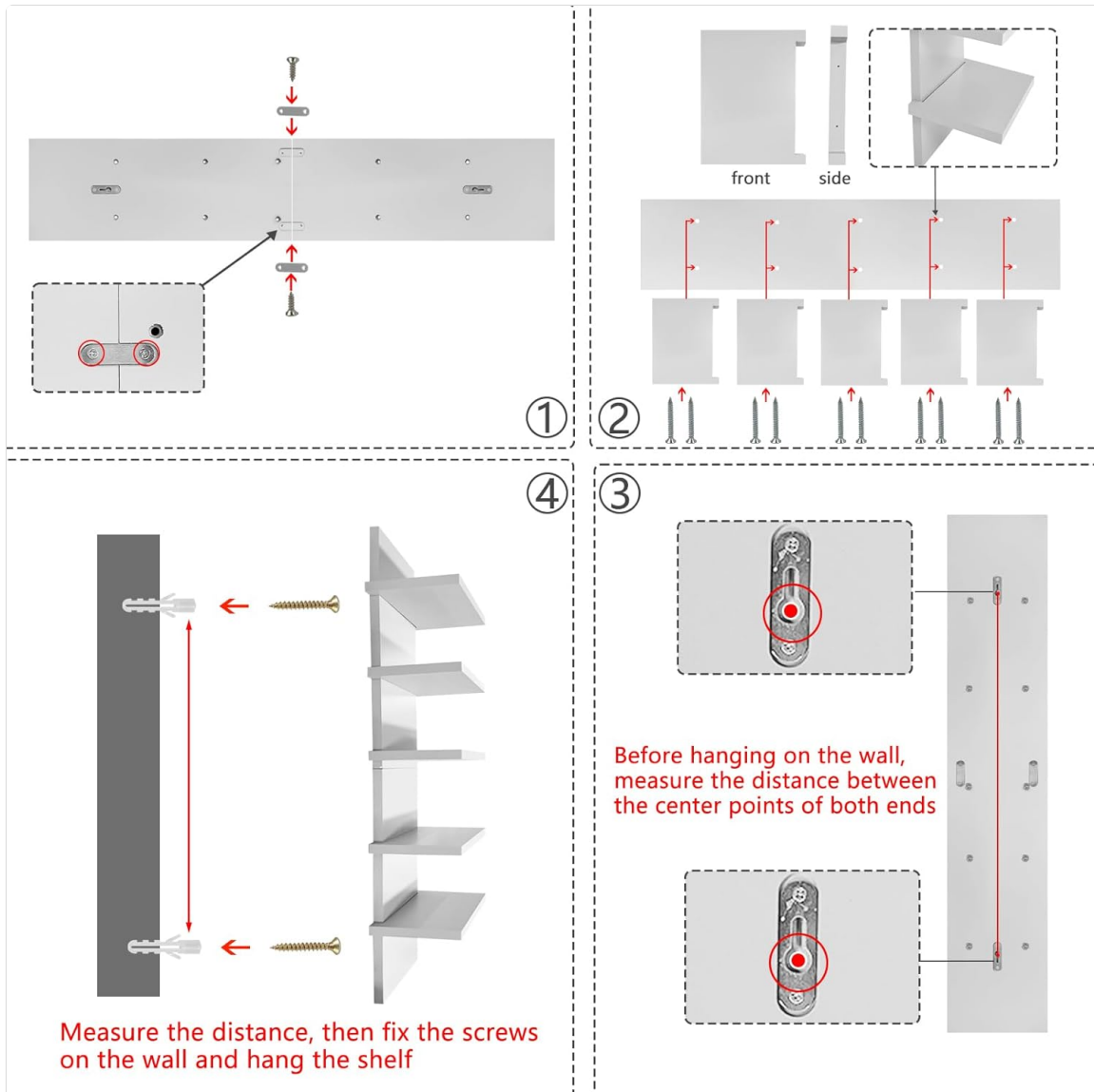


Figure 3: Assembly Steps. This diagram illustrates the process of attaching the shelves to the main back panel and the subsequent wall mounting procedure.

Step 2: Wall Mounting

5. Choose a suitable location on your wall. Ensure the wall material can support the shelf's weight and any items placed on it.
6. Measure the distance between the center points of the mounting holes on the back of the assembled shelf unit.
7. Mark these measured points on your wall using a pencil. Use a level to ensure the marks are perfectly horizontal.
8. Drill pilot holes at the marked locations. Insert the provided wall anchors into the pilot holes.

9. Align the shelf unit's mounting holes with the installed wall anchors. Insert the long screws through the shelf's mounting holes and into the wall anchors.
10. Tighten the screws until the shelf unit is firmly secured against the wall. Do not overtighten.



Figure 4: Secure Wall Mounting. This image demonstrates the shelf unit fixed to the wall using expansion screws, ensuring stability.

OPERATING INSTRUCTIONS

The YEXEXINM 5 Tier Wall Shelf Unit is designed for organizing and displaying various small items. To ensure optimal performance and longevity:

- **Weight Distribution:** Distribute weight evenly across the shelves. Avoid placing all heavy items on a single shelf or one side of the unit.
- **Maximum Load:** While durable, avoid overloading the shelves. The exact maximum weight capacity per shelf is not specified, but it is intended for light decorative items, books, and small plants.
- **Placement:** This shelf is suitable for bedrooms, living rooms, and other indoor spaces. Avoid areas with high humidity or direct sunlight that could affect the wood finish.
- **Intended Use:** Use the shelves for displaying decorative items, small books, souvenirs,

cosmetics, or small potted plants.



Figure 5: Shelf in Use. This image shows the shelf unit holding various decorative items, demonstrating its intended use in a home environment.

MAINTENANCE

Proper care will extend the life and appearance of your wall shelf unit.

- **Cleaning:** Wipe the surface with a dry, soft cloth. For stubborn marks, a slightly damp cloth can be used, followed immediately by a dry cloth. Avoid abrasive cleaners or harsh chemicals.
- **Inspection:** Periodically check all screws and mounting hardware to ensure they remain tight and secure. Retighten if necessary.
- **Environmental Conditions:** Protect the shelf from extreme temperature changes and humidity, which can cause wood to warp or crack.

TROUBLESHOOTING

Problem	Possible Cause	Solution
Shelf unit is wobbly after assembly.	Screws are not fully tightened.	Ensure all screws connecting the shelves to the back panel are tightened securely.
Shelf unit feels loose on the wall.	Wall mounting screws are not tight, or wall anchors are not properly installed.	Retighten wall mounting screws. If the issue persists, ensure wall anchors are correctly seated in the wall. Consider using stronger anchors if the wall material is soft.
Missing parts or damaged components upon arrival.	Manufacturing or shipping error.	Contact YEXEXINM customer support immediately for assistance.

WARRANTY AND CUSTOMER SUPPORT

YEXEXINM is committed to providing high-quality products and an excellent user experience. If you encounter any issues or have questions regarding your 5 Tier Wall Shelf Unit, please contact our customer support team.

We aim to resolve any concerns within 6 hours of contact. Please provide your purchase details and a description of the issue when reaching out for faster service.

For support, please visit the [YEXEXINM Store on Amazon](#) or refer to your purchase platform for contact information.
