

## Manuals+

[Q & A](#) | [Deep Search](#) | [Upload](#)

manuals.plus /

> [BQMAX](#) /

> [BQMAX Flame Broiler Kit Instruction Manual for Pit Boss Pellet Grills \(PB1000, PB1100, PB1150, PB1600 Series\)](#)

### BQMAX Flame Broiler Kit for Pit Boss PB1000/PB1100/PB1150/PB1600 Series

# BQMAX Flame Broiler Kit Instruction Manual

For Pit Boss Pellet Grills: PB1000, PB1100, PB1150, PB1600 Series

## 1. OVERVIEW

---

This manual provides instructions for the installation, usage, and maintenance of the BQMAX Flame Broiler Kit replacement parts. This kit is designed to replace the flame broiler slide cover and bottom components in compatible Pit Boss pellet grills, restoring optimal grilling performance and grease management.

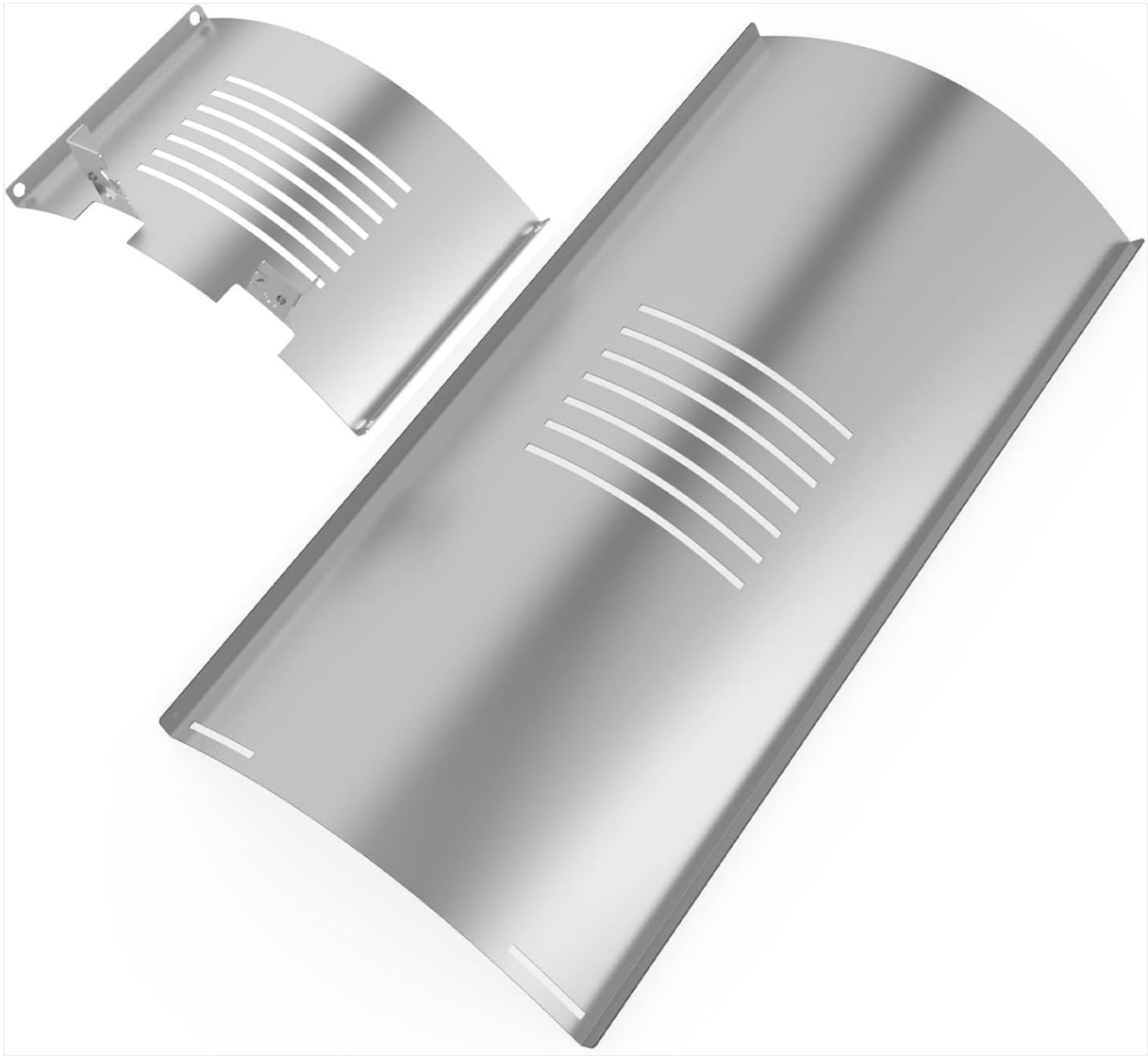


Image 1.1: The BQMAX Flame Broiler Kit, consisting of the flame broiler bottom and the flame broiler slide cover.

## 2. COMPATIBILITY

---

The BQMAX Flame Broiler Kit is compatible with various Pit Boss Pellet Grill models. Please verify your grill model against the list below to ensure proper fitment.

- Pit Boss PB1000 Series: PB1000T4 (Traditions 4), PB1000D3, PB1000R2, Austin XL-Onyx (PB1000NX), Sportsman 1000 (PB1000SP), PB1000XL, PB1000SC3
- Pit Boss PB1100 Series: PB1100PS1, Sportsman 1100 (PB1100SP)
- Pit Boss PB1150 Series: PB1150PS2, PB1150PS3, Navigator 1150 (PB1150G)
- Pit Boss PB1600 Series: PB1600PS1, PB1600PSE, PB1600PS2

# Compatible Models for Pit Boss



✔ For PB1000 Series



✔ For PB1100 Series



✔ For PB1150 Series



✔ For PB1600 Series



Image 2.1: Visual representation of compatible Pit Boss grill series.

## 3. PACKAGE CONTENTS

Upon unpacking, ensure all components are present and undamaged:

- 1 x Flame Broiler Bottom
- 1 x Flame Broiler Slide Cover

## 4. SPECIFICATIONS

Component	Dimensions (L x W)
Flame Broiler Bottom	32 inches x 15 1/2 inches
Flame Broiler Slide Cover	15 1/2 inches x 10 inches

**Material:** Heavy-duty steel, designed for durability, heat resistance, and corrosion resistance.

# Product Size

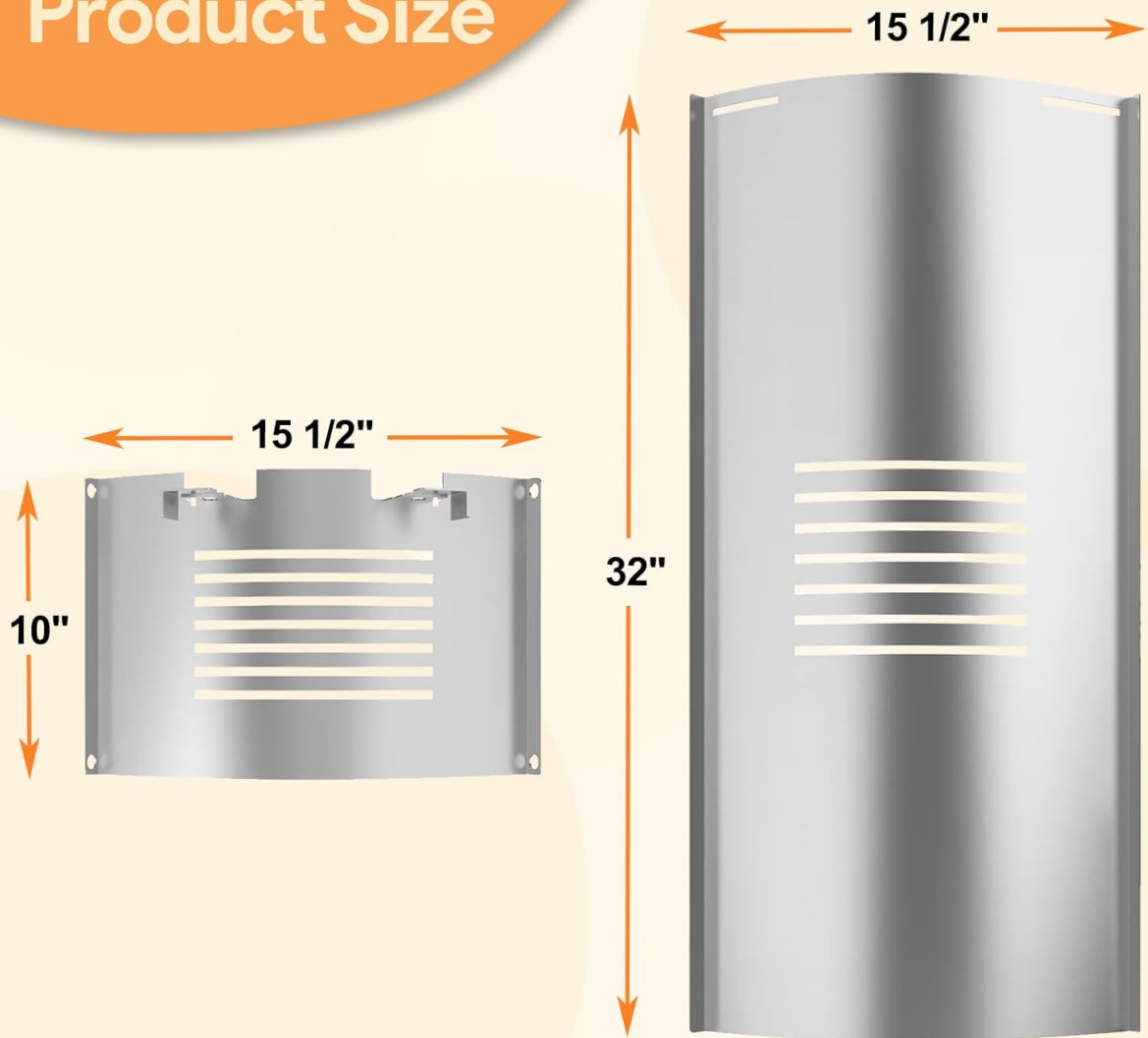


Image 4.1: Dimensions of the Flame Broiler Kit components.



Image 4.2: Key material properties of the Flame Broiler Kit.

## 5. INSTALLATION INSTRUCTIONS (SETUP)

Follow these steps to install the BQMAX Flame Broiler Kit:

1. **Safety First:** Ensure your Pit Boss pellet grill is completely cool and unplugged from its power source before beginning any installation or maintenance.
2. **Remove Existing Components:** Carefully remove the existing flame broiler bottom and slide cover from your grill. Refer to your grill's original manual for specific removal procedures if needed.
3. **Position Flame Broiler Bottom:** Place the new BQMAX Flame Broiler Bottom into the designated area within your grill's firebox. Ensure it sits securely and correctly.
4. **Install Slide Cover:** Insert the Flame Broiler Slide Cover onto the bottom piece. The slide cover is designed with left and right adjustable levers for proper positioning and movement. Ensure these levers engage correctly with the bottom piece.
5. **Verify Fitment:** Gently slide the cover back and forth to ensure smooth operation and proper alignment. Confirm that all parts are securely in place before operating the grill.

# Easy to Install

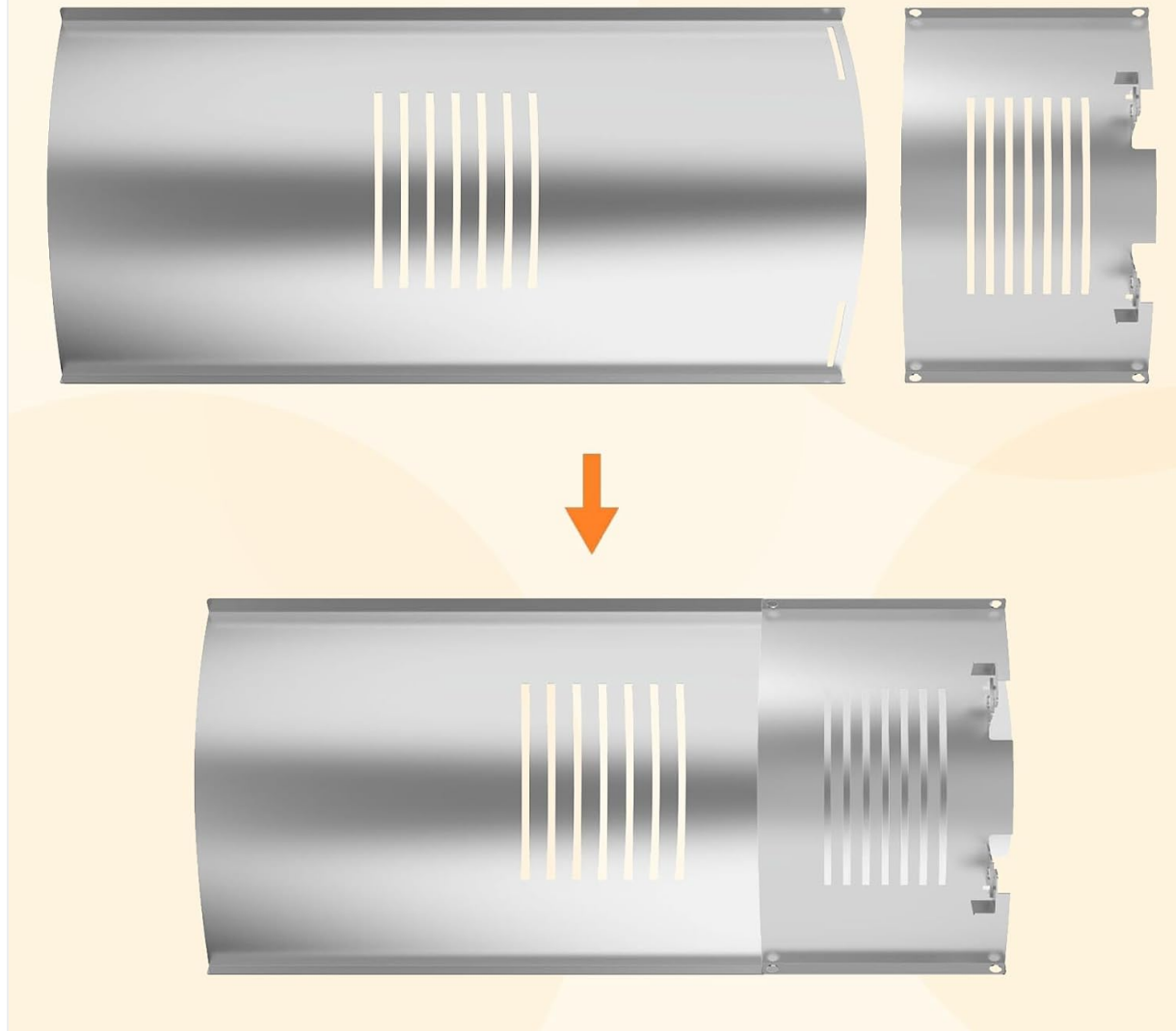


Image 5.1: Installation diagram for the Flame Broiler Kit.

## 6. USAGE (OPERATING)

The flame broiler kit allows for versatile cooking by controlling direct and indirect heat:

- **Direct Flame Access:** Slide the cover open to expose the flame for searing meats directly over the heat source.
- **Indirect Heat/Smoking:** Slide the cover closed to block direct flame, allowing for indirect cooking and smoking.

The design also facilitates efficient grease collection, directing drippings away from the flame for safer operation and easier cleanup.

## Replacement Parts for Pit Boss PB1100 Series



Image 6.1: Installed Flame Broiler Kit within a Pit Boss grill.



## Replacement Parts for Pit Boss PB1000 PB1100 PB1150 PB1600 Series

Image 6.2: Flame Broiler Kit in use with food cooking.

## 7. MAINTENANCE

Regular maintenance ensures the longevity and performance of your flame broiler kit:

- **Cleaning:** After each use, allow the grill to cool completely. Remove the flame broiler components and clean off any accumulated grease or food debris. Use a grill brush or scraper for stubborn residue.
- **Inspection:** Periodically inspect the components for any signs of wear, corrosion, or damage. Replace parts if significant damage is observed to maintain safe and efficient operation.

## 8. SAFETY INFORMATION

**WARNING:** The flame broiler kit components can become extremely hot during operation. Always exercise caution and follow these safety guidelines:

- Always ensure the grill is cool and unplugged before installing, removing, or cleaning the flame broiler components.
- Wear appropriate protective gloves when handling hot or sharp grill components.

- Keep flammable materials away from the grill during operation.
- Ensure adequate ventilation when using your pellet grill.
- Do not operate the grill with damaged or improperly installed components.

**Flammability Warning:** This product is flammable if exposed to open flames. Keep away from heat sources when not installed in the grill.

## 9. TROUBLESHOOTING

---

If you encounter issues with your BQMAX Flame Broiler Kit, consider the following:

- **Issue:** The replacement part does not fit correctly.
  - **Solution:** Double-check the compatibility list in Section 2 to ensure the kit is designed for your specific Pit Boss model. Verify the dimensions of the parts against the specifications in Section 4.
- **Issue:** The slide cover does not move smoothly.
  - **Solution:** Inspect for any obstructions, debris, or grease buildup that might be impeding movement. Ensure the adjustable levers are properly aligned and engaged with the bottom piece.

## 10. WARRANTY AND SUPPORT

---

BQMAX is committed to providing quality products and a satisfactory shopping experience. If you have any questions, concerns, or require assistance with your Flame Broiler Kit, please contact BQMAX customer support. We aim to provide a fast response within 24 hours.

For further assistance, please refer to the BQMAX brand store on Amazon or contact the seller directly through your purchase platform.