

## Jane 060252 U10

# Jané Dual Ergonomic Baby Carrier Instruction Manual

Model: 060252 U10

Brand: Jane

## 1. INTRODUCTION

---

The Jané Dual Ergonomic Baby Carrier is designed to provide comfort and safety for both the child and the wearer. This carrier supports infants from birth, with a minimum weight of 3.5 kg up to a maximum of 15 kg. It offers three distinct carrying positions, an adjustable headrest, and a padded structure for optimal support. Please read this manual thoroughly before using the product to ensure correct and safe operation.



Image: The Jané Dual Ergonomic Baby Carrier in beige, shown with a baby comfortably positioned facing the adult.

## 2. SAFETY INFORMATION

---

Your child's safety is paramount. Always follow these guidelines:

- The Jané Dual Baby Carrier is approved according to European standard EN 13209-2:2015.
- It is recognized by the International Hip Dysplasia Institute as a hip-healthy product.
- Ensure the child's weight is within the recommended range of 3.5 kg to 15 kg.
- Always check all buckles, straps, and adjustments are secure before and during use.
- Ensure the child's airway is clear and unobstructed at all times. Regularly check on the child.

- Never use the carrier for activities that could be dangerous, such as cooking, driving, or operating machinery.
- The adjustable headrest provides cervical support, suitable from birth. Always ensure the headrest is properly adjusted to support the infant's head and neck.



Riconosciuto da International Hip Dysplasia Institute



Image: The carrier provides cervical support and is suitable from birth, as shown with a father carrying his infant.

### 3. PRODUCT OVERVIEW

---

The Jané Dual Baby Carrier features an ergonomic design focused on comfort and proper weight distribution.

#### Key Features:

- **Ergonomic Design:** Ensures a natural and comfortable position for the baby.
- **Adjustable Headrest:** Provides essential head and neck support for newborns and growing infants.
- **Crossed Shoulder Straps:** Distribute the child's weight evenly across the wearer's back, reducing strain.
- **Lumbar Support Belt:** Helps distribute weight to the lumbar area for enhanced wearer comfort.
- **Full Front Opening:** Facilitates easy placement and removal of the child.
- **Soft and Padded Structure:** Made with respectful, soft, and padded materials for the comfort of both baby and wearer.



Image: The ergonomic design and full front opening allow for comfortable and easy use.



Image: The carrier features soft, padded, and respectful fabric for maximum comfort.



Image: Padded straps and a design for better weight distribution enhance wearer comfort.

Image: The carrier offers lumbar protection, is easy to fit, and ensures good load distribution.

## 4. SETUP

Before placing your child in the carrier, ensure it is properly adjusted to your body.

1. **Adjust Waist Belt:** Fasten the waist belt around your natural waist or hips, ensuring it is snug and comfortable. The belt should sit securely to provide lumbar support.
2. **Loosen Shoulder Straps:** Fully loosen the shoulder straps to allow for easy placement of the child.
3. **Prepare for Child Placement:** Open the front panel of the carrier if necessary, using the full front opening feature.
4. **Place Child:** Carefully place your child into the carrier, ensuring their legs are in an ergonomic 'M' position (knees higher than hips) and their back is supported.
5. **Tighten Shoulder Straps:** While supporting your child, pull the shoulder straps to tighten them until the child is snug against your body. The crossed strap design helps distribute weight.
6. **Adjust Headrest:** Adjust the headrest to provide appropriate support for your child's head and neck, especially for newborns.
7. **Final Check:** Ensure all buckles are securely fastened and the child is in a safe, comfortable position with a clear airway.

Image: Adjustable straps and buckles allow for a customized and secure fit.

## 5. OPERATING (CARRYING POSITIONS)

The Jané Dual Baby Carrier offers three versatile carrying positions:

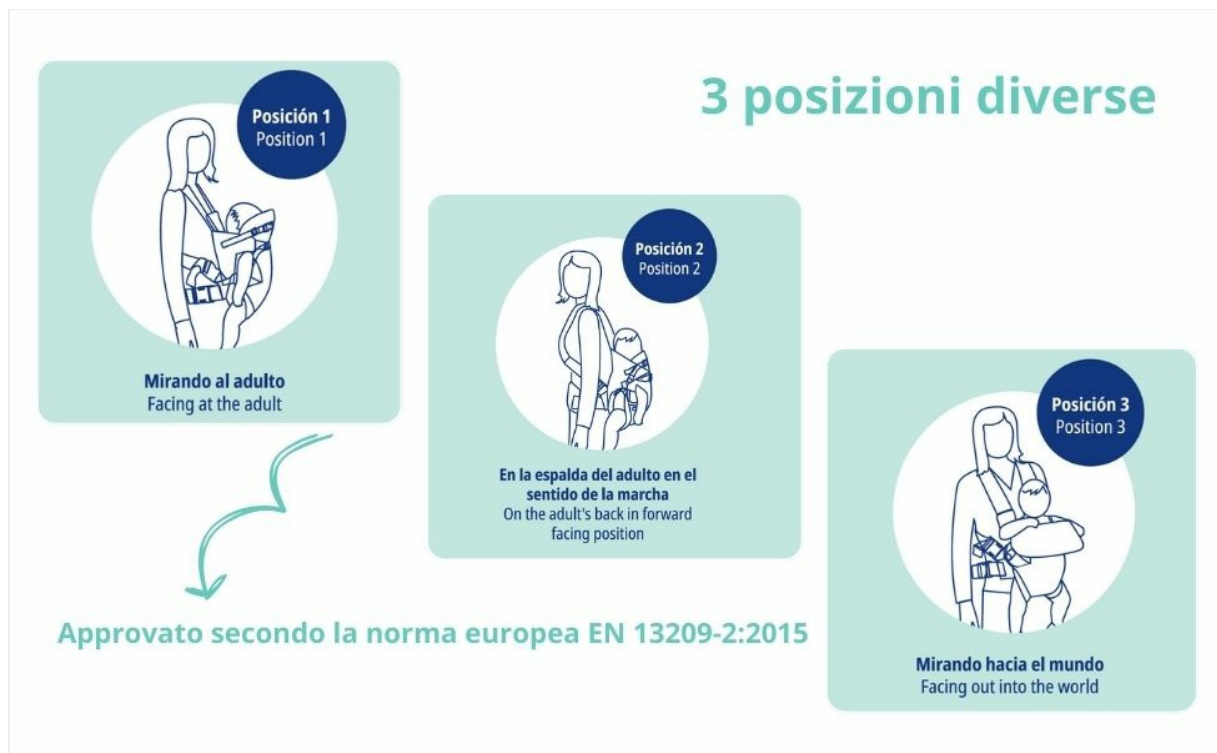


Image: Visual guide to the three carrying positions.

### 1. Position 1: Facing the Adult

This position is ideal for newborns and younger infants, promoting bonding and allowing you to monitor your child closely. Ensure the child's head is well-supported by the adjustable headrest.

### 2. Position 2: On the Carrier's Back

Suitable for older infants and toddlers who have good head and neck control. This position is generally recommended for longer periods of carrying, distributing the weight effectively across your back. Ensure the child is securely placed and comfortable.

### 3. Position 3: Facing the Direction of Travel (Forward-Facing)

This position allows your child to observe their surroundings. It is recommended for brief periods only, for infants with strong head and neck control, and when they are awake and engaged. Always monitor your child for signs of overstimulation or discomfort. Ensure their legs are still in an ergonomic 'M' position.

## 6. MAINTENANCE

Proper care will extend the life of your Jané Dual Baby Carrier.

- **Cleaning:** Hand wash only. Do not machine wash, bleach, tumble dry, iron, or dry clean. Use mild soap and cold water.
- **Drying:** Air dry thoroughly in a shaded area. Do not expose to direct sunlight for prolonged periods.
- **Storage:** Store the carrier in a clean, dry place away from direct sunlight and extreme temperatures when not in use.
- **Inspection:** Regularly inspect all buckles, straps, and fabric for any signs of wear, damage, or loose stitching. Discontinue use if any damage is found.

## 7. TROUBLESHOOTING

If you encounter issues with your Jané Dual Baby Carrier, consider the following:

- **Discomfort for Wearer:** Ensure the waist belt is snug and positioned correctly, and shoulder straps are evenly tightened. The crossed strap design and lumbar support should help distribute weight. Adjust until comfortable.
- **Child Not Comfortable:** Check that the child's legs are in the ergonomic 'M' position, their back is supported, and the headrest is providing adequate neck support. Ensure no fabric is bunched or pressing uncomfortably.
- **Carrier Feels Loose:** Re-tighten all straps, starting with the waist belt, then the shoulder straps. Ensure all buckles are fully engaged.
- **Difficulty Placing/Removing Child:** Utilize the full front opening feature. Practice placement and removal when not in a hurry.

If problems persist, refer to the manufacturer's website or contact customer support.

## 8. SPECIFICATIONS

<b>Product Dimensions (L x W x H)</b>	10 x 27 x 45 cm
<b>Product Weight</b>	800 grams
<b>Minimum Recommended Weight</b>	3.5 Kilograms
<b>Maximum Recommended Weight</b>	15 Kilograms
<b>Age Range Description</b>	Infant (from birth)
<b>Material</b>	Polyester
<b>Care Instructions</b>	Hand wash only
<b>Strap Type</b>	Adjustable Strap
<b>Closure Type</b>	Buckles
<b>Orientation</b>	Front and Back
<b>Model Number</b>	060252 U10
<b>Country of Origin</b>	China



Image: Key dimensions of the Jané Dual Baby Carrier.

## 9. WARRANTY AND SUPPORT

For warranty information, please refer to the documentation included with your purchase or visit the official Jané website. Specific warranty terms may vary by region and retailer.

For customer support, technical assistance, or to inquire about replacement parts, please contact your retailer or visit the Jané official website for contact details.