

[manuals.plus](#) /

› [MHCOZY](#) /

› [MHCOZY WiFi Smart Switch Relay Module \(1CH WIFI Bluetooth\) User Manual](#)

MHCOZY ew124

MHCOZY WiFi Smart Switch Relay Module (1CH WIFI Bluetooth) User Manual

Model: ew124

1. INTRODUCTION

This manual provides comprehensive instructions for the installation, setup, and operation of the MHCOZY 1-Channel WiFi Smart Switch Relay Module (Model ew124). This device enables remote control of electrical appliances via the eWeLink app, and integrates with voice assistants like Amazon Alexa and Google Assistant. It supports both inching and self-locking modes, making it suitable for various home automation applications, including garage door control and lighting.



Figure 1.1: MHCOZY 1-Channel WiFi Smart Switch Relay Module.

2. SAFETY INFORMATION

- **Power Disconnection:** Always disconnect power to the circuit before installing or performing any maintenance on the device. Failure to do so may result in electric shock or damage to the device.
- **Voltage Compatibility:** Ensure the power supply voltage (DC 5-32V) and appliance voltage are within the specified limits for the module and relay.
- **Current Rating:** Do not exceed the maximum current rating of 10A for the relay. Overloading can cause damage or fire.
- **Professional Installation:** If you are unsure about wiring or electrical connections, consult a qualified electrician.
- **Indoor Use:** This device is designed for indoor use. If used outdoors, it must be housed in a waterproof enclosure.

3. PRODUCT OVERVIEW

The MHCOZY WiFi Smart Switch Relay Module is a compact device designed to add smart control capabilities to existing electrical systems. It features a single relay channel with clean contact passive output, meaning it provides a dry contact closure without output voltage.



Figure 3.1: MHCOZY 1-Channel WiFi Smart Switch Relay Module and its internal components, alongside eWeLink app and voice assistant devices.

3.1. Components and Connections

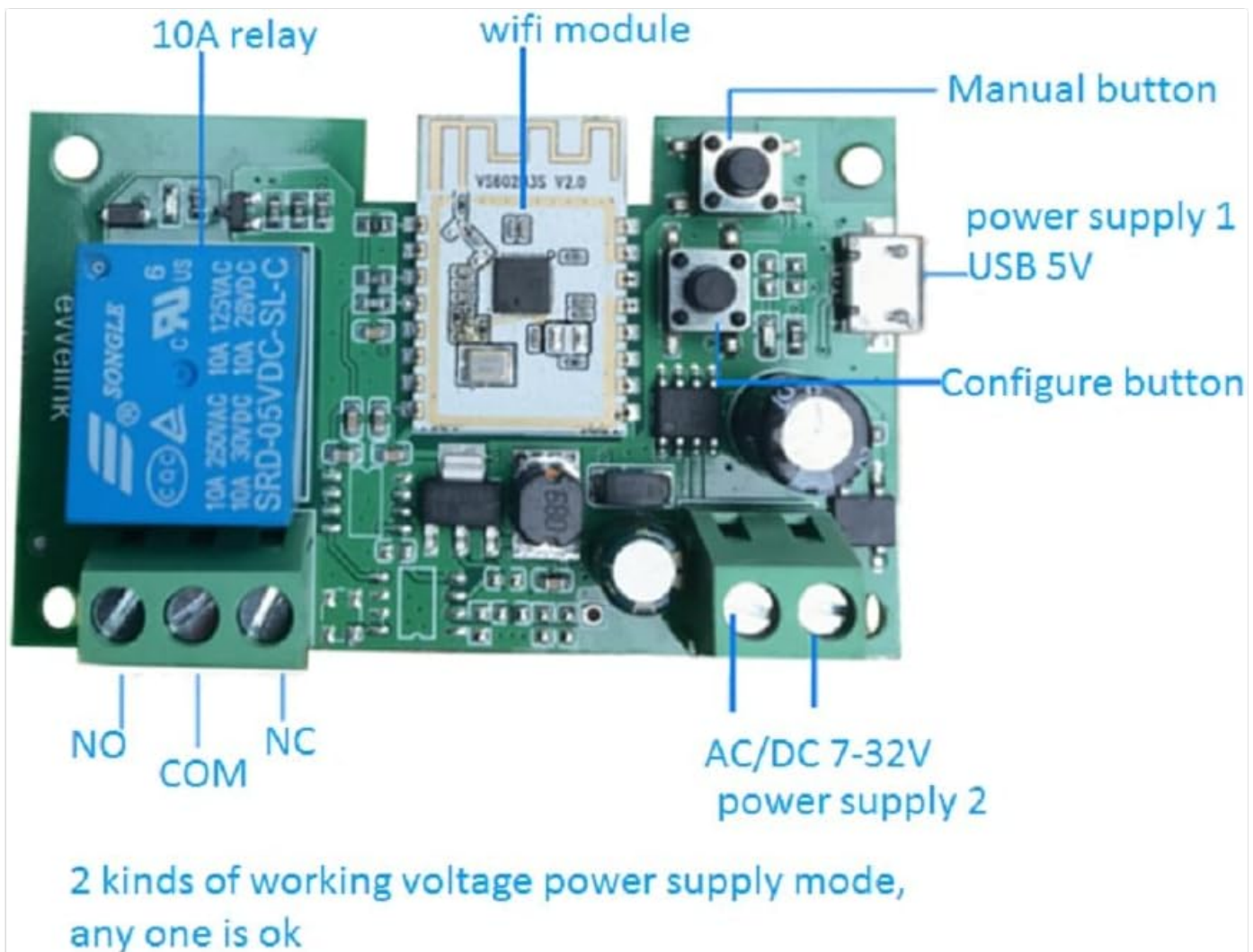


Figure 3.2: Detailed view of the module board, highlighting key components and connection points.

- **Power Supply 1 (USB 5V):** Micro USB port for 5V DC power input.
- **Power Supply 2 (AC/DC 7-32V):** Screw terminals for 7-32V AC/DC power input.
- **Relay Output (NO, COM, NC):** Dry contact terminals for controlling external devices.
 - **NO (Normally Open):** Contact is open when the relay is off, closed when on.
 - **COM (Common):** Common terminal for the relay.
 - **NC (Normally Closed):** Contact is closed when the relay is off, open when on.
- **Manual Button:** Physical button for local control.
- **Configure Button:** Used for pairing the device with the eWeLink app.
- **WiFi Module:** Integrated module for 2.4GHz WiFi and Bluetooth connectivity.
- **10A Relay:** The switching component with a maximum current rating of 10 Amperes.

4. SPECIFICATIONS

Feature	Specification
Model	ew124 (1CH WIFI Bluetooth)
Input Voltage	DC 5V (USB) or AC/DC 7-32V
Relay Type	Clean Contact Passive Output

Feature	Specification
Max. Current	10A
Connectivity	2.4GHz WiFi (802.11 b/g/n), Bluetooth
Operation Modes	Inching (Momentary), Self-locking (Toggle)
Operating Temperature	Up to 70°C
Dimensions	2.68 x 1.57 x 0.67 inches (approx. 68 x 40 x 17 mm)
Weight	1.76 ounces (approx. 50g)
Certifications	CE, RoHS

How to add device to "eWeLink" app

Enable 2.4G WiFi ☒ Bluetooth ☒ Location ☒

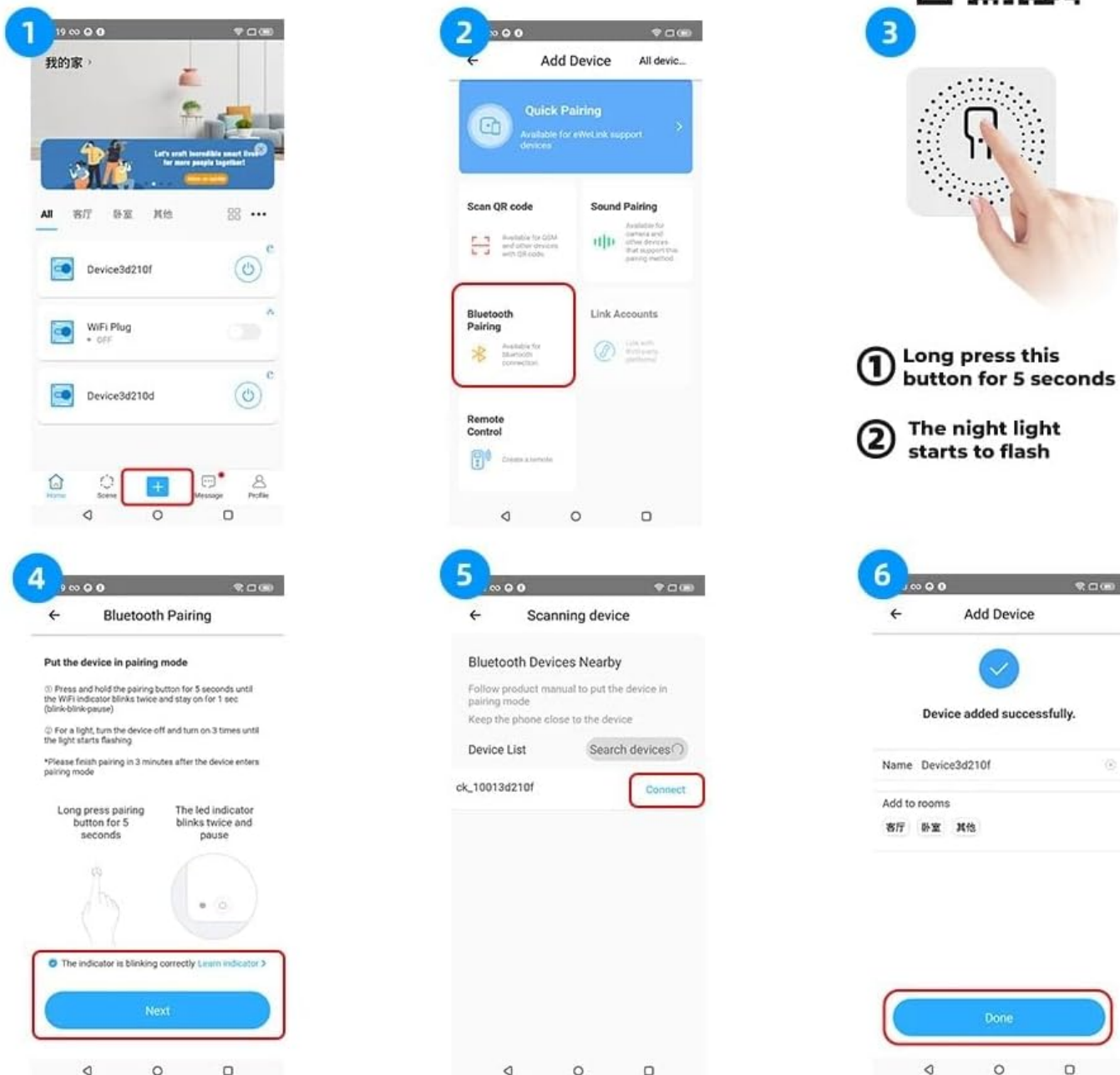


Figure 4.1: Approximate dimensions of the MHCOZY 1-Channel WiFi Smart Switch Relay Module.

5. SETUP

5.1. eWeLink App Download

The MHCOZY Smart Switch requires the eWeLink app for configuration and remote control.

1. For Android devices, download the "E-WeLink.apk" directly or search "eWeLink" in the Google Play Store.
2. For iOS devices, search "eWeLink" in the Apple App Store.
3. Alternatively, you can visit the official download page: <http://app.coolkit.cc/dl.html>

5.2. Wiring Instructions

The module requires a power supply and connections to the appliance you wish to control. Ensure all power is disconnected before wiring.

5.2.1. Powering the Module

The module can be powered by either a 5V USB source or an AC/DC 7-32V source. Choose one method.

- **USB 5V:** Connect a standard Micro USB cable to the USB port on the module and to a 5V USB power adapter.
- **AC/DC 7-32V:** Connect the power source to the "Input AC/DC 7-32V" screw terminals. Observe polarity if using DC.

default on/off mode,add wifi remote to light fan
etcThe power supply terminal and the control terminal
are connected with different voltages (2 power
supplies respectively)

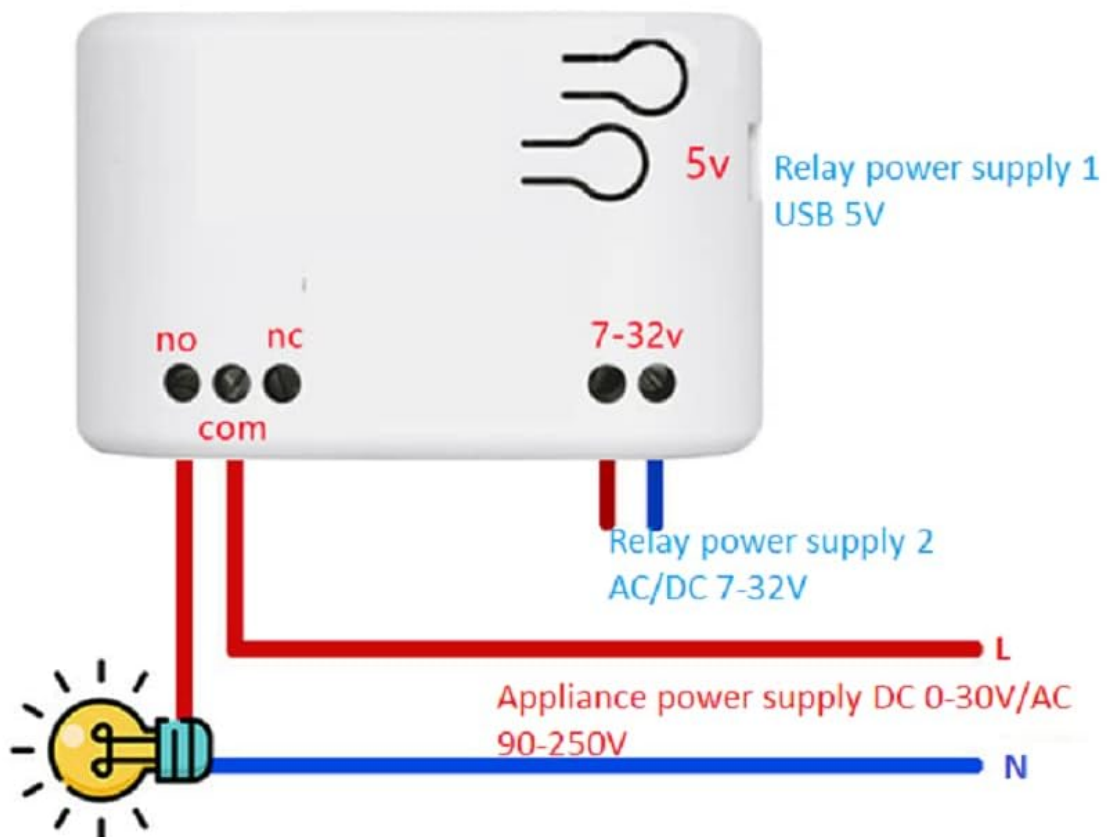


Figure 5.1: Power supply options for the module (USB 5V or AC/DC 7-32V) and basic appliance connection.

5.2.2. Connecting to an Appliance (Dry Contact)

The relay provides a dry contact output, meaning it acts like a switch without supplying voltage. You will connect the appliance's control circuit to the NO (Normally Open) and COM (Common) terminals for most applications.

set inching mode in ewelink app, set inching time from 0.5 second to 1 hour, Add wifi control to access control garage door opener

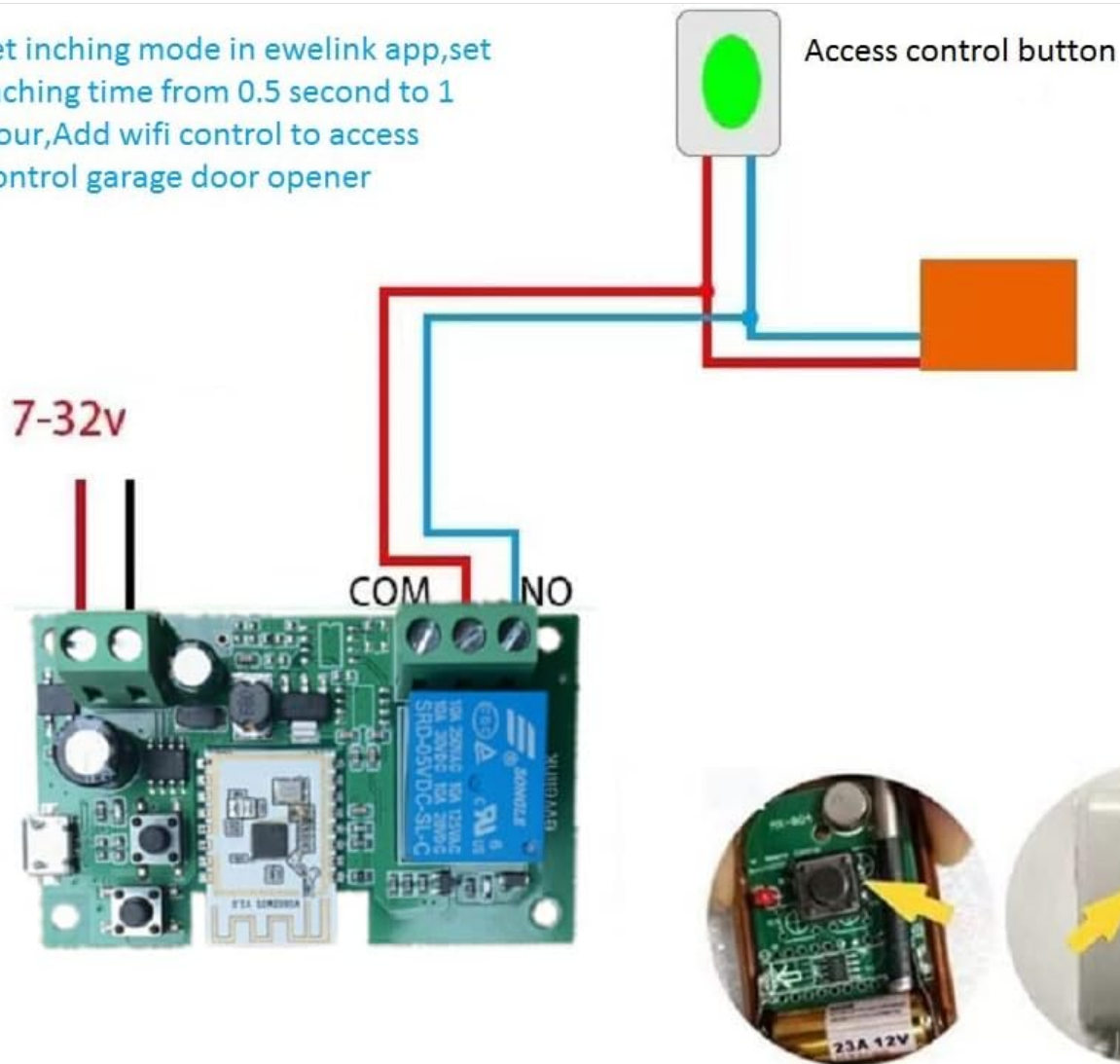


Figure 5.2: Example wiring for controlling an appliance (e.g., light) using the relay's dry contact output, emphasizing separate power sources.

For applications like garage door openers or access control buttons, connect the module's NO and COM terminals in parallel with the existing push button.

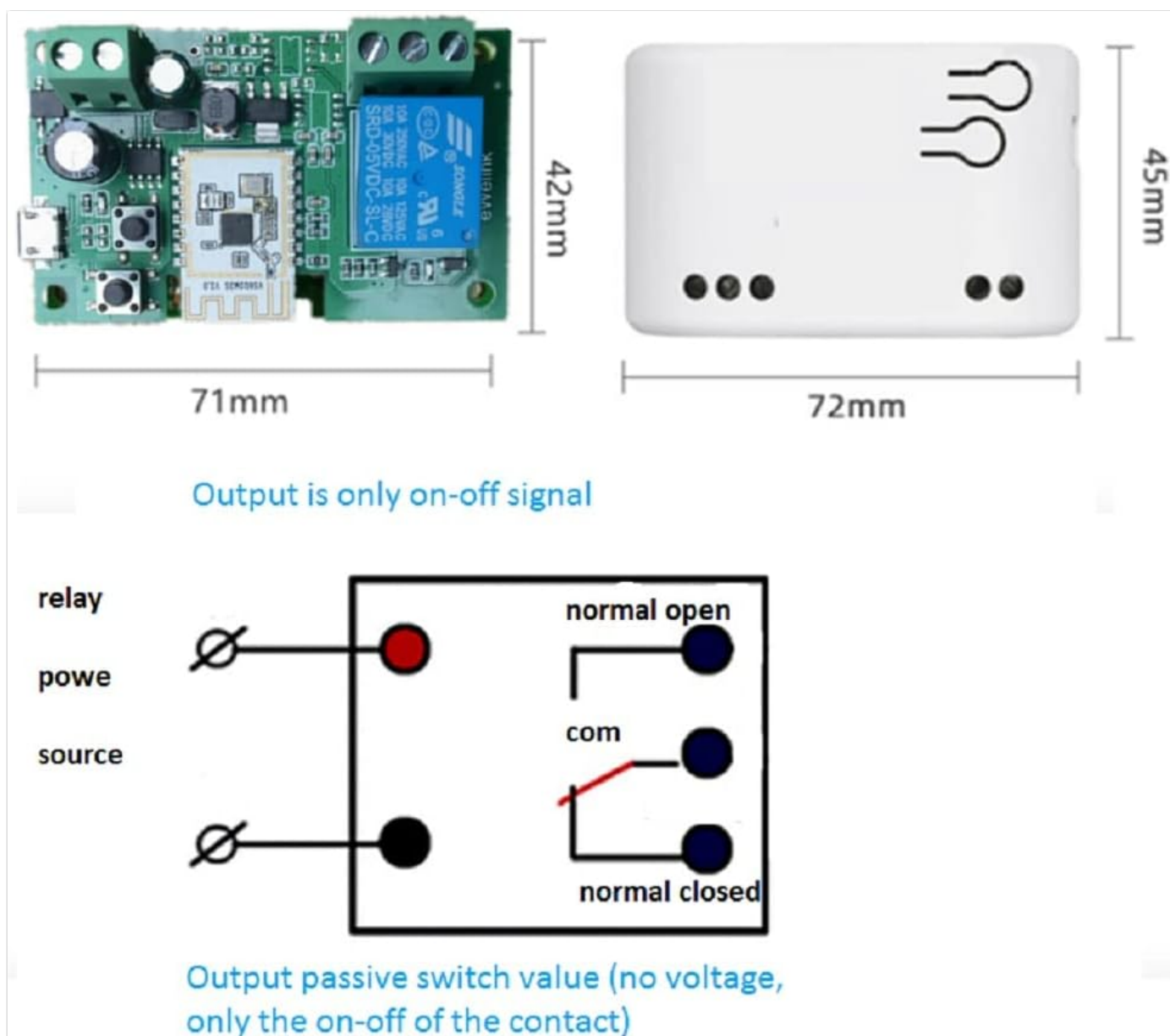


Figure 5.3: Example wiring for integrating the module with an access control button or garage door opener.

Important: The power supply for the module (5-32V) is separate from the power supply for the appliance being controlled by the relay. The relay output (NO, COM, NC) does not provide voltage.

5.3. Pairing with eWeLink App

To control the module via the eWeLink app, you need to pair it with your Wi-Fi network.

1. Prepare for Pairing:

- Ensure your smartphone is connected to a **2.4GHz WiFi network**. If your router has dual bands with the same SSID, temporarily disable the 5GHz band or ensure your phone is explicitly connected to 2.4GHz.
- Enable **Bluetooth** and **Location Services** on your smartphone.
- Power on the MHCOZY module. It will automatically enter Quick Pairing Mode, indicated by the LED flashing two short blinks followed by one long blink.

2. **Open eWeLink App:** Launch the eWeLink app on your smartphone.

3. **Add Device:** Tap the "+" icon or "Add Device" option in the app.

4. **Select Pairing Method:** Choose "Bluetooth Pairing" for the easiest setup.

5. **Initiate Pairing on Module:** If the module is not already in pairing mode, press and hold the "Configure" button on the

module for 5 seconds until the LED indicator flashes as described above (two short, one long).

6. **Scan for Devices:** The app will scan for nearby Bluetooth devices. Select your MHCOZY module from the list and tap "Connect".
7. **Complete Setup:** Follow the on-screen prompts to connect the device to your 2.4GHz WiFi network and name it.
8. **Compatible Mode (If Quick Pairing Fails):** If Bluetooth pairing fails, long-press the "Configure" button again until the LED flashes quickly and continuously. Then, select "Compatible Mode" in the eWeLink app and follow the instructions.

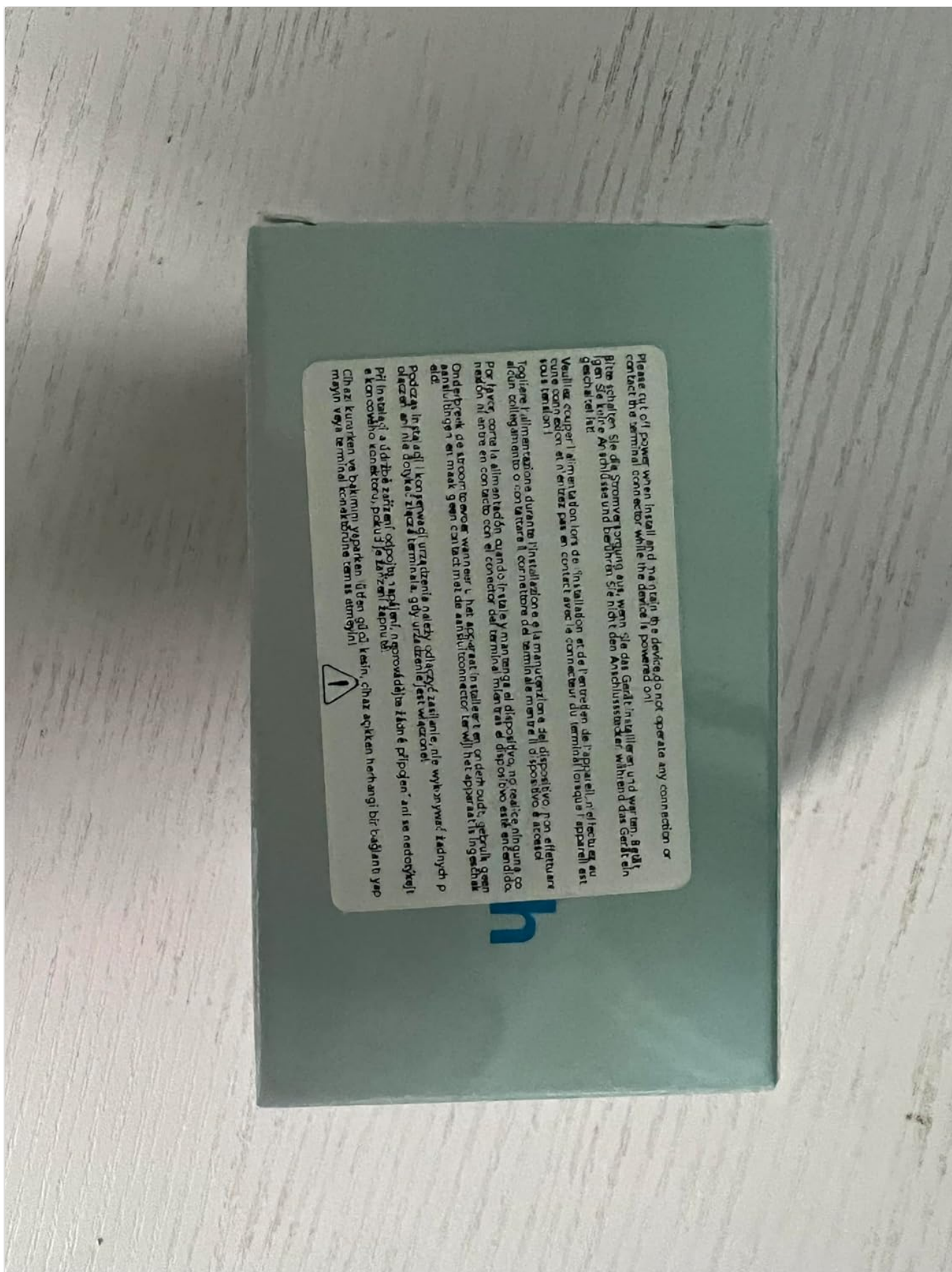


Figure 5.4: Visual guide for pairing the device with the eWeLink app.

6. OPERATING MODES

The MHCOZY module supports two primary operating modes, configurable within the eWeLink app:

6.1. Inching (Momentary) Mode

- In this mode, the relay will turn ON for a set duration (e.g., 0.5 seconds to 1 hour) after being triggered, and then automatically turn OFF.
- This mode is ideal for applications requiring a brief contact closure, such as activating a garage door opener, a momentary push button, or a computer power button.
- The inching time can be adjusted in the eWeLink app.

6.2. Self-locking (Toggle) Mode

- In this mode, the relay acts like a standard ON/OFF switch. One command turns it ON, and another command turns it OFF.
- This mode is suitable for controlling lights, fans, or other appliances that require continuous power until manually switched off.

You can switch between these modes and adjust settings within the eWeLink app for each channel.

7. VOICE CONTROL INTEGRATION

The MHCOZY module is compatible with popular voice assistants, allowing for convenient hands-free control.

7.1. Amazon Alexa

1. Open the Amazon Alexa app.
2. Go to "Skills & Games".
3. Search for "eWeLink Smart Home Fan" skill.
4. Enable the skill and link your eWeLink account.
5. Discover devices. You can now use voice commands like "Alexa, turn on [Device Name]".

7.2. Google Assistant

1. Open the Google Home app.
2. Tap "Add" (+) > "Set up device" > "Works with Google".
3. Search for "Smart We Link".
4. Link your eWeLink account.
5. You can now use voice commands like "Hey Google, turn off [Device Name]".

7.3. Apple Siri

You can integrate control with Siri by creating custom shortcuts within the eWeLink app. Refer to the eWeLink app's documentation for detailed instructions on creating Siri Shortcuts.

8. MAINTENANCE

- **Cleaning:** Use a dry, soft cloth to clean the device. Do not use harsh chemicals or abrasive cleaners.
- **Firmware Updates:** Periodically check the eWeLink app for available firmware updates to ensure optimal performance and security.
- **Environmental Conditions:** Avoid exposing the device to extreme temperatures, high humidity, or direct sunlight.

9. TROUBLESHOOTING

Problem	Possible Cause / Solution
Device cannot connect to Wi-Fi.	<ul style="list-style-type: none">◦ Ensure your router is broadcasting a 2.4GHz Wi-Fi signal. The module does not support 5GHz Wi-Fi.◦ If your router has a combined 2.4GHz/5GHz network name (SSID), temporarily disable the 5GHz band or ensure your phone is connected to 2.4GHz during pairing.◦ Verify Wi-Fi password is correct.◦ Move the module closer to the Wi-Fi router.◦ Try "Compatible Mode" pairing in the eWeLink app if Quick Pairing fails (long-press configure button until LED flashes quickly).◦ Ensure Bluetooth and Location Services are enabled on your phone during pairing.
Device is offline in the app.	<ul style="list-style-type: none">◦ Check if the module is powered on.◦ Verify your Wi-Fi network is active and has internet access.◦ Restart the module by disconnecting and reconnecting power.◦ Check Wi-Fi signal strength at the module's location.
Relay does not activate the appliance.	<ul style="list-style-type: none">◦ Ensure the module itself is powered correctly.◦ Verify wiring to the appliance (NO, COM, NC terminals). Remember it's a dry contact; the appliance needs its own power source.◦ Check if the appliance is functioning correctly when manually activated.◦ Ensure the relay is not overloaded (max 10A).
Voice control not working.	<ul style="list-style-type: none">◦ Ensure the eWeLink skill/service is correctly linked in your Alexa/Google Home app.◦ Verify the device name used in voice commands matches the name in the eWeLink app.◦ Check internet connectivity for both the voice assistant device and the MHCOZY module.

10. WARRANTY AND SUPPORT

10.1. Warranty Information

Specific warranty details for the MHCOZY WiFi Smart Switch Relay Module are typically provided at the point of purchase or by the seller. Please refer to your purchase documentation or contact the retailer for warranty terms and conditions.

10.2. Technical Support

For technical assistance or inquiries regarding your MHCOZY product, please contact customer support:

- **Email:** MHCOZY@outlook.com
- **Manufacturer:** mic technology co.,ltd

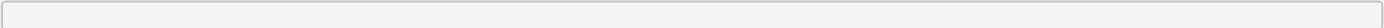





Figure 10.1: Product label showing manufacturer and contact details.

Related Documents - ew124

	<p>MHCzy USB 5V Switch Installation and Setup Guide</p> <p>A comprehensive guide to installing and configuring the MHCzy USB 5V Switch for remote control of FlexRadio devices using the Tuya Smart app. Includes step-by-step instructions, connection diagrams, and testing procedures.</p>
	<p>A Beginner's Guide to Remote HF Station Setup - FlexRadio Systems</p> <p>Learn how to set up a reliable remote High Frequency (HF) radio station with this beginner's guide from FlexRadio Systems. Covers essential components like AC power control, internet monitoring, remote PC access, and lightning mitigation.</p>
	<p>Yunzhiyu Wet Wipes and Hygiene Products Catalog</p> <p>Anhui Yunzhiyu Daily Chemical Products Co., LTD. offers a comprehensive range of wet wipes and hygiene products, including baby wipes, household cleaning wipes, industrial wipes, pet wipes, and more. Explore their product catalog featuring various specifications and certifications.</p>