

Manuals+

[Q & A](#) | [Deep Search](#) | [Upload](#)

Manuals.plus /

› [Togala](#) /

› Togala P99 Smart Watch User Manual

Togala P99

Togala P99 Smart Watch User Manual

Model: P99

INTRODUCTION

The Togala P99 Smart Watch is a versatile wearable device designed for both men and women, offering comprehensive fitness tracking and communication features. With its 1.96-inch HD touch screen and Bluetooth 5.3 connectivity, it allows users to answer and make calls directly from their wrist, receive message notifications, and monitor various health metrics. This manual provides detailed instructions for setting up, operating, and maintaining your smart watch to ensure optimal performance.

SETUP

1. Charging the Device

Before initial use, fully charge your Togala P99 Smart Watch. The device features a 310mAh large-capacity battery, requiring approximately 2 hours for a full charge. A full charge provides up to 7 days of normal usage and approximately 30 days of standby time.

Ultra-long Battery Life

2 Hours
Fast Charging

7 Days
Normal Use

30 Days
Standby



Image: The Togala P99 Smart Watch connected to its magnetic charging cable, indicating a full charge. This illustrates the charging process and the watch's battery status.

2. App Installation and Pairing

To unlock the full functionality of your smart watch, install the "GloryFit" application on your smartphone. The app is available on both Google Play Store for Android devices and Apple App Store for iOS devices.

1. Turn on the Bluetooth function on your smartphone.
2. Open the "Google Play" or the "APP Store" on your phone.
3. Search for "GloryFit" APP and download it.
4. Open the APP, click "Connect device", then "Select device", find "P99" and bind it.

3. Enabling Call Function

After successfully connecting your P99 to the GloryFit app, follow these steps to enable the answer/call function:

1. After selecting "P99" to connect, on the mobile phone system, a pop-up pairing request will appear. Select "pairing".

2. Turn on the call Bluetooth switch on the watch (used when the watch cannot make calls and play media sound).
3. In the phone settings, in the system Bluetooth, turn on these permissions of the P99.
4. Once connected, you can use the watch to answer/make calls anytime.

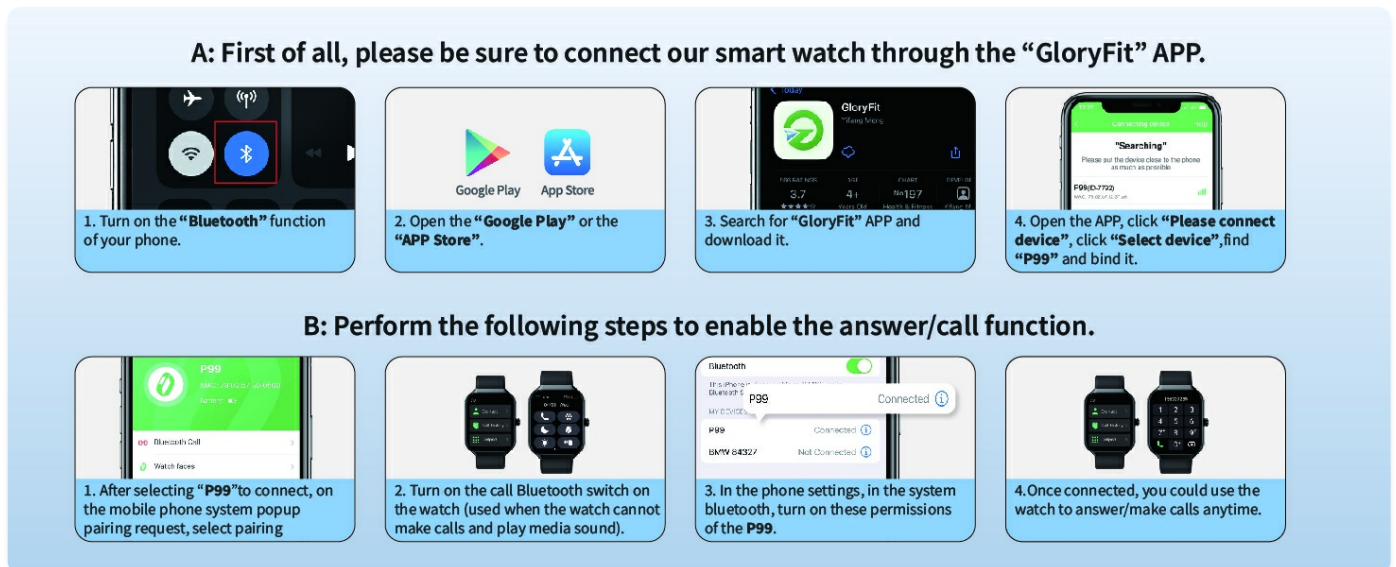


Image: A visual guide detailing the four steps for connecting the Togala P99 Smart Watch to a smartphone via the GloryFit app and enabling call functionality.

OPERATING THE SMART WATCH

1. Basic Navigation

- **Side Button:** Press the side button to wake up the screen or return to the main watch face.
- **Swipe Left/Right:** Navigate through different feature screens (e.g., daily activities, call function, sleep data, heart rate, blood oxygen, music, weather, workout modes).
- **Swipe Up/Down:** Access quick settings or detailed data within a specific feature.

2. Customizing Watch Faces

The 1.96-inch HD touch screen allows for clear and intuitive data display. You can personalize your watch face through the GloryFit app, choosing from over 250 online dial wallpapers or customizing with your own photos.

1.96" HD Full Touch Screen

200+ online watch faces in GloryFit app



Personalize Your Watch Face

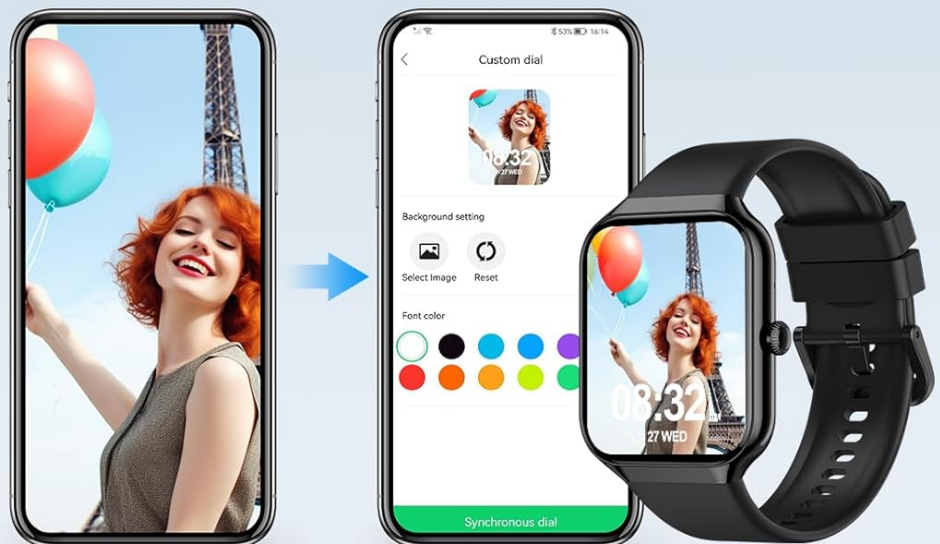


Image: The Togala P99 Smart Watch showcasing a variety of pre-designed watch faces and a visual representation of how users can upload their own photos to create custom watch faces via the app.

3. Call Functionality and Notifications

Leveraging Bluetooth 5.3, the smart watch provides a stable connection for communication. With its built-in microphone and Hi-Fi speaker, you can directly answer and make calls from your wrist. The watch also supports notifications from various messaging and social media applications (e.g., WhatsApp, Facebook, Instagram, Twitter, Skype, Line), displayed on your wrist with vibration alerts.

Call Bluetooth 5.3

Conveniently dial and call /answer /reject /mute an incoming call through your smartwatch



Built-in Mic



Hi-Fi Speaker



Call Records



100+Contacts



Image: The Togala P99 Smart Watch displaying its call interface with a dial pad and contact list, alongside icons representing various social media and messaging app notifications.

4. Health Monitoring

The Togala P99 Smart Watch is equipped with high-performance optical sensors to provide continuous health monitoring:

- **Heart Rate Monitor:** Provides 24-hour real-time heart rate tracking.
- **Blood Oxygen (SpO2) Monitor:** Measures blood oxygen saturation levels.
- **Sleep Monitoring:** Tracks deep sleep, light sleep, and awake times to help you understand your sleep patterns.
- **Sedentary Reminder:** Prompts you to move after periods of inactivity.
- **Female Menstrual Record:** Supports tracking of menstrual cycles.

Keep Track of Your Health Date

Calories 107 kcal

Steps 2676 steps

Time 180 min

Distance 1.86 km

Heart Rate 75 bpm



Image: The Togala P99 Smart Watch screen showing a summary of health data, including calories burned, distance covered, steps taken, and current heart rate, with a background image of a person hiking.

Improve your sleep habits

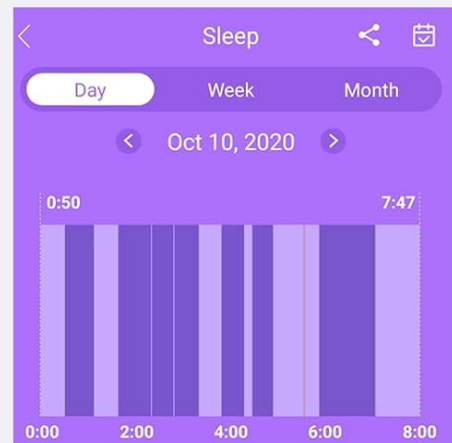
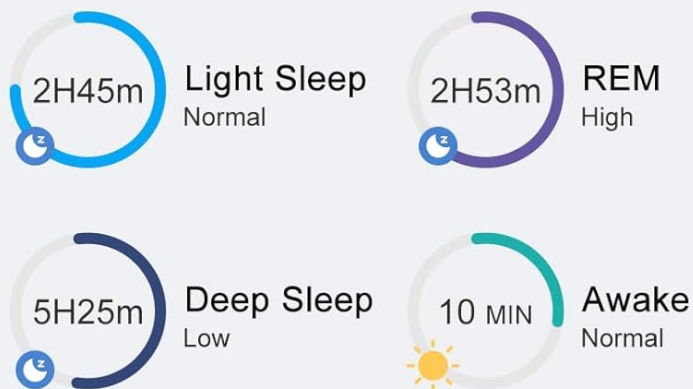
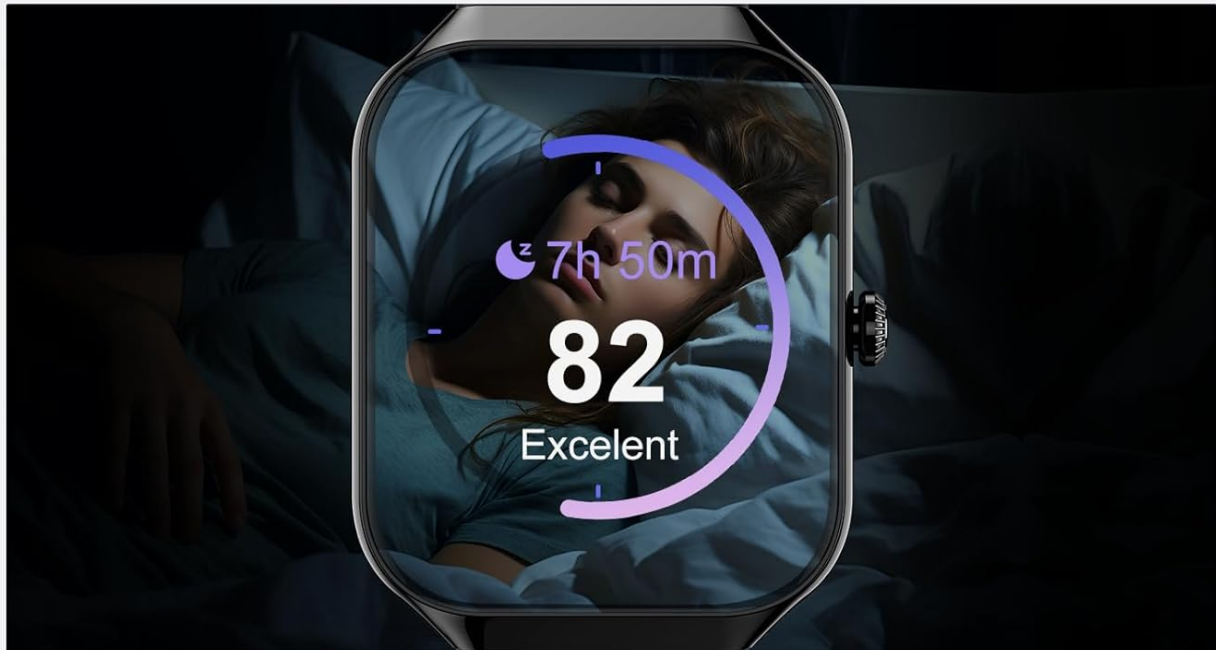


Image: The Togala P99 Smart Watch screen showing sleep data, including total sleep duration and a breakdown of light sleep, deep sleep, REM, and awake times, with a graph illustrating sleep patterns.

5. Activity Tracking

The smart watch supports over 113 sports modes, allowing you to track various activities such as walking, running, cycling, and soccer. You can view real-time sports data including steps, distance, and calories directly on the watch, helping you achieve your fitness goals.

6. Music Control

When connected to your phone, the watch allows you to control music playback (play, pause, skip tracks) on your smartphone. Please note that the watch does not store or play music directly from its internal storage.

7. Weather Forecast

Receive real-time weather updates and future forecasts directly on your watch, keeping you informed about current conditions and upcoming weather changes.

8. Other Practical Functions

The Togala P99 Smart Watch includes a variety of additional useful features:

- Alarm Clock
- Stopwatch
- Timer
- Camera Control (remote shutter for your phone's camera)
- Find Your Phone function
- Calculator
- Calendar
- Brightness Adjustment
- Breath Training

MAINTENANCE

1. Water Resistance (IP68)

The Togala P99 Smart Watch is IP68 waterproof, meaning it is resistant to dust and can withstand immersion in water up to 1.5 meters for 30 minutes. This makes it suitable for daily activities such as washing hands and showering. However, it is **not recommended** for use in hot water, saunas, spas, or seawater, as these conditions may compromise the water seal.



IP68 Waterproof



Rinse



Bathe



Sweat



Image: The Togala P99 Smart Watch shown with water splashing on it, accompanied by icons indicating it can be rinsed, bathed with, and is sweat-resistant, highlighting its IP68 waterproof capabilities.

2. Cleaning

Regularly clean your smart watch and strap with a soft, dry cloth. If necessary, use a slightly damp cloth and mild soap, then rinse and dry thoroughly. Avoid using harsh chemicals or abrasive materials.

TROUBLESHOOTING

Issue	Possible Cause	Solution
Watch not turning on	Low battery	Charge the watch for at least 2 hours.

Issue	Possible Cause	Solution
Cannot pair with phone	Bluetooth off, app not open, watch not in pairing mode, incorrect permissions.	Ensure Bluetooth is on, GloryFit app is open, and follow the pairing steps in the "Setup" section. Check phone's Bluetooth permissions for P99.
Call function not working	Call Bluetooth not enabled on watch or phone.	Refer to "Enabling Call Function" in the "Setup" section to ensure all necessary Bluetooth settings are enabled.
Inaccurate health data	Watch fit too loose/tight, sensor obstruction.	Ensure the watch is worn snugly but comfortably on your wrist. Clean the sensor area on the back of the watch.
Short battery life	Frequent screen wake-ups, high brightness, continuous monitoring.	Adjust screen brightness, reduce frequency of screen wake-ups (e.g., wrist raise feature), and consider turning off continuous monitoring for certain features if not needed 24/7.

SPECIFICATIONS

- **Model Number:** P99
- **Screen Size:** 1.96 Inches TFT-LCD Touch Screen
- **Resolution:** 320*386
- **Battery Capacity:** 310 Milliamp Hours (Lithium Polymer)
- **Battery Life:** Up to 7 days (normal use), 30 days (standby)
- **Charging Time:** Approximately 2 hours
- **Connectivity:** Bluetooth 5.3
- **Water Resistance:** IP68
- **Compatibility:** Android/iOS
- **Health Monitoring:** Heart Rate, Blood Oxygen (SpO2), Sleep Monitor
- **Activity Tracking:** 113+ Sports Modes, Step Counter, Distance Tracker, Calorie Tracker
- **Other Features:** Answer/Make Calls, Message Notifications, Alarm Clock, Stopwatch, Timer, Camera Control, Find Your Phone, Calculator, Music Control, Weather Forecast, Calendar, Brightness Adjustment, Breath Training, Sedentary Reminder, Female Menstrual Record.
- **Item Weight:** 2.82 ounces
- **Package Dimensions:** 6.46 x 3.78 x 0.75 inches

WARRANTY AND SUPPORT

For information regarding warranty coverage, technical support, and customer service, please refer to the documentation included with your product or visit the official Togala website. Keep your purchase receipt for warranty claims.