

KOTLIE EM-308A

KOTLIE EM-308A Capsule Coffee Machine Pod Accessory Instruction Manual

INTRODUCTION

This manual provides essential information for the proper use and maintenance of your KOTLIE EM-308A Capsule Coffee Machine Pod Accessory. Please read these instructions carefully before use to ensure optimal performance and longevity of the product.

COMPATIBILITY

This adapter is designed exclusively for KOTLIE brand EM-308A capsule coffee machines. It is not compatible with KOTLIE EM-308B models or any other coffee machine brands or models.

The adapter is compatible with Dolce Gusto capsules.



Image: The KOTLIE EM-308A capsule adapter shown alongside a compatible KOTLIE coffee machine, illustrating its intended use.

SETUP AND INSTALLATION

1. **Step 1:** Ensure your KOTLIE EM-308A coffee machine is unplugged and cool.
2. **Step 2:** Open the capsule compartment of your coffee machine.
3. **Step 3:** Insert the KOTLIE EM-308A capsule adapter into the designated slot. Ensure it is seated firmly.



Image: A detailed view of the KOTLIE EM-308A capsule adapter, highlighting its design for proper insertion into the coffee machine.

OPERATION

1. **Step 1:** Place a compatible Dolce Gusto capsule into the adapter. Ensure the capsule is complete and free from dents or damage.

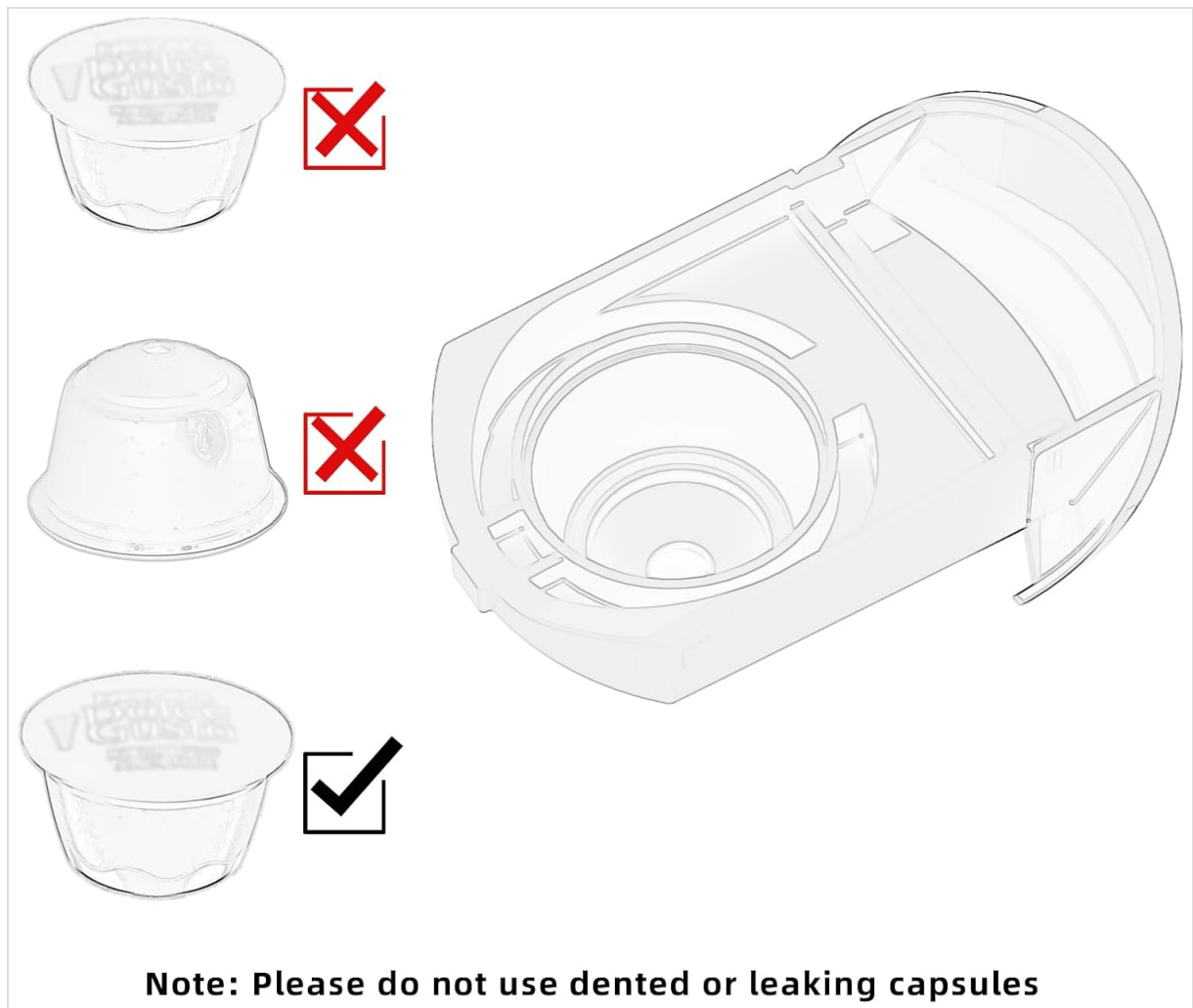
**This pod is only suitable
for Dolce & Gusto
Capsules**



Image: A Dolce Gusto capsule being placed into the KOTLIE EM-308A adapter, demonstrating the correct orientation for use.

2. **Step 2:** Close the capsule compartment securely.
3. **Step 3:** Follow your KOTLIE EM-308A coffee machine's instructions for brewing.

Important Note: Using damaged or dented capsules can lead to machine malfunctions. Always inspect capsules before use.



Note: Please do not use dented or leaking capsules

Image: An illustration showing examples of acceptable (undented) and unacceptable (dented or leaking) Dolce Gusto capsules for use with the adapter.

MAINTENANCE AND CARE

After each use, remove the adapter and rinse it under running water. Allow it to air dry completely before storing or re-using.

Note: The internal components of the adapter are not designed for deep cleaning. Attempting to disassemble or clean the inside may cause damage.

TROUBLESHOOTING

- **Issue:** Coffee machine malfunctions or does not brew correctly.
- **Possible Cause:** A damaged or dented capsule may be obstructing the brewing mechanism.
- **Solution:** Unplug the coffee machine immediately. Remove the capsule adapter and inspect the capsule. If the capsule is damaged, discard it. Allow the machine to rest for 6 hours before attempting to use it again with a new, undamaged capsule.

SPECIFICATIONS

- **Product Dimensions:** 4.9 x 3.5 x 2.8 inches
- **Item Weight:** 5.4 ounces
- **Material:** Plastic

- **Number of Pieces:** 1
- **Unit Count:** 1.0 Count

SUPPORT AND WARRANTY

KOTLIE provides lifetime technical support for its customers. For assistance, please contact us through the following channels:

- **Amazon:** Navigate to "Your Account" > "Your orders" and select "Ask Product Question" for your purchase.
- **Email:** support@ikotlie.com
- **Phone (US & CA):** +1-978-386-9466 (Monday-Friday, 9am-5pm EST)



Image: KOTLIE customer support information, including email and phone number, for technical assistance.