



[Manuals.plus](#) /

› [Stylrtop](#) /

› Stylrtop Universal Fingerprint Door Knob User Manual

Stylrtop Stylrtop P121

Stylrtop Universal Fingerprint Door Knob User Manual

Model: Stylrtop P121

INTRODUCTION

Thank you for choosing the Stylrtop Universal Fingerprint Door Knob. This smart lock provides a secure and convenient keyless entry solution for your home or office. Designed with advanced fingerprint recognition, a keypad, and traditional mechanical key access, it offers multiple ways to secure your personal space. This manual provides detailed instructions for installation, operation, and maintenance to ensure optimal performance and longevity of your device.



Image: The Stylrtop Universal Fingerprint Door Knob, showcasing its sleek design with a fingerprint sensor and numeric keypad.

PRODUCT FEATURES

- **Keyless Entry:** Offers convenient access via fingerprint, passcode, or mechanical key.
- **Enhanced Security:** Utilizes local encryption chips for personal data storage, ensuring network-free information security. Fingerprint recognition is designed for living human fingerprints only.
- **Child-Proof:** Helps prevent children from entering potentially hazardous areas like workshops or wine cellars.
- **Versatile Application:** Suitable for various interior doors including bedrooms, offices, living rooms, and more.
- **Easy Installation:** Designed for quick and straightforward installation, typically within 10-15 minutes.
- **Automatic Locking:** Features an auto-lock mode that engages after 4 seconds for added security.
- **Long Battery Life:** Powered by 4 AAA batteries (not included) providing 12-18 months of operation.
- **Low Power Alarm & Emergency Charging:** Alerts when battery is low and includes a USB-C port for emergency power.

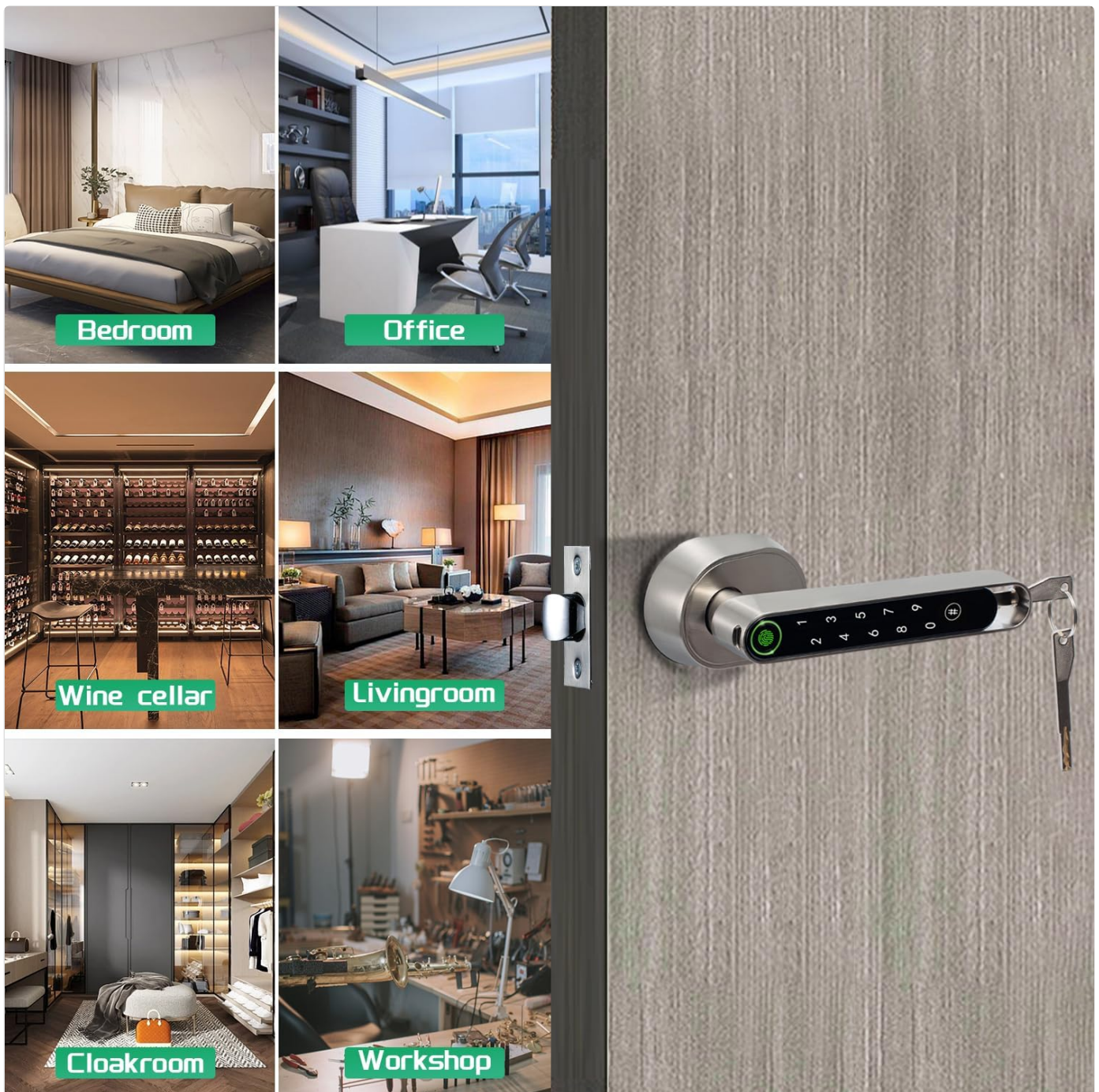


Image: Visual representation of the Stylrtop door knob installed in various settings such as a bedroom, office, wine cellar, living room, cloakroom, and workshop, highlighting its versatility.

SETUP AND INSTALLATION

1. Compatibility Check

Ensure your door meets the following specifications for proper installation:

- **Door Thickness:** 35 mm to 55 mm (1 $\frac{3}{8}$ " to 2 $\frac{1}{8}$ ")
- **Backset:** 60 mm or 70 mm (2 $\frac{3}{8}$ " or 2 $\frac{3}{4}$ ")
- **Cross Bore Diameter:** 54 mm (2 $\frac{1}{8}$ ")
- **Door Hole Diameter:** 25 mm (1")

2. Battery Installation

The lock requires 4 AAA batteries (not included). Follow these steps:

1. Remove the battery cover.
2. Carefully push the battery box from the back to the front.
3. Insert 4 AAA batteries, ensuring correct polarity.
4. Reinsert the battery box and replace the cover.

Note: Inserting the battery box vertically may damage the connector pins.

3. General Installation Steps

While detailed steps are provided in the included physical manual, the installation process is designed to be user-friendly and can typically be completed within 10-15 minutes. Ensure all components are securely fastened and aligned according to the instructions.

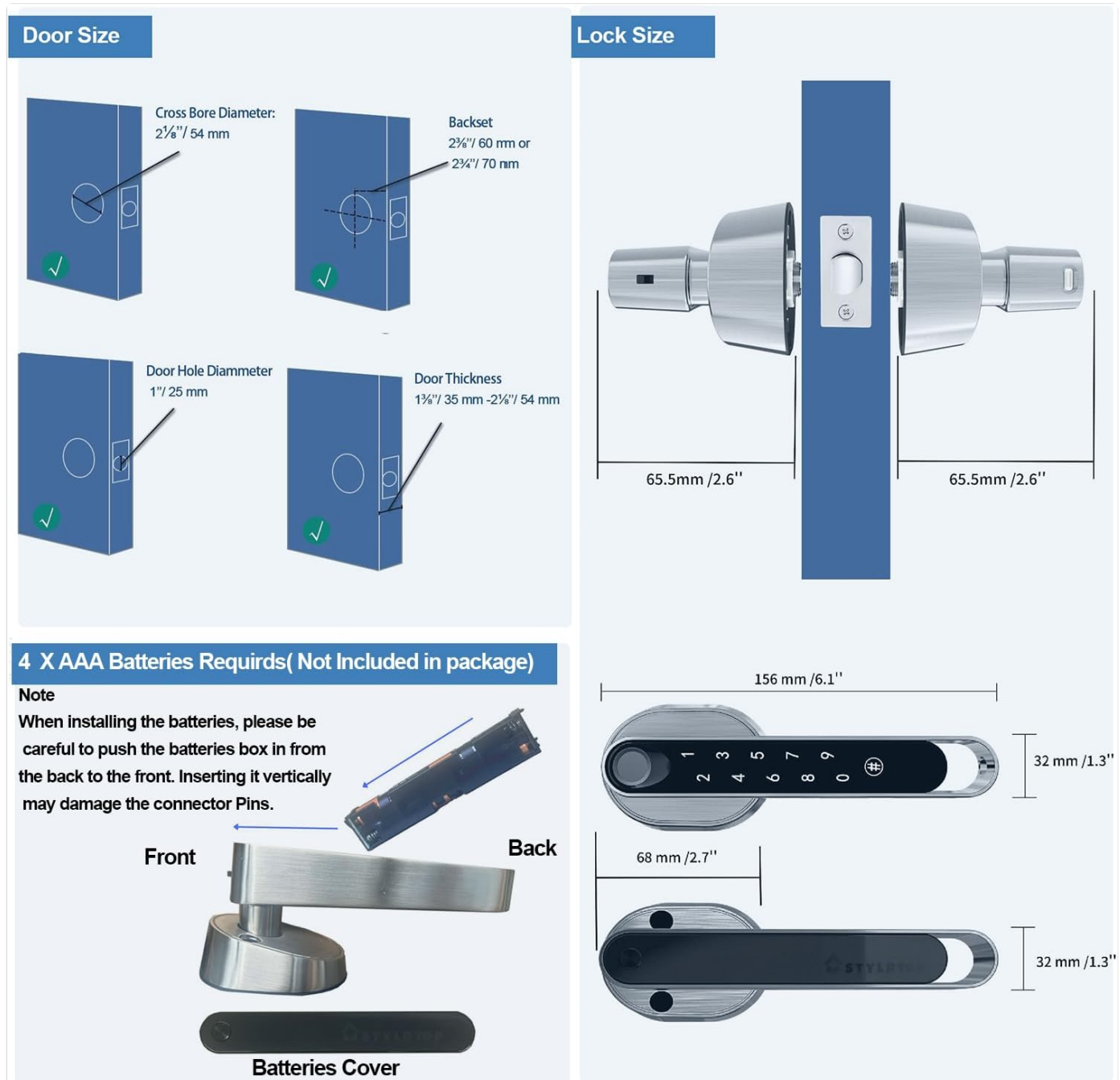


Image: Diagrams illustrating door size requirements (cross bore, door hole, thickness, backset) and lock dimensions, along with a visual guide for installing 4 AAA batteries into the lock's battery compartment.

OPERATING INSTRUCTIONS

Unlocking Methods

The Stylrtop P121 offers three primary methods for unlocking:

- **Fingerprint Unlock:** Place your registered finger on the sensor for instant access. The lock supports "One-Touch-Unlock".
- **Passcode Unlock:** Enter your programmed numerical passcode on the keypad.
- **Mechanical Key Unlock:** Use the provided physical key as a traditional backup method.

KEYLESS SOLUTION TO SECURE YOUR PERSONAL SPACE

- KEEPING YOUR ROOM PRIVATE WHEN LIVING WITH ROOMMATES OR FAMILY MEMBERS.
- KEEPING CHILDREN AWAY FROM POTENTIALLY DANGEROUS ROOMS.
- KEEPING YOUR OFFICE PRIVATE WHEN YOU'RE OUT.

Fingerprint Unlock

Passcode Unlock

Mechanical Key Unlock

One-Touch-Unlock

Image: A visual guide demonstrating the three keyless entry methods: fingerprint unlock, passcode unlock, and mechanical key unlock, emphasizing the one-touch fingerprint feature.

Modes of Operation

- **Auto-Lock Mode:** For enhanced security, the lock automatically engages and locks the door 4 seconds after it has been opened or unlocked.
- **Free-Passage Mode:** This mode allows the door to remain unlocked for continuous passage, ideal for high-traffic periods. Refer to the full manual for instructions on how to activate and deactivate this mode.



Image: Two scenarios illustrating the lock's modes: Free-Passage Mode, showing a child freely entering a room, and Auto-Lock Mode, showing a person waiting for the lock to automatically engage after 4 seconds.

Power Management

- **Low Power Alarm:** The lock will provide an audible or visual alert when the battery level is low, indicating that batteries need to be replaced soon.
- **Emergency USB-C Charging Port:** In case of complete battery depletion, a USB-C port is available for temporary emergency power to unlock the door. Connect a standard USB-C cable to a power source (e.g., power bank) to activate the lock.

12-18 MONTHS LONG LIFE

4x AAA Batteries to Power (not included)



Low Power Alarm



Emergency USB-C Charging Port

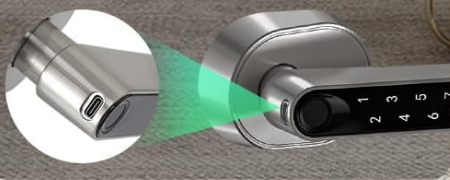


Image: A graphic illustrating the 12-18 month battery life, a visual representation of the low power alarm (red light on the handle), and the location of the emergency USB-C charging port.

MAINTENANCE

- **Battery Replacement:** Replace all 4 AAA batteries when the low power alarm is activated to ensure continuous operation. Always use new, high-quality alkaline batteries.
- **Cleaning:** Wipe the lock's surface with a soft, dry cloth. Avoid using abrasive cleaners, solvents, or harsh chemicals, as these can damage the finish and electronic components.
- **Sensor Care:** Keep the fingerprint sensor clean and free of dirt or moisture to ensure accurate readings.

TROUBLESHOOTING

Problem	Possible Cause	Solution
---------	----------------	----------

Problem	Possible Cause	Solution
Lock does not respond or work intermittently.	Low batteries; incorrect installation; sensor obstruction.	Replace batteries. Check installation for proper alignment. Clean fingerprint sensor. Use mechanical key for emergency access.
Fingerprint not recognized.	Fingerprint not registered; dirty sensor; wet finger; sensor damage.	Ensure fingerprint is properly registered. Clean the sensor. Ensure finger is dry. Try another registered finger or use passcode/key.
Passcode not working.	Incorrect passcode entered; passcode not set; keypad issue.	Verify the correct passcode. Ensure passcode is properly set. Try re-entering the passcode carefully.
Lock language changed unexpectedly (e.g., to Chinese).	Accidental language setting change.	Refer to the full manual for instructions on how to change the language settings. This typically involves a specific sequence of button presses on the keypad.
Battery drains quickly.	Low-quality batteries; frequent usage; environmental factors.	Use high-quality alkaline AAA batteries. If issue persists, contact customer support.

SPECIFICATIONS

- **Model:** Stylrtop P121
- **Manufacturer:** Stylrtop
- **Material:** Aluminum
- **Finish:** Anodization
- **Color:** Pack of 2 Units (as per product listing, though manual is for one lock)
- **Dimensions:** 17.78 x 12.7 x 12.7 cm (7 x 5 x 5 inches)
- **Weight:** 907.18 g (2 lbs)
- **Power Source:** 4 x AAA Batteries (not included)
- **Special Features:** Fingerprint Unlock, Passcode Unlock, Automatic Lock, No App Required, Touch Screen, Emergency USB-C Charging.
- **Lock Type:** Biometric
- **Compatible Door Thickness:** 35 mm to 55 mm
- **Compatible Backset:** 60 mm or 70 mm
- **Compatible Cross Bore Diameter:** 54 mm

WARRANTY AND SUPPORT

Stylrtop provides a **1-year money-back guarantee** from the date of purchase for this product. Additionally, **lifetime customer support** is available to assist you with any questions or issues you may encounter.

For technical assistance, troubleshooting, or warranty claims, please contact Stylrtop customer service through the retailer's platform or the official Stylrtop website. Please have your purchase details and product model number (Stylrtop P121) ready when contacting support.

