

[manuals.plus](#) /

› [SUPRENT](#) /

› [SUPRENT BK215 Bikini Trimmer Women User Manual](#)

## SUPRENT BK215

# SUPRENT BK215 Bikini Trimmer Women User Manual

Model: BK215

## 1. INTRODUCTION

This manual provides detailed instructions for the safe and effective use of your SUPRENT BK215 Bikini Trimmer. Please read this manual thoroughly before first use and retain it for future reference. This device is designed for personal grooming and hair removal on various body areas.

## 2. PRODUCT OVERVIEW

### 2.1 Package Contents



Figure 2.1: The SUPRENT BK215 Bikini Trimmer, showing the main unit with two interchangeable heads, a USB-C charging cable, a cleaning brush, a small bottle of blade oil, a length guide comb, and a storage bag.

- SUPRENT BK215 Trimmer Unit
- Precision Trimmer Head (T-blade)
- Rotary Shaver Head
- USB-C Charging Cable
- Cleaning Brush
- Blade Lubricating Oil
- Length Guide Comb
- Storage Bag

## 2.2 Key Features

- **Skin-Friendly Blades:** Equipped with anti-cut ceramic blades and R-shaped chamfer design to prevent nicks and irritation.

# PATENTED SAFE CHAMFERED BLADE

Achieving a perfectly smooth and even  
shave in one minute, without nicks,  
cuts or irritation



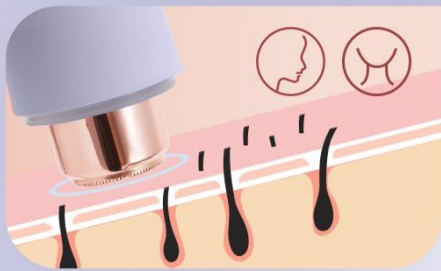
Figure 2.2: Illustration of the R-shape blade and chamfering technology designed for skin protection during trimming.

- **Versatile Use:** Two interchangeable cutter heads for various body areas including hands, legs, face, underarms, and bikini area.

# ALL IN ONE TRIMMER AND HAIR REMOVAL KIT



Effortless, painless trimming  
for your most intimate areas.



Achieve flawless facial hair  
removal with our gentle trimmer.



Figure 2.3: A diagram illustrating the trimmer's effectiveness for both intimate area trimming and gentle facial hair removal.

- **Wet and Dry Operation:** IPX5 waterproof rating allows for safe use in wet conditions and easy cleaning under running water.

# WHOLE BODY WASHABLE WATERPROOF

Washable Shaver head



Figure 2.4: The trimmer being held over wet skin, highlighting its waterproof design for whole-body washability.

- **Portable and Rechargeable:** USB-C charging for convenience, offering up to 45 days of use on a 2-hour charge. Includes a travel lock feature.





Figure 2.5: A close-up of the trimmer's USB-C charging port and the power button, which also functions as a travel lock when pressed for 2 seconds.

- **Integrated LED Light:** A built-in LED light illuminates the trimming area for enhanced visibility, ensuring thorough hair removal.

### 3. SETUP

#### 3.1 Initial Charging

Before first use, fully charge the trimmer. Connect the provided USB-C cable to the charging port on the trimmer and plug the other end into a compatible USB power source (e.g., wall adapter, computer USB port). The indicator light will show charging status and turn off or change color when fully charged. A full charge takes approximately 2 hours and provides up to 45 days of typical use.

#### 3.2 Attaching/Detaching Cutter Heads

1. To attach a head: Align the desired cutter head with the trimmer body and gently push until it clicks into place.
2. To detach a head: Hold the trimmer body firmly and pull the cutter head straight off.

Ensure the trimmer is turned off before changing heads.

### 3.3 Using the Length Guide Comb

The length guide comb is designed for use with the precision trimmer head to achieve desired hair lengths. Slide the comb onto the precision trimmer head until it securely locks. Adjust the comb to your preferred length setting if it has multiple positions. Remove the comb by sliding it off.

## 4. OPERATING INSTRUCTIONS

---

### 4.1 Power On/Off and Mode Selection

- Press the power button once to turn on the precision trimmer head.
- Press the power button a second time to switch to the rotary shaver head.
- Press the power button a third time to turn the device off.
- To activate the travel lock, press and hold the power button for 2 seconds. Repeat to unlock.

### 4.2 Wet and Dry Use

The SUPRENT BK215 is IPX5 waterproof, allowing for both dry and wet use. For dry use, ensure skin is clean and dry. For wet use, you may use it in the shower or with shaving cream/gel for a smoother experience. Always rinse the head after wet use.

### 4.3 Trimming Techniques

# Always Stay Bikini-Ready With Our Versatile T rimmer

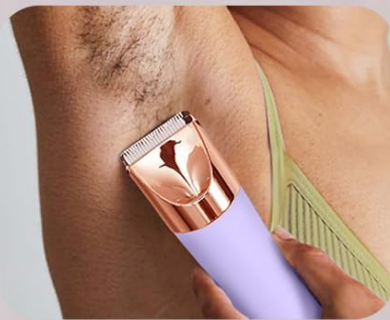


Figure 4.1: The trimmer demonstrating its versatility for use on facial hair, underarms, and legs.





Figure 4.2: A visual representation of the trimmer being used for different grooming needs, including bikini line, underarms, and facial areas, to achieve smooth skin.

- **For Bikini Area and Body:** Use the precision trimmer head. For closer trims, use without the length guide comb. For shaping, gently pull the skin taut and move the trimmer against the direction of hair growth.
- **For Facial Hair:** Use the rotary shaver head for fine hair or the precision trimmer head with a guide comb for shaping eyebrows or removing peach fuzz. Move in small, circular motions or against the direction of hair growth.
- **For Underarms and Legs:** The precision trimmer head is suitable for these areas. For best results, ensure skin is clean.
- **Using the LED Light:** The built-in LED light automatically activates when the trimmer is on, providing illumination for better visibility of fine hairs.

Always ensure your skin is clean before trimming. For sensitive areas, proceed with caution and stretch the skin to create a flat surface.

## 5. MAINTENANCE

---

## 5.1 Cleaning the Trimmer

1. Turn off the trimmer and detach the cutter head.
2. Use the provided cleaning brush to remove any loose hairs from the blades and inside the trimmer head.
3. Rinse the cutter head under running water. The trimmer body can also be rinsed, but avoid submerging it for extended periods.
4. Allow all parts to air dry completely before reattaching or storing.

## 5.2 Lubricating Blades

After every few uses or after cleaning, apply 1-2 drops of the provided lubricating oil to the blades of the precision trimmer head. Turn the trimmer on for a few seconds to distribute the oil evenly. This helps maintain blade sharpness and ensures smooth operation.

## 5.3 Charging and Battery Care

- Charge the trimmer when the battery indicator shows low power.
- Use only the provided USB-C cable for charging.
- Do not expose the trimmer to extreme temperatures.
- For long-term storage, charge the trimmer fully every 3 months to preserve battery life.

## 5.4 Storage

Store the trimmer and its accessories in the provided storage bag in a cool, dry place, away from direct sunlight and out of reach of children.

## 6. TROUBLESHOOTING

Problem	Possible Cause	Solution
Trimmer does not turn on.	Battery is depleted. Travel lock is active.	Charge the trimmer fully. Press and hold the power button for 2 seconds to deactivate the travel lock.
Poor trimming performance or pulling hair.	Blades are dull or clogged with hair. Blades are not lubricated.	Clean the cutter head thoroughly. Apply lubricating oil to the blades.
Trimmer stops working during use.	Battery is low. Excessive hair buildup.	Recharge the trimmer. Turn off, clean the cutter head, then resume.

## 7. SPECIFICATIONS

- **Model:** BK215
- **Manufacturer:** SUPRENT
- **Power Source:** Rechargeable Lithium-ion Battery
- **Charging:** USB-C
- **Charging Time:** Approximately 2 hours
- **Operating Time:** Up to 45 days (based on typical use)
- **Waterproof Rating:** IPX5
- **Product Dimensions:** 19.99 x 9.5 x 6.5 cm

- **Weight:** 400 g

## 8. WARRANTY AND SUPPORT

For warranty information or technical support, please refer to the warranty card included with your product or contact SUPRENT customer service directly. Contact details can typically be found on the official SUPRENT website or on the product packaging.



© 2024 SUPRENT. All rights reserved.

### Related Documents - BK215

	<p><a href="#">Suprent BT575BX Beard Trimmer User Manual</a></p> <p>User manual for the Suprent BT575BX Beard Trimmer, detailing specifications, basic parameters, product description, and warranty information.</p>
	<p><a href="#">SUPRENT BC-VD-NH515 User Manual - Operation, Safety, and Specifications</a></p> <p>Comprehensive user manual for the SUPRENT BC-VD-NH515, providing detailed instructions on operation, safety precautions, maintenance, troubleshooting, and product specifications.</p>
	<p><a href="#">SUPRENT PRO ZEUS Hair Clipper Kit HC735BX User Manual</a></p> <p>User manual for the SUPRENT PRO ZEUS Hair Clipper Kit HC735BX, detailing specifications, basic parameters, product description, usage instructions, and warranty information.</p>
	<p><a href="#">SunEnergyXT BK215 PLUS / B215 PLUS Benutzerhandbuch</a></p> <p>Umfassendes Benutzerhandbuch für die SunEnergyXT BK215 PLUS und B215 PLUS Balkonkraftwerkspeicher. Enthält Anleitungen zur Installation, Bedienung, Sicherheit und Fehlerbehebung.</p>