

ANDYCINE T6

ANDYCINE T6 On-Camera Monitor User Manual

Model: T6 | Brand: ANDYCINE

PRODUCT OVERVIEW

The ANDYCINE T6 is a 6-inch on-camera monitor designed for DSLR and video cameras, offering a 1920x1080 resolution display. It features a robust aluminum shell for durability and supports advanced monitoring functions such as Waveform, Histogram, Focus Assist, Peaking, False Color, and 3D LUT loading. With 4K HDMI 2.0 input/output, versatile power options, and an intuitive user interface, the T6 is a comprehensive tool for professional video production.



Figure 1: ANDYCINE T6 On-Camera Monitor displaying various video analysis tools.

WHAT'S IN THE BOX

The ANDYCINE T6 monitor comes with a complete set of accessories to get you started immediately:

- 1x ANDYCINE T6 Monitor
- 1x Packaging Box
- 1x Sunshade
- 1x Carry Case
- 1x F550 Battery
- 1x Hot Shoe Mount
- 1x Micro HDMI Cable
- 1x USB-C Charging Cable
- 1x User Manual (this document)

What ' s in the box ?



T6 Monitors X1



Packaging Box X1



Sunshade X1



Carry Case X1



F550 Battery X1



Micro HDMI Cable X1



User Manual X1



Hot Shoe Mount X1

Figure 2: All components included in the ANDYCINE T6 On-Camera Monitor package.

SETUP GUIDE

1. Powering the Monitor

The T6 monitor offers flexible power options:

1. **Battery Power:** Insert the included F550 battery into the NP-F battery slot on the rear of the monitor. Ensure it clicks securely into place.
2. **DC Input:** Connect a compatible 7-24V DC power adapter (not included) to the DC IN port.
3. **USB-C Input:** For convenient power, connect a 5V USB-C power source (not included) to the USB-C port.



Figure 3: Flexible power methods for the T6 monitor.

2. Mounting the Monitor

The T6 monitor features dual 1/4-inch threaded mounting holes for versatile attachment to your camera rig or stand.

1. Attach the included hot shoe mount to your camera's hot shoe.
2. Secure the T6 monitor to the hot shoe mount using one of the 1/4-inch screw holes.
3. Adjust the angle for optimal viewing.

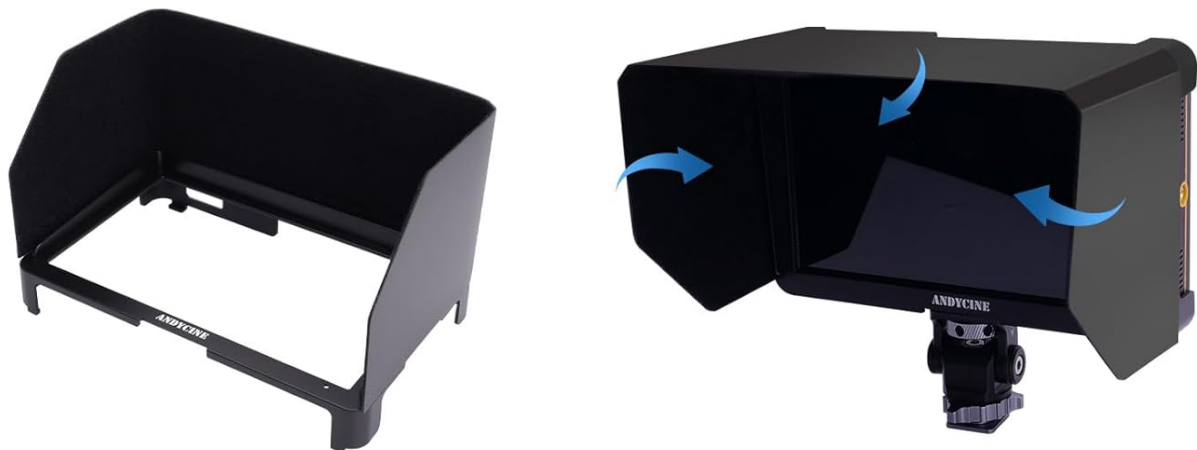


Figure 4: T6 monitor mounted on a camera with sun hood.

3. Connecting to a Camera (HDMI)

The T6 monitor supports HDMI 2.0 for input and loop-out, handling up to 4K at 60FPS.

1. Connect one end of the included Micro HDMI cable to your camera's HDMI output port.
2. Connect the other end of the Micro HDMI cable to the **HDMI IN** port on the side of the T6 monitor.
3. (Optional) To output the signal to another display, connect an HDMI cable from the **HDMI OUT** port on the T6 monitor to your secondary display.

4K HDMI In/Loop out

Enhance collaboration: Connect to director's monitor or output signals to additional screens, fostering seamless communication between photographers and directors.

HDMI Support Formates :

- 480i/576i/480p/576p
- 720p (60/59.94/50/30/29.97/25/24/23.98)
- 1080i (60/59.94/50)
- 1080p (60/59.94/50/30/29.97/25/24/23.98)
- 3840x2160p (60/50/30/29.97/25/24/23.98)
- 4096x2160p (60/50/30/29.97/25/24/23.98)



Figure 5: HDMI Input and Loop-out connectivity.

OPERATING THE MONITOR

1. Basic Controls and Interface

The T6 monitor features an intuitive user interface and physical buttons for easy navigation and control.

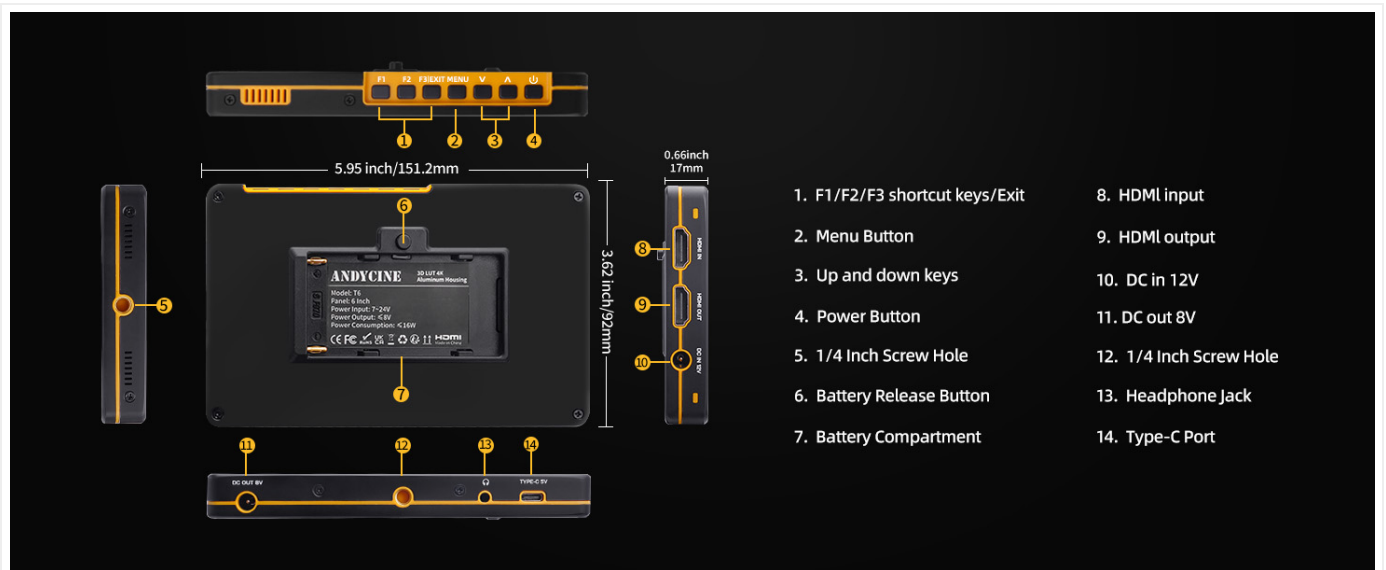


Figure 6: T6 Monitor Ports and Controls Diagram.

- **Power Button:** Press and hold to turn the monitor on or off.
- **Menu Button:** Access the main menu for settings adjustments.
- **Up/Down Keys:** Navigate through menu options and adjust values.
- **F1/F2/F3 Shortcut Keys:** Customizable function buttons for quick access to frequently used features. You can assign functions like Peaking, False Color, or 3D LUT.

2. Advanced Monitoring Features

The T6 monitor provides a suite of professional monitoring tools to assist with precise shooting and exposure:

- **Waveform:** Displays the luminance and chrominance levels of your video signal, helping to ensure proper exposure.

- **Histogram:** Shows the distribution of tones (blacks, mid-tones, whites) in your image, useful for checking exposure and contrast.
- **Focus Assist (Peaking):** Highlights sharp edges in your image, making it easier to achieve critical focus.
- **False Color:** Assigns different colors to specific exposure levels, allowing for quick and accurate exposure adjustments.
- **Image Flip:** Flips the image horizontally or vertically, useful when mounting the monitor in various orientations.
- **3D LUT Loading:** Allows you to import and apply custom Look-Up Tables to preview your desired color grade directly on the monitor.

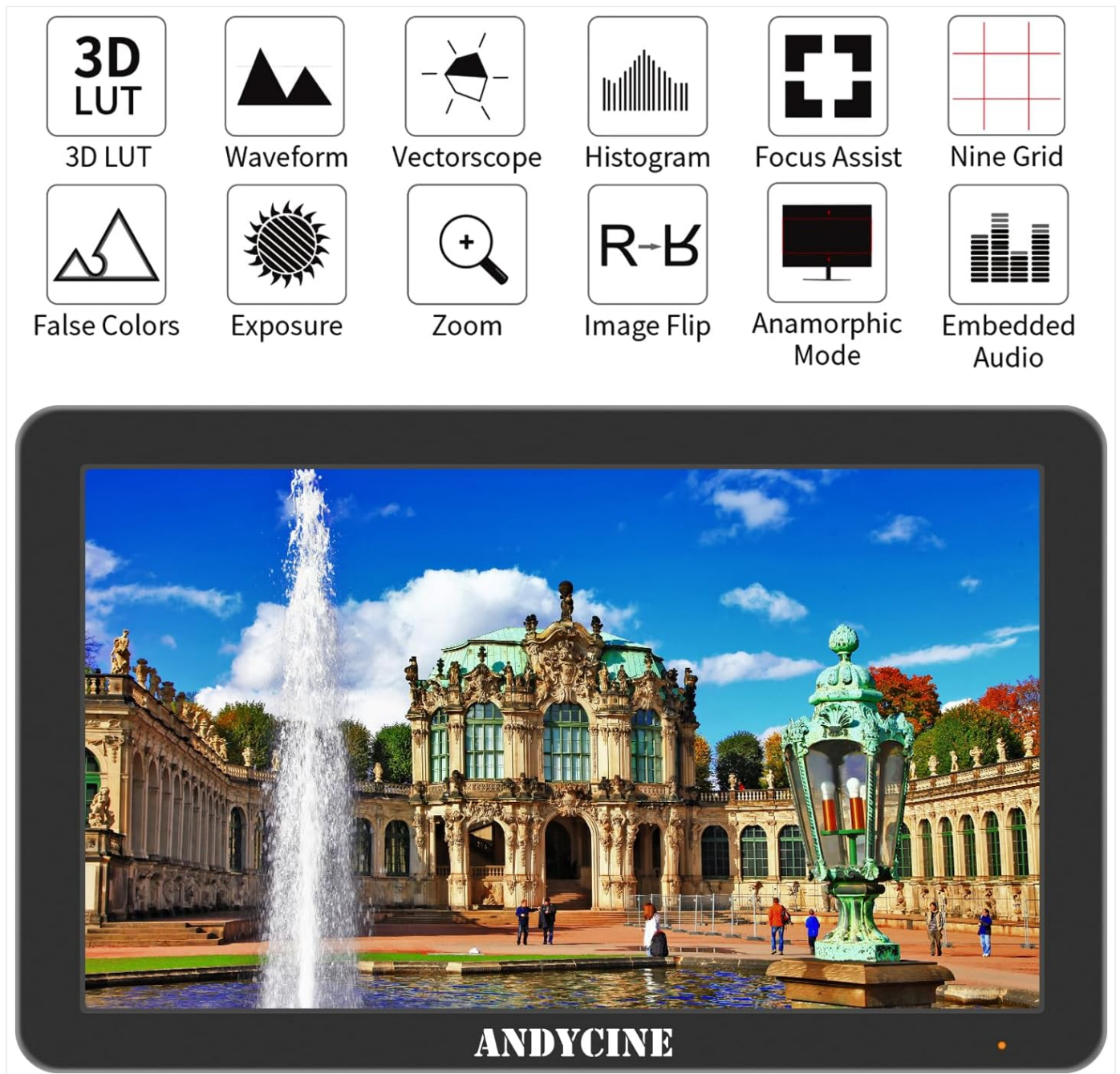


Figure 7: Advanced Monitoring Features Icons.

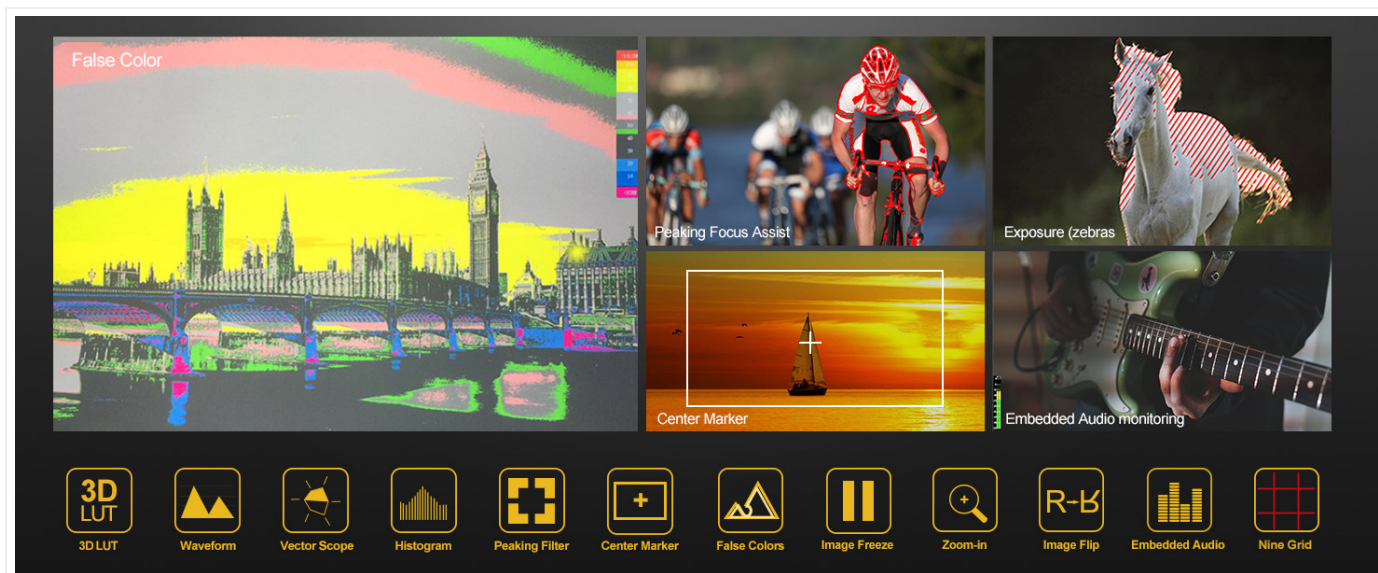


Figure 8: Visual examples of advanced monitoring features.

3D LUT OUTPUT



Figure 9: 3D LUT Output comparison.

MAINTENANCE

Proper maintenance ensures the longevity and optimal performance of your ANDYCINE T6 monitor.

- **Cleaning:** Use a soft, lint-free cloth to clean the screen and body. For stubborn smudges, a screen-specific cleaning solution can be applied to the cloth (never directly to the screen).
- **Storage:** When not in use, store the monitor in its included carry case to protect it from dust, scratches, and impacts.
- **Temperature:** Avoid exposing the monitor to extreme temperatures or high humidity. Operate and store within recommended environmental conditions.
- **Handling:** The aluminum shell provides durability, but avoid dropping or subjecting the monitor to severe physical shocks.

TROUBLESHOOTING

If you encounter issues with your ANDYCINE T6 monitor, refer to the following common troubleshooting steps:

Problem	Possible Cause	Solution
Monitor does not power on.	Battery depleted or incorrectly inserted; power cable loose or faulty.	Ensure battery is charged and correctly inserted. Check DC or USB-C power connections. Try a different power source.
No signal displayed.	HDMI cable loose or faulty; incorrect input selected; camera output settings.	Verify HDMI cable connection at both ends. Ensure camera is outputting video. Check camera's HDMI output settings (resolution, frame rate). Try a different HDMI cable.
Image is distorted or flickering.	HDMI cable issue; incompatible resolution/frame rate; electromagnetic interference.	Replace HDMI cable. Adjust camera's output resolution/frame rate to a supported format. Move away from strong electromagnetic sources.
Buttons are unresponsive.	Temporary software glitch.	Power off the monitor, wait a few seconds, then power it back on.

If the problem persists after trying these steps, please contact ANDYCINE customer support for further assistance.

SPECIFICATIONS

Feature	Detail
Model Number	T6
Screen Size	6 inches
Resolution	1920x1080P
Panel Type	IPS Display
Viewing Angle	160° wide view
Contrast Ratio	1000:1





Feature	Detail
Refresh Rate	60Hz
HDMI Input/Output	HDMI 2.0 (supports up to 4K@60FPS)
Power Options	NP-F Battery, DC Input (7-24V), USB-C Input (5V)
Mounting Points	Dual 1/4-inch threaded holes
Shell Material	Aluminum
Item Weight	2.12 pounds (approx. 0.96 kg)
Package Dimensions	7.52 x 5.16 x 4.21 inches (approx. 19.1 x 13.1 x 10.7 cm)
Manufacturer	ANDYCINE
First Available Date	April 24, 2024


WARRANTY AND SUPPORT

ANDYCINE is committed to providing high-quality products and excellent customer service. For warranty information and technical support, please refer to the following:

- **Warranty:** Please refer to the warranty card included with your product or visit the official ANDYCINE website for detailed warranty terms and conditions.
- **Customer Support:** For any questions, technical assistance, or troubleshooting beyond this manual, you can contact ANDYCINE customer support through their official website or the contact information provided on your purchase receipt.
- **Online Resources:** Visit the [ANDYCINE Store on Amazon](#) for product updates and additional resources.



<div data-bbox="148 123 279 152"><p>7" FHD 2200nit Ultra Bright Daylight Viewable Field Monitor</p></div> <div data-bbox="148 183 282 273"></div> <div data-bbox="172 302 256 320"><p>User Manual</p></div>	<div data-bbox="341 246 1219 275"><p>7-inch FHD 2200nit Ultra Bright Daylight Viewable Field Monitor User Manual</p></div> <div data-bbox="341 286 1409 396"><p>User manual for the 7-inch FHD 2200nit Ultra Bright Daylight Viewable Field Monitor, detailing features, operation, technical specifications, and troubleshooting. This guide provides comprehensive information for users of the Andycine field monitor.</p></div>
<div data-bbox="127 600 309 853"></div>	<div data-bbox="341 654 1367 683"><p>Canon EOS Rebel T6 / EOS 1300D: Basic Instruction Manual & Wireless Functions Guide</p></div> <div data-bbox="341 694 1473 804"><p>Explore the features of the Canon EOS Rebel T6 and EOS 1300D digital cameras with this comprehensive basic instruction manual. Learn about setup, shooting modes, wireless connectivity, and image transfer.</p></div>
<div data-bbox="135 920 288 1144"></div>	<div data-bbox="341 958 1184 987"><p>Dental Photography Camera Recommendations: A Comprehensive Guide</p></div> <div data-bbox="341 999 1436 1108"><p>A guide to selecting and setting up digital cameras, lenses, and flash systems for high-quality dental photography, focusing on DSLR and point-and-shoot cameras, with recommendations for Canon and Nikon systems.</p></div>
<div data-bbox="127 1207 288 1453"></div>	<div data-bbox="341 1265 890 1294"><p>KAWA Security Camera T6/T6 Pro User Manual</p></div> <div data-bbox="341 1305 1433 1415"><p>Comprehensive user manual for the KAWA Security Camera T6 and T6 Pro, covering basic parameters, package contents, external view, quick setup, network configuration methods (PoE, DC, Wi-Fi), NVR integration, installation, notes, and frequently asked questions.</p></div>

	<p>DS-2 Wi-Fi Camera: Installation, Setup, and FAQ Guide</p> <p>Comprehensive guide for the DS-2 Wi-Fi camera, covering installation, setup, device connection, sharing, function settings, troubleshooting, and FCC compliance. Includes model information and warranty details.</p>