

Manuals.plus /

› VOTATU /

› VOTATU PMD504-G Micro Green Dot Sight Instruction Manual

VOTATU PMD504-G

VOTATU PMD504-G Micro Green Dot Sight Instruction Manual

1. PRODUCT OVERVIEW

The VOTATU PMD504-G is a micro green dot reflex sight designed for rapid target acquisition and accurate aiming. It features a durable aluminum housing, multiple reticle options, and a convenient side-loading battery compartment. This sight is compatible with RMR/SRO footprints and includes a Picatinny mount adapter for versatile application.



Figure 1: VOTATU PMD504-G Micro Green Dot Sight, showcasing its compact design and green reticle.

2. PACKAGE CONTENTS

- VOTATU PMD504-G Micro Green Dot Sight

- Picatinny Mount Adapter
- Protective Cover
- CR1632 Battery
- Lens Cleaning Cloth
- Mounting Screws (various sizes)
- Adjustment Tools (Torx wrench, flathead screwdriver)
- User Manual



Figure 2: All items included in the VOTATU PMD504-G product package.

3. SPECIFICATIONS

Feature	Description
Model Name	PMD504-G
Brand	VOTATU
Color	Black
Material	Aircraft-grade Aluminum
Reticle Options	2 MOA Dot, 62 MOA Circle, 2 MOA Dot & 62 MOA Circle
Illumination Settings	10 (8 Daylight, 2 Night Vision compatible)
Battery Type	CR1632
Battery Life	Up to 50,000 hours (on lowest setting)
Shake Awake	Yes (activates after 225 seconds of no motion)
Mounting Footprint	RMR/SRO compatible
Included Mount	Picatinny Mount Adapter
Waterproof Rating	IPX7
Fogproof/Shockproof	Yes
Dimensions (L x W x H)	Approx. 1.97 x 1.2 x 1.43 inches (50mm x 30.5mm x 36.3mm)
Weight	Approx. 0.06 lbs (29g)

DIMENSIONS

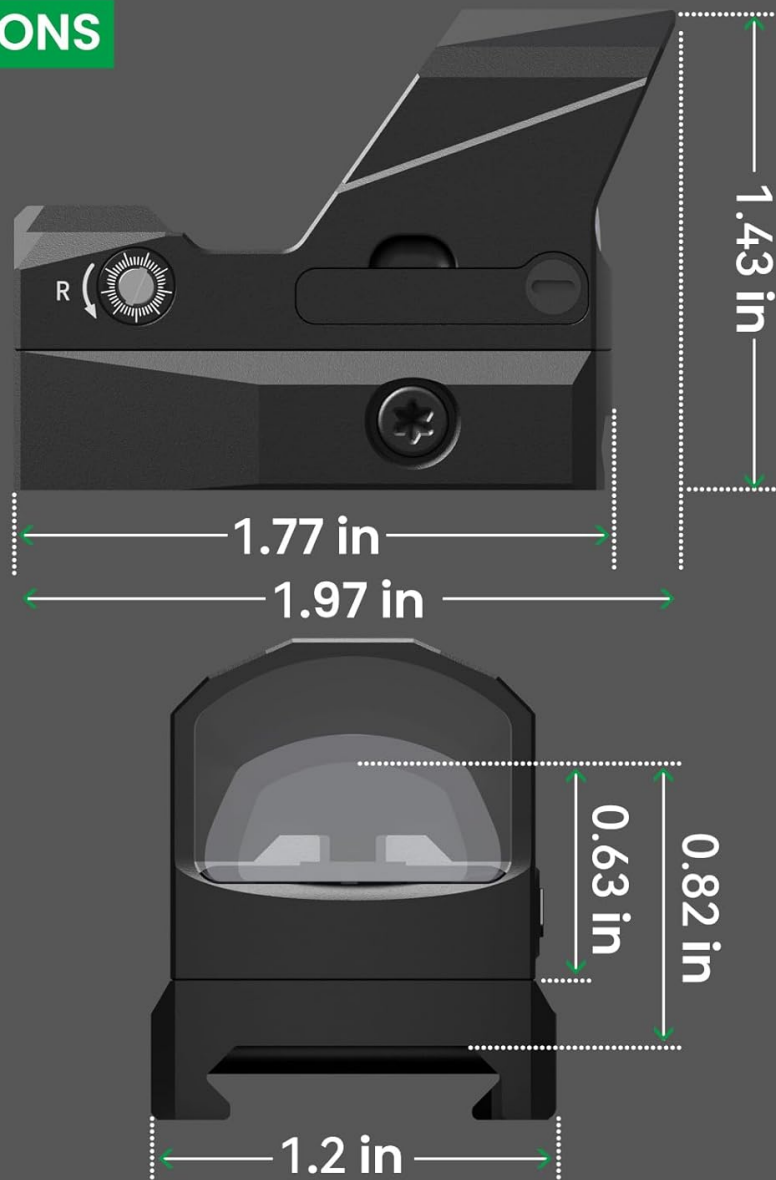


Figure 3: Detailed dimensions of the PMD504-G sight.

4. SETUP AND INSTALLATION

4.1 Mounting the Sight

The PMD504-G is designed with an RMR/SRO compatible footprint. Ensure your firearm's slide has the correct cut or use an appropriate adapter plate (sold separately) if needed. The included Picatinny mount adapter allows for installation on Picatinny rails.

1. Identify the correct mounting screws from the provided assortment that fit your firearm and the sight.
2. Securely attach the sight to your firearm's slide or the Picatinny mount adapter using the appropriate screws. Apply blue Loctite to mounting screws for added security, if desired.
3. Ensure the sight is firmly seated and all screws are tightened to the manufacturer's recommended torque specifications (typically 15 inch-lbs).

IMPORTANT NOTES ABOUT MOUNTING

(Check if the red dot fits your pistols)

Compatible with Footprint like:

Holosun 407C/507C/508T, Trijicon RMR/SRO

Optical Ready Cut or Mount Plate



Won't Compatible with Footprint like:

Doctor Cut, Vortex Viper / Venom, Burris Fastfire, RMS / RMSc



Please check your pistol manual or contact the manufacturer for the slide cut mount/plate information.

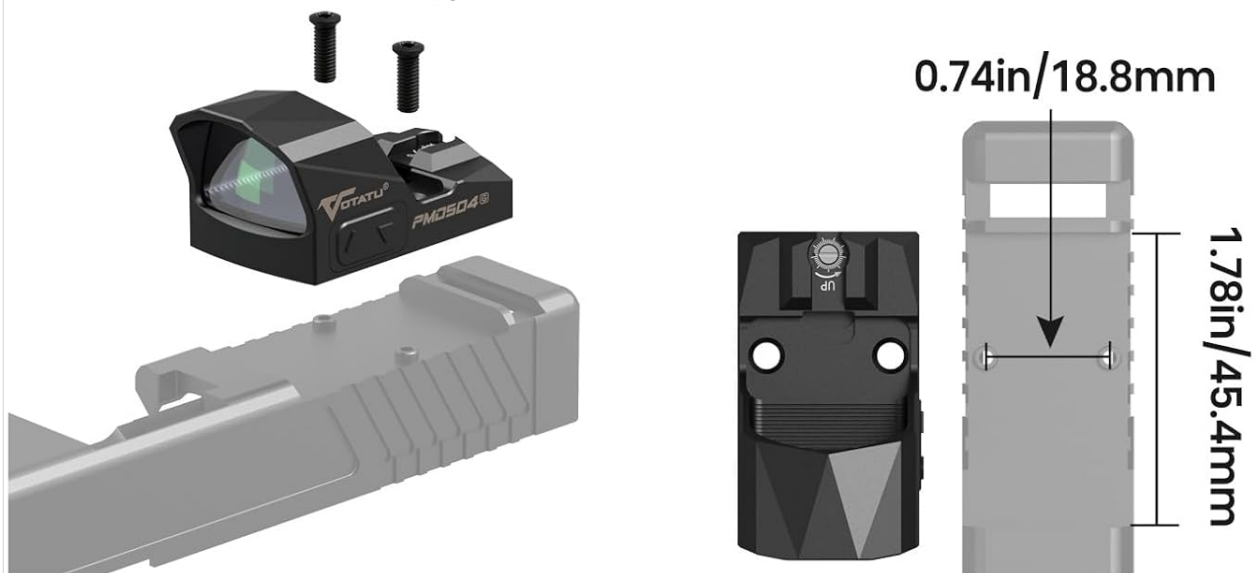


Figure 4: Illustration of RMR footprint compatibility and incompatible footprints.

4.2 Battery Installation

The PMD504-G features a convenient side-loading battery tray, allowing for battery replacement without removing the sight from the firearm, thus preserving your zero.

1. Locate the battery tray on the side of the sight.
2. Using a small flathead screwdriver or the provided tool, carefully open the battery tray.
3. Insert one CR1632 battery with the positive (+) side facing upwards.
4. Close the battery tray securely.

NO MORE RE-ZEROING

Convenient Tray Battery Compartment allowing for quick battery replacement without having to remove the sight from the firearm.



Figure 5: Steps for installing the CR1632 battery into the side-loading tray.

5. OPERATING INSTRUCTIONS

5.1 Power On/Off

- **Power On:** Press either the 'Up' (▲) or 'Down' (▼) button to turn on the sight.
- **Power Off:** Press and hold the 'Down' (▼) button for approximately 3 seconds.

5.2 Brightness Adjustment

- Use the 'Up' (▲) button to increase brightness.
- Use the 'Down' (▼) button to decrease brightness.
- The sight offers 10 illumination settings: 8 for daylight conditions and 2 for night vision compatibility.

5.3 Reticle Selection

The PMD504-G features a Multiple Reticle System (MRS) with three options:

- 2 MOA Dot
- 62 MOA Circle

- 2 MOA Dot & 62 MOA Circle Combination

To cycle through the reticle options, press and hold the 'Up' (▲) button for approximately 3 seconds.

MULTIPLE RETICLE SYSTEM 10 ILLUMINATION SETTINGS






		
GREEN CIRCLE DOT	GREEN DOT	GREEN CIRCLE
2MOA Center Dot 62MOA Circle	2MOA Center Dot	62MOA Circle

Figure 6: Visual representation of the three available reticle options.

5.4 Shake Awake Feature

The Shake Awake feature conserves battery life by automatically entering sleep mode after approximately 225 seconds (3 minutes 45 seconds) of no motion. The sight will instantly reactivate to the previously set brightness and reticle upon sensing any movement.

AUTO AWAKE

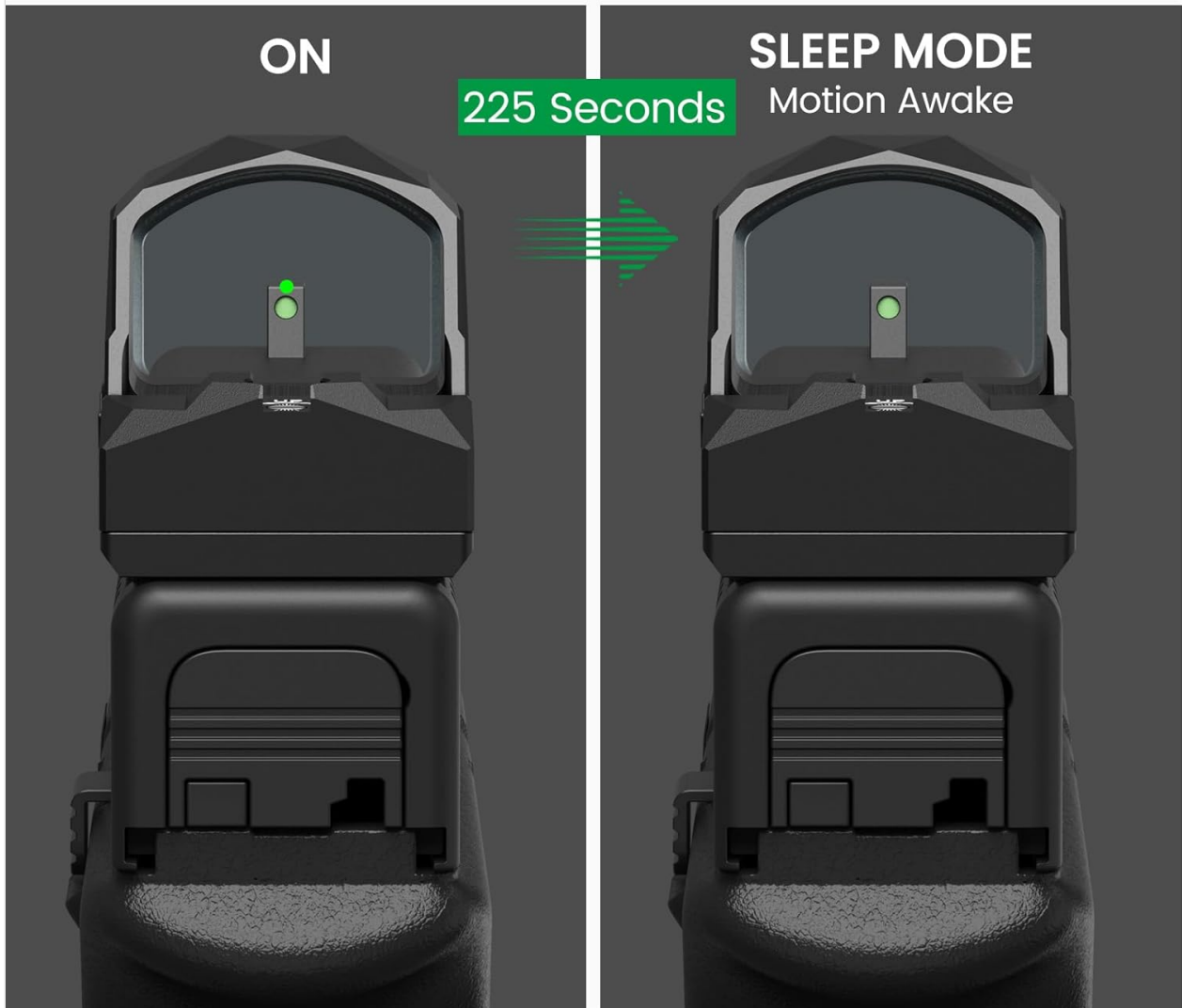


Figure 7: Illustration of the Shake Awake feature, showing the sight entering sleep mode and reactivating with motion.

Video 1: A user demonstrating the multiple reticle options and brightness levels of the PMD504-G sight.

6. ZEROING & ADJUSTMENTS

The PMD504-G features precise windage and elevation adjustments to align your point of impact (POI) with your point of aim (POA).

- **Elevation Adjustment:** The 'UP' adjustment screw is located on the top of the sight. Turning the screw clockwise moves the POI down; turning counter-clockwise moves the POI up.
- **Windage Adjustment:** The 'R' (Right) adjustment screw is located on the right side of the sight. Turning the screw clockwise moves the POI right; turning counter-clockwise moves the POI left.
- Each click of the adjustment screws corresponds to 1 MOA (Minute of Angle).
- The maximum total adjustment range for both windage and elevation is 45 MOA.

Note: When using a laser bore sight for zeroing, the adjustment direction will be reversed. If you encounter sudden resistance when adjusting, do not force the screw further, as this can damage the mechanism and make it impossible to zero the sight.



Figure 8: Location of elevation and windage adjustment screws on the PMD504-G.

7. MOUNTING COMPATIBILITY

The VOTATU PMD504-G features an RMR/SRO compatible footprint. It is crucial to verify your handgun's slide cut or mounting plate before installation.

- **Compatible with Footprints:** RMR/SRO, Holosun 407C/507C/508T.
- **Not Compatible with Footprints:** Doctor Cut, Vortex Viper/Venom, Burris Fastfire, RMS/RMSc.

If your pistol slide does not have an RMR footprint, you will need to purchase an RMR mounting plate separately to use this sight. Consult your pistol manual or contact the manufacturer for slide cut/mounting plate information.

7.1 Pistol/Handgun Compatibility Reference

The following table provides a general reference for pistol compatibility. All adapter plates must be purchased separately.

Brand	Compatible Models	Required Adapter Plate	Installation Type
Glock	Standard MOS GL (G17MOS, G19MOS...)	GL 02 RMR Adapter Plate	Plate Required
Walther Arms	Walther PDP Series	Walther RMR Adapter Plate	Plate Required
Springfield Armory	XD-M Elite OSP	Springfield RMR Adapter Plate	Plate Required
Springfield Armory	Echelon Series	Springfield RMR Pin Set & Screw Kit	Plate Required
Sig Sauer	P320 Series	DPP to RMR Adapter Plate	Plate Required
Smith & Wesson	C.O.R.E. Series	S&W RMR Adapter Plate	Plate Required

FN	502/509/510 MRD & Tactical Series/FNX Tactical Series	FN RMR Adapter Plate	Plate Required
CZ	CZ P-10 C/F OR Series/Shadow 2 OR	CZ RMR Adapter Plate	Plate Required
Beretta	Beretta 80X/90X/APX A1 Models	Beretta RMR Adapter Plate	Plate Required
HK	VP9 Series Optic Ready Models	HK RMR Adapter Plate	Plate Required
Canik	Rival Series/TP9 SFX/TTI Combat Models	Canik RMR Adapter Plate	Plate Required
Ruger	Ruger 5.7 Series	Ruger RMR Adapter Plate	Plate Required
Ruger	Ruger American Competition Models	Doctor to RMR Adapter Plate	Plate Required
Taurus	Taurus G3 T.O.R.O Series, Taurus TX 22 T.O.R.O/Competition Series	Taurus RMR Adapter Plate	Plate Required
PSA	PSA Dagger Full Size/Compact Models with RMR Slide	None	Direct Mount Available
Shadow System	MR920/DR920/XR920/DR920P Models with Shadow System Multi-Footprint Optic Cut	None	Direct Mount Available
Alpha Foxtrot	AF-C Polished Black DLC Models with RMR Optic Cut	None	Direct Mount Available
Staccato	Staccato P/XC/XL Models	Staccato Optic Mounting Kit	Plate Required
Laugo Arms	Alien Retro/Creator Models	Laugo Arms Alien Retro Universal Optic Plate	Plate Required
Zev Technologies	Zev OZ9/OZ9C Models with RMR Cut	None	Direct Mount Available
IWI	IWI Masada/Masada Tactical Models	IWI Masada RMR Optic Plate	Plate Required

If the provided screws do not fit your setup, contact VOTATU customer support with your firearm make/model, slide cut specifications, and a photo of the screw.

8. MAINTENANCE

- **Cleaning:** Use the provided soft cloth to gently wipe the lens surface. For stubborn smudges, a small amount of lens cleaner or alcohol can be applied to the cloth, then gently wipe. Avoid abrasive materials.

- **Storage:** When not in use, store the sight with the protective cover installed to prevent scratches and dust accumulation.
- **Battery Check:** Periodically check the battery level and replace the CR1632 battery as needed to ensure optimal performance.

9. TROUBLESHOOTING

Problem	Possible Cause	Solution
Reticle does not illuminate or behaves erratically.	Low or dead battery. Incorrect battery installation. Loose battery cap.	Check battery level and replace if necessary. Ensure CR1632 battery is installed with (+) side up. Tighten battery cap securely.
Sight loses zero after firing.	Mounting screws are loose.	Ensure all mounting screws are tightened securely to the recommended torque. Consider using threadlocker.
Reticle appears distorted or blurry.	Lens is dirty. Astigmatism (user's vision).	Clean the lens with the provided cloth. If distortion persists, it may be due to astigmatism; consult an eye care professional.
Cannot adjust windage/elevation.	Adjustment screw is at its limit or damaged.	Do not force adjustment screws. If resistance is met, the screw may be at its maximum travel. If suspected damage, contact support.

10. WARRANTY & SUPPORT

VOTATU products are designed for durability and performance. For any issues, questions, or support needs, please contact VOTATU customer service.

- **Warranty:** Our products typically come with a two-year warranty against manufacturing defects. Please retain your proof of purchase.
- **Contact Support:** Refer to the contact information provided in your product packaging or visit the official VOTATU website for assistance.