



Manuals.plus /

- › EZ EAR /
- › EZ EAR KZ AZ09 Wireless IEM Bluetooth Adapter (C-Pin) Instruction Manual

EZ EAR KZ AZ09

EZ EAR KZ AZ09 Wireless IEM Bluetooth Adapter (C-Pin) Instruction Manual

Model: KZ AZ09

INTRODUCTION

Thank you for choosing the EZ EAR KZ AZ09 Wireless IEM Bluetooth Adapter. This manual provides detailed instructions for the setup, operation, and maintenance of your new device. Please read this manual thoroughly before use to ensure optimal performance and longevity of your adapter.

KZ-AZ09

TWS HD Bluetooth Ear hook



Image: The KZ AZ09 Wireless IEM Bluetooth Adapter earhooks and charging case.

PRODUCT OVERVIEW

The KZ AZ09 is a wireless Bluetooth adapter designed to convert compatible In-Ear Monitors (IEMs) into wireless headphones. It features Bluetooth 5.4 technology for stable connectivity and supports AAC audio encoding for high-fidelity sound. The adapter comes with a portable charging case for extended battery life.

Key Features:

- **Bluetooth 5.4 Module:** Provides faster transmission speeds and enhanced connection stability.
- **AAC Audio Encoding:** Ensures high-definition audio transmission.
- **Long Battery Life:** Up to 6 hours of usage per charge for the earhooks, with the 800mAh charging case providing up to 7 additional recharges, totaling 42 hours of continuous music time.
- **Dual-Channel Transmission:** Lowers latency and allows individual use of earhooks. Includes a high-performance mode for gaming.
- **Lightweight Design:** Each earhook weighs approximately 4.5g for comfortable wear.

- **Multi-functional Control:** A single press button on each earhook manages calls, playback, and music switching.



Image: Diagram illustrating the Bluetooth 5.4 chip for stable connection.



Image: Visual representation of AAC Advanced Audio Coding Transmission Technology.

SETUP INSTRUCTIONS

1. Connecting to IEMs

The KZ AZ09 adapter is designed for C-pin 0.75MM compatible In-Ear Monitors. Carefully align the C-pin connectors on the adapter with the ports on your IEMs and push them firmly until they are securely connected. Ensure the correct orientation to avoid damage.

AAC Advanced Audio Coding Transmission Technology



Image: Diagram showing C-Pin compatibility for various KZ and CCA IEM models.

Note: This specific model is for C-pin IEMs. Ensure your IEMs are compatible with the C-pin 0.75MM connector. Compatible models include KZ ZSN PRO, ZSN PRO-X, ZS10 PRO, ZS10 PRO X, ZS12 PRO X, ZS10 PRO 2, EDX PRO, CASTOR, ZAR, PR2, ZAX, AS24, AS24 PRO, ZAS, ZS-X, CCA CRA, and C12.



Image: The KZ AZ09 earhooks shown connected to compatible In-Ear Monitors.

2. Initial Charging

Before first use, place both earhooks into the charging case and connect the case to a power source using the provided USB cable. The indicator lights on the case will show the charging status. A full charge takes approximately 1 hour.

3. Bluetooth Pairing

1. Ensure the earhooks are charged and placed in the charging case.
2. Open the charging case lid. The earhooks will automatically enter pairing mode.
3. On your device (smartphone, tablet, computer), go to the Bluetooth settings.
4. Search for available devices and select "AZ09" from the list.
5. Once connected, your device will show "Connected" next to "AZ09".

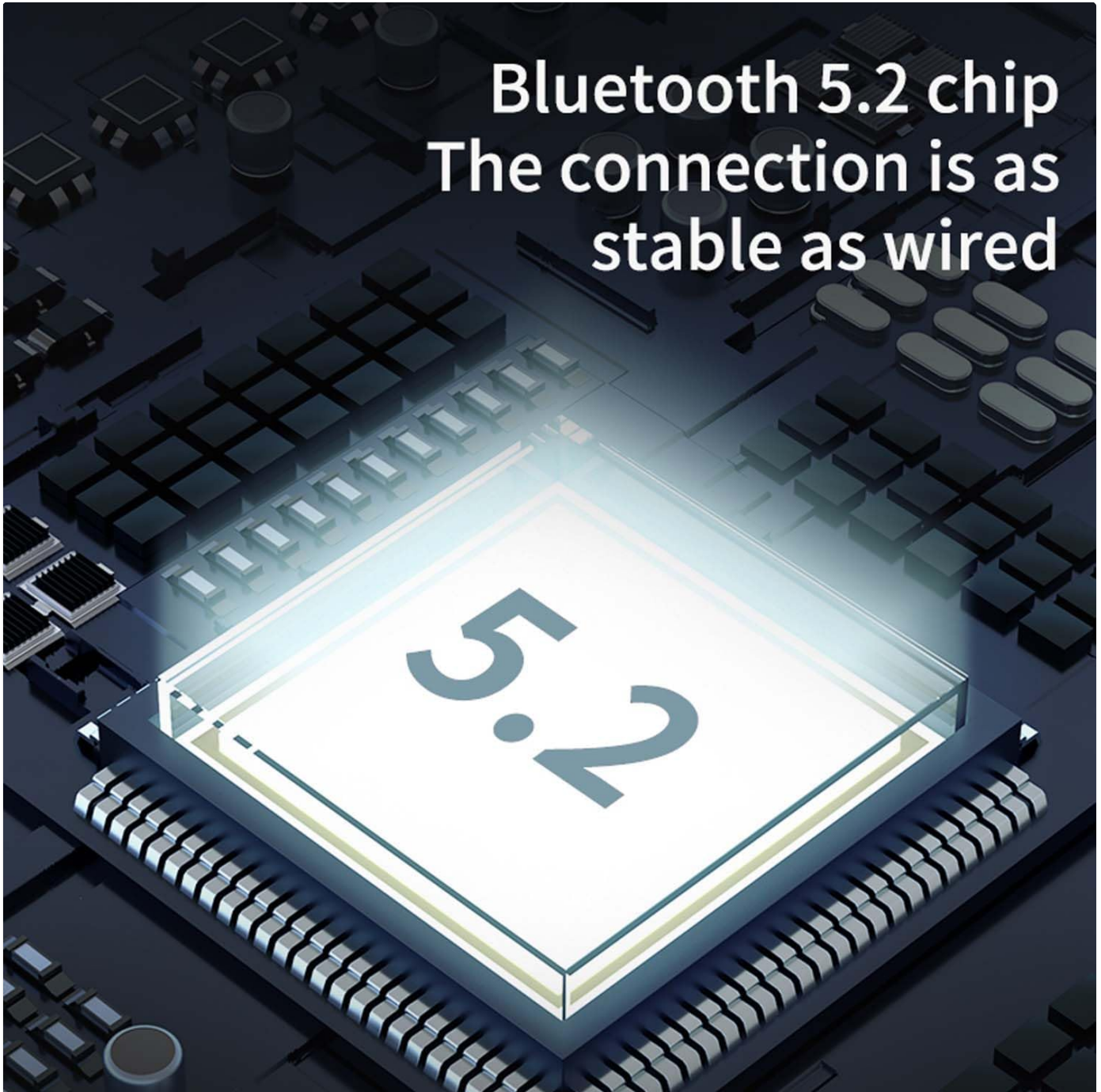


Image: A smartphone screen displaying the Bluetooth settings with "AZ09" listed as connected.

OPERATING INSTRUCTIONS

Button Functions:

- **Play/Pause:** Click the multi-functional button once.

- **Previous Song:** Double-click the left earhook button.
- **Next Song:** Double-click the right earhook button.
- **Start Voice Assistant (Siri/Google Assistant):** Long press the button for 2 seconds.
- **Answer/Hang Up Call:** Click the button once during an incoming call or during an active call.
- **Refuse Call:** Long press the button on an incoming call.



Image: Visual guide to the multi-functional button controls on the earhooks.

Charging Indicators:

The charging case and earhooks feature LED indicators to show battery status.

- **Earhooks in Charging Case:**
 - **Red Light On:** Earhooks are charging.
 - **Green Light On:** Earhooks are fully charged.
- **Charging Case Battery Level:**
 - **Red Light:** 0-30% capacity.

- **Yellow Light:** 30-70% capacity.
- **Green Light:** 70-100% capacity.
- **Low Battery Warning (Earhooks):** The indicator light on the earhook will flash red 4 times every 30 seconds.

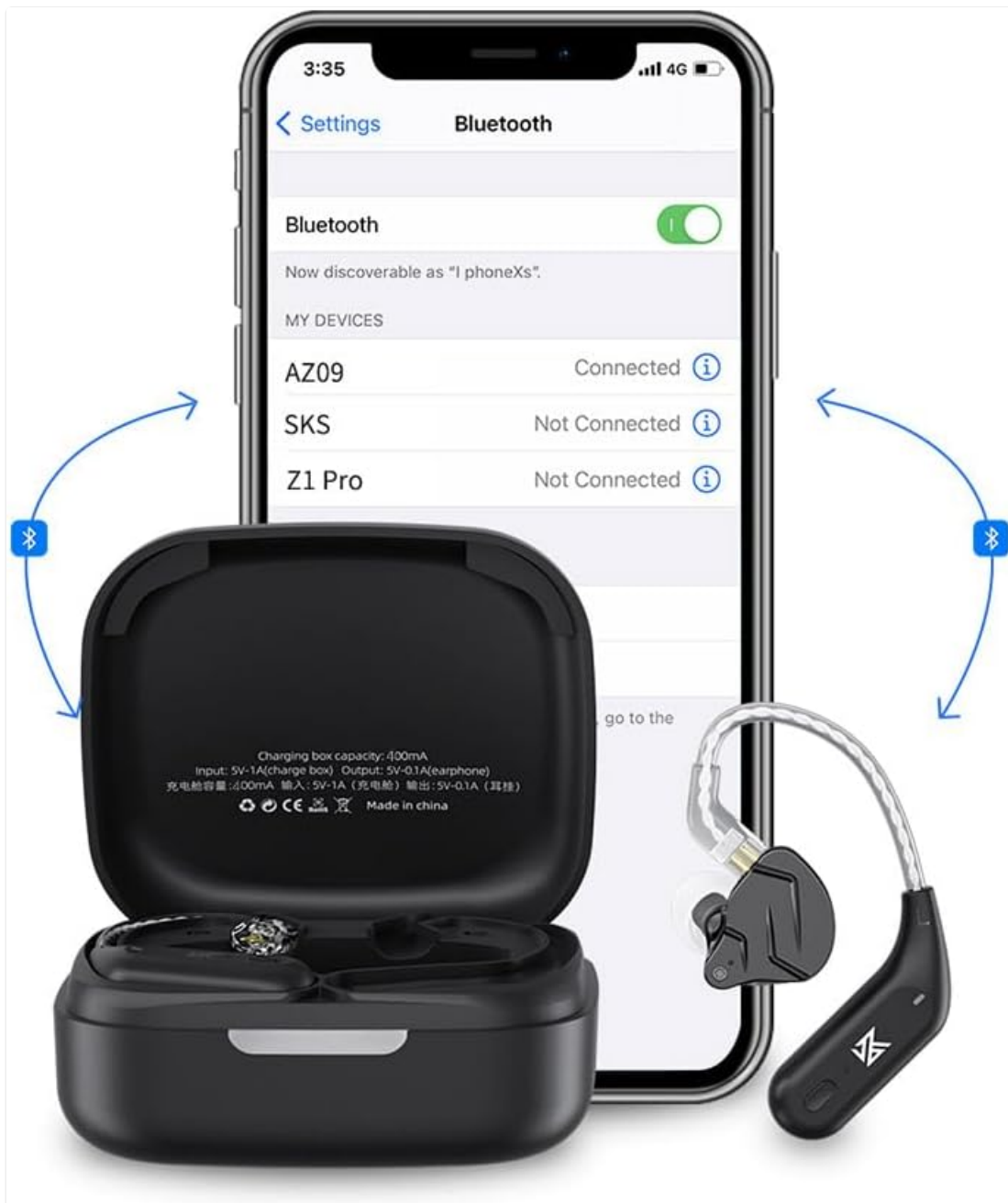


Image: Detailed view of the LED indicators for charging status and battery levels on the earhooks and charging case.

MAINTENANCE

To ensure the longevity and optimal performance of your KZ AZ09 Wireless IEM Bluetooth Adapter, follow these maintenance guidelines:

- **Cleaning:** Use a soft, dry, lint-free cloth to clean the earhooks and charging case. Avoid using abrasive cleaners, solvents, or aerosol sprays.
- **Storage:** When not in use, store the earhooks in their charging case to protect them from dust and physical damage. Store in a cool, dry place away from direct sunlight and extreme temperatures.
- **Water Resistance:** The device is not water-resistant. Avoid exposure to water, moisture, or excessive humidity.
- **Charging:** Only use the provided charging cable or a certified equivalent. Do not attempt to charge with damaged cables or chargers.

- **Handling:** Handle the earhooks and charging case with care. Avoid dropping them or subjecting them to strong impacts.

TROUBLESHOOTING

If you encounter any issues with your KZ AZ09 adapter, please refer to the following common solutions:

Problem	Possible Solution
Cannot pair with device.	<ul style="list-style-type: none">• Ensure earhooks are charged and in pairing mode (open case lid).• Turn off and on Bluetooth on your device.• Forget "AZ09" from your device's Bluetooth list and try pairing again.• Ensure no other devices are actively connected to the AZ09.
Audio cutting out or unstable connection.	<ul style="list-style-type: none">• Ensure your device is within the Bluetooth range (approx. 30 feet).• Minimize obstacles between the adapter and your device.• Check for interference from other wireless devices.• Ensure earhooks are fully charged.
Earhooks not charging.	<ul style="list-style-type: none">• Ensure the charging cable is securely connected to both the case and the power source.• Verify the power source is active.• Check if the charging pins on the earhooks and in the case are clean and free of debris.• Try a different charging cable or power adapter.
No sound or low volume.	<ul style="list-style-type: none">• Increase the volume on both your connected device and the earhooks.• Ensure the IEMs are correctly and securely attached to the earhooks.• Check if the correct audio output is selected on your device.
Microphone not working.	<ul style="list-style-type: none">• Ensure the AZ09 is selected as the input device in your device's audio settings.• Check for any software updates for your connected device.

SPECIFICATIONS

Model Name	KZ AZ09
Connectivity Technology	Wireless, Bluetooth
Bluetooth Version	5.4
Audio Driver Type	Balanced Armature Driver (IEM dependent)
Battery Life (Earhooks)	Up to 6 Hours
Battery Life (with Charging Case)	Up to 42 Hours (7 recharges from 800mAh case)
Charging Time	Approximately 1 Hour
Item Weight (each earhook)	4.5 Grams
Control Method	Touch/Button
Noise Control Features	Sound Isolation
Material	Plastic
Included Components	Wireless Charging Case
Manufacturer	EZ EAR

WARRANTY AND SUPPORT

For warranty information or technical support, please refer to the documentation included with your purchase or contact the seller directly. You can also visit the official EZ EAR store on Amazon for further assistance and product information.

Visit the EZ EAR Store on Amazon

