

podofo 1 Din Compatible

Podof0 9-inch Detachable IPS Screen Car Stereo User Manual

Model: 1 Din Compatible

1. INTRODUCTION

Thank you for choosing the Podof0 9-inch Detachable IPS Screen Car Stereo. This device offers a comprehensive in-car entertainment and connectivity solution, featuring wireless Apple Carplay and Android Auto, Bluetooth, FM radio, Mirror Link, Steering Wheel Control (SWC), AUX input, EQ sound adjustment, and support for a rear view camera. This manual provides detailed instructions for installation, operation, maintenance, and troubleshooting to ensure optimal performance and user experience.

2. SAFETY INFORMATION

- Read all instructions carefully before installation and operation.
- Professional installation is recommended for car electronics to prevent damage to the vehicle or the device.
- Do not operate the device in a way that distracts you from driving. Always prioritize road safety.
- Ensure all wiring is correctly connected to avoid short circuits or electrical hazards.
- Keep the device away from water, moisture, and extreme temperatures.
- Use only specified power cables and accessories.

3. PACKAGE CONTENTS

Verify that all items are present in the package:

- Podof0 9-inch Car Stereo Unit with Detachable Screen
- Power Cable
- Horn Cable
- Mounting Brackets
- User Manual
- Microphone (MIC)

- 12-LED Rear View Camera



Figure 3.1: Included accessories and components.

4. PRODUCT OVERVIEW

The Podofo car stereo features a 9-inch high-definition detachable touchscreen panel. The adjustable base allows for screen removal and height adjustment to suit various viewing preferences. The installation size is 178mm (L) x 50mm (H).

Product Size & Detachable Screen

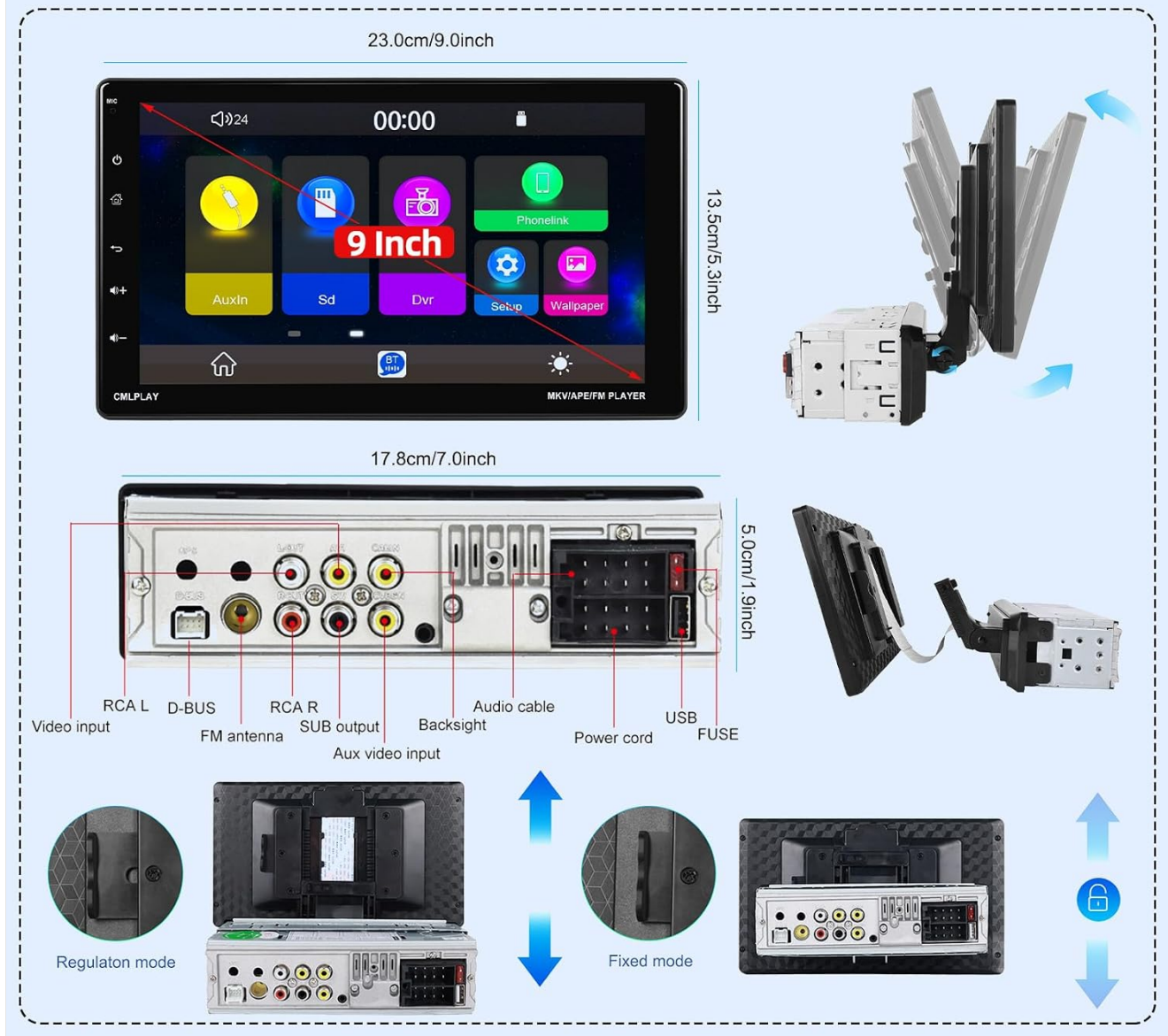


Figure 4.1: Product dimensions and rear panel connections.

5. SETUP

5.1 Installation

This unit is designed for a single DIN installation slot. Ensure your vehicle has a compatible slot. Secure the main unit using the provided mounting brackets. Connect all necessary cables as per the wiring diagrams.

5.2 Wiring Instructions

Proper wiring is crucial for the stereo's functionality. Refer to the diagram below for general wiring connections.

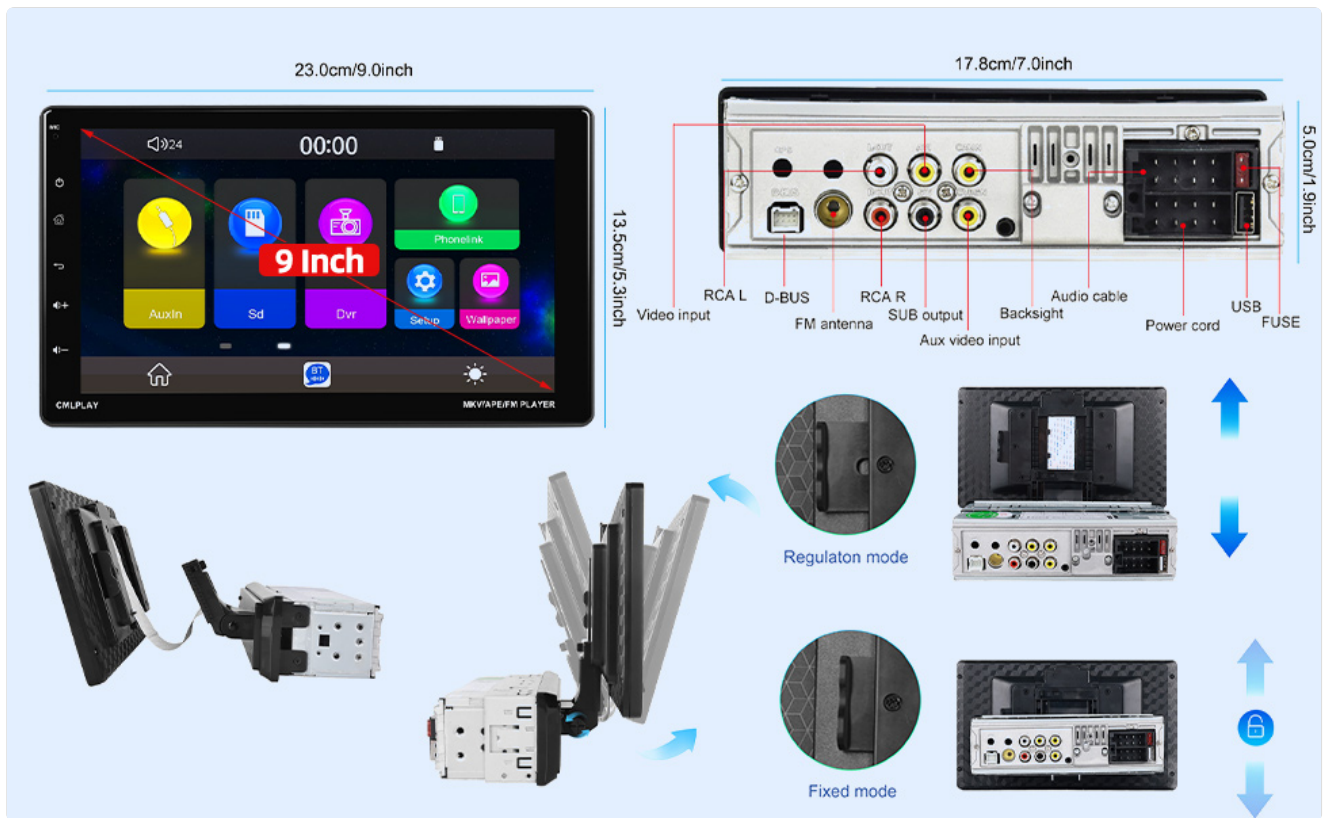


Figure 5.1: General wiring connections.

5.3 Rear View Camera Wiring

Connect the included 12-LED rear view camera according to the following steps:

1. Connect wire H to A6 (the A6 wire is the BACK wire inside the power cable).
2. Connect wires J and K to the positive pole of the backup lamp (BUL).
3. Connect wire L to grounding or leave unconnected if not required.

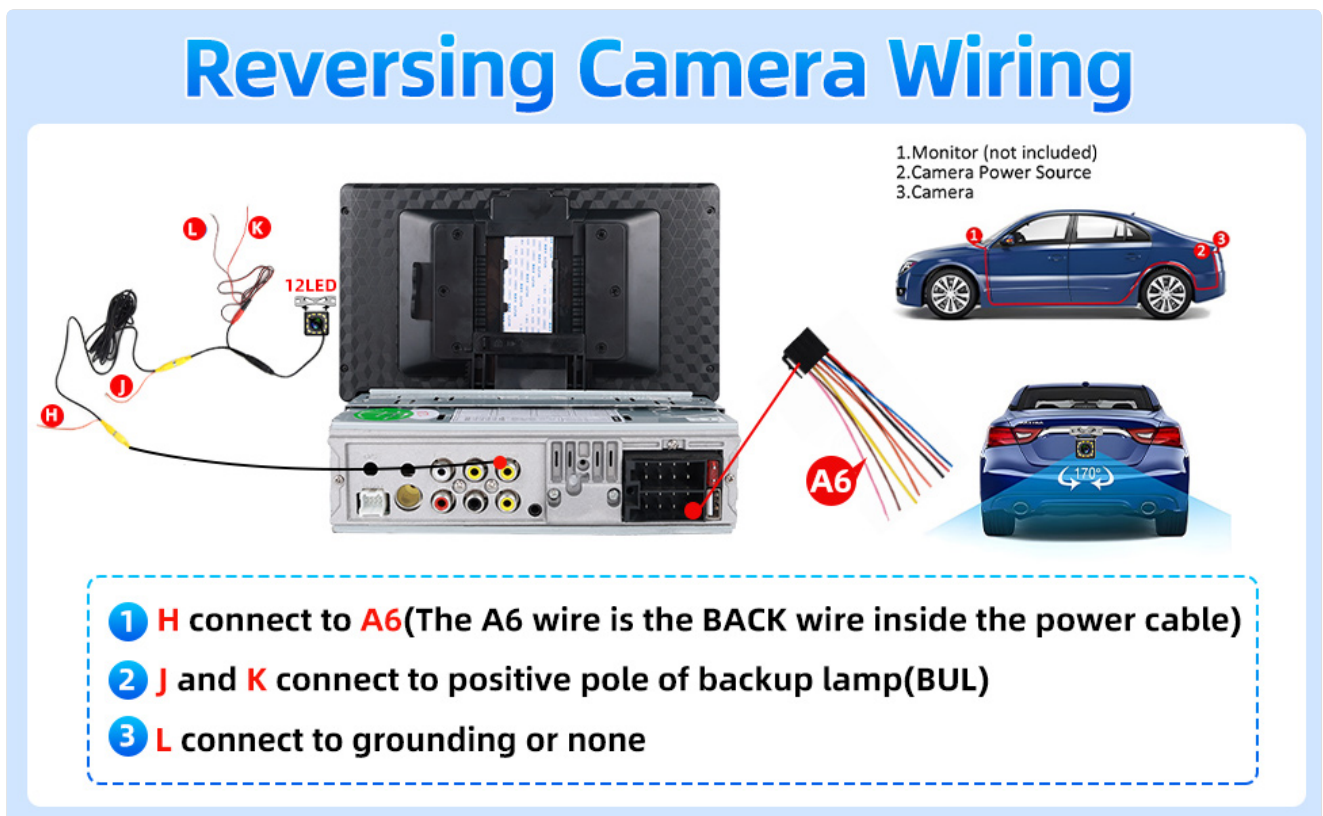


Figure 5.2: Rear view camera wiring details.

6. OPERATING INSTRUCTIONS

6.1 Wireless Apple Carplay / Android Auto

This car radio supports wireless Apple Carplay and wireless Android Auto. Connect your mobile phone to access voice commands, applications, contacts, GPS map navigation, music, videos, and other information directly on the stereo display.

- Ensure Bluetooth and Wi-Fi are enabled on your smartphone.
- Pair your phone with the car stereo via Bluetooth.
- Follow the on-screen prompts to initiate Carplay or Android Auto.



Figure 6.1: Wireless Carplay and Android Auto interface.

6.2 Bluetooth Connection

Integrated Bluetooth 4.0 supports A2DP hands-free calling, music playback, and automatic phonebook synchronization.

- Go to the Bluetooth settings on the car stereo.

- Enable Bluetooth on your mobile phone and search for available devices.
- Select the car stereo from the list and pair.
- Once connected, you can make hands-free calls and stream audio.



Bluetooth Connection

Can connect to phone, and handsfree calling, more safer when driving car, bluetooth music play.

Mirror Link

Support IOS/Android mobile phone to use mobile phone interconnection function.



Figure 6.2: Bluetooth hands-free calling.

6.3 FM Radio

The FM radio supports frequencies from 87.5-108 MHz, offering automatic station search and storage for up to 18 favorite stations.

- Select the 'Radio' icon from the main menu.
- Use the scan function to automatically search for and save available stations.
- Manually tune or select from your preset stations.

Steering wheel control

Quickly switch functions which you want with your car's steering wheel, more convenient.



EQ Function

EQ adjustment, a variety of surround sound field modes strong bass, soft midrange and bright treble and a transparent stereo sound.



Figure 6.3: FM Radio interface and rear camera view.

6.4 Mirror Link

The Mirror Link function is compatible with both Android and iOS mobile devices, allowing screen mirroring to the car stereo display.

- Connect your smartphone via USB cable.
- Enable USB debugging (for Android) or trust the device (for iOS) if prompted.
- The phone screen will be mirrored on the car stereo display.

HD Backup Camera

A 170° Wide view, HD night backup camera included.



FM Radio

FM and online radio with 18 preset radio stations.



Figure 6.4: Mirror Link functionality.

6.5 Steering Wheel Control (SWC)

The unit supports steering wheel control (SWC) learning for convenient operation while driving. This allows you to map functions like volume, track change, and mode selection to your vehicle's steering wheel buttons.

- Access the SWC settings in the system menu.
- Follow the on-screen instructions to program each steering wheel button.

Product List



Power Cable



Horn Cable



Mounting Bracket



User Manual



MIC



12LED Camera

Figure 6.5: Steering Wheel Control and EQ Function interfaces.

6.6 EQ Function

Adjust the sound output using the built-in equalizer (EQ) function. This allows for customization of bass, midrange, and treble to achieve your preferred audio profile.

- Navigate to the EQ settings from the main menu or audio settings.
- Choose from preset EQ modes (e.g., Pop, Rock, Classic) or manually adjust frequency bands.

6.7 Rear View Camera

The included 12-LED 100% waterproof rear view camera provides a clear view behind your vehicle. When reversing, the display automatically switches to the rear camera view.

- Ensure the camera is properly wired as described in Section 5.3.
- The camera view will activate automatically when the vehicle is put into reverse gear.

7. MAINTENANCE

- Clean the screen with a soft, dry cloth. Avoid abrasive cleaners or solvents.
- Keep the unit free from dust and debris.
- Periodically check cable connections to ensure they are secure.
- The detachable screen should be handled with care to prevent damage to the connectors.

8. TROUBLESHOOTING

Refer to the following common issues and solutions:

- **No Power / Unit Not Turning On:** Check all power connections, including the fuse. Ensure the ignition wire is correctly connected.
- **Blue Screen or Other Display Issues:** Verify the shielded cable connection. Ensure all wiring is correct, as incorrect wiring is a common cause.
- **Rear Camera Not Displaying:** Check the reverse camera wiring and system settings. Ensure the camera's power and video signal cables are properly connected.
- **No GPS Functionality:** This car radio is an MP5 player and does not have a built-in GPS positioning system. Navigation can be achieved through Carplay or Android Auto via your connected smartphone.
- **Wireless Carplay/Android Auto Connection Issues:** Ensure Bluetooth and Wi-Fi are enabled on your phone and the stereo. Try restarting both devices.
- **Sound Distortion or No Audio:** Check speaker wiring and ensure the volume is not muted. Verify EQ settings.

If problems persist after attempting these solutions, please contact customer support.

9. SPECIFICATIONS

Feature	Specification
Product Dimensions	17.8 x 5 x 5 cm
Weight	1.3 kg
Model Number	1 Din Compatible
Connectivity Technology	USB, Bluetooth
Controller Type	Remote Control, Touchscreen
Special Feature	9-inch Detachable Capacitive Touchscreen
Compatible Devices	Smartphone
Connector Type	3.5 mm Jack, USB Type A, DC Power Jack
Audio Output Mode	Stereo
Surround Sound Channel Configuration	4.0 or 4.1
Video Encoding	H.264, H.263, MP4, RM, RMVB, VOB, VCD, DAT, DIVX, FLV, 3GP, AVI, ASF, MPEG
Output Power	45 Watts (per channel)

Number of Channels	4
Total Output Watts	180 Watts
Internet Applications	All applications supported by Apple Carplay & Android Auto
Control Method	Touch
Wireless Technology	Bluetooth
Supported Formats	AVI, WAV, WMA

10. WARRANTY AND SUPPORT

This product comes with a 2-year warranty. We offer friendly and professional customer service, lifetime technical support, and a 30-day return or exchange policy. For product inquiries or assistance, please do not hesitate to contact us via email. We are committed to providing a satisfactory response within 24 hours.