

Intermatic PE723P

Intermatic PE723P 7-Day Electronic Wi-Fi Pool Timer Instruction Manual

Model: PE723P

[Fi](#) [Introduction](#) [Safety](#) [Features](#) [Installation](#) [Setup & Wi-](#)
[Operation](#) [Maintenance](#) [Troubleshooting](#) [Specifications](#) [Support](#)

1. INTRODUCTION

The Intermatic PE723P is a 7-day electronic Wi-Fi pool timer designed for automated control of pool and spa equipment. This device allows for precise scheduling of pumps, lighting, sanitizers, and auxiliary devices across two independent circuits. Remote management is available via the Intermatic Connect mobile application and voice control integration. The PE723P features a durable, weather-resistant enclosure and automatic voltage detection for versatile installation.

2. IMPORTANT SAFETY INFORMATION

WARNING: Risk of Electric Shock. Disconnect power at the circuit breaker or disconnect switch before installing or servicing this device.

- Installation must be performed by a qualified electrician in accordance with all local and national electrical codes.
- Ensure the device is properly grounded.
- Do not operate if the enclosure is damaged.
- Keep the enclosure door closed and secured when not servicing.
- This device is intended for outdoor use and is rated Type 3R for protection against rain, sleet, and external ice formation.

3. PACKAGE CONTENTS

Verify that all components are present before beginning installation:

- Intermatic PE723P Wi-Fi Pool Timer Unit
- Mounting Hardware (screws, anchors)
- Instruction Manual (this document)

4. PRODUCT FEATURES

- **7-Day Digital Programming:** Allows for up to 96 ON/OFF events per day.
- **Wi-Fi Connectivity:** Remote control and scheduling via the Intermatic Connect mobile app.
- **Voice Control:** Compatible with Amazon Alexa for convenient operation.
- **2-Circuit Control:** Independently manage two 30A circuits for various pool/spa equipment.
- **Auto-Voltage Detection:** Automatically adjusts to 120–277 VAC (50/60 Hz) input.
- **Durable Enclosure:** Type 3R plastic enclosure for outdoor environments, operating from -40°F to 158°F.
- **Non-Volatile Memory:** Retains programmed schedules during power outages.
- **LED Status Indicators:** Provides real-time feedback on device status and network connectivity.

5. INSTALLATION

5.1 Mounting the Enclosure

The PE723P is designed for wall mounting. Select a suitable location near the pool/spa equipment, ensuring it is accessible for wiring and operation, and protected from direct sunlight if possible to prolong component life.

1. Open the enclosure door.
2. Mark the desired mounting points on the wall using the pre-drilled holes on the back of the enclosure as a template.
3. Drill pilot holes and insert appropriate anchors if mounting into masonry or drywall.
4. Secure the enclosure to the wall using the provided mounting screws.



Figure 1: Rear view of the PE723P enclosure, illustrating the mounting points for wall installation.

5.2 Wiring the Timer

WARNING: Ensure power is disconnected at the main breaker before proceeding with any wiring.

The PE723P features two independent circuits and auto-voltage detection. Refer to the internal wiring diagram and terminal block for correct connections.

1. Route electrical conduits into the appropriate knockouts on the enclosure.
2. Connect the incoming power supply (120-277 VAC) to the designated LINE terminals.
3. Connect the load wires for Circuit 1 (e.g., pump) to the CIRCUIT 1 terminals.
4. Connect the load wires for Circuit 2 (e.g., lights) to the CIRCUIT 2 terminals.
5. Ensure all connections are tight and secure.
6. Close and secure the enclosure door.



Figure 2: Internal view of the PE723P, showing the terminal block for power and load connections, along with control buttons and LED indicators.



Figure 3: A detailed view of the PE723P's internal control panel, highlighting the MODE button, SERVICE, MANUAL, AUTO, and NETWORK LEDs, RESET button, and circuit control buttons.

6. INITIAL SETUP AND WI-FI CONNECTION

6.1 Power On

After completing all wiring, restore power to the timer at the circuit breaker. The timer will power on and the LED indicators will illuminate.

6.2 Intermatic Connect App Installation

1. Download the **Intermatic Connect** app from your mobile device's app store (iOS or Android).
2. Create an account or log in if you already have one.

6.3 Connecting to Wi-Fi

Follow the in-app instructions to add your PE723P timer to your Wi-Fi network. This typically involves:

- Placing the timer in pairing mode (often by pressing and holding the MODE button or a combination of buttons).
- Selecting your Wi-Fi network and entering the password within the app.

- The NETWORK LED on the timer will indicate connection status (e.g., blinking during pairing, solid green when connected).

The PE723P supports long-range Wi-Fi connectivity up to 180 ft (line of sight).

7. OPERATION

7.1 Programming Schedules

All scheduling and programming are managed through the Intermatic Connect mobile app. The app allows you to:

- Set up to 96 ON/OFF events daily for each of the two circuits.
- Create custom 7-day schedules.
- Adjust schedules remotely from anywhere with an internet connection.

7.2 Manual Control

The PE723P offers manual control options directly on the unit:

- **MODE Button:** Press the MODE button to cycle through operating modes: SERVICE, MANUAL, and AUTO.
- **Circuit Buttons (1 and 2):** In MANUAL mode, press the corresponding circuit button to toggle the connected equipment ON or OFF.

7.3 LED Indicators

The LEDs on the control panel provide status information:

- **SERVICE:** Indicates service mode.
- **MANUAL:** Indicates manual operation mode.
- **AUTO:** Indicates automatic schedule operation mode.
- **NETWORK:** Indicates Wi-Fi connection status (e.g., solid for connected, blinking for pairing/disconnected).

8. MAINTENANCE

The Intermatic PE723P is designed for minimal maintenance. Regular checks can help ensure optimal performance:

- **Periodic Inspection:** Annually inspect the enclosure for any signs of damage or wear.
- **Cleanliness:** Keep the exterior of the enclosure clean and free of debris. Use a soft, damp cloth for cleaning; do not use abrasive cleaners or solvents.
- **Terminal Connections:** Periodically check electrical terminal connections to ensure they remain tight.
Always disconnect power before inspecting internal components.

9. TROUBLESHOOTING

Problem	Possible Cause	Solution
---------	----------------	----------

Problem	Possible Cause	Solution
Timer does not power on.	No power supply; tripped breaker; loose wiring.	Check circuit breaker. Verify power connections. Consult a qualified electrician.
Equipment does not turn ON/OFF as scheduled.	Incorrect programming; timer in MANUAL or SERVICE mode; Wi-Fi disconnected.	Verify schedules in the app. Ensure timer is in AUTO mode. Check Wi-Fi connection.
NETWORK LED is blinking or OFF.	No Wi-Fi connection; incorrect Wi-Fi credentials; router issue.	Re-attempt Wi-Fi pairing via the app. Check router status and signal strength. Ensure correct Wi-Fi password.
Cannot control via app.	No internet connection on phone or timer; app issue.	Check phone's internet connection. Verify timer's NETWORK LED is solid. Restart app or phone.
Timer loses settings after power outage.	This should not occur. The PE723P has non-volatile memory.	If settings are lost, contact Intermatic customer support.

For further assistance, refer to the Intermatic Connect app's help section or contact customer support.

10. SPECIFICATIONS

Attribute	Value
Model Number	PE723P
Brand	Intermatic
Voltage	120-277 VAC, 50/60 Hz (Auto-Voltage)
Load Capacity	30A per circuit
Number of Circuits	2
Enclosure Type	Type 3R Outdoor Plastic
Operating Temperature	-40°F to 158°F (-40°C to 70°C)
Product Dimensions	11"D x 14"W x 10.75"H
Item Weight	4.59 pounds
Material	Plastic
Color	Gray
Connectivity	Wi-Fi, Voice Control (Alexa)




11. WARRANTY AND CUSTOMER SUPPORT

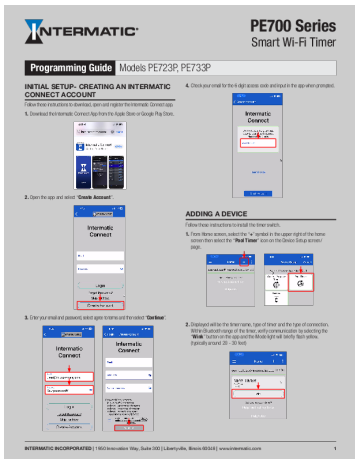
For warranty information, please refer to the documentation included with your product or visit the official Intermatic website. If you encounter any issues or require technical assistance, please contact Intermatic customer support:

- **Intermatic Website:** www.intermatic.com
- **Customer Service:** Refer to the website for current contact information (phone, email, or online support portal).

© 2025 Intermatic. All rights reserved.

Related Documents - PE723P

	<p>Intermatic ET8215C Electronic Timer Control - Technical Data</p> <p>Detailed technical specifications for the Intermatic ET8215C Electronic Timer Control, an astronomic 7-day, 2-circuit electronic control suitable for 120-277 VAC applications in an indoor metal enclosure.</p>
	<p>Intermatic GMXFM1 Electronic Time Switch Instruction Manual</p> <p>Instruction manual for the Intermatic GMXFM1 electronic time switch, covering safety precautions, symbols, initial setup, programming, time settings, daylight saving adjustments, operating modes, and warranty information.</p>
	<p>Intermatic Ascend Timer Installation & Operation Manual (STW700W/ST700W)</p> <p>Comprehensive installation and operation guide for Intermatic Ascend™ 7-Day timers, including models STW700W (Wi-Fi enabled) and ST700W (Standard). Covers setup, wiring, modes, scheduling, settings, troubleshooting, and warranty information.</p>



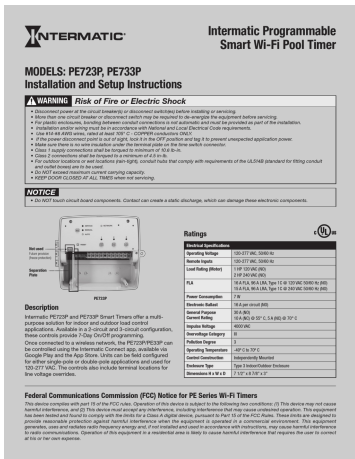
[pdf] Installation Guide Instructions Guide

Intermatic PE700 Series Electronic WiFi Time Control 2 Circuit 120 277 VAC 50 60 Hz PE723P Pool

Supply Unlimited 189712 20241319228 poolsupplyunlimited Products Manuals |||

PE700 Series Smart Wi-Fi Timer Programming Guide Models **PE723P**, PE733P

INITIAL SETUP- CREATING AN INTERMATIC CONNECT ACCOUNT Follow these instructions to download, open and register the Intermatic Connect app. 1. Download the Intermatic Connect App from the Apple Store or Google Play Store. 4. Ch... lang:en score:42 filesize: 2.26 M page_count: 7 document date: 2023-11-14



[pdf] Instructions

Intermatic PE700 Series Electronic WiFi Time Control 2 Circuit 120 277 VAC 50 60 Hz PE723P Pool

Supply Unlimited 189712 20241319205 poolsupplyunlimited Products Manuals |||

Intermatic Programmable Smart Wi-Fi Pool Timer MODELS: **PE723P**, PE733P

Installation and Setup Instructions WARNING Risk of Fire or Electric Shock

Disconnect power at the circuit breaker s or disconnect switch es before installing or servicing. More than one circuit breaker or disconnect switch ma...

lang:en score:42 filesize: 1.14 M page_count: 12 document date: 2023-04-26



[pdf] Warranty

Page Title Intermatic PE700 Series Electronic WiFi Time Control 2 Circuit 120 277 VAC 50 60 Hz PE723P Pool Supply Unlimited 189712 20241319214 poolsupplyunlimited Products Manuals |||

Electronic Timer Control - **PE723P** Electronic Timer Control - 24-Hour 7-Day Electronic WiFi Time Control, 2-Circuit, Type 3R Plastic Enclosure Item **PE723P** TECHNICAL DATA General Model Number Description UPC Code Brand Country of Origin Intermatic Warranty Period PRODUCT DESCRIPTION This general ...

lang:en score:41 filesize: 159.73 K page_count: 2 document date: 2023-11-15

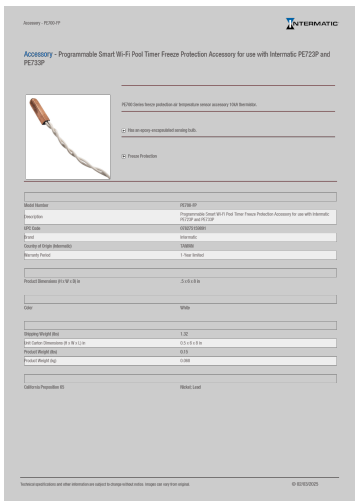


[pdf]

Intermatic PE700 Series Electronic WiFi Time Control 2 Circuit 120 277 VAC 50 60 Hz PE723P Pool Supply Unlimited 189712 20241319233 poolsupplyunlimited Products Manuals |||

PE700 Series Wireless Electronic Time Switch with 24 Hour 7-Day ON/OFF Scheduling scend TM Simplif ... applications with an additional SPDT available; device includes up to 3 line-voltage remote inputs **PE723P** 2-Circuit, PE733P 3-Circuit Model Number **PE723P** PE733P Circuits 2 3 Input Voltage 120-277...

lang:en score:41 filesize: 1.95 M page_count: 2 document date: 2023-08-01

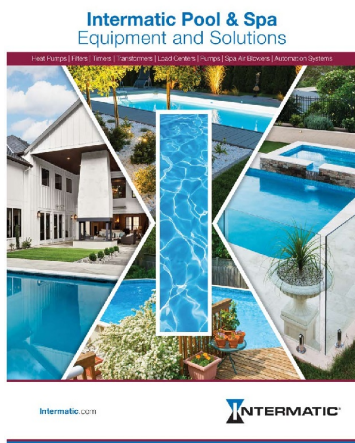


[pdf] Specifications Dimension Guide Warranty Accessories

Page Title 186869 intermaticvendor1 pe700fp technical data en djuly1j3idynn cloudfront net userfiles images inriver original |||

Accessory - PE700-FP Accessory - Programmable Smart Wi-Fi Pool Timer Freeze Protection Accessory for use with Intermatic **PE723P** and PE733P Item PE700-FP PRODUCT DESCRIPTION PE700 Series freeze protection air temperature sensor accessory 10kA thermistor. FEATURES Has an epoxy-encapsulated sensing bu...

lang:en score:21 filesize: 120.36 K page_count: 1 document date: 2025-02-03



[pdf] Specifications Diagram Product Photos Catalog

Untitled intermatic pool catalog 2023 userfiles resources catalogs |||

Inside this Catalog Our product catalog is designed to provide you with all the information you n ... 5 PB Series75 PE24GVA71 PE24VA69 PE10366 PE14071 PE15367 PE153F67 PE153P67 PE153PF67 PE700 Series65 **PE723P**65 PE733P65 PE95379 PE2000068 PE20000 Series68 PE2530068 PE25300F68 PE3000068 PE30000 Series68...

lang:en score:18 filesize: 18.52 M page_count: 84 document date: 2023-10-12



[Intermatic Pool & Spa Equipment and Solutions Catalog](#)

Explore the comprehensive Intermatic catalog for pool and spa equipment and solutions, featuring heat pumps, filters, pumps, automation systems, controls, and more. Find reliable, energy-efficient products for residential and professional use.

lang:en score:18 filesize: 19.43 M page_count: 84 document date: 2024-08-08



[\[pdf\] Diagram Catalog](#)

catalogo de productos piscina y spa 2023 Cloudfront net Necesita una solución para básica con bomba velocidad circulación en un * 7 Bomba alta baja tramo caliente djuly1j3idynn cloudfront userfiles resources catalogs |||

Qu ofrece este catlogo Nuestro catlogo de productos est diseado para brindarle toda la informacin ... 153P67 PE153PF67 PE2000068 PE24GVA71 PE24VA69 PE2530068 PE25300F68 PE3000068 PE30000T368 PE3530068 **PE723P65** PE733P65 PE95379 PF1000M52, 53, 54 PF110072 PF110272 PF1102M72 PF1112T72 PF1202T72 PF1222TB...

lang:es score:11 filesize: 18.13 M page_count: 77 document date: 2024-07-31