



[Manuals.plus](#) /

> [Walfront](#) /

> WALFRONT 12-Key One-Handed RGB Mechanical Gaming Keypad User Manual

Walfront WALFRONTa8kbiehovn

WALFRONT 12-Key One-Handed RGB Mechanical Gaming Keypad User Manual

Model: WALFRONTa8kbiehovn

1. INTRODUCTION

Thank you for choosing the WALFRONT 12-Key One-Handed RGB Mechanical Gaming Keypad. This compact, hot-swappable keypad is designed for enhanced gaming and productivity, offering customizable macros and vibrant RGB lighting. This manual provides detailed instructions for setup, operation, maintenance, and troubleshooting to ensure optimal performance and longevity of your device.



Figure 1: WALFRONT 12-Key One-Handed RGB Mechanical Gaming Keypad

2. PRODUCT OVERVIEW

2.1 Key Features

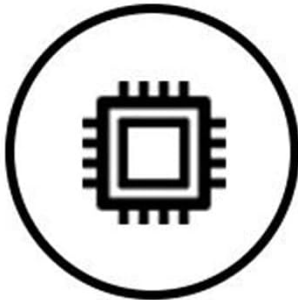
- **ESD Protection Chip:** Equipped with an ESD non-static chip to protect against static electricity, prolonging service life and ensuring data integrity.
- **Injection Keycaps:** Special injection molding process ensures wear resistance and prevents fading or slipping, offering enhanced longevity.
- **Ergonomic Design:** The keypad's layout and upper plug line are designed for comfort and aesthetics, improving the user experience.
- **Hot-Swappable Switches:** Features a hot-swappable axle seat for high compatibility and simple insertion, allowing users to change switches for a customizable tactile feel.
- **Professional Configuration Software:** Dedicated software for full key customization, macro programming, and personalized setups.
- **RGB Lighting:** Adjustable LED lighting effects for a dynamic visual experience.
- **Wide Compatibility:** Supports Windows, macOS, Linux, and mobile phones (requires an OTG converter).



All keys do not occupy



Custom light effect



ESD non static chip



Ergonomic



User defined editing

Figure 2: Key features of the WALFRONT Gaming Keypad

2.2 Package Contents

Please check the package contents upon unboxing:

- 1 x WALFRONT 12-Key Mechanical Gaming Keypad
- 1 x USB Cable

3. SETUP

3.1 Connecting the Keypad

1. Locate the USB-C port on the keypad.
2. Connect one end of the provided USB cable to the keypad's USB-C port.
3. Connect the other end of the USB cable to an available USB port on your computer (Windows, macOS, Linux) or mobile device (requires an OTG converter, not included).
4. The keypad is plug-and-play; no additional drivers are typically required for basic functionality.

Custom key values
Non static chip
Plug and play
Hot plug shaft seat
Support five pin axes



Figure 3: USB-C port for connection

4. OPERATING INSTRUCTIONS

4.1 Customization Software

The WALFRONT 12-Key Keypad features professional configuration software for advanced customization. This software allows you to:

- Remap individual keys to any desired function.
- Create and assign complex macros.
- Adjust RGB lighting effects and colors.
- Save multiple profiles for different applications or games.

Please refer to the manufacturer's website or included documentation for instructions on downloading and installing the specific customization software for your operating system.

Office, industrial control, finance, customer service, games, media
No drive, plug and play, modify at will
Common single key, multi key combination, multimedia control,
mouse simulation
Copy, paste, cut, select all, undo, save, play, pause, volume, switch,
delete, screenshot
Full key customization, any combination of shortcut keys, multi key
integration, can be modified at will

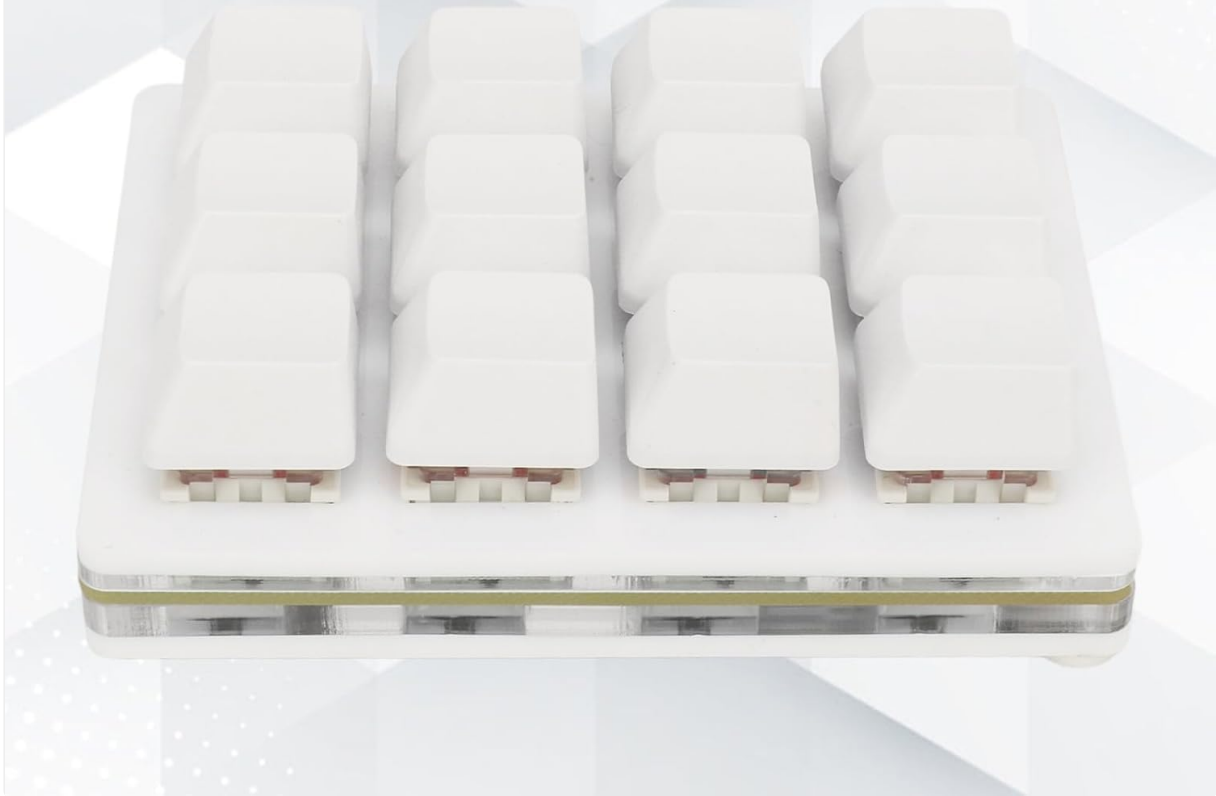


Figure 4: Keypad features including custom key values and hot-swappable design

4.2 Macro Programming and Key Functions

The keypad supports full key customization, allowing any combination of shortcut keys and multi-key integration. Common functions that can be programmed include:

- Copy, Paste, Cut, Select All
- Undo, Save
- Play, Pause, Volume Control
- Switch applications, Delete, Screenshot
- Multimedia control and mouse simulation

These functions can be modified at will through the customization software to suit various uses in office, industrial control, finance, customer service, gaming, and media.

ESD protection chip

Prevent static electricity generation, increase service life. Protect stability of keyboard chip and integrity of transmitted data

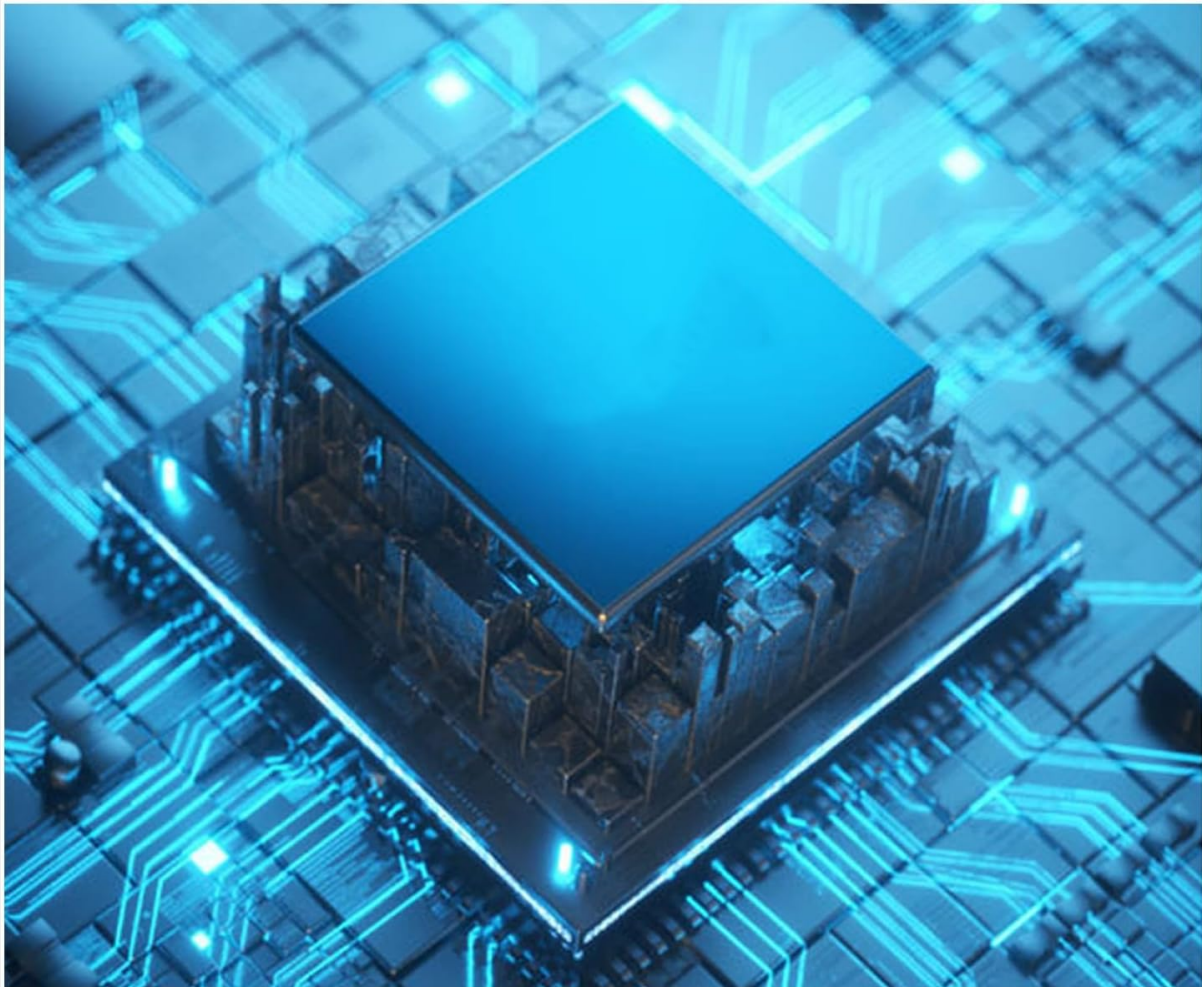
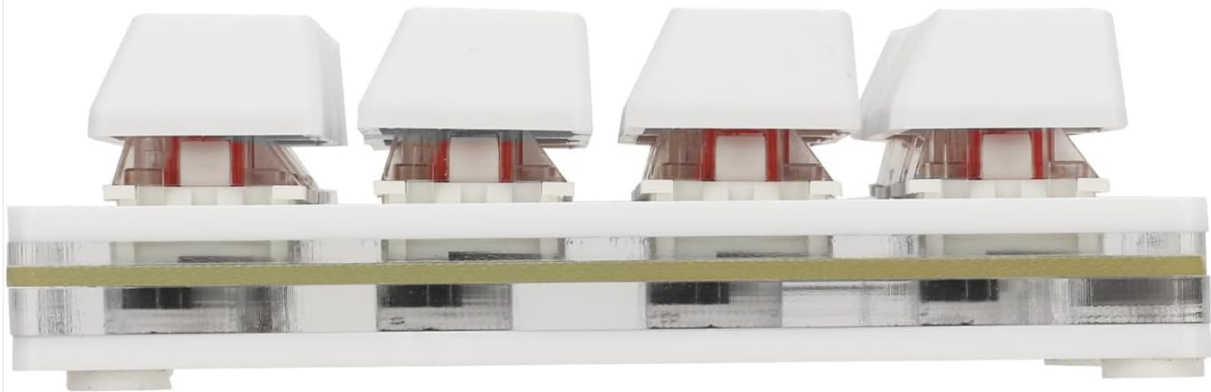


Figure 5: Versatile applications and customization capabilities

4.3 Hot-Swappable Switches

The hot-swappable design allows you to easily change the mechanical switches without soldering. This feature enables you to experiment with different switch types to find your preferred tactile feel and sound. The keypad supports five-pin axes.

Powerful mechanical shaft



Innovative structure,
double noise reduction



Press smooth, touch
bottom smooth



Factory finish



Long spring,
strong rebound

Figure 6: Mechanical switch structure and hot-swappable design

5. MAINTENANCE

5.1 Cleaning

To maintain the keypad's appearance and functionality:

- Disconnect the keypad from your computer before cleaning.
- Use a soft, dry cloth to wipe the surface of the keypad.
- For stubborn dirt, slightly dampen the cloth with water or a mild, non-abrasive cleaner. Avoid excessive moisture.
- Use compressed air to remove dust and debris from between the keycaps.

5.2 Switch Replacement

Thanks to the hot-swappable design, you can replace individual switches if they become faulty or if you wish to change the typing experience. Use a switch puller (often included with replacement switches or sold separately) to gently remove the old switch and press the new one into place, ensuring the pins align correctly.

6. TROUBLESHOOTING

6.1 Common Issues and Solutions

- **Keypad not recognized:** Ensure the USB cable is securely connected to both the keypad and the computer. Try a different USB port or cable. Restart your computer.

- **Keys not responding:** Check if the keycaps are properly seated. If a specific switch is faulty, replace it using the hot-swappable feature.
- **RGB lighting not working:** Verify that the customization software is installed and configured correctly. Check for any software updates.
- **Macros not executing:** Ensure the macros are correctly programmed and saved within the customization software. Check if the correct profile is active.

6.2 ESD Protection

The integrated ESD non-static chip helps prevent static electricity generation, which can damage electronic components. This feature increases the service life of the keypad and protects the stability of the keyboard chip and the integrity of transmitted data.



Figure 7: ESD protection chip for enhanced durability

7. SPECIFICATIONS

Feature	Specification
Manufacturer	WALFRONT
Model Number	WALFRONTa8kbiehovn
Item Weight	6.2 ounces
Package Dimensions	5.91 x 3.94 x 1.18 inches
Color	White
Material	Acrylonitrile Butadiene Styrene
Item Package Quantity	1
Special Features	Ergonomic, Hot-Swappable, Customizable Macros, RGB Lighting, ESD Chip
Included Components	USB Cable
Switch Body	Red switch
Compatible System	Windows, macOS, Linux, Mobile (with OTG)

8. WARRANTY AND SUPPORT

For warranty information and technical support, please refer to the documentation included with your product or visit the official Walfront website. Keep your purchase receipt as proof of purchase for any warranty claims.