

Jocca 2311

JOCCA Glass Blender Model 2311 User Manual

Model: 2311 | Brand: Jocca

1. IMPORTANT SAFETY INSTRUCTIONS

Please read all instructions carefully before using the JOCCA Glass Blender Model 2311. Keep this manual for future reference.

- Always ensure the blender is unplugged before assembling, disassembling, or cleaning.
- Do not immerse the motor base in water or any other liquid. Clean with a damp cloth only.
- Keep hands and utensils out of the container while blending to reduce the risk of severe personal injury.
- Blades are sharp. Handle with extreme care during assembly, disassembly, and cleaning.
- Do not operate the blender with a damaged cord or plug, or after the appliance malfunctions or has been dropped or damaged in any manner.
- This appliance is not intended for use by persons (including children) with reduced physical, sensory or mental capabilities, or lack of experience and knowledge, unless they have been given supervision or instruction concerning use of the appliance by a person responsible for their safety.
- Children should be supervised to ensure that they do not play with the appliance.
- Do not blend hot liquids as this may cause pressure buildup and result in scalding. Allow hot ingredients to cool before blending.
- Ensure the lid is securely in place before operating the blender.
- Do not overfill the carafe or travel bottle beyond the maximum fill line.
- The blender features a stainless steel base with suction cup feet for stability. Ensure it is placed on a stable, flat surface during use.
- This product is BPA-free, ensuring safe and healthy use.

2. PRODUCT COMPONENTS

The JOCCA Glass Blender Model 2311 includes the following components:

- Motor Base (with 350W motor and push-button control)

- 1-Liter Glass Carafe with Lid
- 600ml Portable Travel Bottle with Lid
- Removable Stainless Steel Blade Assembly



Image: The JOCCA Glass Blender showing both the 1-liter glass carafe and the 600ml travel bottle, highlighting their respective

capacities.

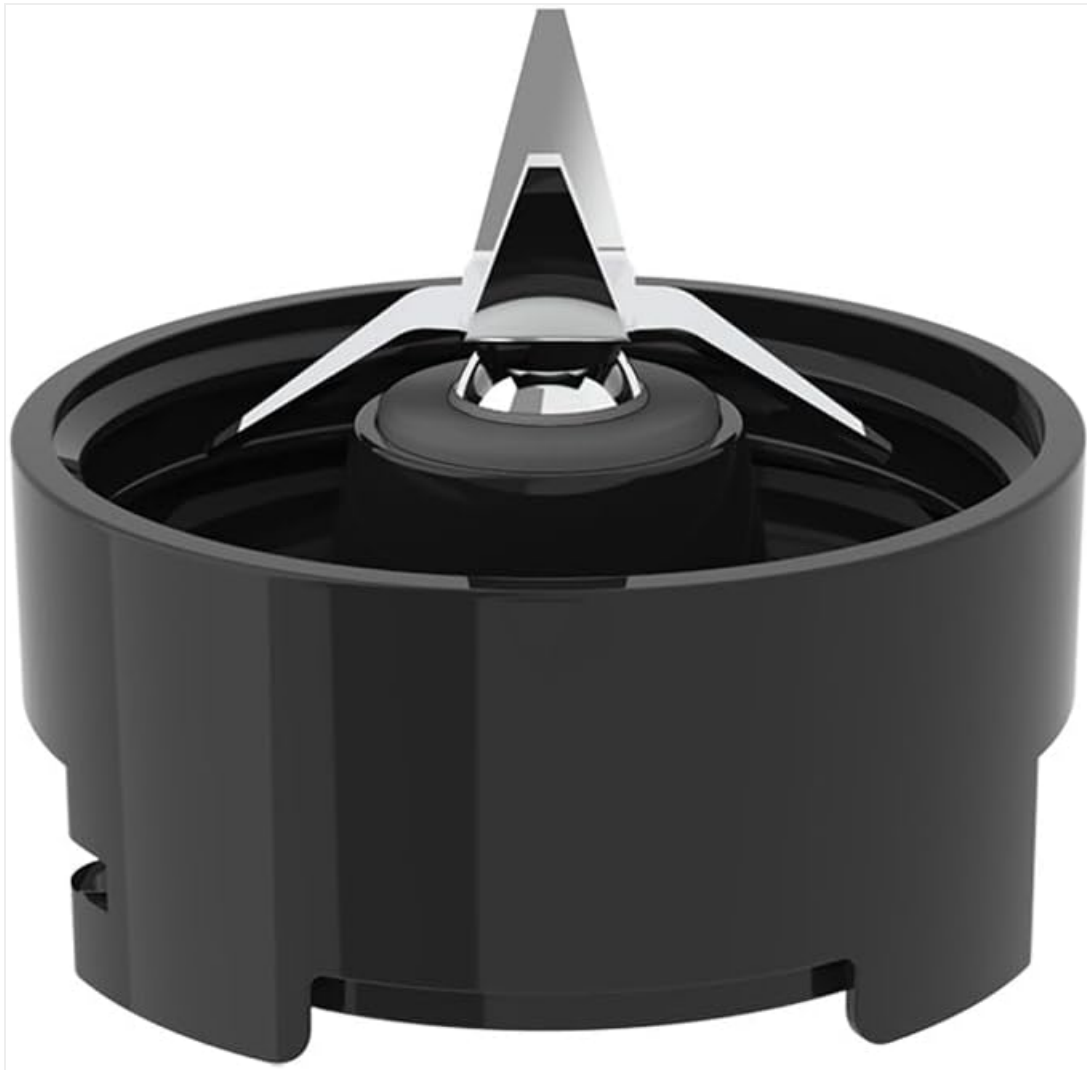


Image: A close-up view of the removable stainless steel blade assembly, designed for efficient blending and easy cleaning.

3. TECHNICAL SPECIFICATIONS

Model Number	2311
Power	350 Watts
Voltage	220 Volts
Carafe Capacity	1 Liter (Glass)
Travel Bottle Capacity	600 ml (BPA-free)
Blade Material	Stainless Steel
Base Material	Stainless Steel
Controls	Push-button
Dimensions (L x W x H)	15.5 x 35 x 22 cm
Weight	2.4 kg

Dishwasher Safe Parts

Yes (Carafe, Travel Bottle, Blade Assembly)



Image: The JOCCA Glass Blender with indicated dimensions of approximately 34 cm in height and 21 cm in width at the base.

4. SETUP AND ASSEMBLY

1. **Unpack Components:** Carefully remove all parts from the packaging. Retain packaging for storage or disposal.
2. **Clean Before First Use:** Wash the glass carafe, travel bottle, and blade assembly in warm, soapy water. Rinse thoroughly and dry. The motor base should only be wiped with a damp cloth.
3. **Assemble Blade:** Place the stainless steel blade assembly onto the bottom of the glass carafe or travel bottle. Ensure it is securely twisted into place to prevent leaks.
4. **Position Carafe/Bottle:** Place the assembled carafe or travel bottle onto the motor base. Align the tabs on the carafe/bottle with the slots on the motor base and twist clockwise until it locks securely into position. The blender will not operate unless correctly assembled.
5. **Connect Power:** Plug the power cord into a standard 220V electrical outlet.

5. OPERATING INSTRUCTIONS

General Blending

1. **Prepare Ingredients:** Cut solid ingredients into small pieces (approximately 2-3 cm) to facilitate blending.
2. **Add Ingredients:** Place ingredients into the glass carafe or travel bottle. For best results, add liquids first, then soft ingredients, followed by harder ingredients and ice. Do not exceed the maximum fill line.
3. **Secure Lid:** Place the lid firmly onto the carafe or travel bottle. Ensure the lid is properly sealed. The wide-opening removable lid allows for easy ingredient addition during blending if needed.
4. **Start Blending:** Press the power button on the motor base to start blending. The blender operates at one speed.
5. **Blend Duration:** Blend for short intervals (e.g., 30-60 seconds) to achieve desired consistency. Avoid continuous operation for more than 1 minute to prevent overheating. If blending for longer, allow the motor to rest for a few minutes between cycles.
6. **Stop Blending:** Release the power button to stop the blender.
7. **Serve:** Carefully remove the carafe or travel bottle from the motor base. For the travel bottle, replace the blade assembly with the drinking lid.

Blending Ice

The JOCCA Glass Blender is equipped with robust stainless steel blades suitable for crushing ice.

- Add a small amount of liquid (water, juice) along with ice cubes to facilitate blending.
- Use short pulses to crush ice effectively.



Image: Ice cubes, illustrating the blender's capability to crush ice for various beverages.

Recipe Ideas

This blender is ideal for preparing a variety of healthy and delicious beverages, including:

- Smoothies (fruit, vegetable, protein)
- Shakes
- Gazpacho and other cold soups
- Crushed ice drinks (granitas)



Smoothie



Gazpacho



Granita

6. CLEANING AND MAINTENANCE

Regular cleaning ensures optimal performance and extends the life of your blender. Always unplug the appliance before cleaning.

Cleaning the Motor Base

- Wipe the motor base with a soft, damp cloth.
- Do not immerse the motor base in water or any other liquid.
- Do not use abrasive cleaners or scouring pads, as they may scratch the surface.

Cleaning the Carafe, Travel Bottle, and Blade Assembly

- The glass carafe, travel bottle, and blade assembly are dishwasher safe.
- Alternatively, wash these parts in warm, soapy water. Use a brush to safely clean around the blades.
- Rinse thoroughly and dry immediately after washing to prevent water spots.
- The removable stainless steel blades facilitate easy cleaning and maintenance.

7. TROUBLESHOOTING

Problem	Possible Cause	Solution
Blender does not start.	Not plugged in; Carafe/bottle not correctly assembled; Overload protection activated.	Ensure power cord is securely plugged in. Twist carafe/bottle clockwise until it locks into the motor base. Unplug, remove some ingredients, wait 15 minutes, then try again.
Ingredients are not blending smoothly.	Too little liquid; Too many solid ingredients; Ingredients are too large.	Add more liquid. Reduce the amount of solid ingredients. Cut ingredients into smaller pieces. Use pulse function for tougher ingredients.
Leakage from the bottom of the carafe/bottle.	Blade assembly not securely tightened; Seal ring is damaged or missing.	Ensure the blade assembly is tightly twisted onto the carafe/bottle. Check the seal ring for proper placement and condition. Replace if damaged.
Motor smells or overheats.	Continuous operation for too long; Overloaded with ingredients.	Stop blending immediately. Unplug the blender and allow it to cool down for at least 30 minutes. Reduce the amount of ingredients and blend in shorter intervals.

8. WARRANTY AND SUPPORT

Warranty Information

The JOCCA Glass Blender Model 2311 comes with a **three-year limited warranty** from the date of purchase. This warranty covers manufacturing defects under normal household use. It does not cover damage resulting from misuse, accident, alteration, neglect, commercial use, or unauthorized repair.

Please retain your proof of purchase for warranty claims.

Customer Support

For technical assistance, warranty claims, or general inquiries, please contact Jocca customer support. Refer to the contact information provided with your product packaging or visit the official Jocca website.

You can find more information at www.jocca.es.

For product identification, the International Article Number (EAN/UPC) is **8435253580801**.