



Manuals.plus /

› HJT /

› HJT 5MP POE Explosion Proof Camera User Manual (Model HJT-EP5MP-W)

## HJT HJT-EP5MP-W

# HJT 5MP POE Explosion Proof Camera User Manual

Model: HJT-EP5MP-W

Brand: HJT

## 1. INTRODUCTION

---

This manual provides essential information for the safe and effective installation, operation, and maintenance of your HJT 5MP POE Explosion Proof Camera (Model HJT-EP5MP-W). Please read this manual thoroughly before using the product and retain it for future reference. This camera is designed for robust surveillance in challenging environments, featuring explosion-proof and waterproof capabilities.

### Safety Information

- Ensure all electrical connections comply with local codes and regulations.
- Only use Power over Ethernet (POE) compliant equipment for power supply.
- Do not attempt to open or modify the camera housing, as this will void the warranty and compromise its explosion-proof and waterproof ratings.
- Installation should be performed by qualified personnel, especially in hazardous environments.
- Disconnect power before performing any maintenance or installation procedures.

## 2. WHAT'S IN THE BOX

---

Carefully unpack the box and ensure all items are present and in good condition. If any items are missing or damaged, contact your supplier immediately.

- HJT 5MP POE Explosion Proof Camera (Model HJT-EP5MP-W)
- Waterproof lid
- User's manual (this document)

### 3. PRODUCT OVERVIEW

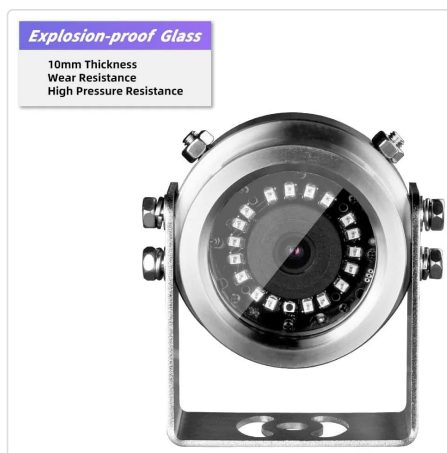
---

The HJT-EP5MP-W is a high-performance 5-megapixel surveillance camera built with a durable 304 stainless steel housing, designed for extreme conditions. It features advanced imaging and compression technologies for reliable security monitoring.

#### Key Features

- **5MP Ultra HD Resolution:** Provides clear and detailed video footage.
- **POE Connectivity:** Simplifies installation by providing power and data over a single Ethernet cable.
- **Explosion-Proof (CT6) & IP66 Waterproof:** Ensures reliable operation in hazardous and harsh outdoor environments.
- **304 Stainless Steel Construction:** Offers high temperature and corrosion resistance.
- **98ft (30m) IR Night Vision:** Equipped with 18PCS Array Lights for clear visibility in low-light conditions.
- **85° Viewing Angle with 3.6mm Lens:** Captures a wide area of surveillance.
- **Dual H.265/H.264 Compression:** Efficiently stores more video data with reduced file sizes.
- **Real-time Alerts & Motion Detection:** Notifies you of suspicious activity.
- **ONVIF Protocol Support:** Ensures compatibility with various network video recorders (NVRs) and surveillance systems.

#### Camera Components



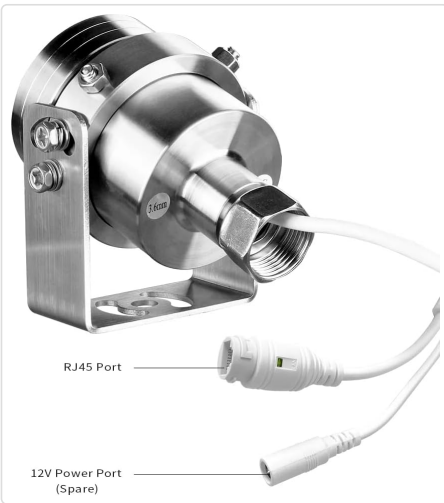
Front view of the HJT 5MP POE Explosion Proof Camera, showing the lens and IR array lights.

**340 Stainless Steel**

High Temperature Resistance  
Corrosion Resistance  
Suitable for Harsh Environments



Side view of the camera, highlighting its robust stainless steel construction.



Rear view showing the RJ45 POE port and the optional 12V power port.

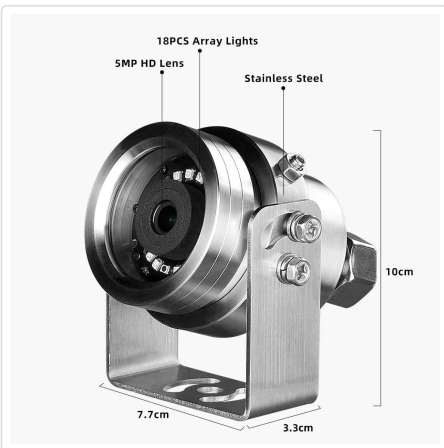
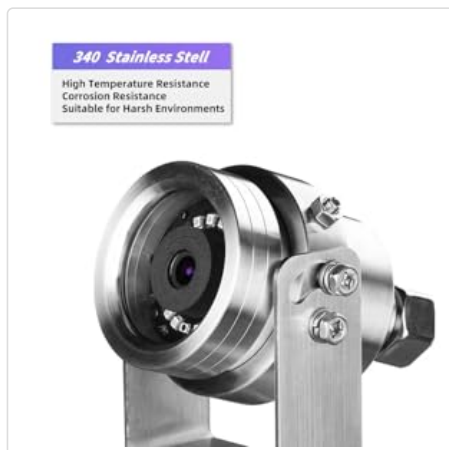


Diagram illustrating the physical dimensions of the camera.



Close-up of the 10mm thick explosion-proof glass, designed for wear and high-pressure resistance.



Detail of the 304 stainless steel housing, emphasizing its resistance to high temperatures and corrosion.

## 4. SETUP

---

### 4.1 Physical Installation

1. **Choose a Mounting Location:** Select a suitable wall or surface that provides the desired viewing angle and is structurally sound. Consider the 85-degree viewing angle for optimal coverage.
2. **Mount the Camera:** Use appropriate screws and anchors to securely attach the camera's wall mount bracket. The camera is designed for wall mount installation.
3. **Connect the Ethernet Cable:** Connect a standard Ethernet cable from your POE switch or NVR to the camera's RJ45 port. Ensure the waterproof lid is properly installed over the connection to maintain IP66 rating.
4. **(Optional) 12V Power Connection:** If not using POE, connect a 12V DC power adapter (not included) to the 12V power port.

### 4.2 Network Configuration

The camera typically comes with a default static IP address (e.g., 192.168.0.123). To access and configure the camera, you may need to adjust your computer's network settings temporarily.

1. **Direct Connection (for initial setup):** Connect your PC and the camera to the same POE switch. Disconnect the uplink from the switch to isolate the network segment.

2. **Assign Static IP to PC:** Set your PC's IP address to be in the same subnet as the camera (e.g., 192.168.0.2). The gateway can be set to 192.168.0.1.
3. **Access Camera via Web Browser:** Open a web browser and enter the camera's default IP address (e.g., http://192.168.0.123).
4. **Login:** Enter the default username and password (refer to the camera's packaging or a separate quick start guide for default credentials).
5. **Configure Network Settings:** In the camera's web interface, navigate to network settings. Change the IP address to one compatible with your existing network or enable DHCP if your network supports it.
6. **Integrate with NVR/Software:** Add the camera to your NVR or surveillance software using its IP address and ONVIF protocol.

## 4.3 Software Installation

The camera supports various platforms for monitoring and control.

- **Mobile App:** Download the recommended mobile application (e.g., 'CamHi' or similar, as indicated in the camera's interface or packaging) from the App Store (iOS) or Google Play Store (Android).
- **PC Software:** Download the compatible client software for Windows or Mac OS from the manufacturer's website or provided media.

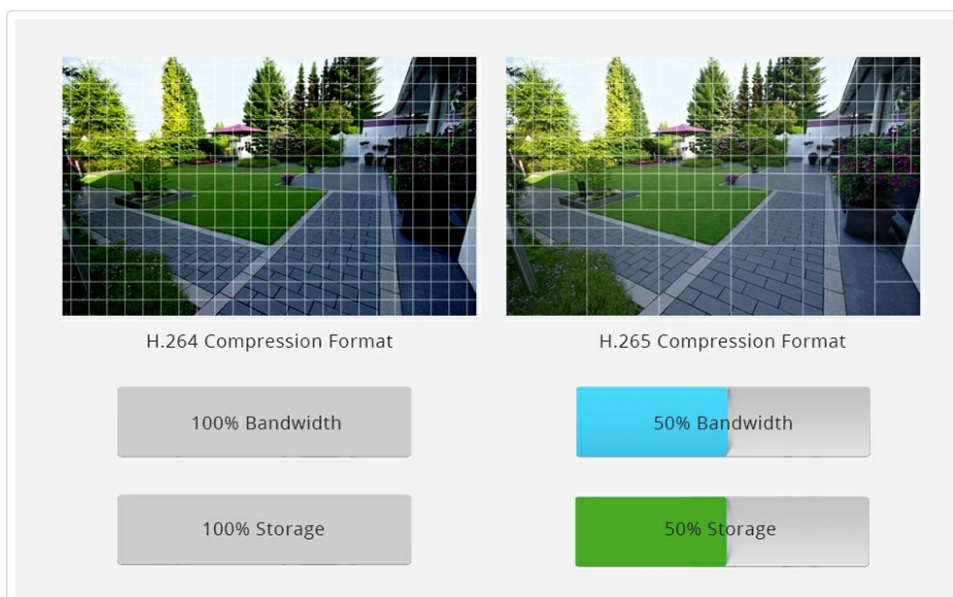


Illustration of remote access options via mobile app and desktop software.

## 5. OPERATION

### 5.1 Live View and Recording

- Access the live video feed through the mobile app, PC software, or NVR interface.
- Configure recording schedules and methods (continuous, motion-triggered) via the software. The camera supports H.265/H.264 compression for efficient storage.



Comparison showing the efficiency of H.265 compression in reducing bandwidth and storage requirements.

## 5.2 Night Vision

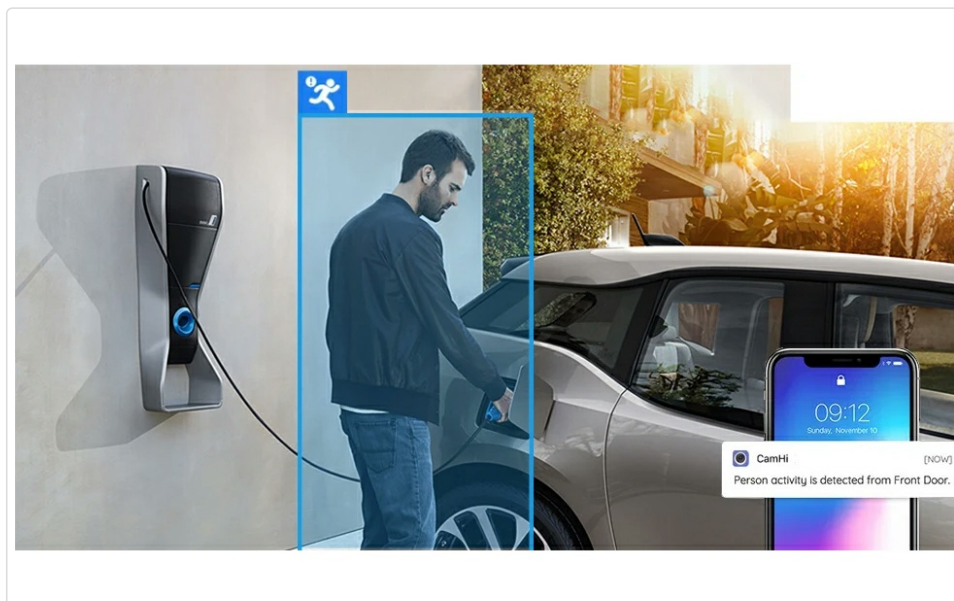
The camera automatically switches to infrared night vision in low-light conditions, providing clear black and white images up to 98 feet (30 meters).



Visual comparison of camera performance during daytime and nighttime conditions.

## 5.3 Motion Detection and Alerts

- Enable and configure motion detection zones and sensitivity settings in the camera's software.
- Set up real-time alerts, such as push notifications to your mobile device or email alarms, when motion is detected.



Example of a motion detection alert triggered by human activity, with a notification on a smartphone.

## 6. MAINTENANCE

### 6.1 Cleaning

- Regularly clean the camera lens and housing with a soft, damp cloth. Do not use harsh chemicals or abrasive cleaners.
- Ensure the explosion-proof glass remains clear for optimal image quality.

### 6.2 Firmware Updates

Periodically check the manufacturer's website for firmware updates. Keeping your camera's firmware up-to-date ensures optimal performance, security, and access to new features.

### 6.3 Environmental Considerations

The camera's 304 stainless steel construction and IP66 rating provide excellent resistance to harsh environments, including high temperatures, corrosion, and water ingress. Ensure all connections are sealed properly to maintain the IP66 rating.



Examples of suitable installation environments, including mines, oil fields, gas stations, chemical plants, and warehouses.

## 7. TROUBLESHOOTING

---

- **No Power/No Image:**

- Verify the POE switch or injector is functioning correctly and providing power.
- Check the Ethernet cable connection.
- If using a 12V adapter, ensure it is connected and providing power.

- **Cannot Access Camera on Network:**

- Confirm the camera's IP address is correct and within your network's subnet.
- If the camera has a static IP (e.g., 192.168.0.123), ensure your PC is configured to access that subnet during initial setup.
- Check for network cable integrity and switch port status.
- Disable any firewalls on your PC that might be blocking access.

- **Poor Image Quality:**

- Clean the camera lens.
- Ensure sufficient lighting for optimal performance, especially for night vision.
- Check network bandwidth if experiencing lag or pixelation.

- **Motion Detection Not Triggering:**

- Adjust motion detection sensitivity and detection zones in the software.
- Ensure the camera's time and date are correctly synchronized.

## 8. SPECIFICATIONS

---

Feature	Specification
Model Name	HJT-EP5MP-W
Video Capture Resolution	5MP
Connectivity Technology	POE (Power Over Ethernet)
Explosion Proof Level	CT6
Waterproof Level	IP66
Housing Material	304 Stainless Steel
Lens	3.6mm
Viewing Angle	85 Degrees
IR Night Vision Range	98 Feet (30m) with 18PCS Array Lights
Video Compression	H.265/H.264
Connectivity Protocol	ONVIF
Control Method	App, Desktop Software
Compatible Devices	Desktop, Digital Video Recorder, Laptop, Smartphone
Power Source	Corded Electric (POE or 48V/12V DC)
Mounting Type	Wall Mount
Item Dimensions (L x W x H)	3 x 2 x 4 inches
Item Weight	3.2 pounds
UPC	755452089195

## 9. WARRANTY AND SUPPORT

### 9.1 Warranty Information

HJT products are covered by a limited warranty against defects in materials and workmanship. Please refer to the warranty card included with your product or visit the official HJT website for detailed warranty terms and conditions. Keep your purchase receipt as proof of purchase.

### 9.2 Technical Support

For technical assistance, troubleshooting, or product inquiries, please contact HJT customer support through the following channels:

- **Website:** Visit the official HJT website for FAQs, support resources, and contact forms.
- **Email:** Refer to your product packaging or the HJT website for customer service email addresses.

