

[Manuals.plus](#) /

> [podofo](#) /

> [podofo 8-Core Android 13 Car Radio User Manual for Nissan Altima 2008-2012 \(Manual A/C\)](#)

podof 8 CORE 4G+64G Car Radio

podof 8-Core Android 13 Car Radio User Manual

For Nissan Altima 2008-2012 with Manual A/C

1. INTRODUCTION

This manual provides detailed instructions for the installation, operation, and maintenance of your new podof 8-Core Android 13 Car Radio. This unit is specifically designed for Nissan Altima models manufactured between 2008 and 2012, equipped with manual air conditioning systems. Please read this manual thoroughly before installation and use to ensure proper functionality and safety.

2. COMPATIBILITY

This car stereo head unit is compatible with Nissan Altima vehicles from model years 2008, 2009, 2010, 2011, and 2012 that feature a manual A/C system. It is crucial to verify your vehicle's A/C type before installation. The unit comes with a plug-and-play wiring harness designed for easy integration.



Image 2.1: Dashboard comparison showing the podof car radio installed in a Nissan Altima with manual A/C (left) versus the original dashboard (right). Note the distinction between manual and auto A/C controls.

3. SETUP AND INSTALLATION

3.1 Package Contents

Before beginning installation, please ensure all components are present:

- podofu 8-Core Android 13 Car Radio Unit
- Power Cable
- RCA Input/Output Cables
- Reversing Camera Input Cable
- USB Cable
- GPS Antenna
- HD Backup Camera
- Installation Tools
- User Manual
- Microphone (MIC)

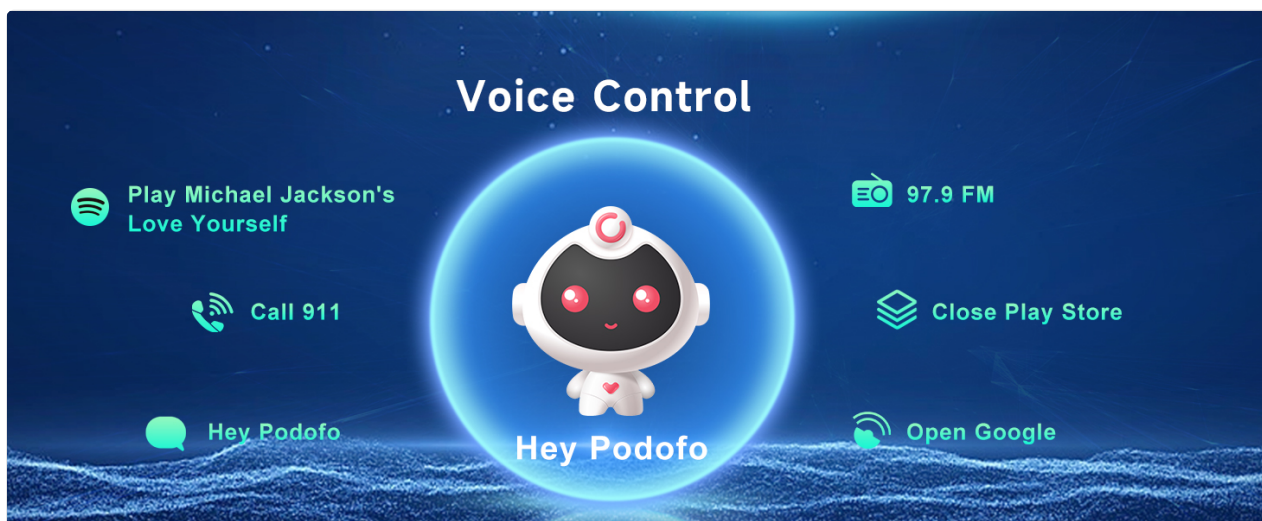


Image 3.1: Overview of the package contents, including the main unit dimensions, power cable, camera cable, RCA cables, USB cable, GPS antenna, user manual, microphone, and HD backup camera.

3.2 General Installation Notes

1. Ensure the vehicle's battery is disconnected before starting installation.
2. Carefully remove the original car stereo and trim panels according to your vehicle's service manual.
3. Connect the provided wiring harness to the car radio and the vehicle's existing wiring.
4. Route all cables neatly to avoid interference and damage.
5. Test all functions before fully reassembling the dashboard.

3.3 HD Backup Camera Installation

The included HD night vision rearview camera provides a 170-degree ultra-wide viewing angle and is fully waterproof. Follow these steps for installation:

1. Mount the backup camera securely at the rear of your vehicle, typically near the license plate light.

2. Route the camera's video cable to the car radio unit.
3. Connect the camera's power cable to the vehicle's reversing light power source (positive and negative).
4. Connect the trigger wire from the camera cable to the reversing camera input on the car radio unit.

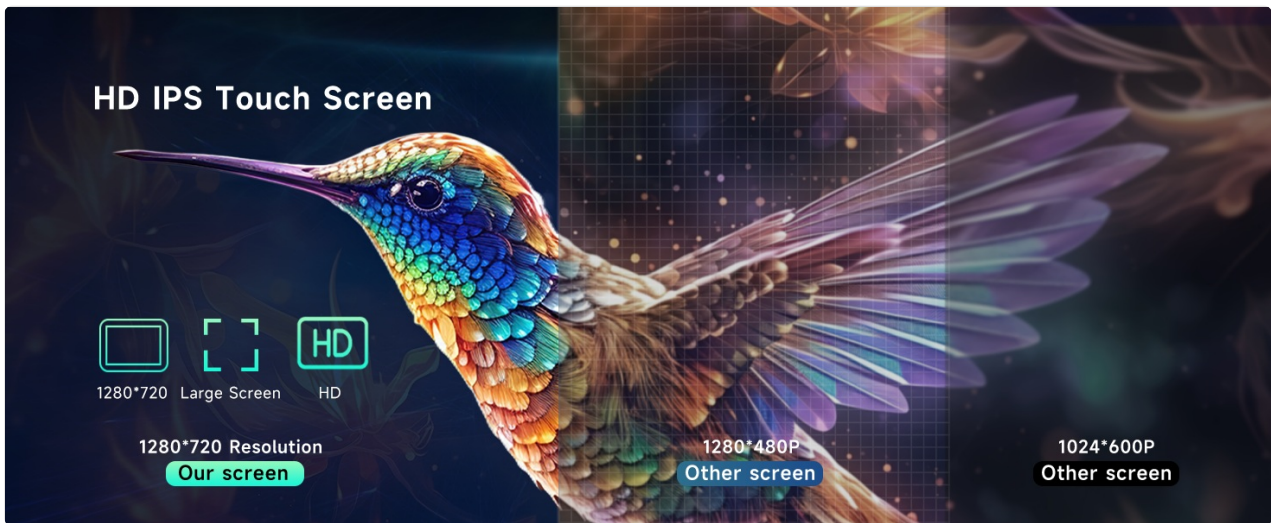


Image 3.2: Wiring diagram for the HD backup camera, showing connections to the car radio and vehicle's reversing light.

3.4 Steering Wheel Control (SWC) Connection

Connect the SWC wires from the vehicle to the corresponding inputs on the car radio harness. Once connected, you can configure the steering wheel buttons through the unit's settings menu to control functions like volume, track skipping, and call answering.



Image 3.3: Steering wheel control setup interface and example of use.

4. OPERATING INSTRUCTIONS


4.1 Basic Operation and User Interface


The unit runs on the Android 13 operating system, powered by an 8-Core CPU, 4GB RAM, and 64GB ROM for smooth performance. The 9-inch IPS touch screen features a 1280*720 resolution. You can customize the interface with multiple wallpaper and UI theme options. The split-screen function allows you to run two

applications simultaneously.

IPS HD Screen




IPS 178°


1280*720


2.5D Screen


Touchscreen

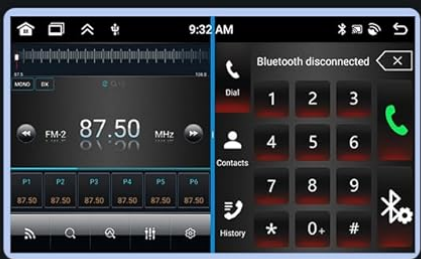

Split Screen

Image 4.1: IPS HD screen features, highlighting resolution, viewing angle, and split-screen capability.

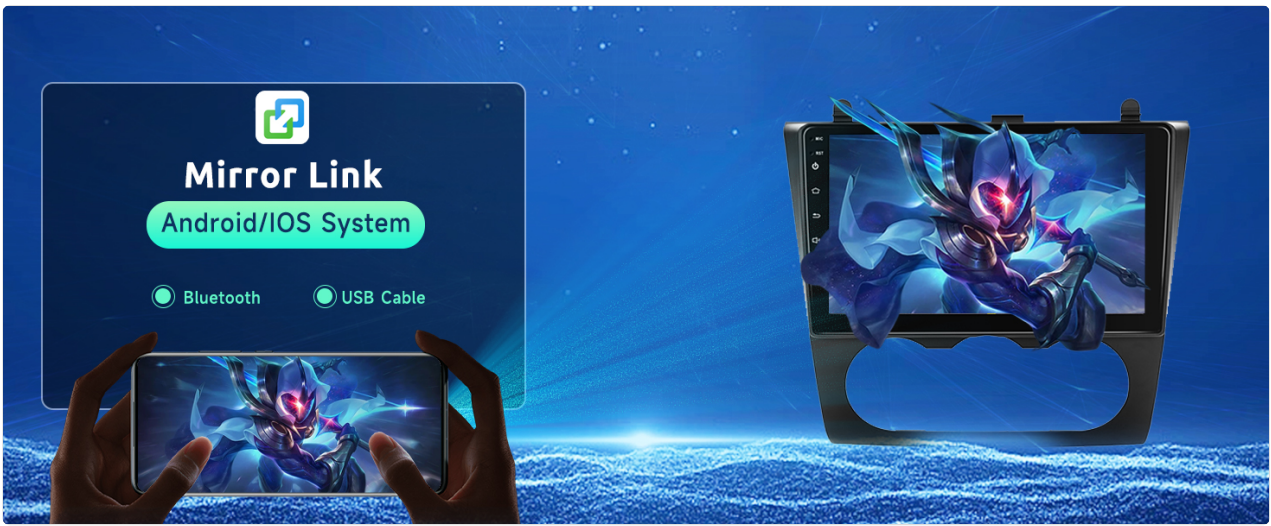


Image 4.2: Example of multiple UI themes for interface customization.



Image 4.3: Screen partitioning in action, displaying navigation and media playback side-by-side.

4.2 Wireless CarPlay and Android Auto

The car radio supports both wired and wireless CarPlay and Android Auto. This feature allows seamless integration with your smartphone, providing access to navigation, music, calls, and voice control directly from the car's display. This enhances driving safety by minimizing phone interaction.

- **Wireless Connection:** Enable Bluetooth and Wi-Fi on your smartphone and connect to the car radio. Follow the on-screen prompts to initiate CarPlay or Android Auto.
- **Wired Connection:** Connect your smartphone to the car radio via a USB cable. The system will automatically detect and launch CarPlay or Android Auto.

Carplay / Android Auto / Mirror Link

Android System	IOS System	Android/IOS System
		
		
<input type="radio"/> Bluetooth <input type="radio"/> USB Cable	<input type="radio"/> Bluetooth <input type="radio"/> USB Cable	<input type="radio"/> Bluetooth <input type="radio"/> USB Cable
Carplay	Android Auto	Mirror Link
		
CPLink	AndroidAuto	CarbitLink



Image 4.4: Overview of CarPlay, Android Auto, and Mirror Link features and their connection options (Bluetooth, USB).



Image 4.5: Visual representation of wired and wireless CarPlay and Android Auto interfaces on the car radio.

4.3 Bluetooth 5.0 and DSP Audio

The unit features Bluetooth 5.0 for stable, fast, and smooth connections, enabling clear hands-free calling and wireless audio streaming. Digital Sound Processing (DSP) technology provides a realistic and immersive music experience, allowing precise sound adjustments, noise suppression, and improved clarity.

- **Bluetooth Pairing:** Go to the Bluetooth settings on the car radio, enable Bluetooth on your phone, and select the car radio from the list of available devices to pair.
- **DSP Adjustment:** Access the audio settings menu to fine-tune the equalizer (32EQ adjustment), balance, fader, and other sound parameters to your preference.

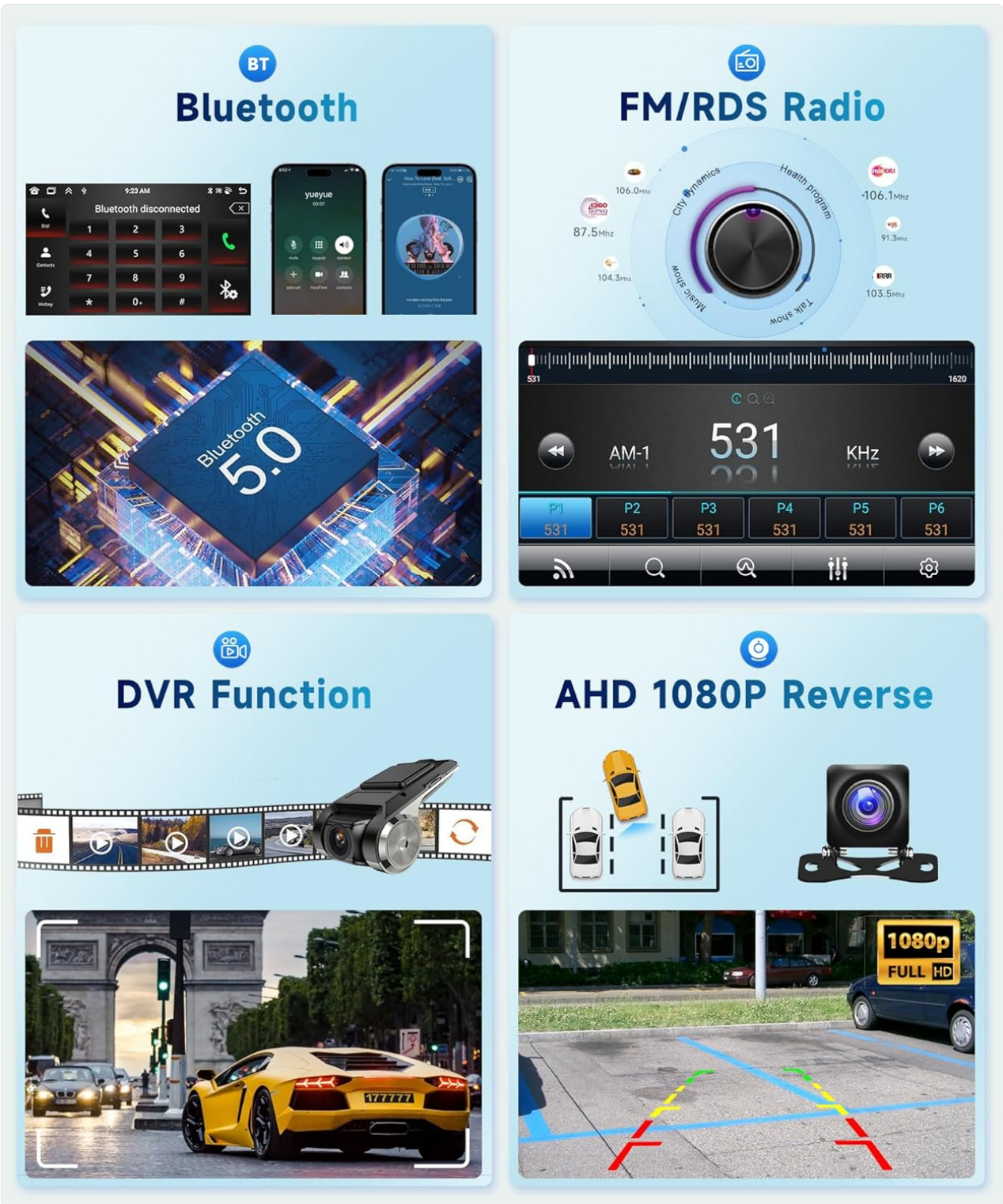


Image 4.6: Bluetooth 5.0 interface for hands-free calling and music streaming, alongside FM/RDS radio controls.



Image 4.7: DSP 32EQ adjustment interface for customized audio settings.

4.4 GPS Navigation and WiFi Connectivity

The car radio includes built-in GPS for offline navigation, ensuring reliable map data even without network coverage. When connected to Wi-Fi, you can use online maps, download additional applications from the app store, and access internet-based services directly on the touch screen.

- **Offline Navigation:** Pre-loaded maps allow navigation without an internet connection.
- **WiFi Connection:** Connect to a mobile hotspot or local Wi-Fi network via the settings menu to enable online features.



GPS Navigation



Google Maps



MAPS.ME



Waze



Offline



Online



Wifi Connction

Support appstore to download more apps to enrich car life



Image 4.8: GPS navigation interface with online and offline map capabilities, and WiFi connection for app access.



Image 4.9: GPS navigation and WiFi connection features for enhanced functionality.

4.5 Voice Control

The system supports voice commands, allowing you to control various functions hands-free. This includes playing music, making calls, navigating, and opening applications. Simply activate the voice assistant (Siri or Google Assistant) and speak your commands.

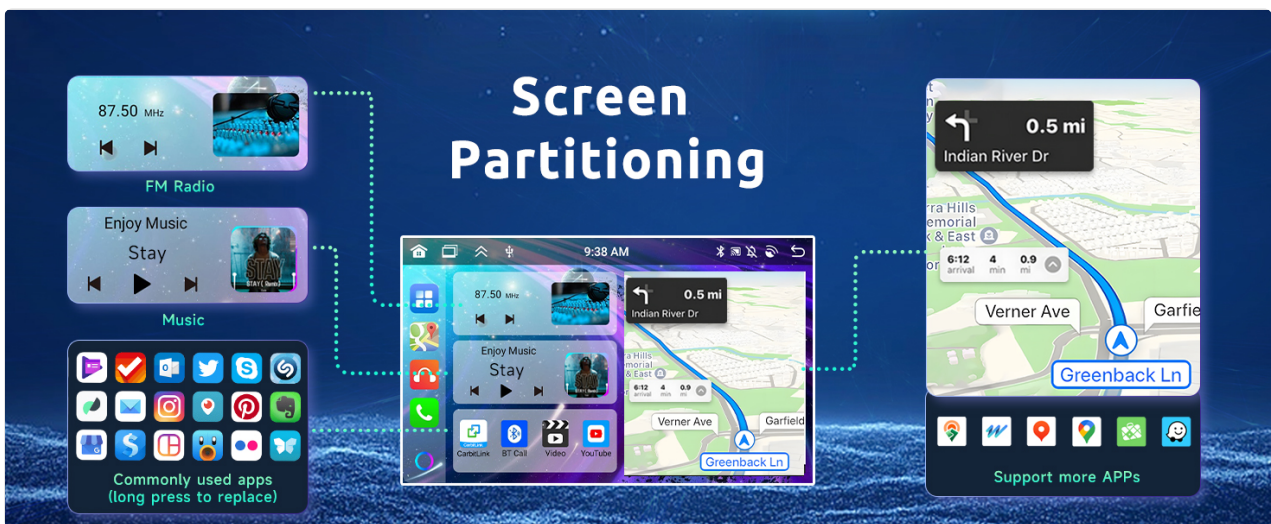


Image 4.10: Examples of voice commands for Siri Assistant and Google Assistant.

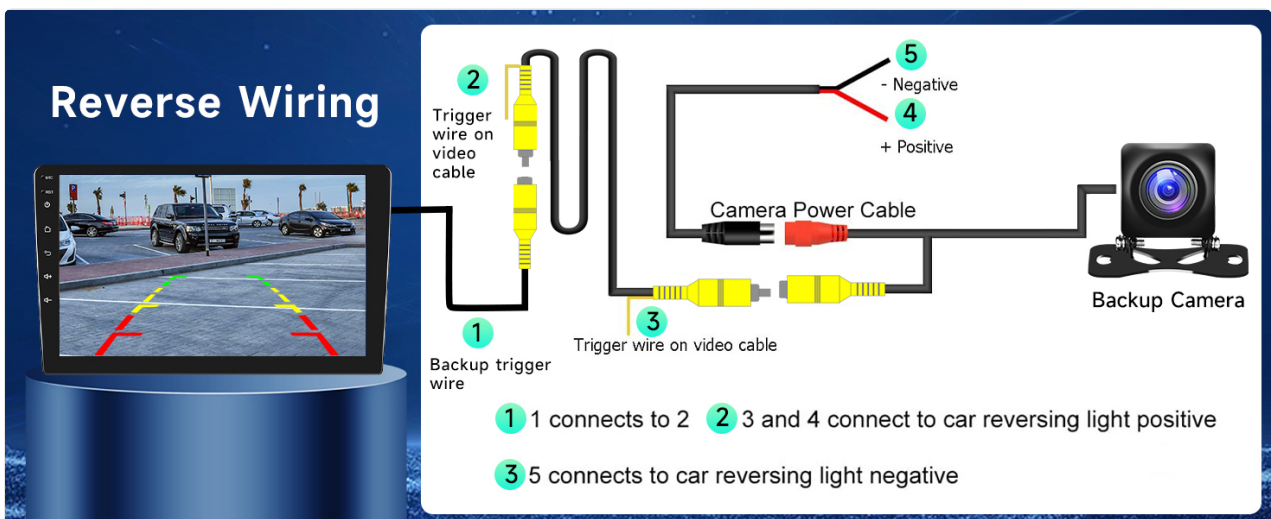


Image 4.11: Voice control interface with example commands.

4.6 Mirror Link

The Mirror Link function allows you to mirror your smartphone's screen (Android/iOS) onto the car radio display. This can be achieved via Bluetooth or USB cable, providing a larger view of your phone's content.



Image 4.12: Mirror Link functionality for Android and iOS devices.

5. MAINTENANCE

The podofu car radio is designed for durability and requires minimal maintenance. To ensure optimal performance and longevity:

- **Cleaning:** Use a soft, dry cloth to clean the screen and exterior surfaces. Avoid abrasive cleaners or solvents that may damage the finish.
- **Software Updates:** Periodically check for available software updates through the unit's settings menu or the manufacturer's website to ensure you have the latest features and bug fixes.
- **Environmental Conditions:** Avoid exposing the unit to extreme temperatures, direct sunlight for prolonged periods, or excessive moisture.

6. TROUBLESHOOTING

If you encounter any issues with your podofu car radio, please refer to the following basic troubleshooting steps:

- **No Power:** Check all power connections and fuses. Ensure the vehicle's battery is charged.
- **No Sound:** Verify speaker connections, volume levels, and audio settings (e.g., DSP equalizer).
- **Touch Screen Unresponsive:** Try restarting the unit. If the issue persists, a factory reset might be necessary (note: this will erase user data).
- **GPS Signal Loss:** Ensure the GPS antenna is properly installed and has a clear view of the sky.
- **Bluetooth/Wi-Fi Connection Issues:** Ensure Bluetooth/Wi-Fi is enabled on both the unit and your device. Try re-pairing or reconnecting.

- **Backup Camera Not Displaying:** Check the camera's power and video connections, including the trigger wire.

For persistent issues or complex problems, please contact podofu customer support for assistance.

7. SPECIFICATIONS

Brand	podofu
Model	8 CORE 4G+64G Car Radio
Operating System	Android 13.0
CPU	8-Core Processor
RAM	4GB
ROM	64GB
Screen Size	9 Inches
Screen Type	IPS Touch Screen
Resolution	1280 * 720P
Connectivity	Bluetooth 5.0, Wi-Fi, USB
Special Features	Wireless CarPlay, Wireless Android Auto, GPS Navigation, DSP Audio, Steering Wheel Control, Split Screen, Voice Control, Mirror Link
Audio Output Mode	APE/FLAC/WAV/MP3/WMA etc.
Included Components	GPS Antenna, HD Backup Camera
Mounting Type	Dashboard Mount

High Performance Processor + Large Memory



8
Core

4G
Ram

64G
Rom

Image 7.1: High-performance processor details, including 8-Core CPU, 4GB RAM, and 64GB ROM.

8. WARRANTY AND SUPPORT

Your podofu car radio comes with a **2-year warranty**. We are committed to providing excellent customer service and support.

- **30-Day Refund Policy:** If you are not satisfied with your purchase, you may be eligible for a refund within 30 days.

- **2-Year Warranty:** Covers manufacturing defects and malfunctions under normal use.
- **Dedicated Support:** Our professional team specializes in car electronics and is available to assist with any compatibility, installation, or usage questions.

If you encounter any issues, or if the provided wiring harness does not fit your specific vehicle configuration, please contact us with a picture of the back of your original car stereo. We will endeavor to provide the correct wiring harness or further assistance.

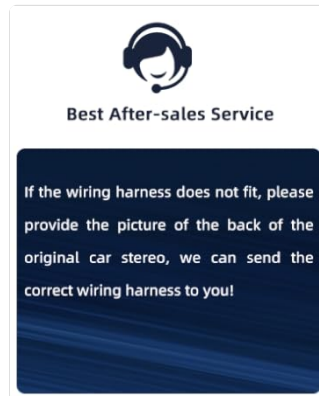


Image 8.1: Information regarding after-sales service and support for wiring harness compatibility.