

## Vixic P780BT

# Vixic P780BT Label Maker Machine User Manual

Model: P780BT | Brand: Vixic

## 1. INTRODUCTION

This manual provides detailed instructions for the Vixic P780BT Label Maker Machine. Please read this manual thoroughly before using the device to ensure proper operation and to maximize its lifespan. The Vixic P780BT is a versatile label maker designed for various applications, including office organization, small business labeling, and home use, offering wireless connectivity via Bluetooth to smartphones, tablets, and computers.



Image 1.1: The Vixic P780BT Label Maker Machine, a compact gray device with a label emerging from its output slot.

## 2. WHAT'S IN THE BOX

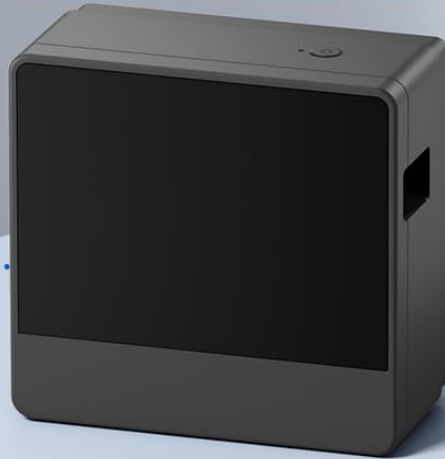
---

Upon unpacking your Vixic P780BT Label Maker Machine, please verify that all the following components are included:

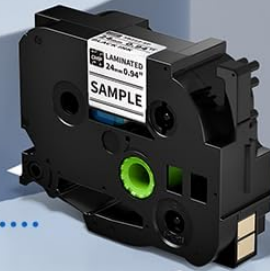
- 1 x Vixic P780BT Label Maker Machine (Gray)
- 1 x Sample Black Print on White Laminated Tape (1" x 13.1')
- 1 x USB Type-C Cable
- 1 x User Manual

# PACKING LIST

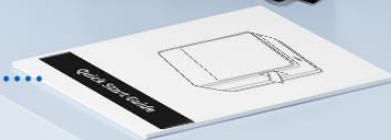
**1 X Vixic P780BT Label Maker**  
Maximum Tape Width: ~1 Inch (24mm)



**1 X 4m Black Print on White Sample Label Tape ~1" (24mm)**



**1 x User Manual**



**1 x USB Type-C Cable**  
(31.5inch / 80cm)



Image 2.1: A visual representation of the Vixic P780BT label maker and its included accessories: the label maker, a sample tape, a USB-C cable, and the user manual.

## 3. PRODUCT FEATURES AND OVERVIEW

The Vixic P780BT Label Maker is designed for efficiency and versatility, incorporating several key features:

- **Seamless Wireless Connectivity:** Connects effortlessly via Bluetooth to Android/iOS smartphones, tablets, macOS computers, and Windows PCs.
- **Extensive Customization Options:** Offers over 1500 symbols, 250 borders, and professional fonts. Supports

printing of barcodes, QR codes, and tables.

- **Durable Laminated Labels:** Utilizes 24mm label tape with quick-release backing, featuring lamination for resistance against water, chemicals, abrasion, UV, and temperature.
- **Portable and Rechargeable:** Equipped with a 1200mAh battery, rechargeable via USB-C. A full charge (2.5 hours) supports printing up to 15 label tapes (387 feet).
- **Automatic Label Cutting:** Enhances efficiency by automatically cutting labels with precision.

# INTUITIVE EDITING FOR EFFORTLESS CUSTOMIZATION

Adaptable Label Width:  
6mm-24mm(0.23"-1")

Fonts 100+

*Vixie* *Vixie* *Vixie* **Vixie**

Stickers 1500+



Languages 17+

English    Español  
بالعربية    Français

Frames 250+

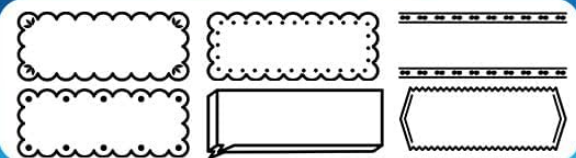


Image 3.1: An illustration of the Vixic P780BT's customization capabilities, highlighting over 100 fonts, 1500+ stickers, 17+ languages, and 250+ frames available for label design.



# MEETING YOUR INDOOR AND OUTDOOR USE NEEDS



Water  
Resistant



Oil  
Proof



Abrasion  
Proof



Fade  
Proof



Corrosion  
Proof



Strong  
Adhesive



Easy  
to Peel



Temperature  
Resistant



No Sticky  
Residue



Laminated Tape

Image 3.2: A diagram illustrating the durability features of the laminated label tape, including water, oil, abrasion, fade, corrosion, and temperature resistance, strong adhesive, easy peeling, and no sticky residue.

## 4. SETUP INSTRUCTIONS

### 4.1 Charging the Device

The Vixic P780BT comes with a built-in rechargeable 1200mAh battery. Before first use, or when the battery is low, charge the device using the provided USB Type-C cable.

1. Connect the USB Type-C cable to the charging port on the label maker.
2. Plug the other end of the cable into a compatible USB power adapter (not included) or a computer's USB port.
3. The charging indicator light will illuminate. A full charge typically takes approximately 2.5 hours.

# CONVENIENT CHARGING

*Ready for Anytime Use*



**1200mAh**

Large Capacity Battery



**15 Label Tapes  
= 387Ft**

Printable on Full Charge



**USB-C**

for Charging



**2.5 Hours**

In Full Charge



Image 4.1: A visual guide to charging the Vixic P780BT, showing the 1200mAh battery, USB-C charging, and 2.5-hour full charge time.

## 4.2 Installing Label Tape

Follow these steps to correctly install the label tape into your P780BT label maker:

1. Open the cover at the tape exit of the labeler.
2. Ensure the end of the tape is correctly threaded through both tape guides. Extend approximately 1.5 to 3 cm (3-4 cm) of label tape.
3. Turn the green gear on the tape cartridge in the direction of the arrow until the tape is taut.
4. Insert the tape cartridge into the label maker, ensuring the extended label tape passes through the tape exit slot. Close the cover securely.

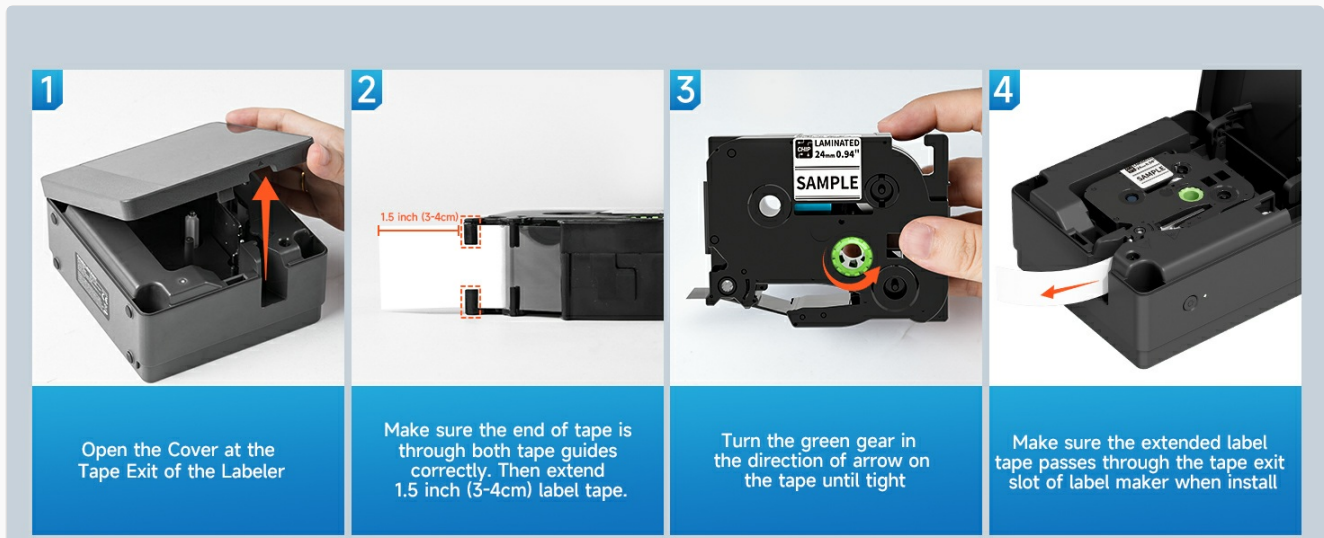


Image 4.2: A four-step visual guide demonstrating how to open the cover, prepare the tape, turn the green gear, and install the label tape cartridge into the Vixic P780BT.

### 4.3 Connecting to Mobile Devices (Print Master App)

To connect your label maker to a smartphone or tablet:

1. Install the "Print Master" application from the App Store (iOS) or Google Play Store (Android).
2. Turn on the P780BT label maker by pressing the power button.
3. Enable Bluetooth on your mobile device.
4. Open the "Print Master" app.
5. In the app, click "Tap to connect" and select your P780BT device (e.g., P780BT\_XXXX).
6. Once connected, you can choose to create a "New Label" or use existing "Templates."
7. Select the desired label width (e.g., 12mm, 18mm, 24mm).
8. Tap "Text" to input text and begin designing your label.



Image 4.3: An eight-step visual guide detailing how to install the Print Master app, turn on the label maker, enable Bluetooth, open the app, connect to the printer, choose a label, select label width, and start editing.

### 4.4 Connecting to Computers (Labelife Software)

To connect your label maker to a Windows PC or macOS computer:

1. Visit [labelife.cc](http://labelife.cc) in your web browser.
2. Click "Download" and select the appropriate driver for your operating system (Windows 64-bit, Windows 32-bit, or macOS). If using Windows, confirm your system type (64-bit or 32-bit) via system settings.
3. Install the "Labelife" software on your computer.
4. Turn on the P780BT label maker. Connect it to your computer via the USB-C cable or Bluetooth.
5. Open the Labelife software. It should automatically detect and connect to the P780BT.



6. Choose "New" to create a new label.
7. Click the "Tt" icon to add text and begin designing your label.

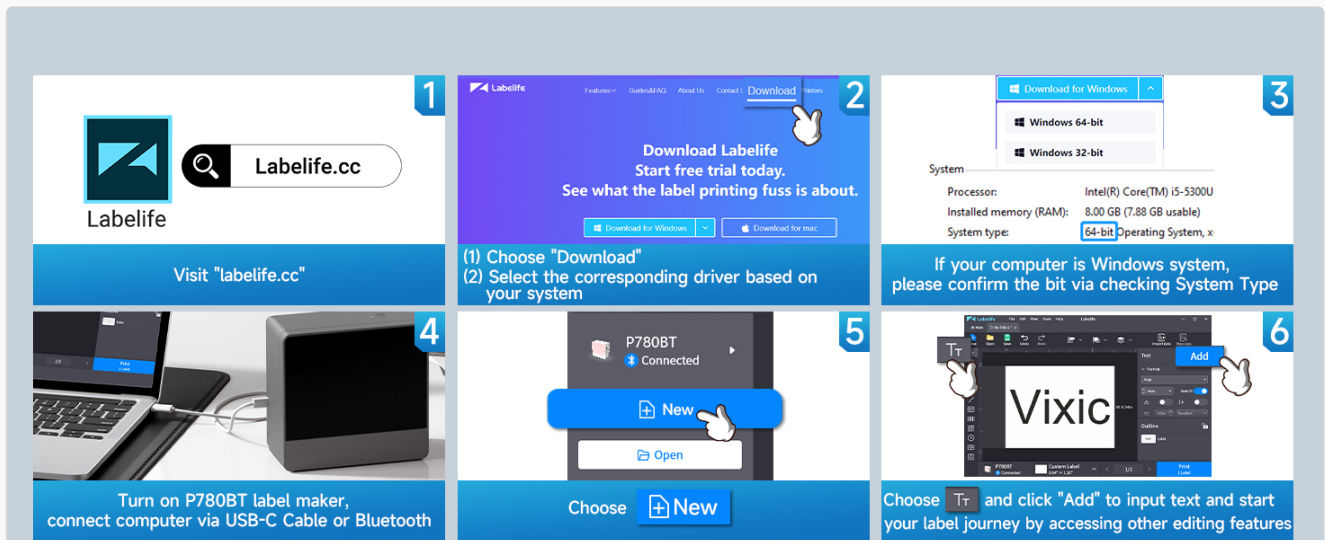


Image 4.4: A six-step visual guide demonstrating how to visit labelife.cc, download and install the software, connect the label maker via USB-C or Bluetooth, open the software, create a new label, and add text.

## 5. OPERATING INSTRUCTIONS

### 5.1 Creating and Printing Labels

Once connected to your mobile device via the "Print Master" app or computer via "Labelife" software, you can design and print labels:

1. **Design Your Label:** Use the app/software interface to input text, add symbols, borders, barcodes, QR codes, and adjust fonts and sizes.
2. **Preview:** Always preview your label design before printing to ensure accuracy.
3. **Print:** Select the print option within the app/software. The label maker will automatically print and cut the label.



# FEATURING AUTO-CUT LABEL

*Effortless Labeling Made Easy*



Image 5.1: The Vixic P780BT label maker demonstrating its automatic label cutting feature, with several cut labels scattered around the device.

## 5.2 Manual Label Cutting (Optional)

For specific applications or if printing multiple labels in a continuous strip, you may choose to manually cut labels.

- When printing a long strip of labels, the automatic cutter can be bypassed or used to cut the entire strip.
- Use scissors to carefully cut individual labels from the printed strip as needed.

When you connect mobile device or computer, you can print all text in one long label, and cut them one by one with scissor

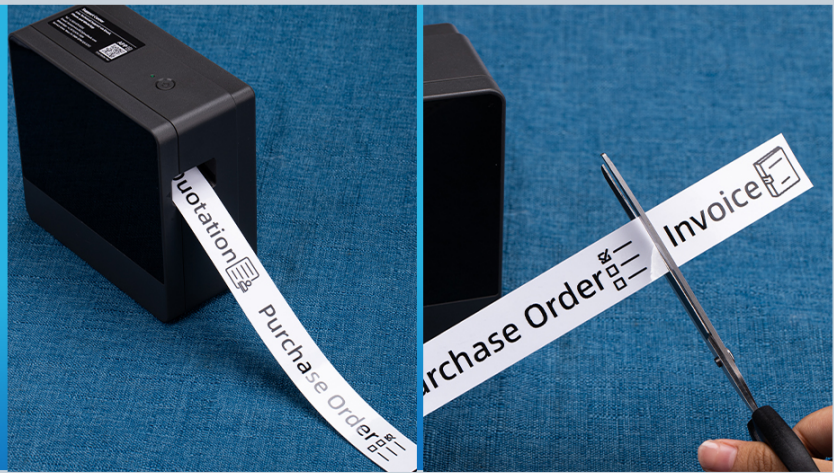


Image 5.2: A visual showing a long label strip being printed from the Vixic P780BT, followed by a demonstration of manually cutting individual labels with scissors.

## 6. MAINTENANCE

To ensure optimal performance and longevity of your Vixic P780BT Label Maker, follow these maintenance guidelines:

- **Cleaning:** Regularly wipe the exterior of the device with a soft, dry cloth. Do not use abrasive cleaners or solvents.
- **Print Head Cleaning:** If print quality degrades, refer to the app/software settings for any integrated print head cleaning functions, or gently clean the print head with a cotton swab lightly dampened with isopropyl alcohol. Ensure the device is off and dry before use.
- **Storage:** Store the label maker in a cool, dry place away from direct sunlight and extreme temperatures.
- **Battery Care:** For long-term storage, charge the battery to approximately 50% every few months to prevent deep discharge.

## 7. TROUBLESHOOTING

If you encounter issues with your Vixic P780BT, try the following solutions:

Problem	Possible Cause	Solution
Device does not turn on	Low battery; Power button not pressed correctly	Charge the device; Press and hold the power button for a few seconds
Cannot connect via Bluetooth	Bluetooth off on device/phone; Device out of range; App not open	Ensure Bluetooth is enabled; Move device closer; Open "Print Master" or "Labelife" app
Poor print quality	Print head dirty; Incorrect tape installation; Low battery	Clean print head; Reinstall tape correctly; Charge device
Label jam	Tape not installed correctly; Foreign object in tape path	Open cover, remove tape, clear any obstructions, reinstall tape

Problem	Possible Cause	Solution
Automatic cutting not working	Cutter blade obstructed; Software setting disabled	Check for obstructions; Verify cutter setting in app/software

## 8. SPECIFICATIONS

Feature	Detail
Model Name	P780BT label maker
Brand	Vixic
Product Dimensions	5.3"D x 5.1"W x 2.6"H
Item Weight	1.3 pounds
Connectivity Technology	Bluetooth, USB Type C
Printing Technology	Thermal
Printer Output	Monochrome
Maximum Print Speed (Monochrome)	20 ppm
Maximum Black and White Print Resolution	180 dpi
Maximum Media Size	24mm / 1 Inch
Compatible Devices	PC, Smartphones
Control Method	App
Special Features	Automatic Label Cutting, Bluetooth, Portable, Rechargeable, Wireless Connectable
Ink Color	Black
Compatible Cartridge	Vixic BZ Tapes (6mm, 9mm, 12mm, 18mm, 24mm)
Battery	1200mAh (included)

## 9. WARRANTY AND SUPPORT

The Vixic P780BT Label Maker Machine comes with a limited warranty. For specific warranty terms and conditions, please refer to the documentation included with your product or contact Vixic customer support.

### Customer Support

For technical assistance, troubleshooting not covered in this manual, or warranty inquiries, please contact Vixic

customer support through the following methods:

- Visit the official Vixic website for support resources.
- Contact the seller directly through the platform where the product was purchased.



© 2024 Vixic. All rights reserved.

Related Documents - P780BT

	<p><a href="#">P780BT Portable Label Maker Quick Start Guide</a></p> <p>Quick start guide for the P780BT portable label maker, covering charging, tape installation, printing from computer and mobile devices, and specifications.</p>
	<p><a href="#">P780BT Portable Label Maker Quick Start Guide</a></p> <p>Quick start guide for the P780BT portable label maker, covering charging, tape installation, printing from computer and mobile devices, and specifications.</p>
	<p><a href="#">Vixic D210S PRO Label Maker User Guide</a></p> <p>Comprehensive user guide for the Vixic D210S PRO label maker, covering setup, operation, troubleshooting, and product specifications. Learn how to create professional labels for home, office, and school.</p>
	<p><a href="#">Vixic D1600 Label Maker: Instruction Manual and Specifications</a></p> <p>Comprehensive guide to the Vixic D1600 portable label maker, covering setup, specifications, app connection, printing, maintenance, and troubleshooting.</p>
	<p><a href="#">Vixic D480BT Label Maker Quick Start Guide</a></p> <p>A quick start guide for the Vixic D480BT label maker, covering charging, tape loading, printing from the device, computer, and mobile devices.</p>
	<p><a href="#">P3200 Portable Label Maker Instruction Manual</a></p> <p>User manual for the Vixic P3200 Portable Label Maker, providing detailed instructions on setup, operation, specifications, app connection, printing, maintenance, troubleshooting, warranty, and FCC compliance.</p>