



Manuals.plus /

› MESCOOMB /

› MESCOOMB 5-in-1 Airstyler Multi Styler Instruction Manual

MESCOOMB SM-5319

MESCOOMB 5-in-1 Airstyler Multi Styler Instruction Manual

Model: SM-5319

1. PRODUCT OVERVIEW

The MESCOOMB 5-in-1 Airstyler Multi Styler is a versatile hair styling tool designed for drying, curling, volumizing, and straightening hair. It features a powerful ionic motor and comes with multiple interchangeable attachments to achieve various hairstyles with ease and efficiency.



Image 1.1: The MESCOMB 5-in-1 Airstyler Multi Styler showing the main unit and its five interchangeable attachments: two auto-wrap curlers (left and right), a round brush, an oval brush, and the main drying nozzle.

This multi-styler is engineered to minimize heat damage while providing professional-quality results, making it suitable for various hair types and styling needs.

2. SAFETY INSTRUCTIONS

Please read all safety instructions carefully before using the appliance to ensure safe operation and prevent damage.

- **Electrical Safety:** Do not use this appliance near water, in a bathroom, or near a sink. Always unplug the appliance after use.
- **Heat Warning:** The attachments and the main unit can become hot during use. Avoid direct contact with skin. Allow the appliance to cool down before handling or storing.
- **Ventilation:** Ensure the air inlets and outlets are not blocked during operation to prevent overheating.

- **Children and Pets:** Keep out of reach of children and pets. This appliance is not intended for use by persons with reduced physical, sensory, or mental capabilities unless supervised.
- **Damage:** Do not use the appliance if the cord or plug is damaged, or if it is not working properly. Contact customer support for assistance.
- **Storage:** Store the appliance in a dry place, away from direct sunlight and extreme temperatures.

3. PACKAGE CONTENTS

Verify that all items listed below are included in your package:

- 1 x MESCOMB Airstyler Main Unit
- 2 x Auto-Wrap Curlers (1 Left, 1 Right)
- 1 x Volumizing Oval Brush
- 1 x Round Brush
- 1 x Hair Dryer Nozzle
- 1 x Instruction Manual

4. SETUP

Before first use, ensure the appliance is clean and free from any packaging materials.

1. **Attach an Accessory:** Select the desired styling attachment. Align the attachment with the main unit's connection point and push it firmly until it clicks into place. Ensure it is securely fastened before use.
2. **Remove an Accessory:** To remove an attachment, hold the main unit firmly and gently twist or pull the attachment off. Allow the attachment to cool if it has been in use.
3. **Power Connection:** Plug the power cord into a standard electrical outlet.

5. OPERATING INSTRUCTIONS

The MESCOMB 5-in-1 Airstyler offers multiple styling options. Always start with clean, towel-dried hair for best results.

5.1. Power and Temperature Control

The main unit features controls for power and temperature settings. Refer to the markings on your device for specific settings (e.g., Off, Low Heat, Medium Heat, High Heat).

5.2. Hair Drying (Hair Dryer Nozzle)

Use the hair dryer nozzle for quick and efficient drying of your hair.

Quick Drying Without Heat Damage

Give long, thick hair a break from drying hassle

Brushless Motor

Airflow

110,000 RPM

23m/s



Drying Time
-50% ↓

Windspeed
+80% ↑

Energer-Saving
+100% ↑

Image 5.1: The MESCOMB Airstyler used with the hair dryer nozzle, demonstrating its quick drying capability with a brushless motor and high airflow (110,000 RPM, 23m/s).

- Attach the hair dryer nozzle to the main unit.
- Turn on the device and select your desired heat setting.
- Direct the airflow towards your hair, moving the dryer continuously to avoid concentrating heat in one area.
- The ionic technology helps reduce frizz and enhance shine during drying.

5.3. Curling (Auto-Wrap Curlers)

The auto-wrap curlers utilize Coanda technology to automatically wrap hair around the barrel, creating effortless curls.

2 Auto-Wrap Right & Left Curlers

with Coanda Technology

Simply Place a Strand of Hair Near the Curler and it Wraps, Curls, and Sets Automatically.



Image 5.2: The MESCOMB Airstyler with the auto-wrap curlers, illustrating how hair is automatically drawn and wrapped around the barrel for curling. Includes indicators for left (L) and right (R) curling directions.

- Select the appropriate curler (L for left-facing curls, R for right-facing curls) and attach it.
- Take a section of hair (approximately 1-2 inches wide) and hold it a few inches from the end.
- Bring the curler close to the hair section. The Coanda effect will automatically draw the hair onto the barrel.
- Hold for a few seconds until the curl is set. For a stronger hold, use the cool shot function if available.
- Gently release the hair from the curler. Repeat for all sections.

5.4. Volumizing and Straightening (Oval Brush)

The multi-function oval brush is designed for volumizing at the root, smoothing, and straightening hair, while adding shine.

Multi-function Oval Brush

drying volumizing smoothing straightening
all at once for a glossy blowout.

Dual Bristle Types



Volumize Hair at root



Tangle-free



Add Shine to Hair



Image 5.3: Detailed view of the MESCOMB Airstyler's multi-function oval brush, highlighting its dual bristle types designed to volumize hair at the root, prevent tangles, and add shine for a glossy blowout.

- Attach the oval brush.
- For volumizing, place the brush close to the roots and lift upwards while applying heat.
- For straightening and smoothing, brush through sections of hair from root to tip, following the brush with the airflow.
- The dual bristles help detangle and provide tension for smooth results.

5.5. Styling (Round Brush)

The round brush is ideal for creating soft waves, curls, or adding body and bounce to your hair.

- Attach the round brush.
- Take a section of hair and wrap it around the brush, starting from the ends and rolling towards the roots.
- Apply heat while slowly unwrapping the hair from the brush.

- Repeat for desired sections to create waves or curls.

One Tool Achieves Mutiples Styles

Unlock Your Hair's Potential

Drying / Curling / Volumizing / Straightening

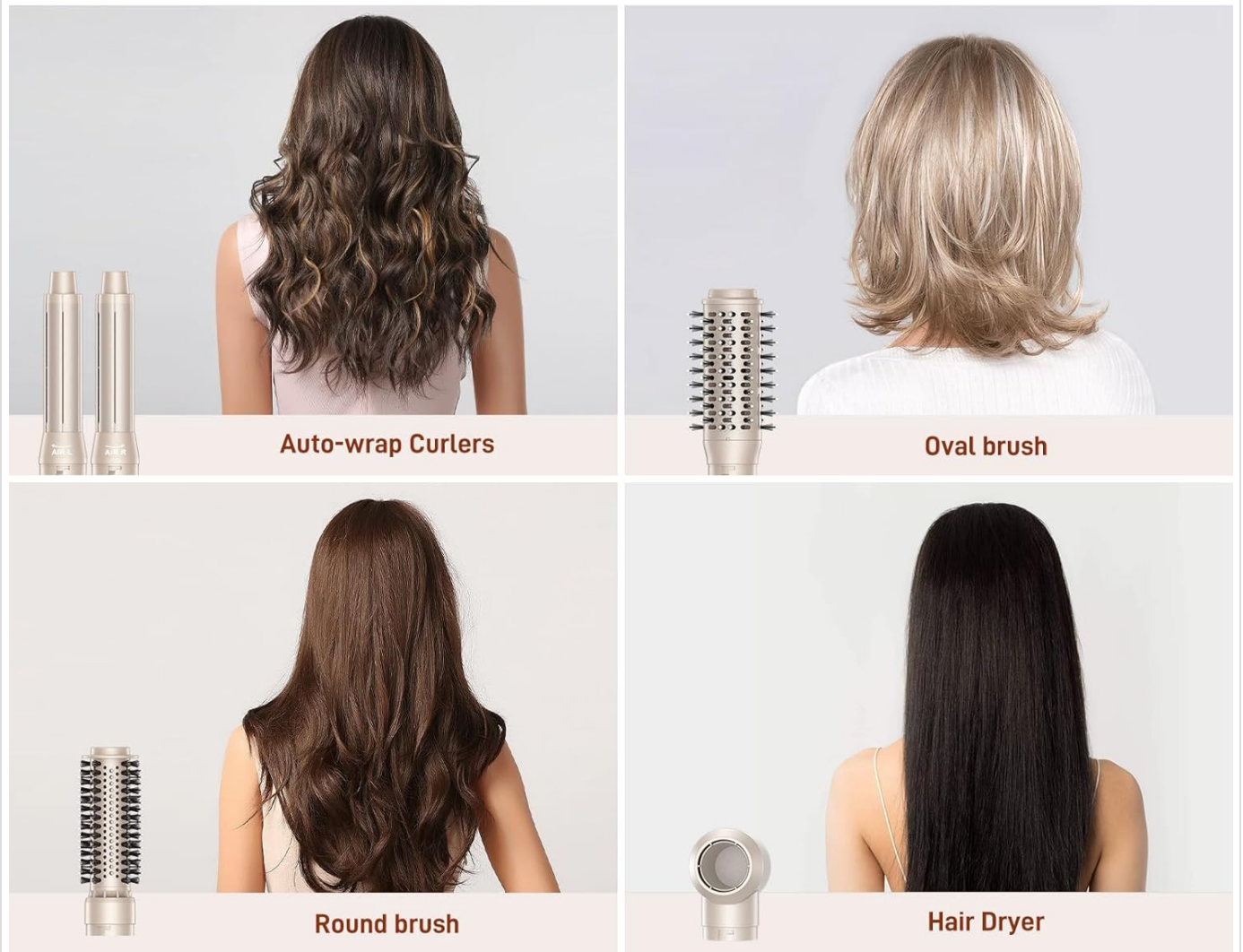


Image 5.4: Examples of various hairstyles achievable with the MESCOMB Airstyler, including drying, curling with auto-wrap curlers, volumizing with the oval brush, and straightening.

6. MAINTENANCE AND CARE

Proper maintenance ensures the longevity and optimal performance of your MESCOMB Airstyler.

- **Cleaning:** Always unplug the appliance and allow it to cool completely before cleaning. Use a soft, damp cloth to wipe the exterior of the main unit and attachments. Do not use abrasive cleaners or solvents.
- **Air Filter Cleaning:** Regularly check and clean the air inlet filter at the bottom of the main unit to prevent dust and hair buildup, which can affect performance. Gently twist and remove the filter cover, clean the filter with a soft brush or cloth, and reattach.
- **Storage:** Store the appliance and its attachments in a dry, cool place, away from direct sunlight. Avoid wrapping the power cord tightly around the unit, as this can cause damage.

7. TROUBLESHOOTING

If you encounter any issues with your MESCOMB Airstyler, refer to the following common problems and solutions:

Problem	Possible Cause	Solution
Appliance does not turn on.	Not plugged in; power outlet issue; damaged cord.	Ensure the plug is fully inserted into a working outlet. Check the power cord for visible damage.
Weak airflow or overheating.	Blocked air inlet filter; blocked air outlet.	Clean the air inlet filter. Ensure no hair or debris is blocking the air outlet.
Attachments are difficult to attach or remove.	Incorrect alignment; debris in connection point.	Ensure correct alignment and push firmly until it clicks. Check for any debris in the connection area.
Hair is not curling properly with auto-wrap curlers.	Hair section too large; hair too wet/dry; incorrect curler direction.	Use smaller hair sections. Ensure hair is damp (towel-dried). Verify you are using the correct L/R curler for the desired curl direction.

If the problem persists after trying these solutions, please contact customer support.

8. SPECIFICATIONS

Brand	MESCOMB
Model Name	SM-5319
Power	1200 Watts
Color	Champagne Gold
Item Weight	1.1 Grams <i>(Note: This weight appears unusually low and may be a data anomaly.)</i>
Product Dimensions (L x W x H)	37 x 8 x 27 cm
UPC	602581050575
Manufacturer	Jiangxi Shengming Electronic Technology Co. Ltd.

9. WARRANTY AND SUPPORT

For warranty information and customer support, please refer to the documentation provided with your purchase or contact the retailer where the product was acquired. Specific warranty terms may vary by region and retailer.

For technical assistance or inquiries, please visit the official MESCOMB website or contact their customer service department.