

Manuals.plus /

› Road Top /

› Road Top 12.3-inch Touchscreen with Wireless CarPlay/Android Auto for BMW 5 Series F10/F11 (2012-2016 NBT System) User Manual

Road Top 12.3" Screen for NBT System

Road Top 12.3-inch Touchscreen with Wireless CarPlay/Android Auto for BMW 5 Series F10/F11 (2012-2016 NBT System)

Model: 12.3" Screen for NBT System

1. INTRODUCTION

This manual provides detailed instructions for the installation, setup, and operation of your new Road Top 12.3-inch Ultra-Narrow Touchscreen. This system is designed to upgrade your BMW 5 Series F10/F11 (2012-2016 with NBT System) by adding wireless Apple CarPlay, Android Auto, and mirrorlink functionalities while retaining all original OEM features.

Video: Overview of the 12.3-inch Ultra-Narrow Linux Touchscreen for BMW 5 Series F10.

2. SAFETY INFORMATION

Warning:

- Professional installation is recommended. Incorrect installation may damage the vehicle's electrical system or the product.
- Always disconnect the vehicle's battery before beginning any electrical work to prevent short circuits.
- Ensure all connections are secure and properly insulated to avoid electrical hazards.
- Test all functions of the device thoroughly before reassembling the dashboard to confirm proper operation.
- Do not operate the device in a manner that distracts you from driving. Always prioritize road safety.

3. PACKAGE CONTENTS

Verify that all items are present in the package:

- Car Screen (12.3-inch Ultra-Narrow Touchscreen)
- Power Cable
- USB Cable

- AUX Cable
- Bracket

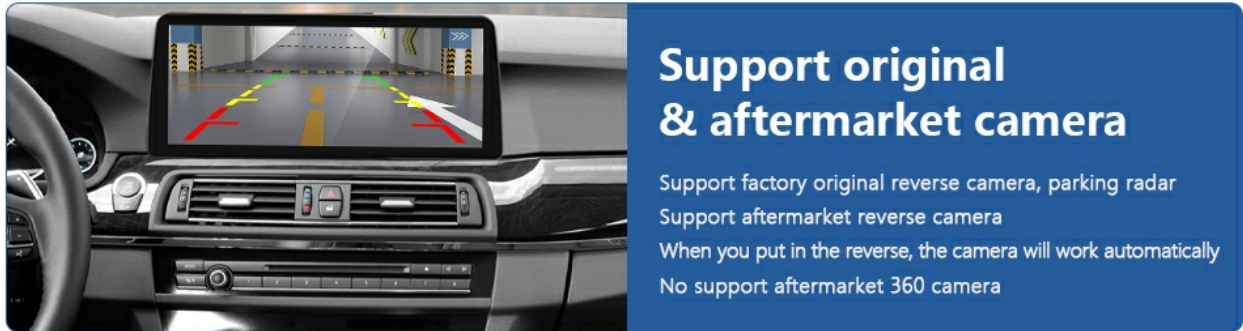


Image: Included components of the Road Top 12.3-inch Touchscreen system.

4. COMPATIBILITY

This 12.3-inch Ultra-Narrow CarPlay Touchscreen is compatible with:

- BMW 5 Series F10/F11 (2012-2016 Year) with NBT System.

Important Note: Not compatible with BMW 5 Series F07 Car, or vehicles with CIC/EVO ID5/EVO ID6 systems.

Before & After Installation Comparison



Before

After

Image: Visual guide for compatible BMW models and NBT system identification.

5. KEY FEATURES

The Road Top 12.3-inch Touchscreen offers the following enhancements:

- **Retains Original OEM System:** Keeps all original car functions, including radio, amplifier, joystick control, and factory cameras.
- **Wireless CarPlay & Android Auto:** Seamless integration for navigation, music, calls, and more.
- **Wireless Mirrorlink:** Supports screen mirroring for both iOS and Android phones.
- **High-Resolution Touchscreen:** 1920x720 HD resolution for a clear display.
- **Automatic Day/Night Mode:** Adjusts display brightness based on car headlights for comfortable viewing.
- **Camera Support:** Compatible with factory original reverse camera, parking radar, and aftermarket reverse/front view cameras (CVBS input). Does not support aftermarket 360 cameras.
- **Control Methods:** Supports hand touch control and original steering wheel control buttons.
- **Enhanced Audio:** Built-in Bluetooth module and EQ adjustable for optimal sound quality.

Product Features

It is to replace original car screen with Linux System 12.3 inch 1920*720 resolution car touchscreen, not only keep the original OEM system, but also add wireless Carplay, wireless Android Auto and wireless mirrorlink Functions.

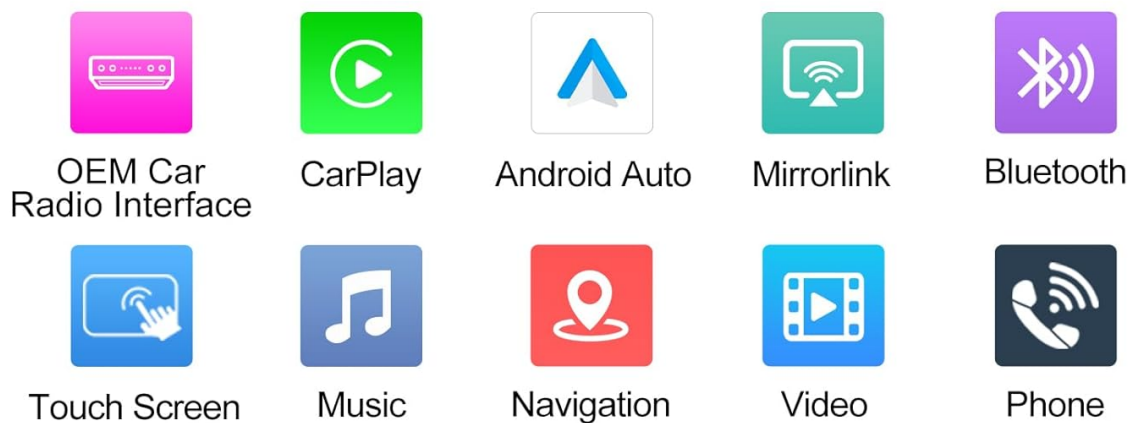


Image: Visual representation of the main features of the product.

6. INSTALLATION GUIDE

Important: Installation requires removing parts of the car dashboard. It is crucial to test all functions before fully reassembling the dashboard.

6.1 General Installation Steps

Video: Detailed installation guide for Wireless CarPlay in BMW 5 Series.

6.2 Fiber Optic Cable Transfer (If Applicable)

If your vehicle uses fiber optic cables for audio, you may need to transfer them to ensure sound functionality.

Video: Instructions on how to transfer fiber optic cables for audio connection.

6.3 Installation Comparison

Compatible Models & Year

MODEL	5-Series F10 / F11
YEAR	2012 - 2016
SYSTEM	NBT



Note: Doesn't fit for BMW 5-Series F07 Car !!!

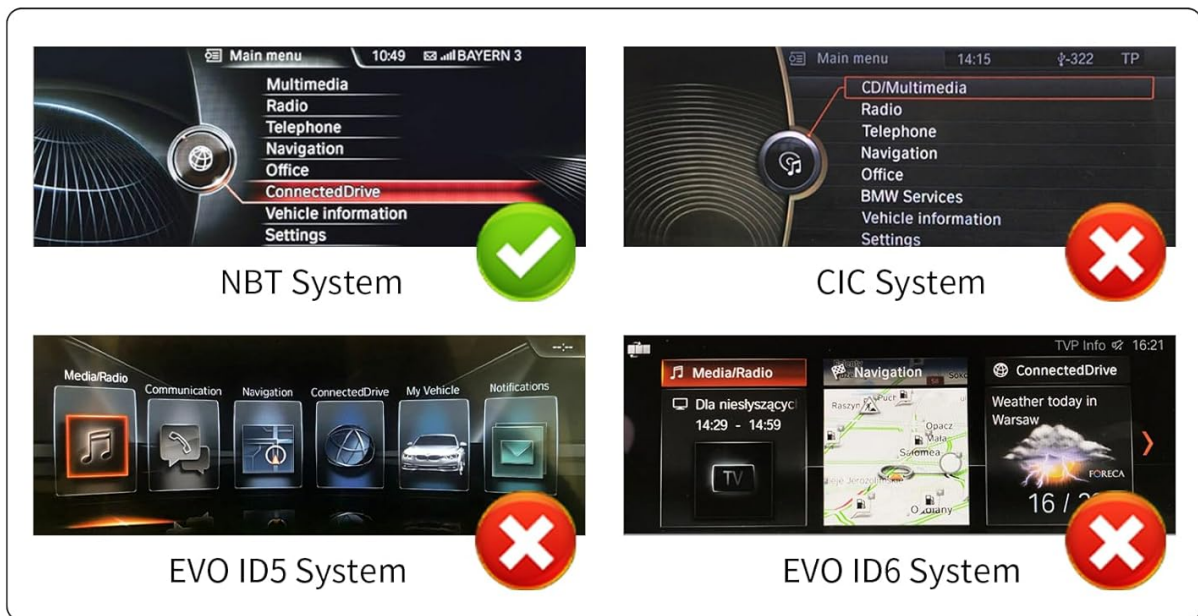


Image: Visual comparison of the dashboard before and after the new screen installation.

7. SETUP

7.1 Screen Resolution Adjustment

If the screen display is distorted or incorrect after installation, adjust the resolution settings.

Video: Guide on adjusting screen resolution settings.

7.2 Language Setup

Configure the system language to your preference.

Video: Instructions for setting the system language.

7.3 Wireless CarPlay Connection

Connect your iPhone wirelessly to the system for CarPlay functionality.

Video: Steps to connect to Wireless CarPlay.

7.4 Wireless AirPlay Connection

Mirror your iPhone screen to the display using AirPlay.

Video: How to connect to Wireless AirPlay.

8. OPERATING INSTRUCTIONS

8.1 Switching Between Systems

Easily switch between the new Linux system and your original BMW OEM system.

Video: Demonstrates switching between the new system and the original BMW system.

One Button to Switch from Carplay System to BMW OEM Car System

If you want to use car original system , please click "Original car interface" icon to enter original system.
And you can touch anywhere of the screen to return to the Linux system



Image: Visual guide for switching between CarPlay and OEM systems.

8.2 Menu Display Interface

Explore the various menu options and interface of the Linux touchscreen.

Video: Overview of the Menu Display Interface for the BMW Linux Touchscreen.

8.3 Day and Night Mode

The system automatically adjusts the display between day and night modes based on your car's original headlights for optimal visibility.

Day And Night Mode

Automatic light sensitivity adjusts the day and night mode according to your car's original headlights



Image: Illustration of automatic day and night mode adjustment.

8.4 Camera Functions

The system supports various camera inputs, including original and aftermarket options.

Camera Functions

Support factory original reverse camera, parking radar
Support aftermarket reverse camera
When you put in the reverse, the camera will work automatically
No support aftermarket 360 camera



Image: Details on supported camera functions.

12.3 inch Screen for BMW
5 Series F10/F11
2012-2016 Year with NBT



Image: Comprehensive view of retained OEM functions and camera support.

8.5 Audio Settings

The system includes a built-in Bluetooth module and adjustable EQ for optimal audio experience.

10.25 inch Screen for BMW
5 Series F10/F11
2010-2011 Year with CIC



Image: Information on AUX and Bluetooth audio support.

9. TROUBLESHOOTING

Most issues can be resolved by checking cable connections and settings. If you encounter problems, refer to the following common solutions:

- **No Sound:** Ensure all audio cables are correctly connected. If your car uses fiber optic cables, confirm they are properly transferred. Check the AUX input setting in the system.
- **Display Issues (Distorted/Incorrect):** Adjust the screen resolution in the system settings (refer to Section 7.1).
- **Connectivity Problems (CarPlay/Android Auto):** Verify that Wi-Fi and Bluetooth are enabled on your phone and the system. Ensure correct pairing and authorization.
- **Original Functions Not Working:** Double-check all wiring connections, especially those related to the OEM system. Ensure the system is correctly configured to retain OEM functions.

If problems persist, please contact Road Top Direct customer support for assistance.

10. SPECIFICATIONS

Feature	Detail
Item Weight	4.6 pounds
Package Dimensions	15.43 x 7.24 x 6.77 inches
Display Size	12.3 Inches
Resolution	720 x 1280
Special Feature	Apple CarPlay, Android Auto
Connectivity Technology	Bluetooth
Vehicle Service Type	Car
Mounting Type	Dashboard Mount

11. WARRANTY

This product comes with a standard manufacturer's warranty. Please refer to the product packaging or contact

Road Top Direct for specific warranty terms and conditions.

12. CUSTOMER SUPPORT

For any questions, technical assistance, or troubleshooting not covered in this manual, please contact Road Top Direct customer support. You can typically find contact information on the product packaging or the seller's page where you purchased the item.