

Haiway MONITOR-CAFU

Haiway 15.6-inch 1080P Multi-Port Monitor User Manual

Model: MONITOR-CAFU

1. INTRODUCTION

Thank you for choosing the Haiway 15.6-inch 1080P Multi-Port Monitor. This manual provides essential information for setting up, operating, and maintaining your new monitor. Please read it thoroughly before use to ensure optimal performance and longevity of the product.

Product Overview

The Haiway 15.6-inch monitor features a 1920x1080 Full HD resolution display with 178° viewing angles and a 60Hz refresh rate, providing clear and accurate images. It offers extensive connectivity options including HDMI, VGA, BNC, AV, and USB ports, making it suitable for various applications such as PC, laptop, CCTV security systems, and multimedia playback. The monitor includes built-in speakers and can be controlled via buttons or the included remote control. It supports both stand and wall mounting for flexible placement.



Image 1.1: Front view of the Haiway 15.6-inch 1080P Multi-Port Monitor.

Package Contents

Please verify that all items listed below are included in your package:

- 1 x Haiway 15.6" Small Monitor 1080P
- 1 x Adjustable Stand
- 1 x Stand-Sticker
- 1 x HDMI Cable
- 1 x BNC Cable
- 1 x USB Power Cable
- 1 x Power Adapter (AC-DC)
- 1 x Remote Control
- 1 x User Manual (this document)

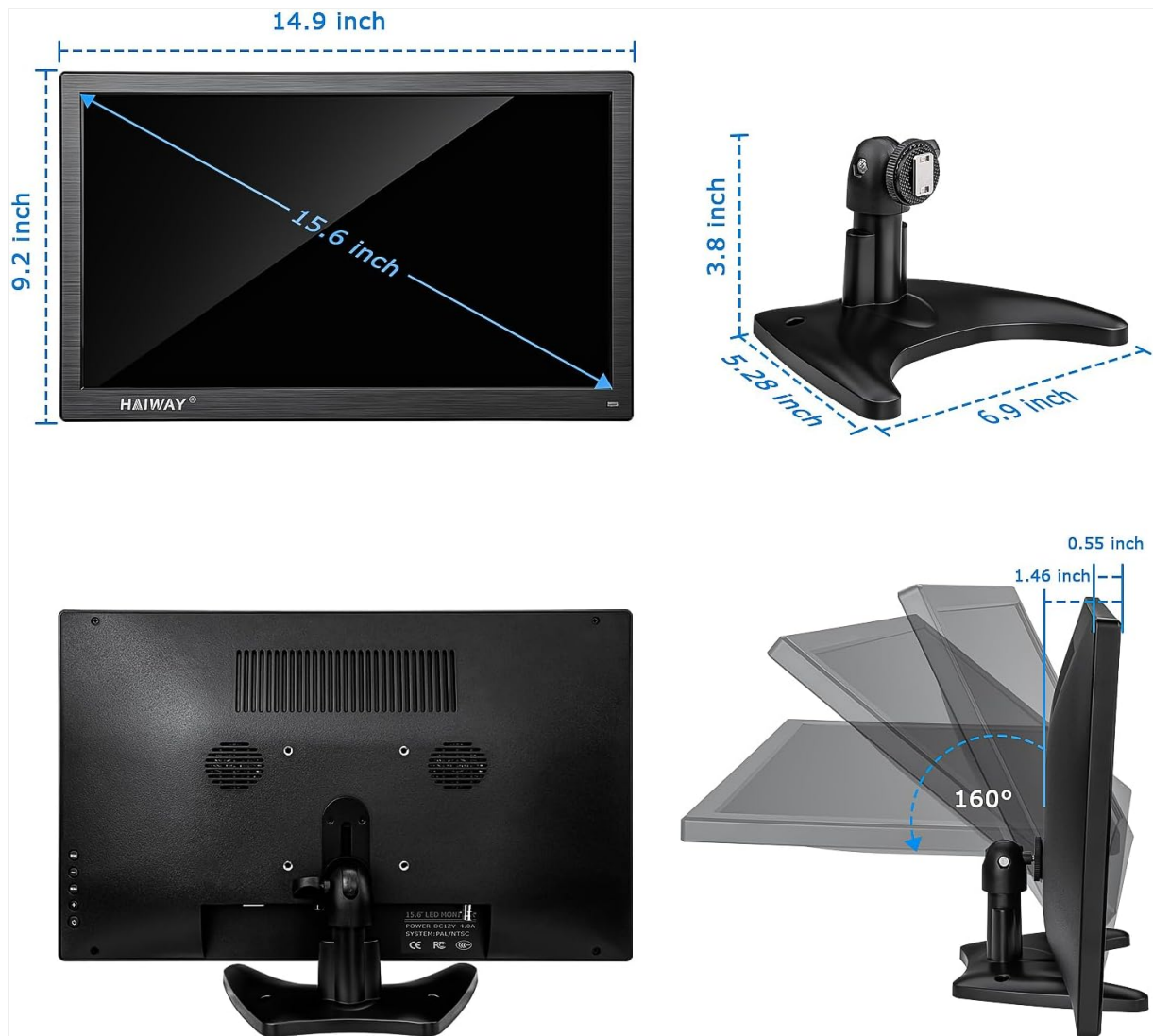


Image 1.2: All components included in the product package.

2. SAFETY INFORMATION

To prevent damage and ensure safe operation, please observe the following safety precautions:

- Do not expose the monitor to rain, moisture, or extreme temperatures.
- Avoid placing the monitor near heat sources such as radiators, heat registers, stoves, or other heat-producing appliances.
- Use only the power adapter and cables provided by the manufacturer.
- Ensure proper ventilation around the monitor to prevent overheating. Do not block ventilation openings.
- Do not attempt to open or service the monitor yourself. Refer all servicing to qualified service personnel.
- Keep the monitor away from strong magnetic fields.
- Disconnect the power plug from the outlet during lightning storms or when unused for long periods.

3. PRODUCT FEATURES

- **Full HD 1080P Display:** 15.6-inch screen with 1920x1080 resolution, 178° viewing angles, and 60Hz refresh rate for clear and vibrant visuals.
- **Wide Compatibility:** Multiple input ports including HDMI, VGA, BNC, AV, and USB for connecting various devices.

- **Flexible Mounting Options:** Supports both desktop stand mounting and VESA 75mm wall mounting (wall mount not included).
- **User-Friendly Controls:** Equipped with physical buttons and an infrared remote control for easy navigation and settings adjustment.
- **Integrated Audio:** Built-in dual speakers provide an enhanced audio experience.
- **Versatile Power Supply:** Can be powered by the included AC-DC adapter or a USB power cable for convenience.

178° WIDE VIEW & 1920X1080 High Resolution

Experience immersive visual effects like never before



Image 3.1: Illustration of the monitor's 178-degree wide viewing angle and 1920x1080 resolution capabilities.

Multi Interface Connection



Image 3.2: Diagram showing the various input ports on the back of the monitor and their compatible devices.

Easy To Use In Various Occasions

Multi-interface monitor provides versatility and convenience by offering various connection options for connecting different devices



Image 3.3: Examples of the monitor's versatility in different applications, such as with laptops, gaming consoles, and security cameras.

Built-in Dual Speakers

Sound Channel : HDMI / AV / USB signal mode



Image 3.4: Visual representation of the monitor's built-in dual speakers and sound output.

Multiple Power Supply Methods

NO built-in battery, should be used with external power plug in for power supply
Can be used anywhere with USB interface

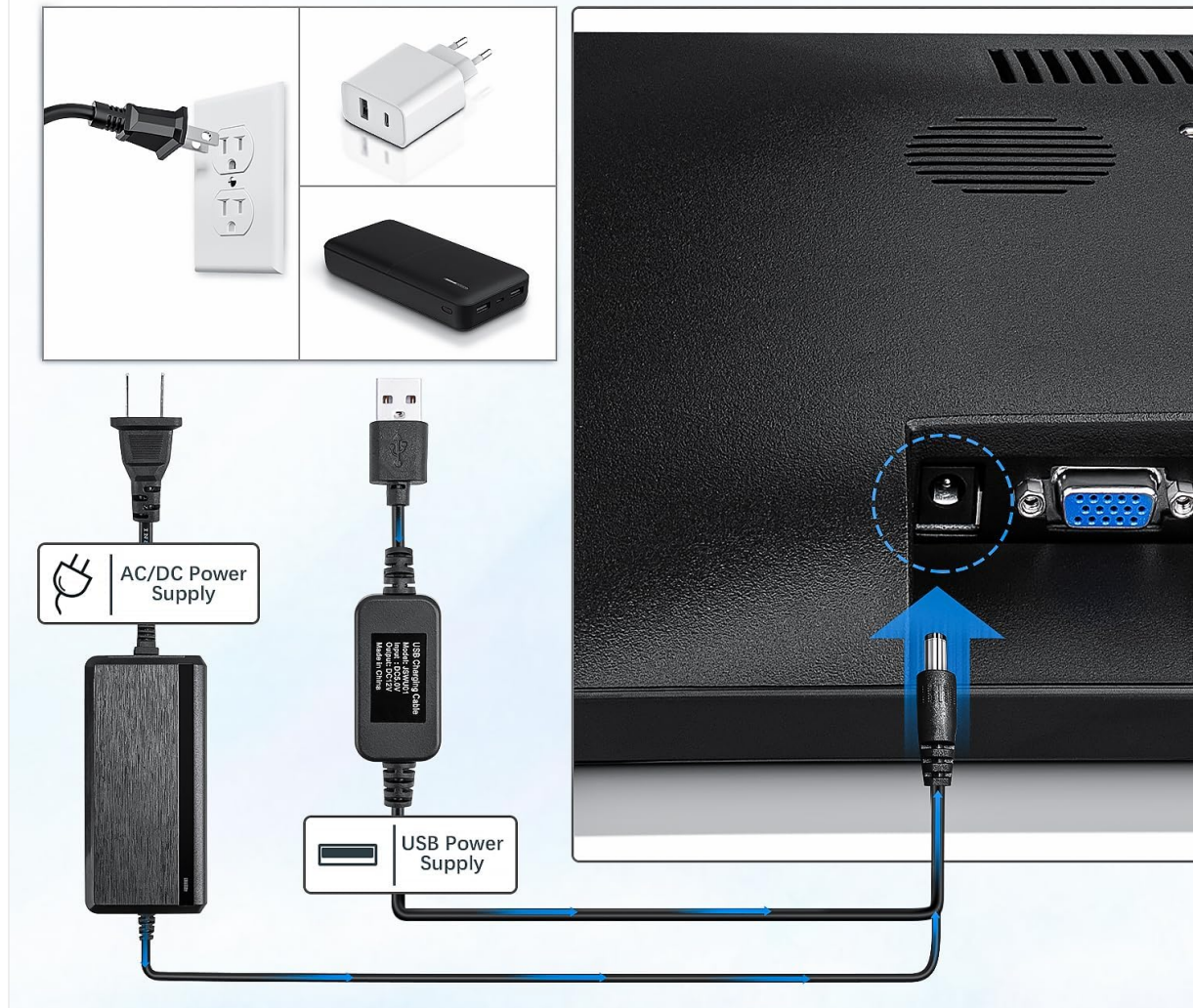


Image 3.5: Illustration of the monitor's power options, including AC/DC adapter and USB power supply.

Two-Way Mounting & Remote Control

Can mounted on desktop by provided adjustable mount stand,
or mounted on the wall with standard VESA 75 mount(not included)



Image 3.6: Depiction of the monitor's desktop stand and VESA wall mount compatibility, along with the remote control.

4. SETUP

4.1 Physical Assembly

Desktop Stand Installation:

1. Carefully unpack all components from the box.
2. Attach the adjustable stand to the back of the monitor using the provided screws. Ensure it is securely fastened.
3. Place the monitor on a stable, flat surface.

Wall Mount Installation (Optional):

The monitor supports VESA 75x75mm mounting. A wall mount bracket is not included and must be purchased separately. Follow the instructions provided with your VESA wall mount bracket for proper installation.

4.2 Connecting Devices

The monitor offers multiple input ports. Choose the appropriate cable for your device:

- **HDMI Port:** Connect to laptops, Raspberry Pi, DSLR cameras, or other devices with an HDMI output using the provided HDMI cable.

- **VGA Port:** Connect to PCs or older laptops using a VGA cable. *Note: VGA cables transmit video only, not audio.*
- **BNC Port:** Connect to CCTV security cameras or surveillance systems using the provided BNC cable.
- **AV Port:** Connect to DVD players, VCD players, or TV boxes using an AV cable (RCA composite).
- **USB Port:** This port supports MP3/MP4 format media playback from a USB drive. It does not support power output for external devices.
- **Audio Output:** Connect external speakers or headphones to the 3.5mm audio jack for enhanced sound.

4.3 Powering On

Connect the AC-DC power adapter to the monitor's DC IN port and then plug it into a power outlet. Alternatively, use the USB power cable to connect the monitor to a USB power source (e.g., a power bank or a USB wall adapter). The monitor will power on automatically or can be turned on using the power button on the monitor or remote control.

5. OPERATING

5.1 Basic Controls (Monitor Buttons)

The monitor features several buttons, typically located on the front or side, for basic control:

- **Power Button:** Turns the monitor on or off.
- **Menu Button:** Accesses the On-Screen Display (OSD) menu.
- **Up/Down Buttons:** Navigates through menu options or adjusts values.
- **Input/Source Button:** Switches between different input sources (HDMI, VGA, BNC, AV, USB).

5.2 Remote Control Functions

The included remote control provides convenient access to all monitor functions:

1. Press 'VIDEO SELECT' to enter the input selection menu. Use the navigation buttons to select the desired signal input (HDMI / VGA / AV / BNC / USB). Press 'MODE SELECT' to confirm. The display will appear after 3-5 seconds.
2. Press 'Menu' to access the screen adjustment settings.
3. Use the 'Left' / 'Right' buttons to navigate through menu pages, including Picture, Sound, Setup, etc.
4. To adjust settings like Brightness, Contrast, Treble, Bass, etc., press the 'Menu' button (which also acts as a down key). Use 'Left' / 'Right' buttons to adjust values. Press 'Menu' to confirm and 'VIDEO SELECT' to exit the page. To adjust volume, please exit the menu page first.
5. To change the OSD Language, press the 'Left' / 'Right' button to select the desired language, then press 'VIDEO SELECT' to confirm and exit.



Image 5.1: Detailed instructions for using the remote control to navigate monitor settings.

6. MAINTENANCE

6.1 Cleaning

- Always unplug the monitor before cleaning.
- Use a soft, lint-free cloth slightly dampened with water or a mild, non-abrasive screen cleaner to wipe the screen.
- For the monitor casing, use a soft, dry cloth. Avoid using strong detergents or abrasive cleaners.
- Do not spray cleaning liquids directly onto the screen or into any openings.

6.2 Storage

If storing the monitor for an extended period, disconnect it from power, pack it in its original packaging (if available), and store it in a cool, dry place away from direct sunlight and extreme temperatures.

7. TROUBLESHOOTING

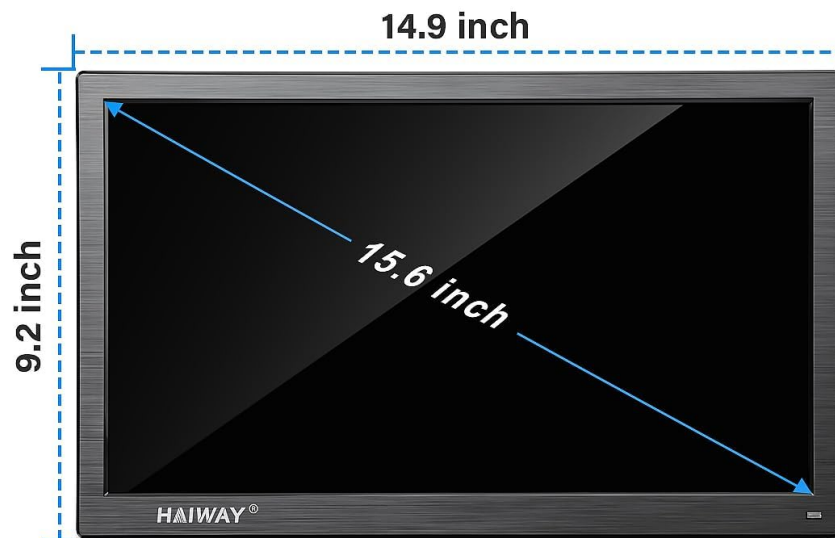
If you encounter issues with your monitor, please refer to the following common problems and solutions:

Problem	Possible Cause	Solution
No power	Power cable not connected; Power outlet faulty; Power adapter faulty	Ensure power cable is securely connected. Test the power outlet with another device. Try a different power adapter if available.
No signal	Input cable loose or incorrect; Incorrect input source selected; Source device not powered on or outputting signal	Check all input cable connections. Select the correct input source using the monitor buttons or remote. Ensure the source device is on and configured to output video.
No sound	Volume too low or muted; Audio cable not connected (for VGA); Source device audio settings	Increase volume on monitor and source device. Check if mute is active. If using VGA, ensure external speakers are connected to the monitor's audio output. For HDMI/AV, check source device audio settings.

Problem	Possible Cause	Solution
Image too dark/bright/poor color	Monitor settings incorrect	Adjust brightness, contrast, color temperature, and other picture settings via the OSD menu.
Remote control not working	Batteries dead or incorrectly inserted; Obstruction between remote and monitor; Remote sensor blocked	Replace batteries. Ensure line of sight between remote and monitor. Clear any obstructions from the monitor's IR sensor.

8. SPECIFICATIONS

Feature	Specification
Screen Size	15.6 inches
Resolution	1920 x 1080 Pixels (FHD 1080p)
Aspect Ratio	16:9
Viewing Angle	178°
Refresh Rate	60Hz
Input Ports	HDMI, VGA, BNC, AV, USB (for media playback)
Audio	Built-in Dual Speakers, 3.5mm Audio Output
Mounting	Desktop Stand, VESA 75x75mm (wall mount not included)
Control	Buttons, Remote Control
Power Supply	AC-DC Adapter, USB Power Cable
Product Dimensions	1.77 x 9.92 x 6.5 inches
Item Weight	3.76 pounds
Model Number	MONITOR-CAFU



What You Get





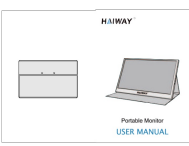



Image 8.1: Detailed dimensions of the Haiway 15.6-inch monitor and its stand.

9. WARRANTY AND SUPPORT

Haiway products are designed and manufactured to the highest quality standards. This product is covered by a limited warranty from the date of purchase. Please refer to the warranty card included in your package for specific terms and conditions.

For technical support, troubleshooting assistance, or warranty claims, please contact Haiway customer service through the retailer where the product was purchased or visit the official Haiway website for contact information.

Please have your model number (MONITOR-CAFU) and purchase information ready when contacting support.

	<p>HAIWAY 10.1" Monitor User Manual - Specs, Setup, and Applications</p> <p>Comprehensive user manual for the HAIWAY 10.1-inch monitor. Includes package contents, installation guide, remote control usage, technical specifications, and application examples.</p>
	<p>Haiway 10.1 Inch Monitor User Manual - Installation, Operation, and Specifications</p> <p>Comprehensive user manual for the Haiway 10.1 inch monitor, covering package contents, installation, operation guide, remote control usage, troubleshooting, specifications, and service support.</p>
	<p>Haiway Portable Monitor User Manual - Setup, Features, and Troubleshooting</p> <p>Comprehensive user manual for the Haiway Portable Monitor. Learn about package contents, monitor introduction, security information, specifications, button usage, OSD menu, connection methods for various devices (PC, laptop, phone, console), troubleshooting common issues, and maintenance guidelines.</p>
	<p>Haiway External Blu-ray DVD Drive User Manual</p> <p>User manual for the Haiway External Blu-ray DVD Drive, detailing package contents, product features, connection instructions, compatibility, and support information.</p>
	<p>HAIWAY 10.1" Monitor User Manual - Specs, Setup, and Applications</p> <p>Comprehensive user manual for the HAIWAY 10.1-inch monitor. Includes package contents, installation guide, remote control usage, technical specifications, and application examples.</p>
	<p>KOORUI VESA Holder Installation and Removal Guide</p> <p>Detailed instructions for installing and removing the VESA holder on KOORUI monitors, including important safety precautions and mounting specifications.</p>