

Manuals+

[Q & A](#) | [Deep Search](#) | [Upload](#)

manuals.plus /

- › [Avylet](#) /
- › [Avylet 9.26" Carplay Android Auto Screen for Car with Backup Camera User Manual](#)

Avylet RC06HL

Avylet 9.26" Portable Car Stereo User Manual

Model: RC06HL

1. INTRODUCTION

Thank you for choosing the Avylet 9.26" Portable Car Stereo. This device is designed to enhance your driving experience by integrating smart features like wireless Apple CarPlay, Android Auto, GPS navigation, and voice control directly into your vehicle, without complex installation. This manual provides detailed instructions for setup, operation, maintenance, and troubleshooting to ensure you get the most out of your new car stereo.



The Avylet 9.26-inch Portable Car Stereo, showcasing the main unit, suction cup mount, and backup camera.

2. WHAT'S IN THE BOX

Please check the package contents carefully upon unboxing:

- Portable Wireless Car Stereo Touchscreen (9.26")
- Rear Camera (with 24.5ft cable)
- Type-C to Cigarette Lighter Power Cable (11.5ft)
- AUX Audio Cable (5ft)
- Adhesive Bracket
- Suction Cup Bracket
- Spare Adhesive
- Rear Camera Adhesive x2
- Rear Camera Screws x2
- Wire Clips x4
- Installation Accessories
- User Manual (in 6 languages)
- Adhesive Gasket for Suction Cup Mount

Package Contents



A visual representation of all items included in the product package, such as the main unit, cables, brackets, and camera.

3. SPECIFICATIONS

Feature	Specification
Model Number	RC06HL
Screen Size	9.26 inches
Display Resolution	1600x600 IPS Touch Display
Connectivity	Wireless Apple CarPlay, Wireless Android Auto, Bluetooth 5.0, Wi-Fi, AUX, FM Transmitter
Voice Control	Siri, Google Assistant

Feature	Specification
GPS Navigation	Syncs with Apple Maps, Google Maps, Waze
Rear Camera	IP67 Waterproof, 24.5ft Cable, Reversing Assistance (real-time view only, no recording)
Power Input	12-32V (Cigarette Lighter Socket)
Product Dimensions	1.9"D x 9.5"W x 3.7"H
Item Weight	14.1 ounces
Audio Output Modes	Built-in Speaker, Bluetooth, AUX, FM Transmitter
Mirror Link	AirPlay (iOS), Super Link (Android & iOS)

4. SETUP AND INSTALLATION

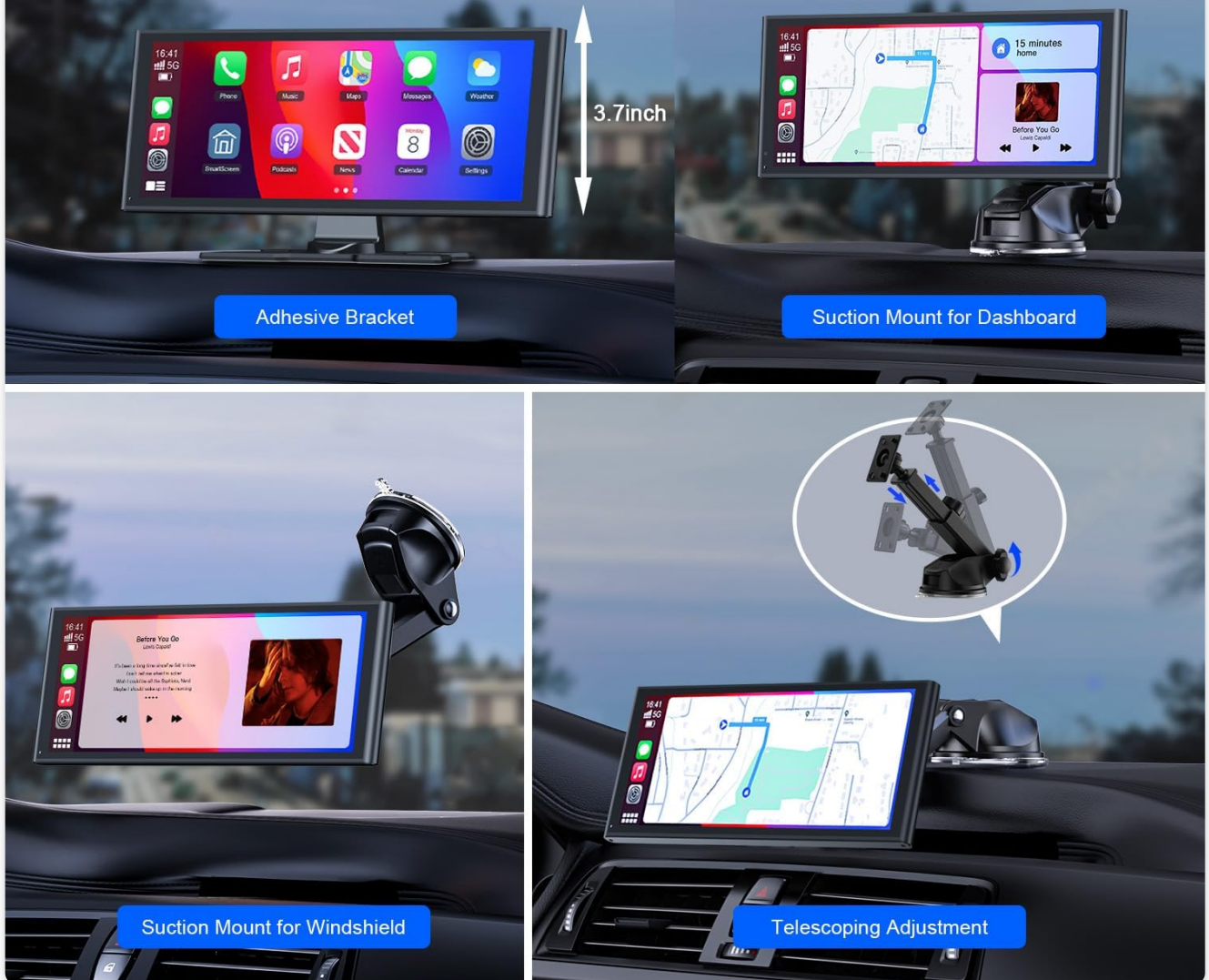
4.1 General Installation (Plug and Play)

The Avylet Portable Car Stereo is designed for quick and easy installation. No complex wiring or removal of your original car radio is required.

1. Choose your preferred mounting method (Adhesive Bracket or Suction Cup Bracket).
2. Securely attach the main unit to the chosen bracket.
3. Plug the Type-C to Cigarette Lighter Power Cable into your car's cigarette lighter socket (12-32V).
4. Power on the device.

Multiple Installation Methods

Adjustable bracket allows you to install more freely.



The device supports various installation methods, including adhesive and suction cup mounts, allowing for flexible placement on your dashboard or windshield.

4.2 Mounting Options

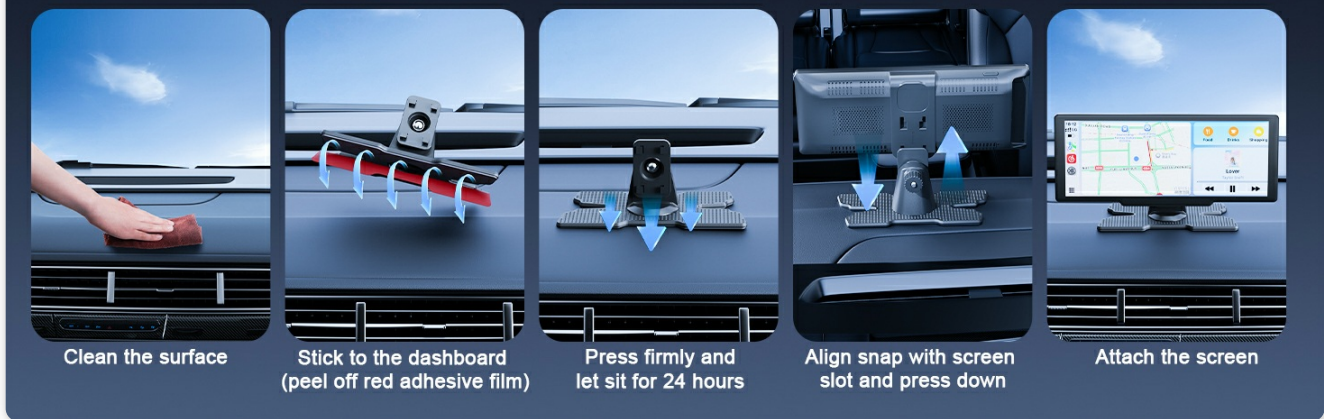
Two types of brackets are provided for versatile installation:

- **Adhesive Bracket:** Ideal for a more permanent and low-profile installation on your dashboard.
- **Suction Cup Bracket:** Offers flexibility for placement on the dashboard or windshield, and is easily removable.

4.2.1 Suction Cup Bracket Installation

1. Clean the surface where you intend to mount the suction cup.
2. Stick the adhesive pad (peel off film) to the cleaned surface and let it sit for 24 hours for optimal adhesion.
3. Peel off the transparent film from the suction cup.
4. Press the suction cup firmly onto the adhesive pad and lock it into place.
5. Wait 12-24 hours before attaching the screen to ensure the suction cup is securely fastened.

Quick Installation Guide-Adhesive Bracket



Step-by-step visual guide for installing the device using the suction cup bracket.

4.2.2 Adhesive Bracket Installation

1. Clean the dashboard surface thoroughly.
2. Stick the adhesive bracket to the dashboard (peel off red adhesive film).
3. Press firmly and let it sit for 24 hours to ensure strong adhesion.
4. Align the screen with the bracket's slot and press down to attach.

Customize Startup Screen

Send us your favorite picture (scenery, pet, family, or friends' photo) or your car logo, and we'll customize a personalized startup screen just for you.

[Free Customize Startup Screen](#)

Step-by-step visual guide for installing the device using the adhesive bracket.

4.3 Rear Camera Installation

The included rear camera provides real-time rearview for parking and reversing assistance.

1. Mount the rear camera at the back of your vehicle, ensuring a clear view.
2. Connect the rear camera's red wire to your car's reverse light (positive lead). This enables automatic display of the reverse image when backing up.
3. Connect the camera's video cable to the AV IN port on the portable car stereo.

Note: This camera is for reverse assistance and real-time rear view only; it does not support recording.

Rear Camera Installation



A diagram illustrating the connection points for the rear camera to the portable car stereo and the vehicle's reversing light.

5. OPERATING INSTRUCTIONS

5.1 Wireless Apple CarPlay & Android Auto

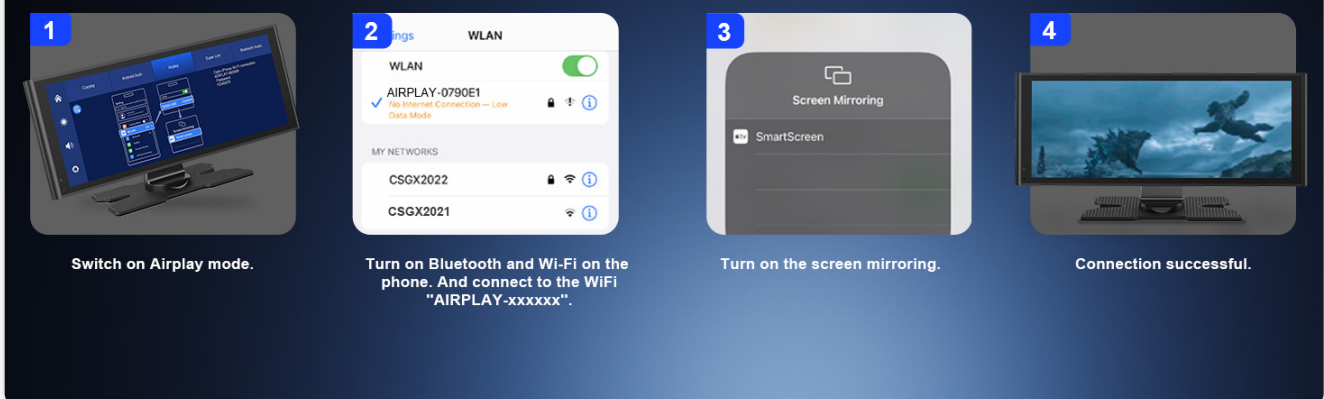
Connect your smartphone wirelessly to access navigation, music, calls, and more.

5.1.1 Wireless Apple CarPlay Connection Steps

1. Switch the car stereo to CarPlay mode.
2. On your iPhone, turn on Wi-Fi and Bluetooth. (Wi-Fi only needs to be enabled, no connection required at this stage).
3. Select the device named "T86 xxxx" for Bluetooth connection, pair it, and allow CarPlay to be used.
4. Connection successful.

Note: After successful connection, ensure you have turned on your mobile data to use app functions. Your iPhone must be running iOS 9 or newer. For enabling voice assistant Siri, ensure the device's microphone is on and Siri is enabled on your iPhone.

Wireless Airplay Mirror Link Steps



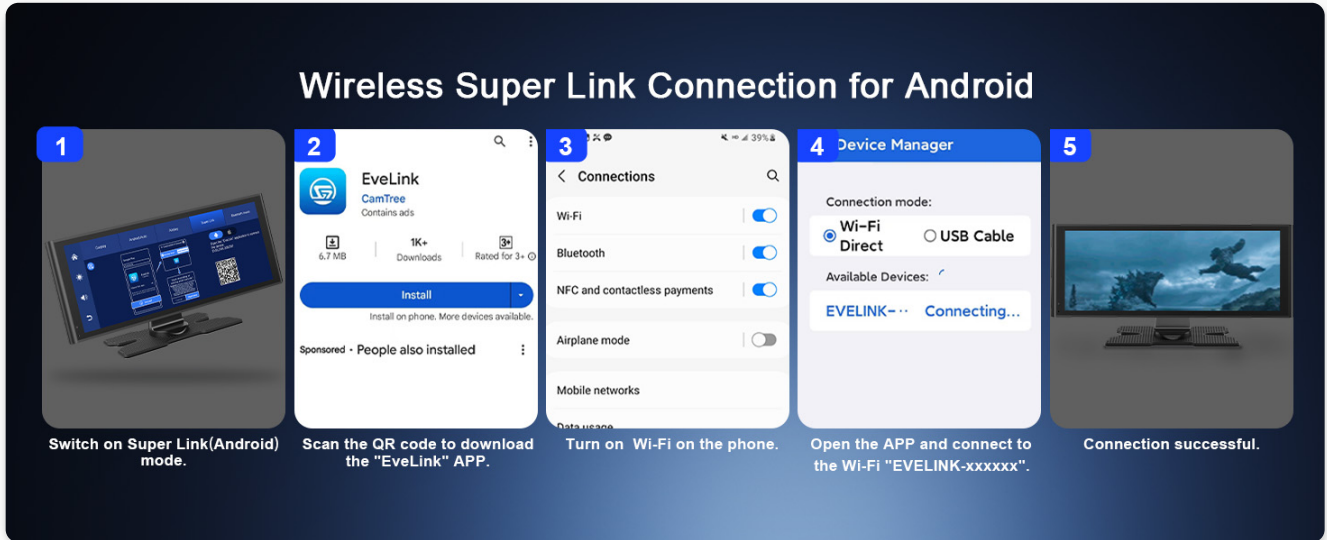
A visual guide detailing the four steps to connect your iPhone to the car stereo via Wireless Apple CarPlay.

5.1.2 Wireless Android Auto Connection Steps

1. Switch the car stereo to Android Auto mode.

2. On your Android phone, turn on Bluetooth and Wi-Fi. Confirm that your phone has installed the latest Android Auto app. (Wi-Fi only needs to be enabled, no connection required at this stage).
3. Select the device named "T86 xxxx" for Bluetooth connection, pair it, and connect to Android Auto.
4. Connection successful.

Note: After successful connection, ensure you have turned on your mobile data to use app functions. Any phone running Android 11.0 or newer. Google or Samsung phones running Android 10.0 or newer.



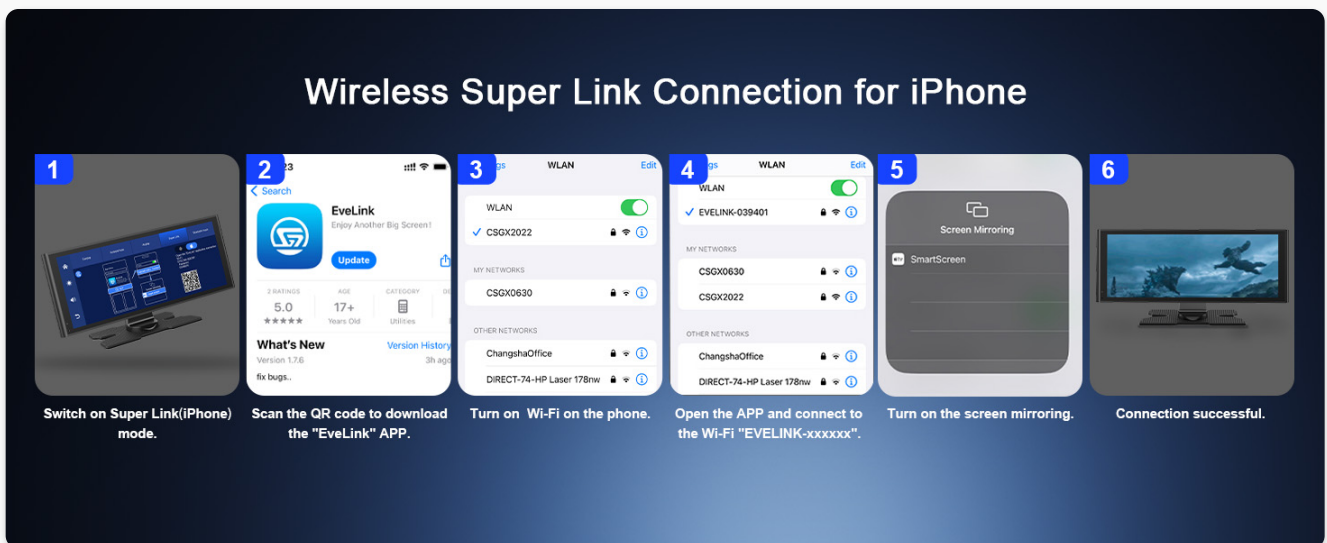
A visual guide detailing the four steps to connect your Android phone to the car stereo via Wireless Android Auto.

5.2 Wireless Mirror Link (AirPlay & Super Link)

Project your phone's screen content onto the 9.26-inch display for enhanced visual and auditory enjoyment.

5.2.1 Wireless AirPlay Mirror Link Steps (for iOS)

1. Switch the car stereo to AirPlay mode.
2. On your iPhone, turn on Bluetooth and Wi-Fi. Connect to the Wi-Fi network named "AIRPLAY-xxxxxx".
3. Turn on screen mirroring from your iPhone's control center.
4. Connection successful.



A visual guide detailing the steps to mirror your iPhone screen to the car stereo using AirPlay.

5.2.2 Wireless Super Link Connection for Android

1. Switch the car stereo to Super Link (Android) mode.

2. Scan the QR code displayed on the screen to download the "EveLink" app.
3. Turn on Wi-Fi on your phone.
4. Open the EveLink app and connect to the Wi-Fi network named "EVELINK-xxxxxx".
5. Connection successful.

5.2.3 Wireless Super Link Connection for iPhone

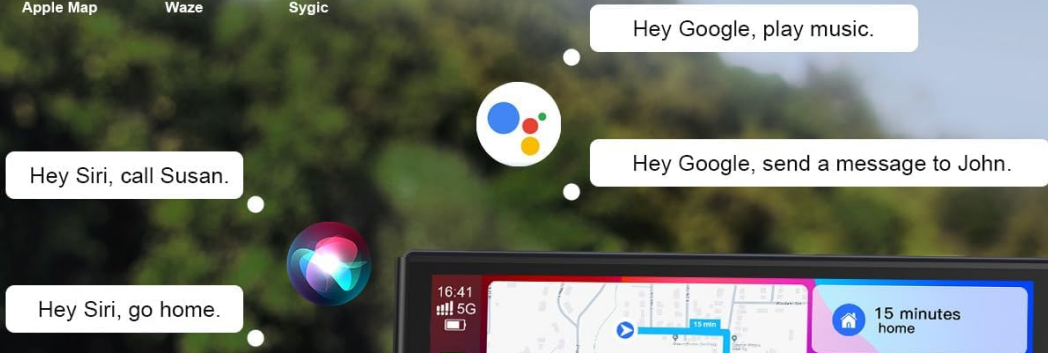
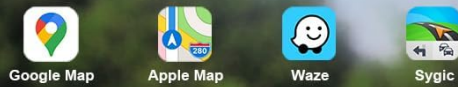
1. Switch the car stereo to Super Link (iPhone) mode.
2. Scan the QR code displayed on the screen to download the "EveLink" app.
3. Turn on Wi-Fi on your phone.
4. Open the EveLink app and connect to the Wi-Fi network named "EVELINK-xxxxxx".
5. Turn on screen mirroring from your iPhone's control center.
6. Connection successful.

5.3 Smart Voice Control & GPS Navigation

Utilize Siri or Google Assistant for hands-free control of navigation, calls, messaging, and multimedia. The 9.26-inch HD display seamlessly integrates with Apple CarPlay and Android Auto, syncing with Apple Maps, Google Maps, and Waze, allowing you to easily view maps on a larger screen and enhancing driving safety.

Voice Control & GPS Navigation

Free your hands and provide you with a safer and more comfortable driving experience.



Illustrates how voice commands (Siri/Google Assistant) can be used for navigation, calls, messaging, and music, alongside a display of GPS navigation.

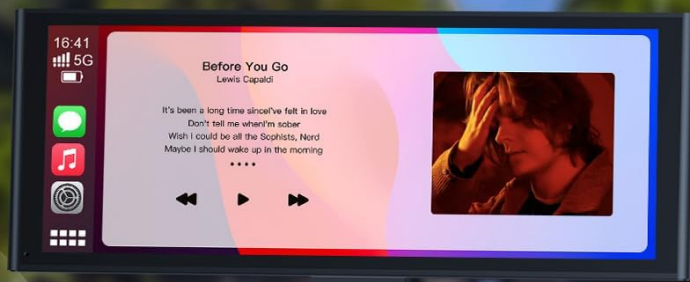
5.4 Audio Output Modes

The device offers four audio output options for a customized listening experience:

- **Built-in Speaker:** Audio plays directly from the portable stereo's integrated speaker.
- **Bluetooth:** Wirelessly transmit audio to your car's speakers via Bluetooth (if your car has Bluetooth functionality).
- **AUX Cable:** Use the provided AUX cable to connect to your car's AUX input jack for louder, lossless audio.
- **FM Frequency Syncing:** Transmit audio to your car speakers by syncing the device's FM frequency with your car's radio.

Four Audio Output Modes

Enjoy a musical journey.



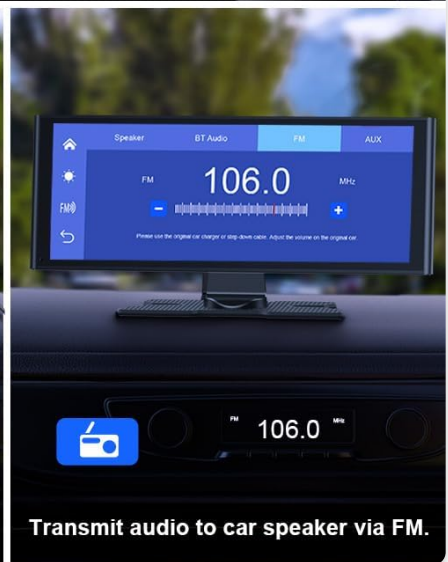
Transmit audio to your car speakers via Bluetooth for a louder sound.
(Please make sure your car has Bluetooth functionality.)



Built-in Speaker



Transmit audio to car speaker via AUX.



Transmit audio to car speaker via FM.

Visual representation of the four audio output options: built-in speaker, Bluetooth, AUX, and FM transmission.

5.5 Brightness Adjustment

The screen brightness can be adjusted manually or set to automatically adjust based on the time of day, ensuring optimal visibility in various lighting conditions.

Two Kinds of Brackets

Select the most suitable installation method to ensure it doesn't obstruct your line of sight, ensuring driving safety.



Please press this button to ensure it is securely fastened.



Suction Cup Bracket



Adhesive Bracket



Image showing the brightness adjustment interface on the screen, with a slider to control brightness levels.

5.6 Customize Your Startup Screen

You can personalize the startup screen with your favorite image, car brand logo, or a picture of family, friends, pets, or landscapes. Contact the support team (refer to information on the package) for this complimentary service.

Widely Compatible with vehicles (12-32V)

Even old vehicles can enjoy smart features.



Cars



SUVs



CRVs



Trucks



Pickups



Mini Vans



An image demonstrating the ability to customize the device's startup screen with personal photos or car logos.

5.7 Screen Saver

If there is no operation within a set time, the screen will automatically go black to help save your vehicle's battery power. Options for screen saver duration include OFF, 10s, 30s, and 1 min.

Wireless Apple CarPlay Connection Steps

1 Switch on CarPlay mode.

2 Turn on WiFi and Bluetooth on the phone. (WiFi only needs to be enabled, no connection required.)

3 Select the device named "T86 xxxx" for Bluetooth connection, pair it, and allow CarPlay to be used.

4 Connection successful.

Note:
 1. After successful connection, please ensure that you have turned on your mobile data to use app functions.
 2. Your iPhone must be running iOS 9 or newer.
 3. For enabling voice assistant Siri, ensure the device's microphone is on and Siri is enabled on your iPhone.

An image showing the screen saver function, where the display turns black after a period of inactivity to conserve power.

6. MAINTENANCE

To ensure the longevity and optimal performance of your Avylet Portable Car Stereo, follow these simple maintenance guidelines:

- **Cleaning:** Use a soft, dry cloth to wipe the screen and exterior. For stubborn smudges, a slightly damp, lint-free cloth can be used. Avoid abrasive cleaners or solvents.
- **Temperature:** Avoid exposing the device to extreme temperatures (very hot or very cold) for extended periods, as this can affect its electronic components.
- **Storage:** If storing the device for a long time, disconnect it from power and store it in a cool, dry place.
- **Cable Care:** Ensure all cables are not pinched or bent sharply, which can damage the internal wires.

7. TROUBLESHOOTING

If you encounter any issues with your Avylet Portable Car Stereo, please refer to the following common problems and solutions:

Problem	Possible Cause / Solution
Device does not power on.	Ensure the cigarette lighter power cable is securely plugged into both the device and the car's socket. Check if the car's cigarette lighter socket is receiving power.
Cannot connect to Apple CarPlay/Android Auto wirelessly.	Ensure Wi-Fi and Bluetooth are enabled on your phone. Verify that you have selected the correct device name for Bluetooth pairing. Make sure your phone's operating system is compatible (iOS 9+ for CarPlay, Android 10+ for Android Auto). Restart both the device and your phone.
No audio or poor audio quality.	Check the selected audio output mode (built-in speaker, Bluetooth, AUX, FM). If using Bluetooth or FM, ensure your car's audio system is correctly configured. If using AUX, ensure the cable is fully inserted. Adjust volume on both the device and your car's audio system.

Problem	Possible Cause / Solution
Rear camera image is not displayed.	Ensure the camera cable is securely connected to the AV IN port. Verify that the camera's red wire is correctly connected to the car's reverse light positive lead. Check camera settings on the device.
Screen mirroring (AirPlay/Super Link) not working.	Ensure your phone is connected to the device's Wi-Fi network (e.g., "AIRPLAY-xxxxxx" or "EVELINK-xxxxxx"). Confirm screen mirroring is activated on your phone. For Super Link, ensure the EveLink app is installed and running.
Device is not compatible with Huawei models.	As stated in the product features, this device is not compatible with Huawei phone models.
Cannot connect both Avylet dash cam and car screen to the same phone simultaneously.	Both devices require a Wi-Fi connection to the phone. Therefore, the same phone cannot be connected to both devices at the same time. Disconnect one to use the other.

If the problem persists after trying these solutions, please contact Avylet customer support for further assistance.

8. WARRANTY AND SUPPORT

Your Avylet Portable Car Stereo is backed by our comprehensive coverage, including **a2-year warranty** and lifelong technical support.

- **Warranty Period:** 2 years from the date of purchase.
- **Technical Support:** Lifelong support for any operational or technical queries.

Contacting Support

For any inquiries, technical assistance, or warranty claims, please reach out to our dedicated customer care team:

- **Email:** Refer to the information provided on the product package or instruction manual for the direct support email address (e.g., service@avylet.com).
- **Website:** Visit the official Avylet website for FAQs and support resources.

We are committed to responding to your inquiries within 12 hours.



Avylet's commitment to customer service, highlighting global availability, 24/7 support, and product certifications.

