

ASUS ASUS A31 PLUS WHITE

ASUS A31 Plus White ATX Case User Manual

Model: ASUS A31 PLUS WHITE

INTRODUCTION

The ASUS A31 PLUS White ATX Mid-Tower Gaming Case is designed for PC enthusiasts seeking a blend of aesthetics and performance. It features a pillar-free, dual-sided tempered glass design for an unobstructed view of internal components. This case supports advanced cooling solutions and large graphics cards, ensuring compatibility with high-performance builds. Four pre-installed ARGB fans and an angled base contribute to efficient cooling and enhanced visual appeal. The design also incorporates features for streamlined cable management, particularly for motherboards with hidden connectors.

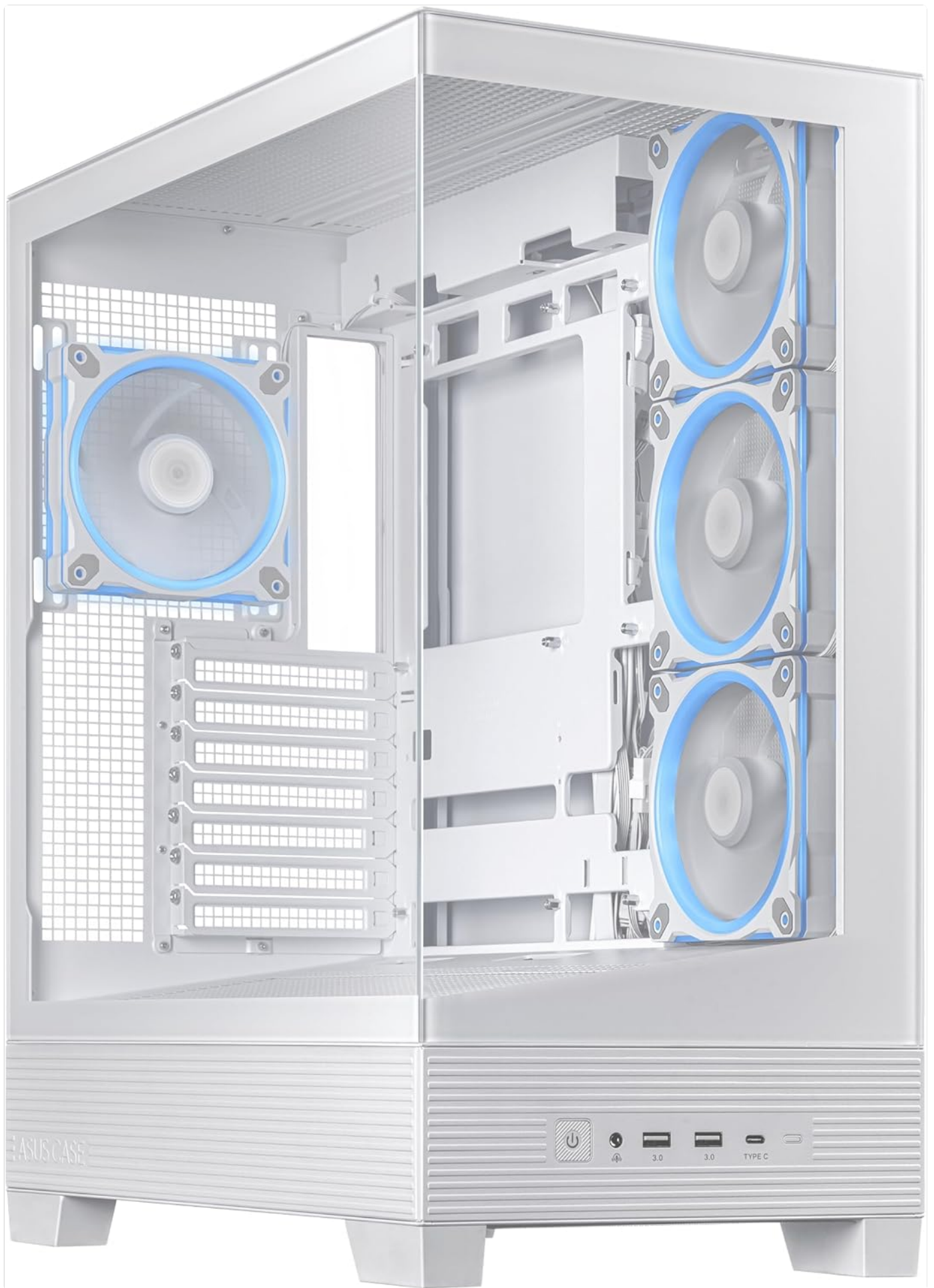


Figure 1: Front-side view of the ASUS A31 Plus White ATX Case, showcasing the tempered glass panels and pre-installed ARGB fans with blue illumination.

SETUP AND COMPONENT INSTALLATION

This section provides guidance on setting up your ASUS A31 Plus case and installing essential PC components.

1. Unpacking and Initial Inspection

Carefully remove the case from its packaging. Inspect for any signs of damage during transit. Ensure all accessories listed in the packing list are present. The case comes with pre-installed ARGB fans.



Figure 2: The ASUS A31 Plus White ATX Case alongside its retail packaging, illustrating the product's presentation upon unboxing.

2. Motherboard Installation (Hidden Connector Support)

The ASUS A31 Plus is designed to support motherboards with hidden connectors, facilitating cleaner cable management. Align your ATX motherboard with the standoffs inside the case and secure it with screws. For motherboards with hidden connectors, route the power and data cables through the designated cutouts behind the motherboard tray.

HIDDEN CONNECTORS

ASUS A31 PLUS is compatible with the ROG MAXIMUS Z790 HERO BTF hidden-connector motherboard to maximize clean cable management



Figure 3: An illustration of a motherboard with hidden connectors, demonstrating how the ASUS A31 Plus case is designed to accommodate such configurations for optimized cable routing.

3. Graphics Card and Radiator Installation

The case offers broad compatibility for high-performance components. It supports graphics cards up to 380mm in length. For cooling, it accommodates radiators up to 360mm, with clearance for fans up to 80mm thick at the top.

BROAD COMPATIBILITY

ASUS A31 PLUS supports up to 360mm radiators, graphics cards up to 380mm in length, and CPU coolers up to 165mm in height



Figure 4: An internal view of the ASUS A31 Plus case, highlighting its spacious interior designed to support large graphics cards and 360mm radiators, indicating broad component compatibility.

CAPABLE COOLING

80mm of clearance for AIO coolers at the top, allowing for thicker radiators and larger fans to enhance cooling performance



Figure 5: A detailed view illustrating the 80mm clearance at the top of the ASUS A31 Plus case, allowing for the installation of thicker radiators and larger fans for enhanced cooling performance.

4. Cable Management

The ASUS A31 Plus provides 34mm of cable management space behind the motherboard tray. Utilize the integrated cable ties and routing channels to organize your cables for optimal airflow and a clean interior aesthetic.

CABLE MANAGEMENT

ASUS A31 PLUS provides 34mm wide cable management space to help you keep your wiring tucked away and tidy



Figure 6: A transparent overlay demonstrating the 34mm wide cable management space available in the ASUS A31 Plus case, designed to help users keep wiring tidy and out of sight.

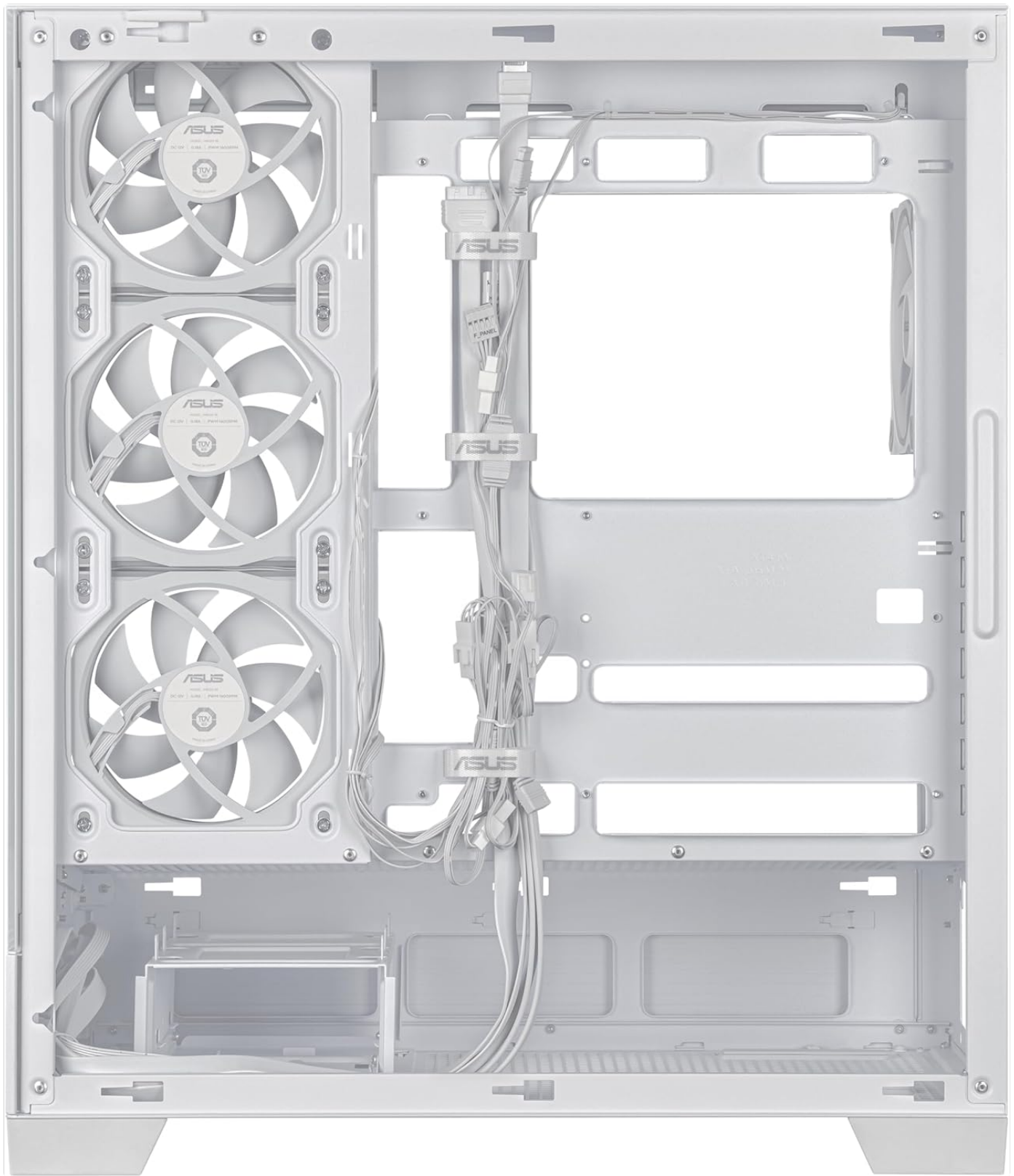


Figure 7: The rear interior view of the ASUS A31 Plus case, showing the pre-routed cables and ample space for additional cable organization behind the motherboard tray.

5. Front I/O Panel Connections

Connect the front I/O panel cables (USB 3.0, USB Type-C, audio, power, reset, LED) to the corresponding headers on your motherboard. Refer to your motherboard manual for specific header locations.



Figure 8: A close-up view of the front I/O panel on the ASUS A31 Plus case, featuring the power button, audio jacks, USB 3.0 ports, and a USB Type-C port.

OPERATING CONSIDERATIONS

While a PC case does not "operate" in the traditional sense, its design significantly impacts the operation of the components within. The ASUS A31 Plus is engineered for optimal airflow and component visibility.

- **Airflow Optimization:** The case features four pre-installed ARGB fans and an 8° angled base, which enhances airflow efficiency for better thermal performance. Ensure these fans are connected to your motherboard or a fan controller for proper operation and ARGB lighting control.
- **Panoramic View:** The dual tempered glass panels provide an unobstructed view of your internal components. Keep the interior tidy for the best visual experience.

8° ANGLED BASE

The 8° angle of the base integrates functionality and elegance, promoting efficient cooling and offering a wider view for maximum immersive experiences



Figure 9: A side view of the ASUS A31 Plus case, illustrating the subtle 8-degree angled base designed to improve airflow and provide a wider viewing angle of the internal components.

MAINTENANCE

Regular maintenance helps ensure optimal performance and longevity of your PC components within the case.

- **Dust Cleaning:** Periodically clean dust filters and internal components using compressed air. Dust accumulation can impede airflow and lead to higher temperatures.
- **Tempered Glass Panels:** Clean the tempered glass panels with a soft, lint-free cloth and a non-abrasive glass cleaner. Avoid harsh chemicals that could damage the glass or coatings.
- **Fan Maintenance:** Ensure fans are free from dust and obstructions. If a fan becomes noisy or stops spinning, inspect it for debris or consider replacement if necessary.

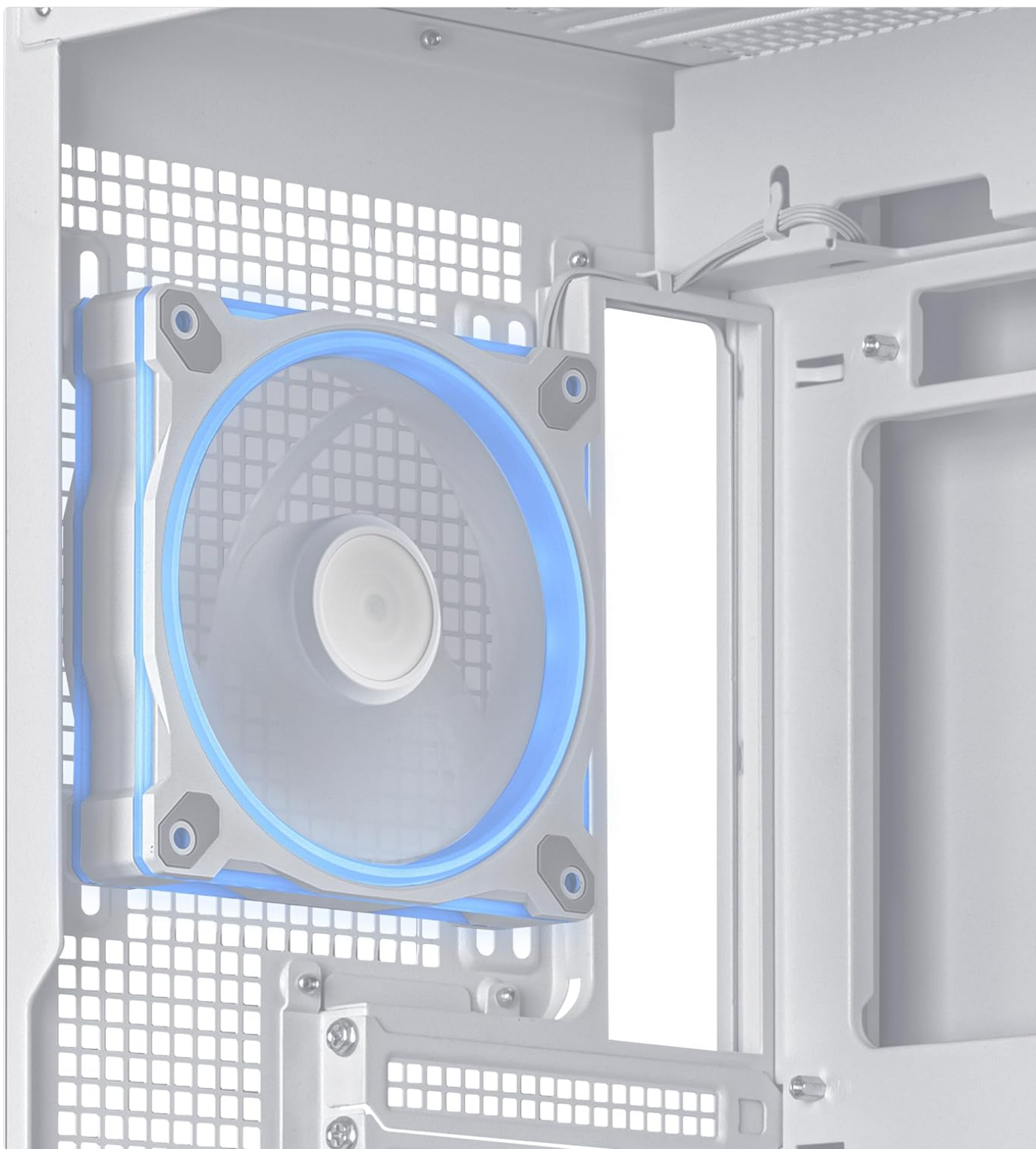


Figure 10: A close-up view of one of the pre-installed ARGB fans within the ASUS A31 Plus case, demonstrating the fan's design and illumination, relevant for cleaning and maintenance.

TROUBLESHOOTING

This section addresses common issues you might encounter with your PC case.

Problem	Possible Cause	Solution
Front I/O ports not working	Cables not properly connected to motherboard headers.	Verify all front I/O cables (USB, audio, power/reset) are securely connected to the correct headers on your motherboard. Refer to your motherboard manual.

Problem	Possible Cause	Solution
ARGB fans not lighting up or spinning	ARGB/fan cables disconnected or incorrect connection.	Ensure the fan power cables are connected to appropriate fan headers on the motherboard or fan controller. Verify ARGB cables are connected to a compatible 3-pin 5V ARGB header. Check software control for lighting.
Poor airflow or high temperatures	Dust accumulation; improper fan orientation; poor cable management.	Clean dust filters and internal components. Ensure fans are oriented correctly for intake/exhaust. Improve cable management to reduce airflow obstruction.

SPECIFICATIONS

Detailed technical specifications for the ASUS A31 Plus White ATX Case.

- Model Name:** ASUS A31 PLUS WHITE
- Case Type:** Mid Tower
- Color:** WHITE
- Motherboard Support:** ATX (with hidden connector support)
- Graphics Card Length:** Up to 380mm
- Radiator Support:** Up to 360mm (top clearance for 80mm thick fans)
- CPU Cooler Height:** Up to 165mm
- Pre-installed Fans:** Four ARGB fans
- Cable Management Space:** 34mm wide
- Front I/O Ports:** USB 3.0 (x2), USB Type-C (x1), Audio (x1), Power Button
- Dimensions (LxWxH):** 20 x 17.1 x 9.4 inches (Product Dimensions)
- Item Weight:** 18 pounds
- Special Features:** Pillar-free dual-sided tempered glass, 8° angled base for improved airflow.

WARRANTY AND SUPPORT

For warranty information and technical support, please refer to the official ASUS website or contact ASUS customer service. Keep your proof of purchase for warranty claims.
ASUS Official Website: www.asus.com

A31PLUS-WH

Asus A31 Plus White ATX Gaming Chassis

Specifications are subject to change without notice. Images may differ from actual product. EOE. View full specifications price at <https://www.comx-computers.co.za> **Asus A31 Plus White ATX Gaming Chassis**



[\[pdf\]](#) Specifications

A31PLUS WH specifications ComX Computers ComputersAsus A31 Plus White ATX Gaming Chassis Specifications are subject to change without notice Images may differ from actual product EOEwww x co za view 321440 |||

A31PLUS-WH **Asus A31 Plus White** ATX Gaming Chassis Specifications are subject to change without notice. Images may differ from actual product. EOE. View full specifications price at <https://www.comx-computers.co.za> **Asus A31 Plus White** ATX Gaming Chassis ...

lang: **score:19** filesize: 449.42 K page_count: 1 document date: 2025-08-18