

FORIOUS MM0035BN

FORIOUS Kitchen Faucet with Pull Down Sprayer

Model: MM0035BN

PRODUCT OVERVIEW

The FORIOUS Kitchen Faucet is designed for durability and convenience, featuring a pull-down sprayer and multiple spray functions. Constructed from high-grade stainless steel, it offers excellent corrosion and rust resistance. This faucet is certified lead-free, ensuring safe and healthy water usage.

- **Durable Construction:** High-grade stainless steel with anti-corrosion and anti-rust treatment.
- **Certified Safe:** US-Canada cUPC certified, lead-free, with a removable and easy-to-clean bubbler.
- **Water Efficiency:** Saves up to 20% water at 1.8 GPM at 60 PSI.
- **Flexible Hose:** High-temperature-resistant food-grade PEX super braided nylon hose prevents leaks and bursts.

SETUP AND INSTALLATION

This faucet is designed for easy installation, compatible with both 1-hole and 3-hole sink configurations. All necessary components and instructions are included for a straightforward DIY setup.

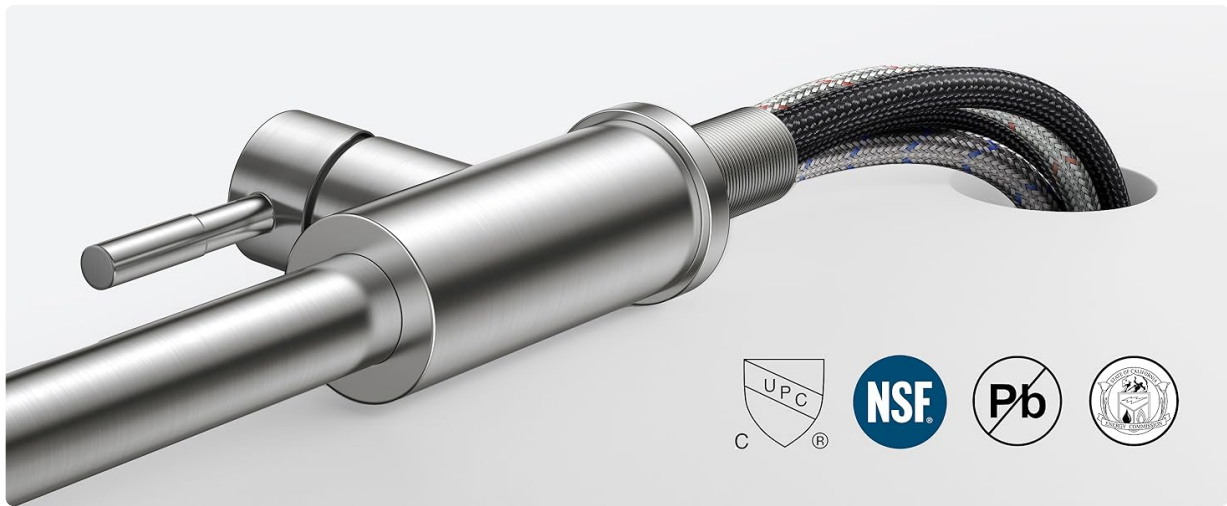


Figure 1: Faucet installation showing the braided hose being fed through the sink opening. The braiding enhances flexibility and durability, simplifying the installation process.

Installation Steps:

1. Ensure all included components are present: aerator, deck plate, handle, installation hardware, and instruction manual.
2. For 3-hole installations, use the provided deck plate. For 1-hole installations, the deck plate is optional.
3. Insert the faucet base and hoses through the sink hole.
4. Secure the faucet from underneath the sink using the O-shaped locknut for a stable fit.
5. Connect the hot and cold water supply lines to the corresponding faucet hoses.
6. Attach the pull-down sprayer hose to the main water line connection.
7. Test for leaks and ensure proper water flow.



Figure 2: The O-shaped nut installation (left) provides a fully enclosed locknut for secure, wobble-free faucet mounting, suitable for all countertop sinks. The U-shaped nut installation (right) is less secure and can lead to wobbling.

OPERATING INSTRUCTIONS

The FORIOUS kitchen faucet features a single handle for temperature and flow control, along with a pull-down sprayer offering three distinct spray modes.

Water Flow and Temperature Control:

- The single handle controls both water flow and temperature.

- Lift the handle to increase water flow.
- Move the handle left for hot water and right for cold water.

Pull-Down Sprayer and Spray Modes:

The pull-down sprayer extends for increased reach and offers three spray settings:

- **Waterfall Mode:** Provides a wide, gentle flow, ideal for rinsing fruits and vegetables or delicate cleaning tasks.
- **Stream Mode:** Delivers a steady, aerated stream for everyday tasks like filling pots and general washing.
- **Sweep Mode:** Offers a powerful blade of water for efficient cleaning of the sink and tackling stubborn dirt or residue.



Figure 3: The faucet demonstrating its three spray modes: Waterfall for gentle rinsing, Stream for filling, and Sweep for powerful cleaning.

The sprayer head retracts automatically back into the spout after each use. The unique waterfall flow design provides a wider outlet surface, reducing splashes and keeping the kitchen area tidy.

Figure 4: Innovative design allows rotating the sprayer 90 degrees to switch between water modes without needing to pull out the sprayer head.

MAINTENANCE

Regular maintenance ensures the longevity and optimal performance of your FORIOUS kitchen faucet.

- **Cleaning the Faucet:** Use a soft cloth and mild soap to clean the exterior. Avoid abrasive cleaners, steel wool, or harsh chemicals, as these can damage the finish.
- **Cleaning the Bubbler/Aerator:** The bubbler is removable and easy to clean. Periodically unscrew the aerator from the sprayer head and rinse any mineral deposits or debris under running water. Reattach securely.
- **Drip-Free Performance:** The faucet features a drip-free ceramic cartridge designed for long-lasting performance (up to 5 million uses). If drips occur, contact customer support for assistance.



Figure 5: Internal view highlighting the drip-free ceramic cartridge, designed for durability and reliable performance.

TROUBLESHOOTING

If you encounter any issues with your faucet, refer to the following common troubleshooting steps:

- **Low Water Flow:**

- Check if the water supply valves under the sink are fully open.
- Clean the aerator for any mineral buildup or debris.
- Ensure there are no kinks in the water supply lines.

- **Leaks from Faucet Base:**

- Ensure the mounting nut under the sink is securely tightened.
- Check the connections of the water supply lines for tightness.

- **Sprayer Not Retracting Properly:**

- Check if the weight on the pull-down hose is positioned correctly and not obstructed.
- Ensure the hose moves freely under the sink without kinks or obstructions.

- **No Water Coming Out:**

- Verify that the main water supply to your home is on.
- Check if the hot and cold water supply valves to the faucet are open.

If the issue persists after attempting these steps, please contact FORIOUS customer support.

SPECIFICATIONS

Feature	Detail
Model Number	MM0035BN
Colour	Stainless Steel
Style	Modern

Feature	Detail
Finish	Stainless Steel
Material	Stainless Steel
Installation Method	Single Hole or Three Hole
Flow Rate	1.8 Gallons Per Minute
Number of Holes	1
Spout Height	6.69 Inches
Spout Reach	7.9 Inches
Number of Handles	1
Mounting Type	Deck Mount
Special Features	360 Swivel, Dual Function Sprayer, Easy to Install, Lead Free, Pull Down Sprayer
Product Dimensions	20.07 x 26.01 x 33.02 cm; 1.63 kg
Certifications	cUPC, NSF+ANSI+CAN 61, Lead Free



Figure 6: Product dimensions and installation hole configurations (single-hole and three-hole).



Figure 7: Authority certifications including cUPC, NSF+ANSI+CAN 61, and Lead Free, ensuring product safety and quality.

WARRANTY AND SUPPORT

FORIOUS provides a lifetime parts replacement warranty for this kitchen faucet. This warranty covers manufacturing defects and ensures long-term reliability.

For warranty claims, technical assistance, or any questions regarding your FORIOUS kitchen faucet, please contact our customer support team:

- **Customer Support:** Refer to the contact information provided in your product packaging or visit the official FORIOUS website.
- **Online Resources:** Additional support and FAQs may be available on the [FORIOUS Store on Amazon](#).

© 2024 FORIOUS. All rights reserved.

This manual is for informational purposes only. FORIOUS reserves the right to make changes to products without prior notice.