

Manuals+

[Q & A](#) | [Deep Search](#) | [Upload](#)

Manuals.plus /

› [HOWHY](#) /

› HOWHY 90° Rotating Table Hinges Instruction Manual

HOWHY HY-XXFXK-lif

HOWHY 90° Rotating Table Hinges Instruction Manual

Brand: HOWHY | Model: HY-XXFXK-lif

INTRODUCTION

This instruction manual provides detailed guidance for the installation, operation, and maintenance of your HOWHY 90° Rotating Table Hinges. This hardware is designed for DIY assembly of L-shaped cabinets and tables, enabling a 90-degree rotation for flexible space utilization and organization. It is ideal for creating multifunctional furniture such as desks, computer tables, sofa side tables, and dining tables with extended or foldable desktops.

INCLUDED COMPONENTS

Please verify that all components listed below are present in your package before beginning installation:

- 1 × Swivel Hardware Hinge (Left-opening)
- 4 × Plastic Universal Wheels
- 2 × 1.5-inch Universal Wheels
- 2 × Directional Wheels
- Screws (various sizes for hinge and wheel attachment)
- Instruction Manual (this document)

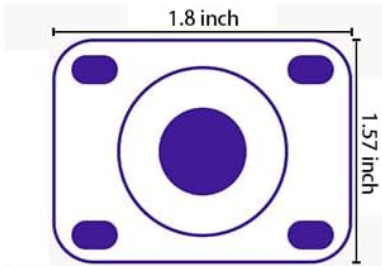


Image: All components included in the package, showing the hinge, various wheels, and screws.

PRODUCT SPECIFICATIONS

Feature	Detail
Material	Aluminum
Product Dimensions	3.7"L x 1.8"W (Hinge)
Finish Type	Powder Coated
Mounting Type	Face Mount
Hole Count	2 (on hinge plates)
Weight Limit (with 1.5-inch universal wheels)	90 lbs
Weight Limit (with plastic universal wheels)	50 lbs

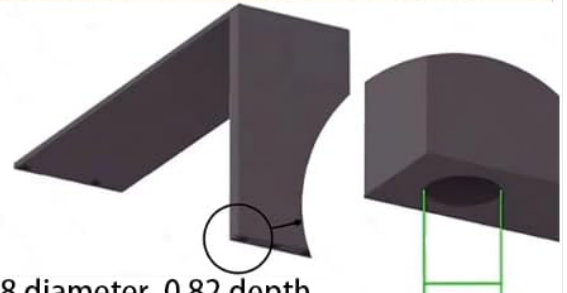
Item Weight	1.1 pounds
Model Number	HY-XXFXK-lif
Color	Black (Hinge), various for wheels



Minimum cabinet width of 1.57",
needs to be 1.37" off the ground



Load-bearing 90lb



Four 1.18 diameter, 0.82 depth
round holes in the bottom of the cabinet



Minimum cabinet width of 2",
needs to be 0.35" off the ground

Load-bearing 50lb

Image: Detailed measurements of the hinge and a list of included parts with their quantities.

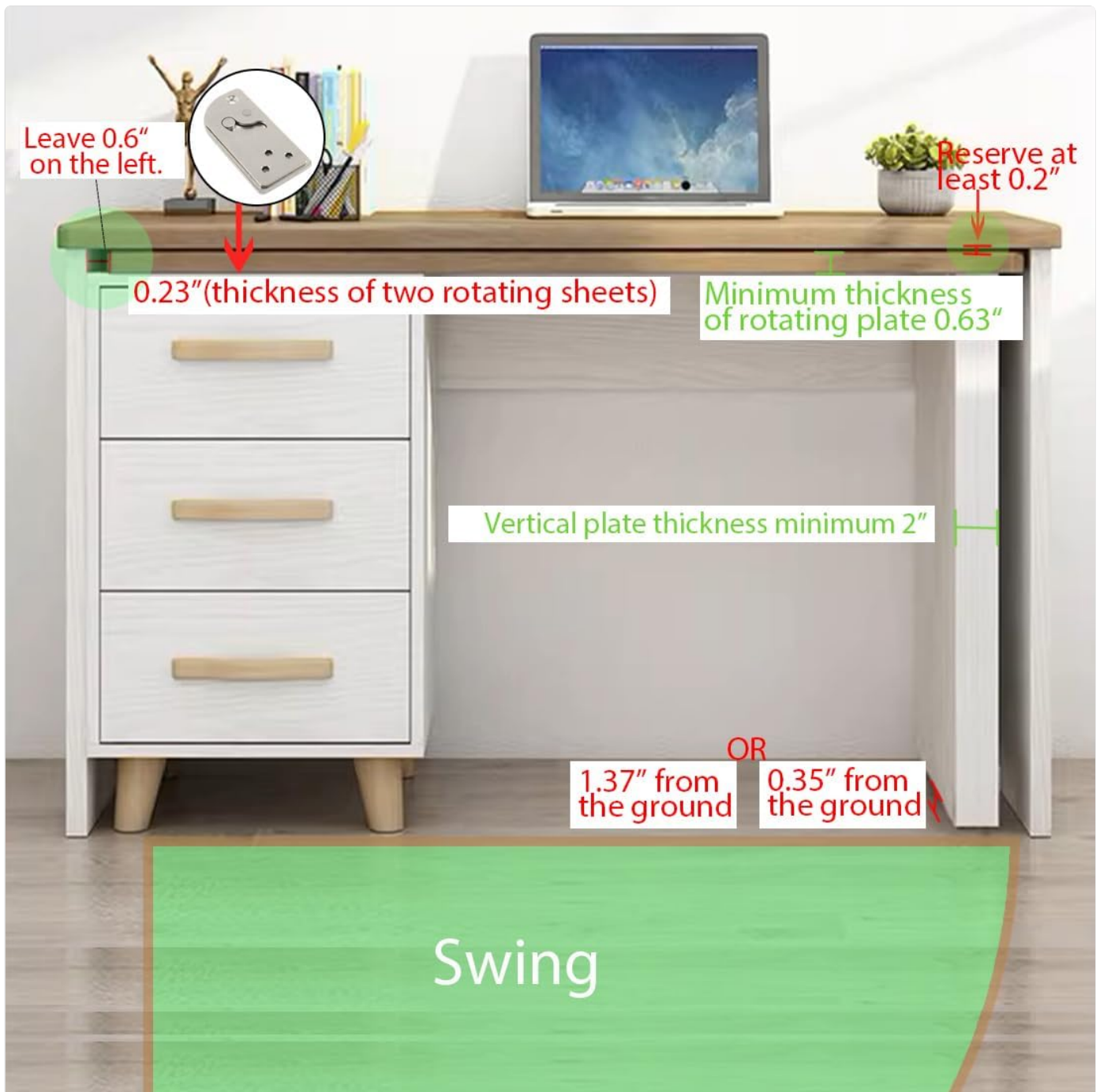


Image: Illustration of load-bearing capacities for different wheel types and minimum cabinet width requirements.

SETUP AND INSTALLATION

This section outlines the steps for installing the HOWHY 90° Rotating Table Hinges. Ensure you have the necessary tools (e.g., drill, screwdriver, measuring tape) and follow all safety precautions.

Preparation:

- Identify the desired location for the rotating table extension.
- Ensure the furniture piece (cabinet or desk) meets the minimum size requirements:
 - Minimum cabinet width for 1.5-inch universal wheels: 1.57 inches, with 1.37 inches clearance off the ground.
 - Minimum cabinet width for plastic universal wheels: 2 inches, with 0.35 inches clearance off the ground.
 - Minimum thickness of rotating plate: 0.63 inches.
 - Vertical plate thickness minimum: 2 inches.
 - Reserve at least 0.2 inches space on the right side of the rotating plate.

- Leave 0.6 inches space on the left side of the cabinet for the hinge.
- Mark the precise drilling points for the hinge and wheels.



Image: Diagram showing critical measurements and clearances required for proper hinge and table installation.

Installation Steps:

1. Install the Swivel Hardware Hinge:

Position the swivel hinge on the designated surface of your furniture. Ensure it is aligned correctly for a left-opening rotation (for model HY-XXFXK-lif). Mark the screw holes. Drill pilot holes if necessary, then secure the hinge using the provided screws.

Swivel Table Hinges

90° swivel, left-right swivel optional
Extra room for expansion
SMALL WHIRLWIND ROTATING
TABLE ACCESSORIES



Image: Visual guide for installing the swivel hardware hinge, showing placement and screw points.

2. Prepare the Rotating Table/Panel:

Attach the other half of the swivel hinge to the rotating table or panel. Ensure the alignment is precise to allow for smooth 90-degree rotation. Secure with screws.

3. Install the Wheels:

Depending on your furniture design and desired load capacity, install either the 1.5-inch universal wheels or the plastic universal wheels on the bottom of the movable table/cabinet. For the plastic universal wheels, ensure four 1.18-inch diameter, 0.82-inch deep round holes are prepared in the bottom of the cabinet. For directional wheels, ensure they are oriented to support the intended movement path.

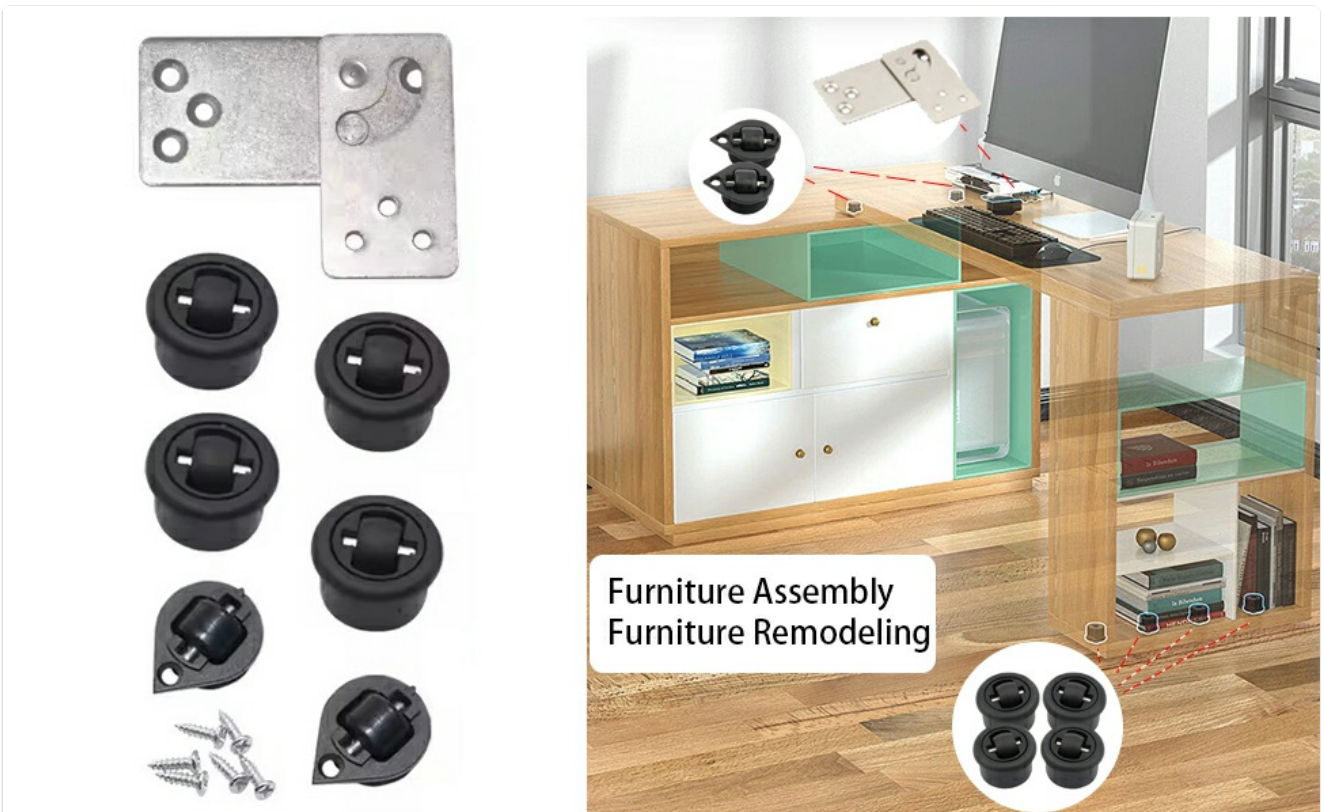


Image: Detailed steps for installing the directional and universal wheels, including hole preparation.

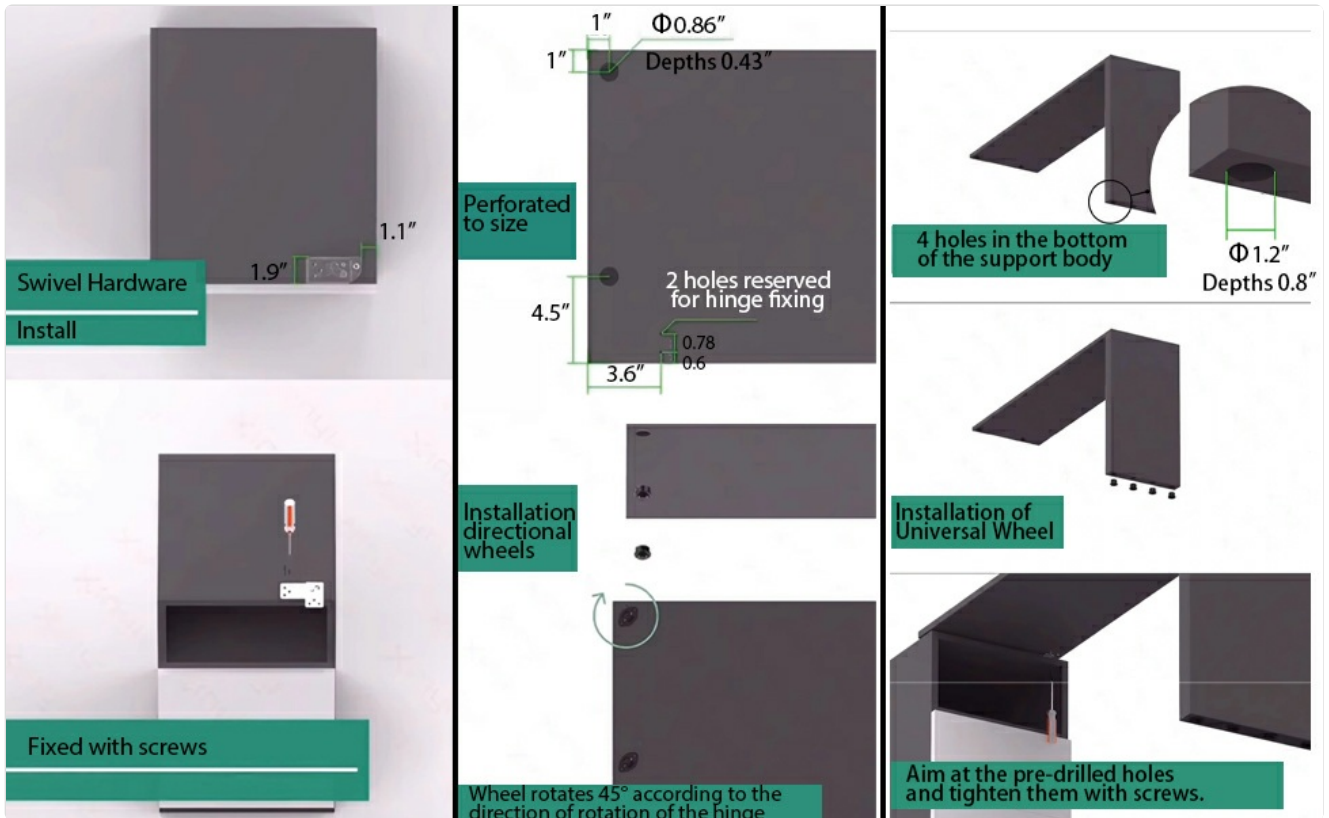


Image: Illustration of securing the wheels and ensuring proper alignment for the rotating mechanism.

4. Test Movement:

Once all components are securely fastened, gently test the rotation of the table to ensure smooth movement and proper alignment. Adjust screws if any resistance or misalignment is observed.

OPERATING INSTRUCTIONS

The HOWHY 90° Rotating Table Hinges allow for easy transformation of your furniture to adapt to various needs and optimize space. The left-opening design (for model HY-XXFXK-lif) facilitates a counter-clockwise rotation from its closed position.

How to Rotate the Table:

- To Extend:** Gently pull the movable table/cabinet outwards from its closed position. The hinge mechanism will guide the table as it rotates 90 degrees to form an L-shape with the main furniture piece.
- To Retract:** Push the movable table/cabinet back towards the main furniture piece. The hinge will guide it smoothly back into its compact, closed position.

The integrated wheels ensure smooth and effortless movement across various floor surfaces. Always ensure the path is clear before rotating the table.

Your browser does not support the video tag.

Video: Demonstration of the HOWHY swivel table hinges in action, showing how a desk can be extended and retracted to save space.

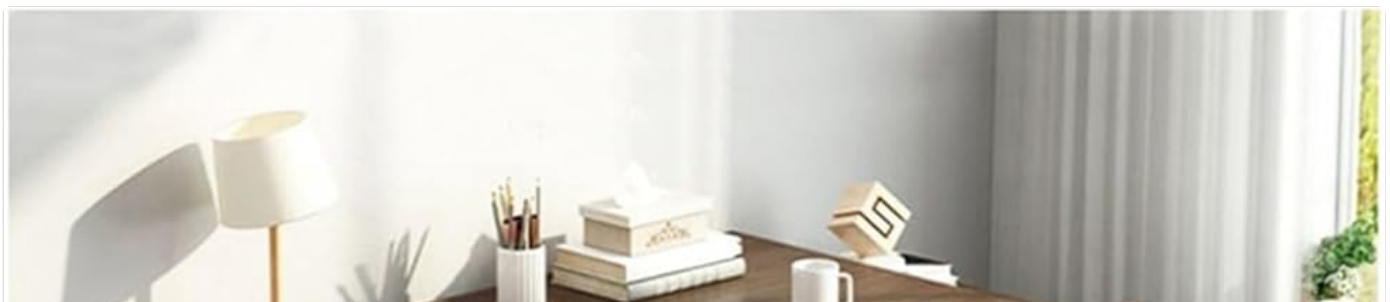




Image: Various examples of L-shaped furniture configurations made possible by the rotating hinges, including office desks and study desks.

MAINTENANCE

Proper maintenance will ensure the longevity and smooth operation of your HOWHY Rotating Table Hinges.

- **Cleaning:** Wipe the hinge and wheel components periodically with a soft, damp cloth to remove dust and debris. Avoid abrasive cleaners or harsh chemicals that could damage the finish.
- **Lubrication:** If the hinge mechanism or wheels begin to feel stiff or noisy, apply a small amount of silicone-based lubricant to the moving parts. Do not over-lubricate.
- **Fastener Check:** Periodically check all screws and fasteners to ensure they remain tight. Re-tighten if necessary to prevent wobbling or instability.
- **Wheel Inspection:** Inspect the wheels for any signs of wear or damage. Replace severely worn wheels to maintain smooth movement and prevent floor damage.

TROUBLESHOOTING

If you encounter issues with your HOWHY Rotating Table Hinges, refer to the following common problems and solutions:

- **Table is difficult to rotate or feels stiff:**
 - Check for obstructions in the path of rotation.
 - Ensure all screws are not overtightened, which can impede movement.
 - Apply a small amount of lubricant to the hinge mechanism and wheel axles.
 - Verify that the furniture dimensions meet the minimum requirements for smooth operation (refer to "Setup and Installation").
- **Table wobbles or is unstable:**
 - Ensure all screws securing the hinge and wheels are tightly fastened.
 - Verify that the furniture structure itself is stable and level.
 - Check if the weight on the table exceeds the specified load limit (90 lbs for 1.5-inch wheels, 50 lbs for plastic wheels).
- **Wheels are not rolling smoothly or are noisy:**
 - Clean any hair, dust, or debris from around the wheel axles.
 - Apply lubricant to the wheel axles.
 - Inspect wheels for damage or excessive wear; replace if necessary.
- **Table does not align correctly when extended or retracted:**
 - Re-check the hinge installation for proper alignment. Slight adjustments to screw tightness or hinge position may be needed.
 - Ensure the furniture pieces are level and on an even surface.

WARRANTY INFORMATION

Specific warranty details for HOWHY products are typically provided at the point of purchase or can be found on the official HOWHY website. Please retain your proof of purchase for any warranty claims. The manufacturer warrants this product against defects in materials and workmanship under normal use and service.

CUSTOMER SUPPORT

For further assistance, technical support, or inquiries regarding your HOWHY 90° Rotating Table Hinges, please contact HOWHY customer service. You can typically find contact information on the product packaging or the official HOWHY website.

Visit the HOWHY Store: [HOWHY DIY Furniture Hardware](#)

