

Vanxse VS-NXS612

Vanxse VS-NXS612 2K 4MP PoE AI Box Bullet IP Security Camera User Manual

Model: VS-NXS612

1. INTRODUCTION

This manual provides detailed instructions for the installation, operation, and maintenance of your Vanxse VS-NXS612 2K 4MP PoE AI Box Bullet IP Security Camera. This camera features 4-megapixel resolution, a 6-12mm varifocal lens, Power over Ethernet (PoE) capability, and advanced AI functions for human and vehicle detection. Please read this manual thoroughly before using the product to ensure proper setup and functionality.

2. PRODUCT OVERVIEW

Key Features:

- **2K 4MP Ultra HD Resolution:** Provides clear 2304x1296 resolution for detailed surveillance.
- **6-12mm F1.6 Varifocal Lens:** Allows for adjustable wide-angle to long-distance viewing.
- **Power over Ethernet (PoE):** Simplifies installation by transmitting power and data through a single Ethernet cable.
- **Advanced AI Detection:** Supports human and vehicle motion detection, face record, and alerts.
- **Multi-platform Remote Access:** View live feeds and recordings via mobile app (Xmeye), PC client, or web browser.
- **Compatible with NVRs:** Works with multiple 4K PoE NVRs.

What's in the Box:

- 1x Vanxse VS-NXS612 Network Box Camera with 6-12mm Lens
- 1x USB Disk (contains CMS software and user manual)



Figure 2.1: Front view of the Vanxse VS-NXS612 camera with its varifocal lens.

A promotional graphic for the security camera. On the left is a smaller version of the camera from Figure 2.1. The background is a blurred cityscape at night. The text 'Security Camera' is in large white font. Below it, '2K 4MP H.264 AI Box Network IP Camera' is in white text on a blue background. Underneath that, '1/1.8" F1.6 Industrial 6-12mm Varifocal Lens' is in white. At the bottom right, there are five icons in blue boxes: a person for 'Human detection', a car for 'Vehicle Detection', a running person for 'Motion Detection', a lightning bolt for 'PoE', and a monitor with '2K' for '2K 4MP Resolution'.

Figure 2.2: Overview of the camera's main features including human/vehicle detection, motion detection, PoE, and 2K 4MP resolution.

3. SETUP

3.1 Physical Installation

The camera supports various mounting options including hoisting, wall mounting, and vertical mounting. The bracket hole installation block can be repositioned on the front or bottom of the camera for flexibility.



Figure 3.1: Camera dimensions for planning installation space.



Bracket hole installation

Multiple designs, hoisting, wall mounting, vertical mounting, this mounting block can be repositioned on the front or bottom.



Can also be installed on both sides



1/1.8" F1.6
6-12mm IR Varifocal Lens



Interface connection

DC 48V PoE Ethernet Port
Spare DC12V Power Input

Figure 3.2: Details on bracket installation and interface connections, including the DC 48V PoE Ethernet port and spare DC12V power input.

3.2 Power and Network Connection (PoE Plug and Play)

This camera supports Power over Ethernet (PoE), allowing both power and data transmission through a single Ethernet cable. This simplifies installation, especially in locations without a nearby power outlet. Connect the camera to a PoE NVR, PoE switch, or a router with a PoE injector.



Figure 3.3: Connection diagrams illustrating how to connect the camera with a PoE NVR, PoE switch, or a standard router.

3.3 Mobile App Connection

For remote viewing and management, download the 'Xmeye' mobile application (or 'Linklemo' as shown in some diagrams) on your iPhone or Android smartphone. Follow the in-app instructions to register an account and add your camera.

1. Download the 'Xmeye' or 'Linklemo' app from the App Store or Google Play.
2. Open the app, register an account, and log in.
3. Add devices by connecting the camera to your NVR or switch first.
4. Successfully add the camera to enjoy live video.



Figure 3.4: Step-by-step guide for connecting the camera to the mobile application.

Download Linklemo for iOS: [App Store](#)

Download Linklemo for Android: [Google Play](#)

3.4 PC Client and Web Browser Access

The camera can also be accessed via a PC client (CMS software provided on the USB disk) or through a web browser (e.g., IE, Chrome, Firefox) by typing www.star4live.com. The CMS software allows for managing multiple cameras in one place.



Figure 3.5: Remote access options including mobile app, PC client, and web browser.

4. OPERATING INSTRUCTIONS

4.1 Adjusting Zoom and Focus

The camera features a 6-12mm varifocal lens, allowing you to manually adjust the zoom and focus to suit different installation positions and viewing requirements. This adjustment is done directly on the lens barrel.



Figure 4.1: Close-up view of the 6-12mm varifocal lens, showing adjustment rings for wide/tele and near/far focus.

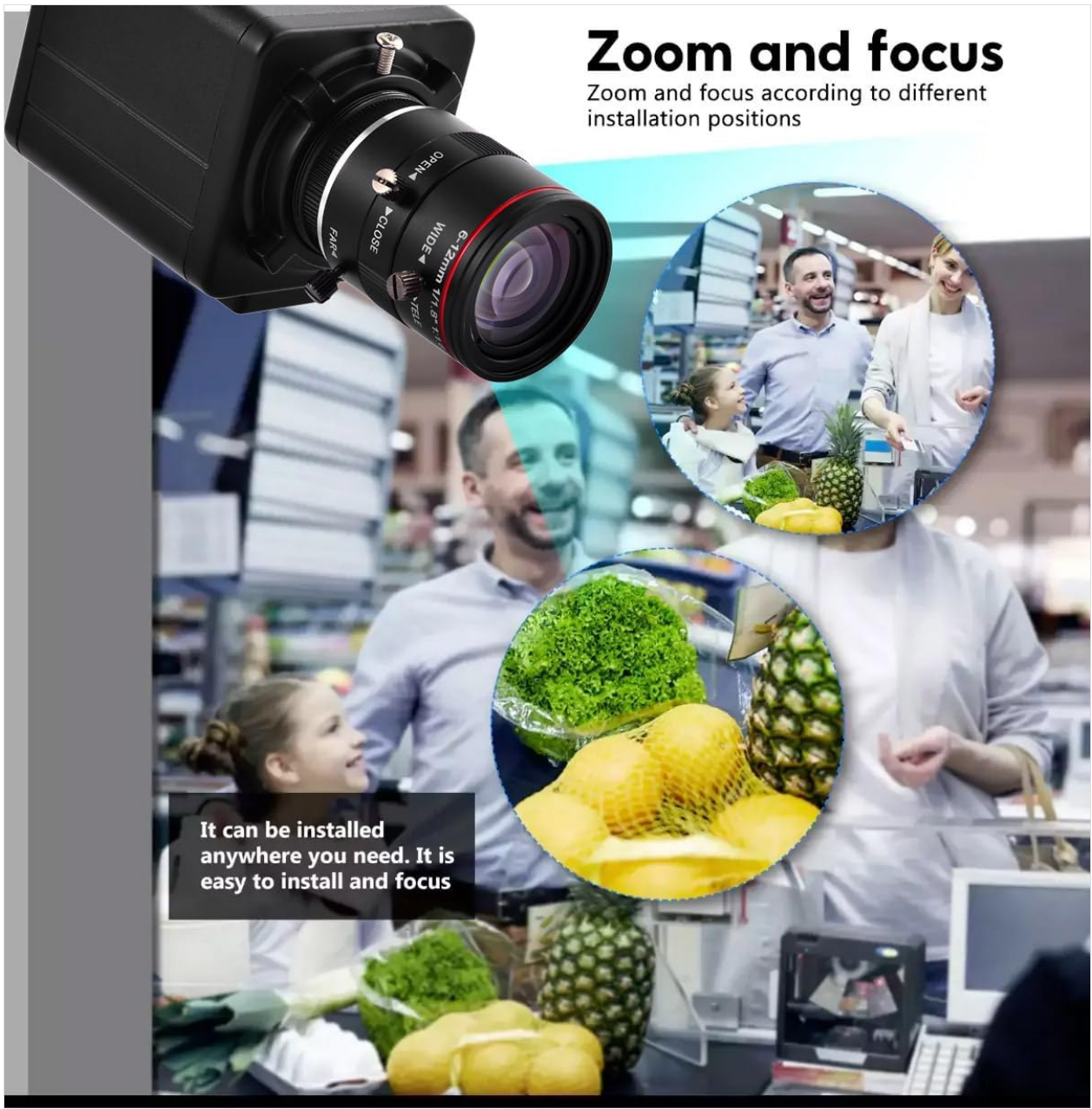


Figure 4.2: Illustrates how zoom and focus can be adjusted for different surveillance needs.

4.2 AI Human and Vehicle Motion Detection

The camera's advanced AI technology supports human and vehicle motion detection. When human or vehicle movements are detected, they are marked on the screen, and the camera sends alerts to your phone or mailbox. This feature helps reduce false alarms from non-relevant movements.



Figure 4.3: Example of a human detection alert displayed on a mobile phone, highlighting the detected human in a red box.

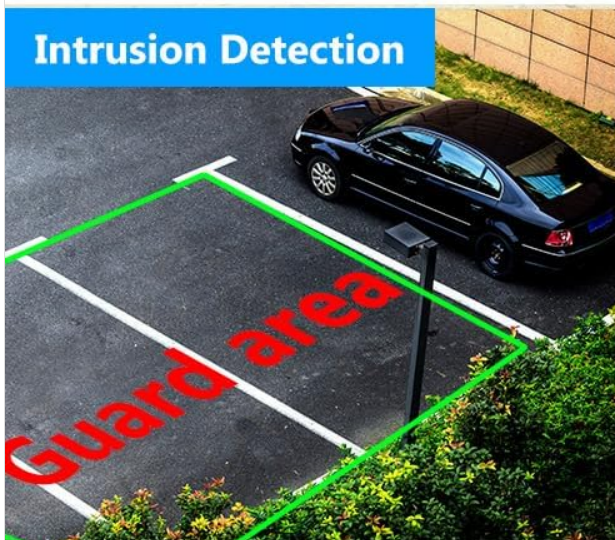


Figure 4.4: Visual examples of human detection, intrusion detection (guard area), and line crossing detection.

4.3 Face Record and Playback

The camera supports face record functionality, allowing it to detect and record faces. This feature can be used for later playback and identification.

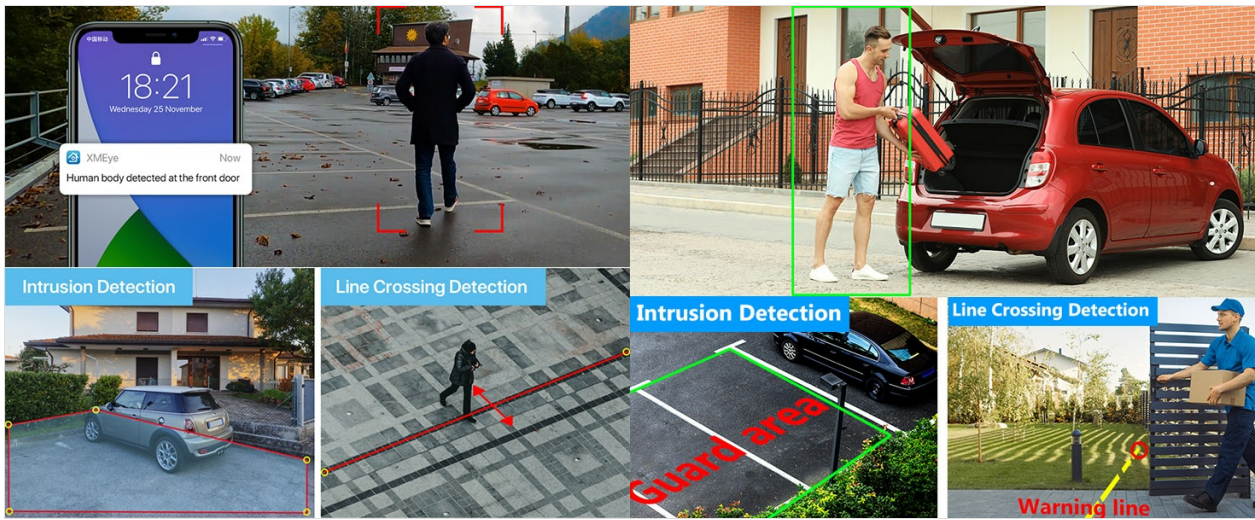


Figure 4.5: Demonstrates face detection and the ability to playback recorded video segments based on detected faces.

5. MAINTENANCE

Regular maintenance ensures optimal performance and longevity of your security camera.

- **Lens Cleaning:** Gently clean the camera lens with a soft, lint-free cloth. For stubborn dirt, use a lens cleaning solution designed for optical surfaces. Avoid abrasive materials that could scratch the lens.
- **Housing Cleaning:** Wipe the camera housing with a damp cloth. Do not use harsh chemicals or solvents.
- **Firmware Updates:** Periodically check the manufacturer's website or app for available firmware updates. Keeping the firmware updated can improve performance, add new features, and enhance security.
- **Cable Inspection:** Regularly inspect all cables for any signs of wear, damage, or loose connections. Ensure all connections are secure.
- **Environmental Protection:** While rated for indoor/outdoor use, ensure the camera is installed in a location that minimizes direct exposure to extreme weather conditions to prolong its lifespan.

6. TROUBLESHOOTING

If you encounter issues with your Vanxse VS-NXS612 camera, refer to the following common troubleshooting steps.

6.1 No Video Feed / Offline Camera

- **Check Power:** Ensure the camera is receiving power. If using PoE, verify the PoE NVR or switch is functioning correctly and the Ethernet cable is securely connected. If using a DC12V adapter, ensure it is plugged in and working.
- **Check Network Connection:** Confirm the Ethernet cable is properly connected to both the camera and the network device (NVR/switch/router). Test the cable if possible.
- **Network Configuration:** Verify the camera's IP address and network settings are correct and not conflicting with other devices on your network. Use the CMS software or ONVIF tools to check network parameters.
- **Reboot Devices:** Try restarting the camera, NVR/switch, and router.

6.2 Poor Image Quality / Unclear Video

- **Clean Lens:** Ensure the camera lens is clean and free from dust, smudges, or condensation.
- **Adjust Focus and Zoom:** Manually adjust the varifocal lens for optimal focus and desired zoom level.
- **Lighting Conditions:** Ensure adequate lighting in the surveillance area. The camera has WDR (Wide Dynamic Range) for challenging lighting, but extreme conditions can still affect quality.
- **Resolution Settings:** Check the video resolution settings in the app or CMS software to ensure it is set to 2K 4MP.

6.3 Motion Detection Not Working / False Alarms

- **Sensitivity Settings:** Adjust the motion detection sensitivity in the camera's settings via the app or CMS software.
- **Detection Zones:** Configure specific detection zones to exclude areas with constant, irrelevant movement (e.g., trees swaying).
- **AI Feature Activation:** Ensure human and vehicle detection features are enabled in the settings.

6.4 Video Lag / Delay

- **Network Bandwidth:** Check your network's bandwidth. Insufficient bandwidth can cause video lag, especially with high-resolution streams.
- **Network Congestion:** Reduce other network activities that might be consuming bandwidth.
- **NVR/Viewing Device Performance:** Ensure your NVR or viewing device has sufficient processing power to handle the 4MP video stream.
- **Firmware:** Ensure the camera firmware is up to date.

6.5 Web Interface Issues

- **Browser Compatibility:** Try accessing the web interface with different browsers (e.g., IE, Chrome, Firefox). Some interfaces may require specific browser plugins.
- **Plugin Installation:** If prompted, install any necessary browser plugins or drivers for the web interface to function correctly.
- **Network Access:** Ensure the camera has proper network access and is not blocked by firewalls.

7. SPECIFICATIONS

Model Number	VS-NXS612
Resolution	4 Megapixel (2304x1296)
Lens	1/1.8" F1.6 6-12mm Varifocal Lens
Connectivity	Ethernet, Wired, PoE
Special Features	6-12mm Varifocal Lens, Face Recognize, HD Resolution, Mini Size, Motion Sensor, Human/Vehicle Detection, WDR
Indoor/Outdoor Usage	Indoor, Outdoor
Compatible Devices	Desktop, Digital Video Recorder, Laptop, Smartphone, Tablet
Controller Type	Xmeye

Mount Type	Ceiling Mount/Wall Mount
Form Factor	Bullet
Alert Type	Motion Only
Effective Still Resolution	4 MP
Control Method	Remote
Wireless Technology	POE
Video Capture Resolution	1920p (Note: Product title states 2K 4MP, 1920p is 2MP. Please refer to product packaging for exact resolution.)
Power Source	Corded Electric/POE
Item Dimensions	4 x 1.8 x 1.8 inches
Video Capture Format	MPEG-4

8. WARRANTY AND SUPPORT

8.1 Warranty Information

Warranty details for the Vanxse VS-NXS612 camera are typically provided at the point of purchase or included with the product packaging. Please retain your proof of purchase for warranty claims. For specific warranty terms and conditions, refer to the documentation provided by your retailer or contact Vanxse customer support.

8.2 Customer Support

For technical assistance, troubleshooting, or any questions regarding your Vanxse security camera, please contact Vanxse customer support through their official website or the contact information provided in your product documentation. You may also find helpful resources and FAQs on the Vanxse brand store page on Amazon.