

PEMP PP-5663

PEMP Ultra-Thin 12.3" Android Screen User Manual

Model: PP-5663 | Brand: PEMP

1. INTRODUCTION

This user manual provides comprehensive instructions for the installation, operation, and maintenance of your PEMP Ultra-Thin 12.3" Android Screen. Designed for BMW X3 F25 NBT systems, this advanced display enhances your in-car experience with modern features like wireless CarPlay and Android Auto, powered by a Qualcomm Snapdragon 680 processor.

2. PRODUCT FEATURES

- **Ultra-Thin Design:** Features an 82.3% screen-to-body ratio and a 12.3" large Android display with a metal material shell and Non-Airgap process for realistic picture quality.
- **Seamless Smartphone Integration:** Supports wireless and wired CarPlay and Android Auto. Utilizes the original car microphone for clear calls without echo.
- **High Performance:** Powered by a Qualcomm Snapdragon 680 chip (6nm process, 8-core processor) running Android 13. Equipped with 8GB RAM and 128GB ROM (DDR4 Emmc UFS 2.2) for fast multitasking.
- **Camera Support:** Compatible with the OEM camera and PEMP AHD Reversing Camera (Asin: B08YWL8CND) & front camera, providing clear reversing images.
- **Advanced Connectivity:** Features a mobile phone-style SIM card holder for immediate 4G high-speed network access, along with 2.4G and 5.0G dual-band WiFi.



Figure 2.1: Front view of the PEMP Ultra-Thin 12.3" Android Screen.



Figure 2.2: Comparison of the car interior before and after installing the PEMP Android Screen.

Product Features

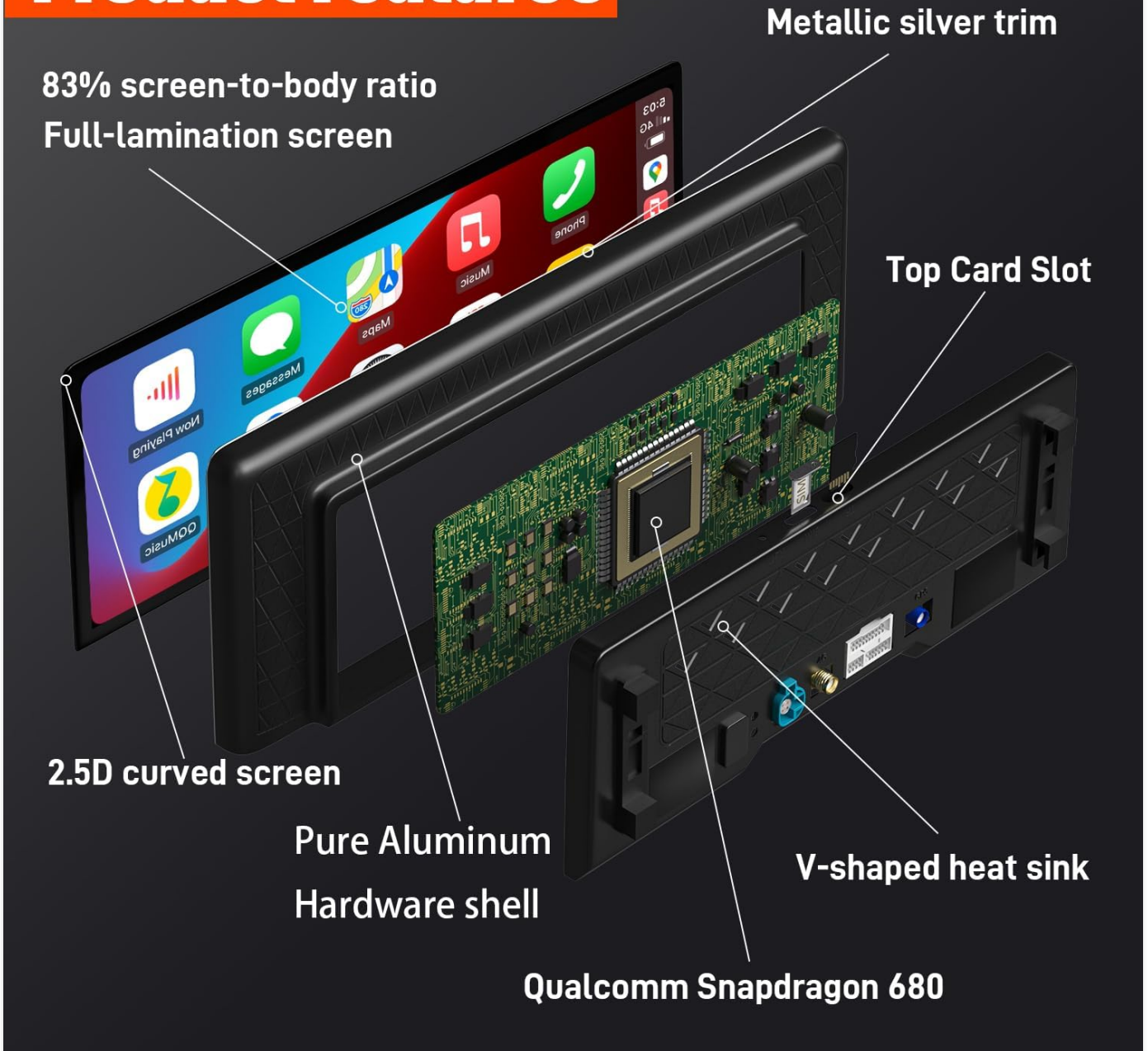


Figure 2.3: The screen supports both wireless and wired CarPlay and Android Auto for seamless smartphone integration.

Android 13 8G+128G

680
Qualcomm
Snapdragon

QUALCOMM SNAPDRAGON 680

50% increase in overall performance

Qualcomm Snapdragon 680

Qualcomm Snapdragon 662

Qualcomm Snapdragon 450

Chip Performance Comparison

Figure 2.4: Detailed view of product features including the ultra-thin design, full-lamination screen, and Qualcomm Snapdragon 680 processor.

offerings



Accessories



1 × ISO Wiring Harness



1 × LVDS Adapter Cable



1 × RCA Cable



1 × 4G Antenna



1 × GPS Antenna



1 × USB Cable



1 × Audio Cable

**Installation
manual**

**User
Manual**

1 × Installation manual

Figure 2.5: The powerful Qualcomm Snapdragon 680 chip ensures smooth performance with Android 13.



Figure 2.6: The ultra-thin screen design, with a panel thickness of only 13mm, blends seamlessly into your vehicle's interior.

USING THE ORIGINAL MIC

Step 1: Connect the MIC-IN male connector on the ISO harness to the MIC-IN female connector on the USB harness.

Step 2: Go to "Settings" - "Factory Settings" and enter the password "070305".

Step 3: Select "Vehicle" - "Switching between external and internal microphones" - "External microphone".

Figure 2.7: The full-lamination screen ensures no dust entry, wider viewing angles, and clearer colors, complemented by a 2.5D capacitive touch screen for a better visual effect.

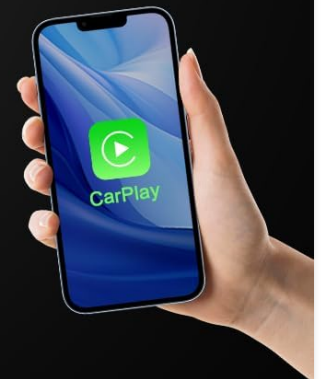
3. PACKAGE CONTENTS

Verify that all items listed below are included in your package:

- PEMP Ultra-Thin 12.3" Android Screen Device
- Power Cable
- User Manual
- OEM Camera (compatible)
- PEMP AHD Reversing Camera (compatible)
- ISO Wiring Harness
- LVDS Adapter Cable
- RCA Cable
- 4G Antenna
- GPS Antenna
- USB Cable
- Audio Cable
- Installation Manual

Wireless / Wired Android Auto

Connect your Android phone to your Android screen using Bluetooth



Wireless / Wired Carplay

Connect your iPhone to your Android screen using Bluetooth

Figure 3.1: All accessories included in the product package.

4. SETUP AND INSTALLATION GUIDE

Professional installation is recommended. Ensure the vehicle's power is off before beginning installation. Refer to the included Installation Manual for detailed, step-by-step instructions specific to your BMW X3 F25 NBT model.

4.1. Microphone Setup

To ensure high-quality calls using the OEM microphone with CarPlay and Android Auto, follow these steps:

1. Connect the MIC-IN male connector on the ISO harness to the MIC-IN female connector on the USB harness.
2. Go to "Settings" > "Factory Settings" and enter the password "070305".
3. Select "Vehicle" > "Switching between external and internal microphones" > "External microphone".



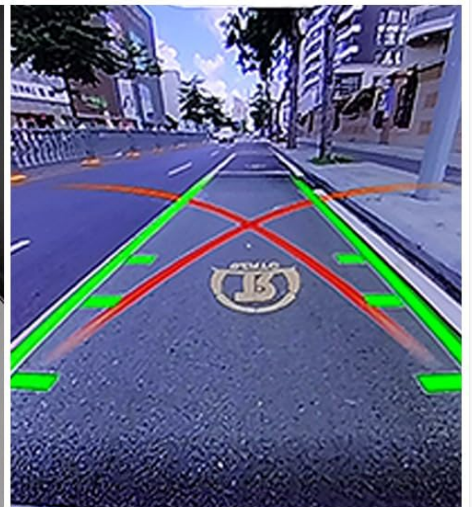
**Supports original automotive controls
with original microphone**



**Original Car
Directional Controls**



**Original car
iDriverotation control**



**Original car
reversing video**

Figure 4.1: The system supports original automotive controls, including the original microphone for calls.

Figure 4.2: Wiring diagram and system settings for using the original car microphone.

4.2. Optical Fiber Cable Connection

When connecting to the original car's main unit, take out the 2Pin green optical fiber cable from the original CD wire and connect it to the Android harness.



Figure 4.3: Connection of the optical fiber cable to the Android harness.

4.3. AUX Audio Connection

For some models where the AUX directly enters the audio amplifier, you must plug the audio cable (included in the package) into the AUX interface in the armrest box to get the Android sound.



Figure 4.4: AUX audio connection for models with direct amplifier input.

4.4. Gear Selection Setting

After installation, navigate to "Settings" > "Factory Settings" > "Vehicle" > "Gear Selection" and select the appropriate gear type for your vehicle.



Figure 4.5: Adjusting the Gear Selection in system settings.

4.5. Product Process Characteristics Video

Your browser does not support the video tag.

Video 4.1: A visual overview of the PEMP ultra-thin Android screen's manufacturing process and key characteristics, including its slim profile and full lamination.

5. OPERATING INSTRUCTIONS

Once installed, your PEMP Android Screen operates similarly to a standard Android tablet, with added automotive functionalities.

5.1. Basic Navigation

The touchscreen interface allows for intuitive navigation. Swipe left or right to access different home screens, and tap on app icons to launch them. The system supports various navigation apps available on the Google Play Store.

5.2. CarPlay and Android Auto

Connect your iPhone or Android phone via Bluetooth for wireless CarPlay or Android Auto. Alternatively, use a USB cable for a wired connection. Once connected, your phone's compatible apps will appear on the screen, allowing for navigation, music, calls, and messages.

5.3. 4G and WiFi Connectivity

Insert a SIM card into the dedicated slot for 4G mobile data access. Connect to available WiFi networks through the system settings for internet access and app updates.

5.4. Media Playback

Play music and videos from various sources, including internal storage, USB drives, or streaming services via internet connection. The system supports multiple audio and video formats.

6. CARE AND MAINTENANCE

To ensure the longevity and optimal performance of your PEMP Android Screen, follow these maintenance guidelines:

- **Cleaning:** Use a soft, lint-free cloth to clean the screen. For stubborn smudges, slightly dampen the cloth with water or a screen-safe cleaner. Avoid abrasive materials or harsh chemicals.
- **Temperature:** Avoid exposing the device to extreme temperatures, both hot and cold, for extended periods.
- **Power:** Always turn off the vehicle's ignition before disconnecting any cables or performing maintenance.
- **Software Updates:** Periodically check for and install software updates to ensure the system runs efficiently and securely.

7. TROUBLESHOOTING COMMON ISSUES

If you encounter issues with your device, refer to the following common troubleshooting steps:

Problem	Possible Cause	Solution
No power/Screen blank	Loose power connection, blown fuse, vehicle power issue.	Check all power cable connections. Verify vehicle's fuse box. Consult a professional installer.
No sound from Android system	Incorrect AUX connection, volume too low, system audio settings.	Ensure AUX cable is correctly plugged into the armrest box (if applicable). Check system volume and audio output settings.
CarPlay/Android Auto not connecting	Bluetooth/USB connection issue, phone settings, app compatibility.	Ensure Bluetooth is on and paired. Try a different USB cable. Restart phone and device. Check phone's CarPlay/Android Auto settings.
Poor microphone quality	Incorrect microphone setting, loose connection.	Verify microphone settings in Factory Settings (Section 4.1). Check MIC-IN cable connection.
GPS signal weak/lost	GPS antenna placement, environmental interference.	Ensure GPS antenna is placed in an unobstructed location. Try moving the vehicle to an open area.

If the problem persists after attempting these solutions, please contact customer support for further assistance.

8. TECHNICAL SPECIFICATIONS

Specification	Detail
Model Number	PP-5663
Display Size	12.3 Inches
Operating System	Android 13
Processor	Qualcomm Snapdragon 680 (8-core, 6nm process)
RAM	8GB
ROM	128GB (DDR4 Emmc UFS 2.2)
Connectivity	4G, 2.4G/5.0G WiFi, Bluetooth
Special Features	Touchscreen, Android Auto, Bluetooth, CarPlay

Specification	Detail
Compatible Devices	Smartphone
Control Method	Touch
Product Dimensions	12.2 x 2 x 5.1 inches
Item Weight	5.98 pounds
Country of Origin	China

9. WARRANTY AND CUSTOMER SUPPORT

Your PEMP Ultra-Thin 12.3" Android Screen comes with a manufacturer's warranty. Please refer to the warranty card included in your package for specific terms and conditions, including warranty duration and coverage details.

For technical support, troubleshooting assistance, or warranty claims, please contact PEMP customer service through the contact information provided on the product packaging or the official PEMP website. When contacting support, please have your product model number (PP-5663) and purchase details ready.