

[Manuals.plus](#) /

> [Vaydeer](#) /

> Vaydeer Metal Time Lock Box (Black Small) - User Manual

Vaydeer Metal Time Lock Box

Vaydeer Metal Time Lock Box (Black Small)

User Manual

INTRODUCTION

The Vaydeer Metal Time Lock Box is designed to assist with self-control by securely locking away items for a set period. This device is ideal for managing screen time, controlling access to snacks, medicine, or other personal belongings. Its durable metal construction and user-friendly interface provide a reliable solution for enhancing discipline and focus.



Image: Top view of the Vaydeer Metal Time Lock Box, displaying the digital timer and control buttons.

PRODUCT FEATURES

- **Durable Metal Construction:** Made from high-grade metal for enhanced security and longevity.
- **Dual Power Options:** Operates with 4xAA batteries (not included) or via an external USB-C connection.
- **Emergency Unlocking Function:** Provides a self-service unlocking option in urgent situations via a dedicated website and code.
- **Charging Cable Hole:** Allows devices stored inside to be charged while the box remains locked.
- **Child Lock Button:** Prevents unintended operation or tampering by children.
- **Adjustable Timer:** Set locking durations from minutes up to 365 days.
- **Audio Prompt:** Provides audible feedback during locking and unlocking operations.
- **Clear LCD Display:** Shows battery status, child lock status, lid status, and remaining time.




Image: Detailed view of the LCD display, child lock button, and charging cable hole.

SETUP

1. Power Supply:

- For daily use, insert 4xAA batteries into the battery compartment located on the underside of the lid. Ensure correct polarity.
- Alternatively, the device can be powered via the external USB-C port. Connect a USB-C cable to the port on the back of the box. This port also serves as an emergency power source if batteries run out while locked.

2. **Initial Power On:** The LCD display will activate upon battery installation or USB-C connection.

3. **Familiarize with Controls:** Identify the 'Settings' button (gear icon), 'Up' arrow, 'Down' arrow, and 'Lock' button (padlock icon) on the top panel.



Image: Illustration of the two power supply options: internal AA batteries and external USB-C port.

OPERATING INSTRUCTIONS

1. Setting the Timer:

- Press the 'Settings' button (gear icon) to enter time setting mode.
- Use the 'Up' and 'Down' arrow buttons to adjust the desired locking duration in days, hours, and minutes. The maximum setting is 365 days.
- Press the 'Settings' button again to cycle through days, hours, and minutes for adjustment.

2. Locking the Box:

- Place the items you wish to lock inside the box.
- Close the lid securely.
- Press the 'Lock' button (padlock icon). The device will emit an audio prompt and begin a 1-minute countdown. During this minute, you can still open the box if needed.
- After the 1-minute countdown, the box will securely lock for the set duration. Once locked, the timer cannot be reduced. Only additional time can be added.

3. Child Lock Function:

- To activate the child lock, locate the small button on the back edge of the lid. Press and hold this button until the child lock icon appears on the LCD.
- When the child lock is active, the control buttons on the top panel will be disabled, preventing accidental changes to the timer or unlocking attempts.
- To deactivate, press and hold the child lock button again until the icon disappears.

4. Charging Devices While Locked:

- The box features a strategically placed hole on the side, covered by a rubber stopper.
- Remove the stopper and route a charging cable through this hole to charge devices stored inside the locked box.

5. Emergency Unlocking:

- In an emergency, if you need to unlock the box before the timer expires, you can use the emergency unlocking service.
- Refer to the provided "Emergency Unlocking Service Card" or visit www.vaydeer.com/unlock.
- Follow the on-screen prompts to obtain a device ID from your lock box and receive an unlocking code. Note that the first-time unlocking service is free, subsequent uses may incur a fee.

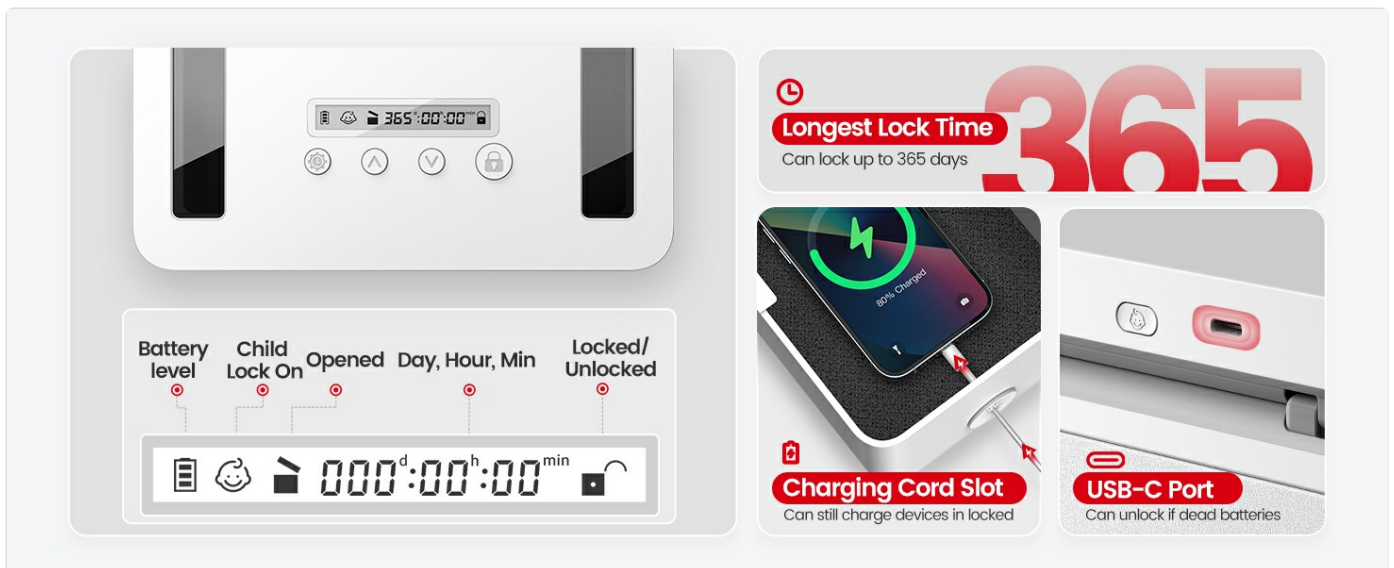


Image: Steps for setting the timer and locking the box.



Image: Emergency unlocking procedure using the device ID and online service.

MAINTENANCE

- **Cleaning:** Wipe the exterior with a soft, damp cloth. Avoid abrasive cleaners or solvents.
- **Battery Replacement:** Replace AA batteries when the low battery indicator appears on the LCD display to ensure continuous operation.
- **Storage:** Store the lock box in a dry, cool place when not in use.

TROUBLESHOOTING

Problem	Solution
Device does not power on.	Check if 4xAA batteries are correctly installed and charged, or connect the USB-C power cable.
Cannot open the box after setting the timer.	The box is designed to remain locked until the set timer expires. If urgent access is required, use the emergency unlocking function as described in the Operating Instructions.
Child lock is active, and buttons are unresponsive.	Press and hold the child lock button on the back edge of the lid to deactivate it.
Timer display is blank or flickering.	This may indicate low battery. Replace batteries or connect the USB-C power cable.

SPECIFICATIONS

- **Brand:** Vaydeer
- **Model:** Metal Time Lock Box
- **Color:** Black
- **Material:** Metal
- **Product Dimensions:** 3.15"L x 6.07"W x 8.35"H
- **Capacity:** 2.6 Liters
- **Item Weight:** 2.09 pounds (950 Grams)
- **Power Source:** 4xAA Batteries (not included) or USB-C
- **Maximum Lock Time:** 365 Days
- **Special Features:** Alarm System, Child Lock, Charging Cable Hole, Audio Prompt



Image: The lock box interior demonstrating its 2.6L capacity with various items.

WARRANTY AND SUPPORT

For customer support, including inquiries about the emergency unlocking service, please visit the official Vaydeer website:

www.vaydeer.com/unlock

The emergency unlocking service offers a free first-time unlock. Subsequent uses may be subject to a service fee. 24/7 online self-service is available.

