

CAMECHO 06e5b641-c5e6-4e17-8164-d7d4315e76a7

CAMECHO Android 13 Car Stereo Radio User Manual

FOR KIA SOUL 2014-2019 (MANUAL A/C)

Model: 06e5b641-c5e6-4e17-8164-d7d4315e76a7

Introduction

This manual provides detailed instructions for the installation, operation, and maintenance of your CAMECHO Android 13 Car Stereo Radio. Please read this manual thoroughly before using the product to ensure proper function and safety. This unit is designed for Kia Soul models from 2014 to 2019 with manual A/C (low-end version) and without Canbus.

Package Contents

Verify that all items listed below are included in your package:

- 1 x Android Head Unit
- 1 x AHD Backup Camera
- 1 x External Microphone
- 1 x GPS Antenna
- 2 x Power Cable
- 1 x RCA Cable
- 2 x USB Cable
- 1 x Rear Camera Input Cable
- 1 x Accessories (various small parts for installation)
- 1 x Instruction Manual

Equalizer Adjust

The built-in Preset EQ allows you to choose from preset EQ curves for a variety of music styles such as Rock or Pop



Mutiple UI Themes

Various stylish UI design for this multimedia system, you are able to switch the desktop themes freely to set a unique one you like.



Figure 1: All components included in the package. This includes the head unit, various cables, GPS antenna, microphone, backup camera, and installation tools.

Product Features

Your CAMECHO Android 13 Car Stereo Radio offers a range of advanced features to enhance your driving experience:

- **Android 13 System:** Customization Android 13 system, 9 inches 1024*600 HD 2.5D touch screen, 2GB RAM + 64GB ROM.
- **Wireless Apple CarPlay & Android Auto:** Built-in wireless CarPlay and Android Auto for map navigation, calls, email, music, messages, and other cell phone functions. Supports Siri/Google Assistant.
- **GPS Navigation & WiFi Connection:** Supports online or offline navigation with a built-in offline map app ("Here Wego"). Integrated WiFi module for internet access, online music, and app downloads (Google Maps, YouTube, Spotify, etc.).
- **AHD Backup Camera:** Includes a waterproof rear camera with wide viewing angle and night vision for high-definition reversing scenes.
- **Bluetooth & FM RDS Radio:** Built-in Bluetooth for hands-free calls and A2DP music streaming. FM/RDS radio with 18-station presets.

- **Entertainment & Control:** Compatible with original steering wheel control buttons, built-in Hi-Fi audio system, 1080P video playback, dual USB input, split screen, video output, Subwoofer output, audio output for amplifiers.

Installation Guide

1. Vehicle Compatibility

This head unit is specifically designed for Kia Soul models manufactured between 2014 and 2019 that feature manual A/C (low-end version) and do not have a Canbus system. Please ensure your vehicle matches these specifications before proceeding with installation.



Figure 2: Compatible car models (Manual A/C, without Canbus) and incompatible models (Auto A/C, Small A/C Panel, High-End Version with Navi Screen).

2. Reversing Camera Wiring

Properly connect the AHD backup camera for reverse viewing functionality. The reversing input must be plugged in even if the camera is not used.

1. Connect the camera's positive power wire to the positive pole of the car's reversing light.
2. Connect the camera's negative power wire to the negative pole of the car's reversing light.
3. The reversing trigger is controlled by the stereo unit; therefore, a separate connection for the trigger is not required.



Figure 3: Reversing camera wiring diagram. Ensure the white plug is connected to the main device for Bluetooth and WiFi signals.

3. Steering Wheel Control Setup

To configure your steering wheel controls:

1. After connecting the power cable, navigate to **Car Settings > General > SWC Type**
2. Choose "Learning Type".
3. Enter the SWC setting interface. Complete the steering wheel button learning process. If learning fails, repeat the steps.

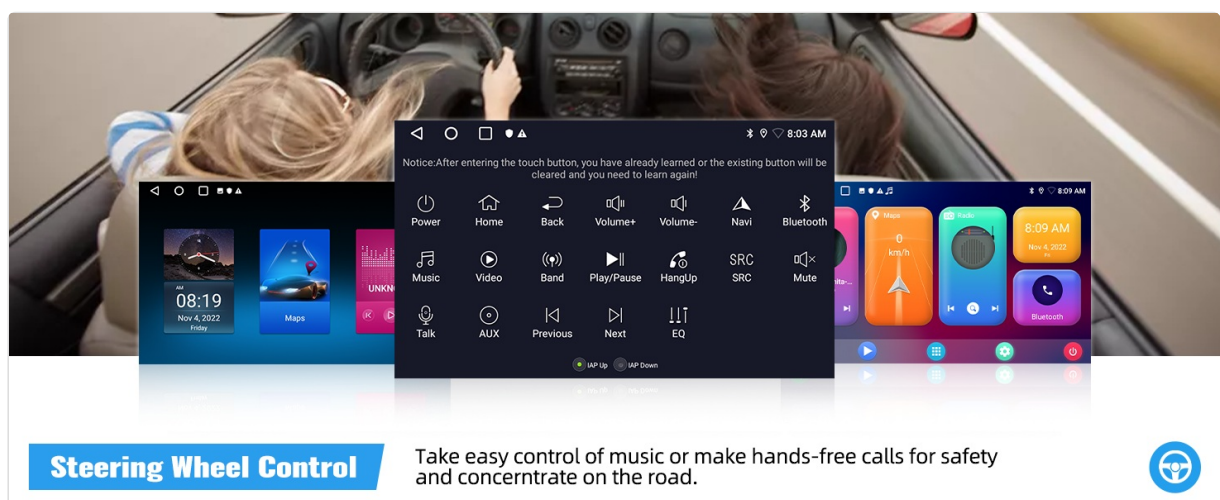


Figure 4: Steps for setting up steering wheel controls.

Operating Instructions

1. Wireless Apple CarPlay Connection

To connect your iPhone to Wireless CarPlay:

1. Enable Bluetooth on your iPhone and pair it with the car radio.
2. Open the "Zlink" application on the car stereo.
3. If the connection fails, connect your phone to the car stereo's hotspot, then click the "Zlink" app again. Ensure Bluetooth and hotspot connections are maintained.

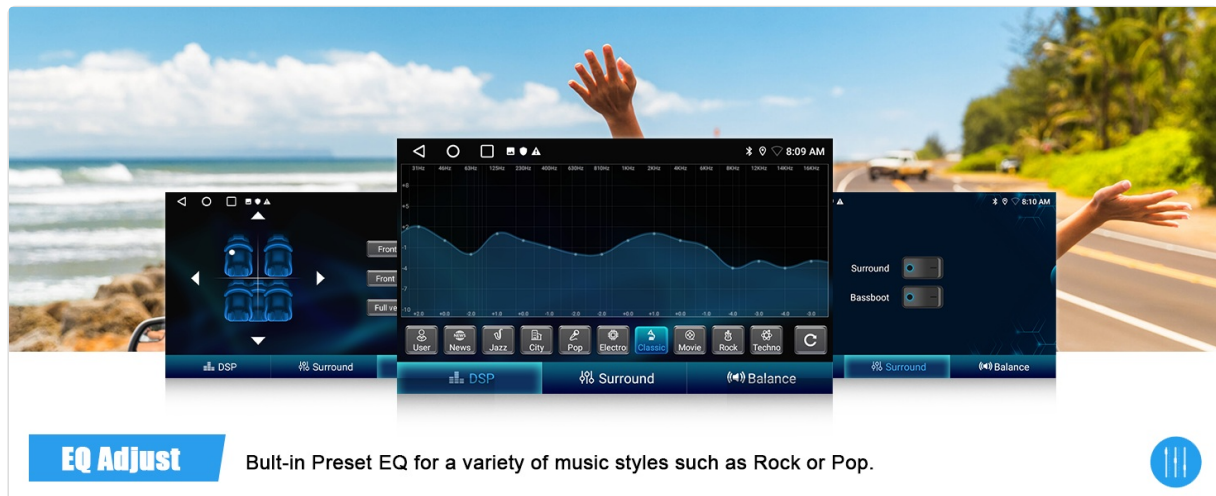


Figure 5: Wireless Apple CarPlay connection steps.

2. Wireless Android Auto Connection

To connect your Android phone to Wireless Android Auto:

1. Ensure you have the Android Auto app installed on your phone.
2. Enable Bluetooth on your Android phone and pair it with the car radio.
3. Open the "Zlink" application on the car stereo.

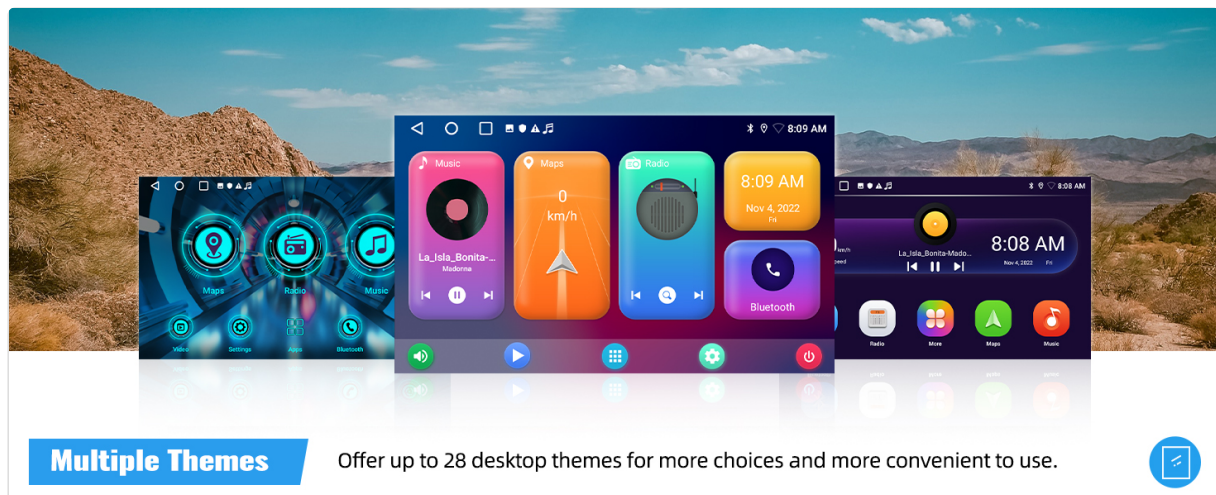


Figure 6: Wireless Android Auto connection steps.

3. GPS Navigation & WiFi

The unit supports both online and offline navigation. The pre-installed "Here Wego" app provides offline maps. Connect to WiFi via your phone's hotspot or a dedicated car WiFi device to access online maps and other internet-based applications.

GPS Navigation & WiFi Connection

Support both offline and online navigation, easy to connect to WiFi Hotspot and access the internet in the car.



Figure 7: GPS navigation display and WiFi connection icon.

4. Bluetooth Hands-Free & Music Streaming

Pair your phone via Bluetooth to make and receive calls hands-free, and stream audio directly to the car stereo. The unit also features an FM/RDS radio with preset stations for local broadcasts.



Figure 8: Bluetooth call screen and FM radio interface.

5. Equalizer Adjustment & UI Themes

Customize your audio experience with the built-in equalizer, offering preset EQ curves for various music styles (e.g., Rock, Pop, Classical). You can also personalize the interface by switching between multiple UI themes.



Figure 9: Equalizer settings and multiple UI themes.

6. Mirror Link Functionality

Use the Mirror Link feature to cast your smartphone's screen directly to the car stereo's display. This allows for convenient viewing of content from your phone on the larger screen.

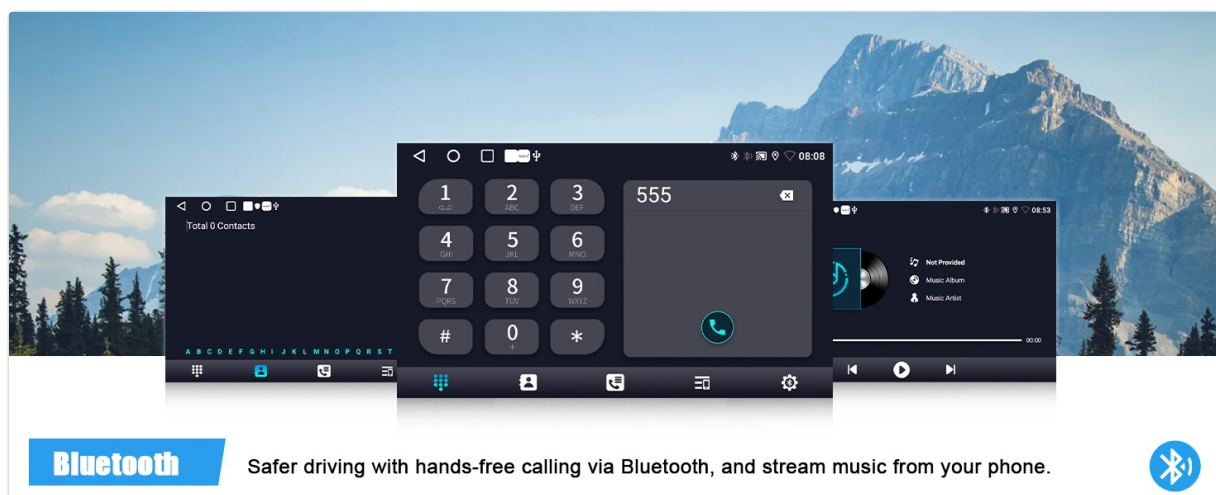


Figure 10: Mirror Link feature in action.

Official Product Videos

MT8163 Android Car Stereo & Wireless Apple Carplay

This video demonstrates the functionality and connection process for Wireless Apple CarPlay on the MT8163 Android Car Stereo. It shows how to pair your iPhone and access CarPlay features.

MT8163 Android Car Stereo & Wireless Android Auto

This video illustrates the setup and use of Wireless Android Auto with the MT8163 Android Car Stereo, guiding users through connecting their Android device.

MT8163 Android Car Stereo & Wireless Android Cast

This video demonstrates the Wireless Android Cast feature on the MT8163 Android Car Stereo, showing how to mirror an Android device's screen.

MT8163 Android Car Stereo & Wireless Apple Airplay

This video shows the Wireless Apple Airplay functionality of the MT8163 Android Car Stereo, allowing users to mirror content from their Apple devices.

Specifications

Item Weight	3.43 pounds
Product Dimensions	13.7 x 2 x 10.3 inches
Item Model Number	06e5b641-c5e6-4e17-8164-d7d4315e76a7
Display Size	9 Inches
Voice Command	Touchscreen
Brand	CAMECHO
Model Name	CAMECHO Android Head Unit
Vehicle Service Type	Car
Special Feature	GPS Navigation
Connectivity Technology	Bluetooth
Map Type	Street
Audio Output Mode	Stereo

Warranty Information

This CAMECHO Android 13 Car Stereo Radio comes with a **1-Year Warranty** from the date of purchase. Please retain your proof of purchase for warranty claims. The warranty covers manufacturing defects and malfunctions under normal use. It does not cover damage caused by improper installation, misuse, accidents, or unauthorized modifications.

Customer Support

For any questions, technical assistance, or support regarding your CAMECHO car stereo, please contact our customer service team:

Email: CAMECHOVIP@126.com

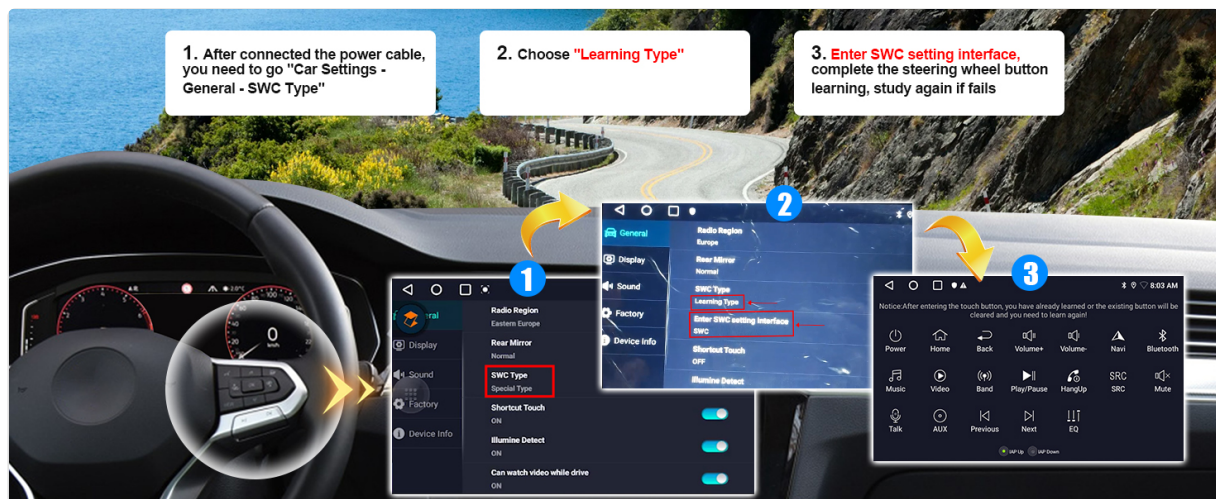


Figure 11: Customer support contact email.